

For Lease

1637 Kingsview Dr.

Lebanon, OH 45036

77,950 SF



Rod MacEachen

rod@sqftcommercial.com
(513) 675-5764

Amy Castaneda

amy@sqftcommercial.com
(503) 310-9768

Roddy MacEachen, SIOR

roddy@sqftcommercial.com
(513) 739-3985

Sarah Kern

sarah@sqftcommercial.com
(513) 426-4864

Jared Wagoner, SIOR

jared@sqftcommercial.com
(812) 890-1768

No warranty or representation, expressed or implied, is made as to the accuracy of the information contained herein, and same is submitted subject to error and omissions.

1637 Kingsview Dr.

Lebanon, OH 45036

77,950 SF



PROPERTY HIGHLIGHTS

Available SF	79,665
Warehouse/ Manufacturing Area	50,780
Office SqFt	28,885
Acreage	9.15 Acres
Clear Height	26'
Year Built	2006
Type Construction	Reinforced Concrete
HVAC	100% HVAC in plant/warehouse area
Column Spacing	50' x 40'
Dock Doors	One (1) 9'x10' with mechanical pit leveler and dock seal
Drive-in Doors	Two (2) - 12'x14 and 10'x10'
Electrical Service	3,000a/277-480v
Sprinkler	Yes
Parking Lot	120 free Surface Spaces are available; Ratio of 1.54/1,000 SF



[CLICK HERE FOR AERIAL VIDEO](#)



LOCATION:

- Immediate accessibility to I-71



No warranty or representation, expressed or implied, is made as to the accuracy of the information contained herein, and same is submitted subject to error and omissions.

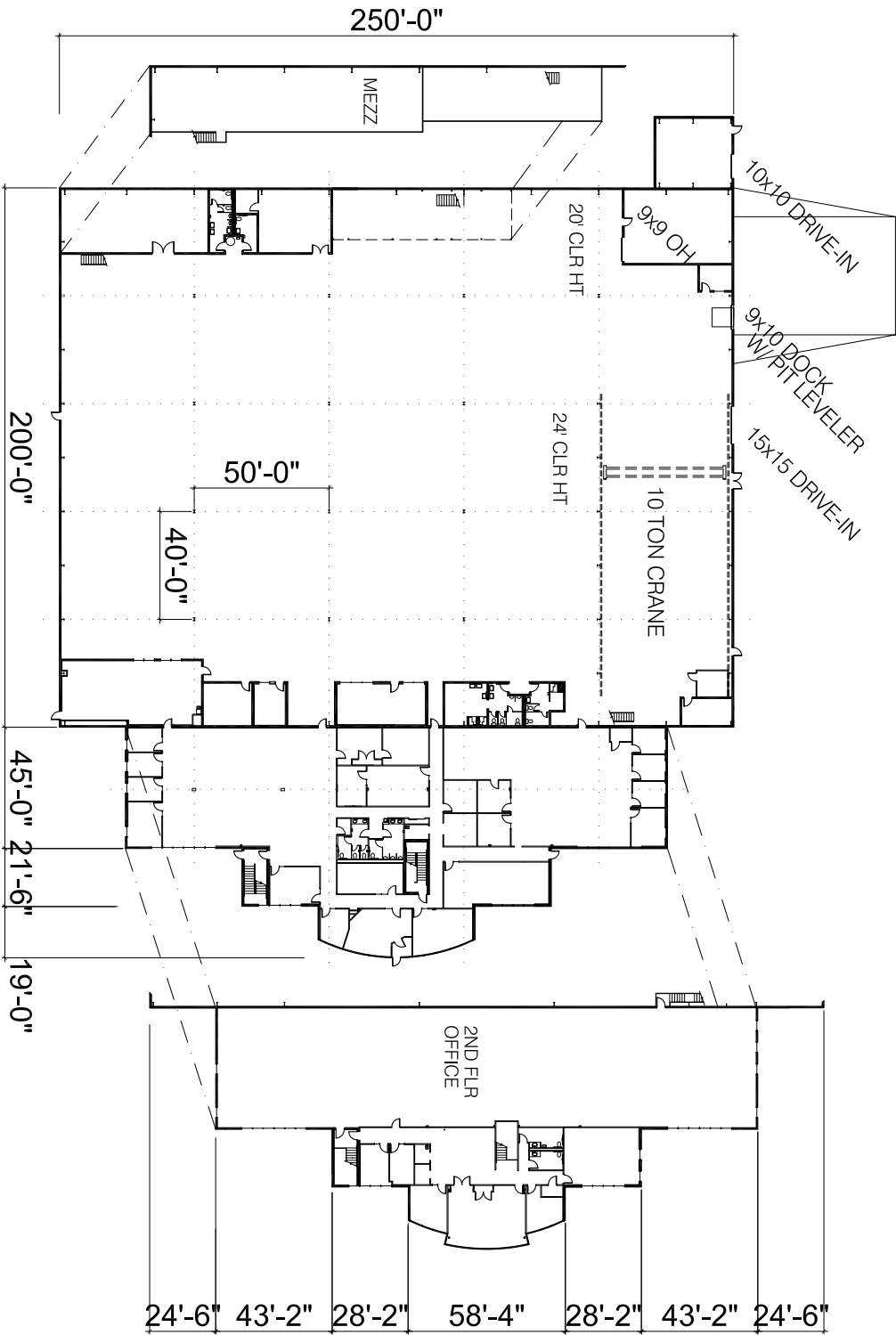
1637 Kingsview Dr.

Lebanon, OH 45036

77,950 SF



FLOOR PLAN



No warranty or representation, expressed or implied, is made as to the accuracy of the information contained herein, and same is submitted subject to error and omissions.

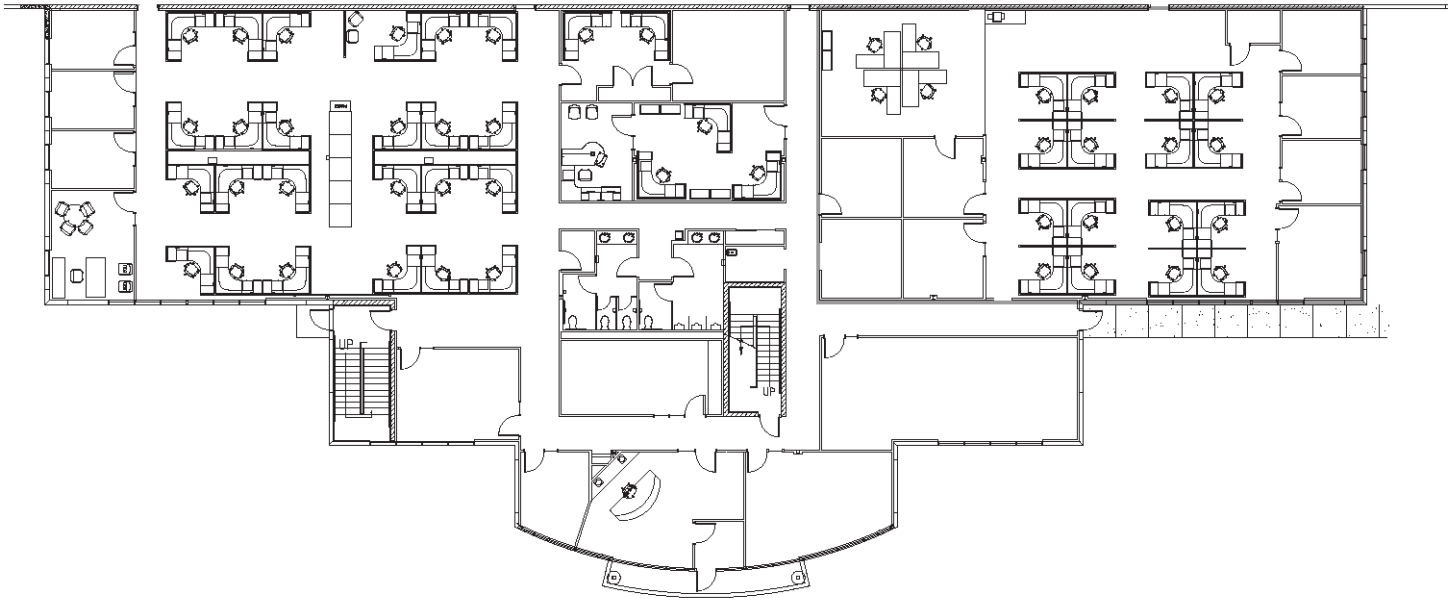
1637 Kingsview Dr.

Lebanon, OH 45036

77,950 SF



OFFICE FLOOR PLAN



PARCEL OUTLINE



No warranty or representation, expressed or implied, is made as to the accuracy of the information contained herein, and same is submitted subject to error and omissions.

1637 Kingsview Dr.

Lebanon, OH 45036

77,950 SF



No warranty or representation, expressed or implied, is made as to the accuracy of the information contained herein, and same is submitted subject to error and omissions.