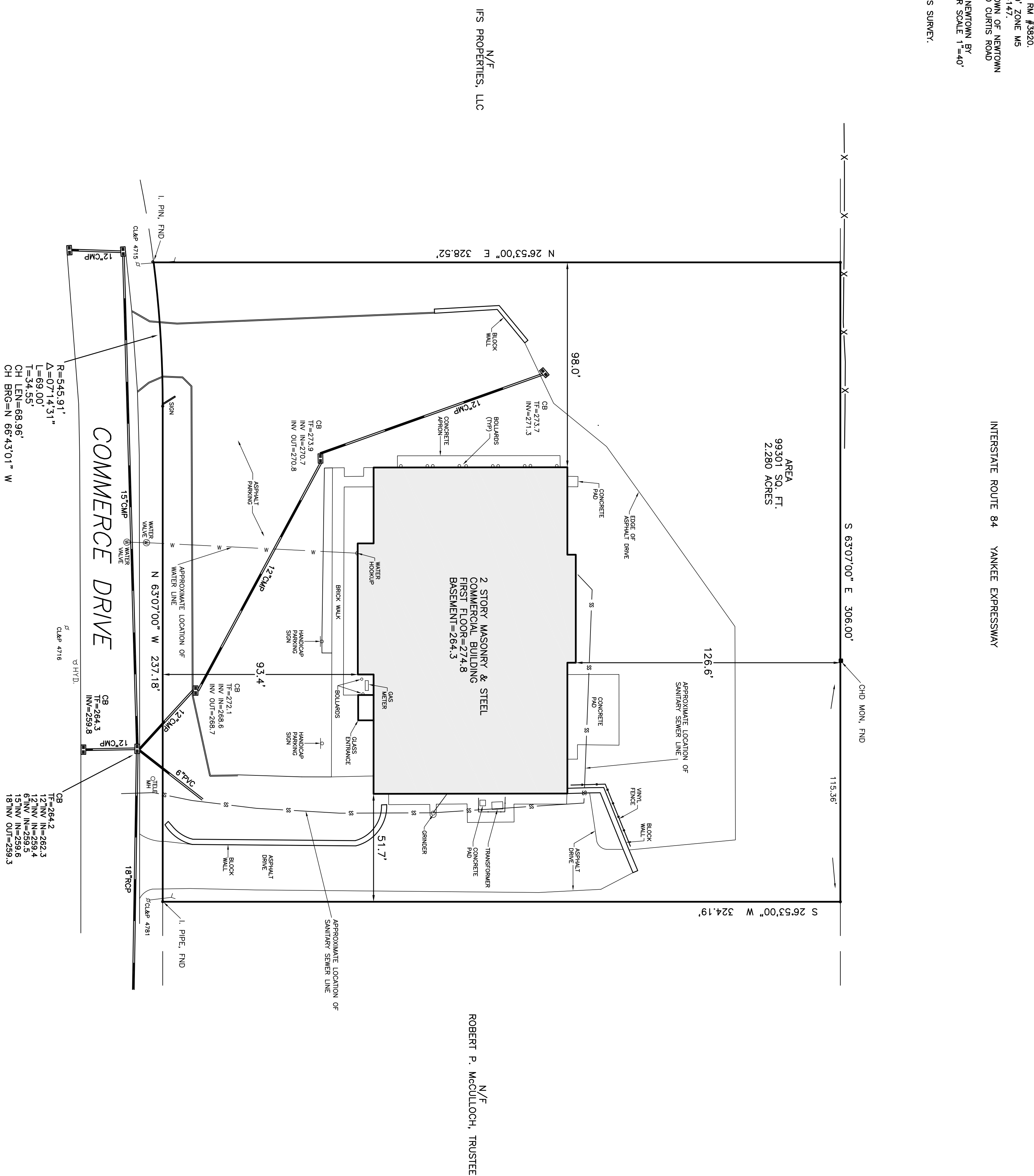


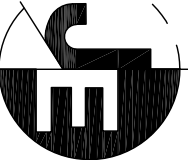
- NOTES:
1. THIS SURVEY (OR MAP) HAS BEEN PREPARED PURSUANT TO THE REGULATIONS OF CONNECTICUT STATE AGENCIES SECTIONS 20-206 AND 20-308-2(a), AND THE STANDARDS FOR SURVEYS AND MAPS IN THE STATE OF CONNECTICUT, ASADOPTED BY THE BOARD OF SURVEYING AND MAPPING, JANUARY 26, 1996. IT IS A PROPERTY SURVEY BASED ON A DEPENDENT RESURVEY CONFORMING TO HORIZONTAL ACCURACY CLASS 1-2.
2. REFERENCE MAPS ENTITLED:
  - A. NEWTON INDUSTRIAL PARK FINAL SUBDIVISION MAP PREPARED FOR WESTERN CONNECTICUT DEVELOPMENT CORP., NEWTON, CONNECTICUT SCALE 1"=100' MARCH 2, 1987, PREPARED BY ROBERT K. HENNING NM #39820.
  - B. 1962 LOT 10, GAGE CREEK TRACT, TOWNSHIP 2 NORTH, RANGE 1 EAST, ZONE MA, NEWTON TOWN MAP OCT. 1912 FOR LOTS 45&46 ACRES PREPARED BY LAND PLANNING ASSOCIATES, INC. #1414
  - C. CONNECTICUT DEPARTMENT OF TRANSPORTATION BUREAU OF HIGHWAYS RIGHT OF WAY MAP TOWN OF NEWTON YANKEE EXPRESSWAY FROM THE NEWTON-SANDY HOOK ROAD TO 1500 FEET EAST OF PHLO CURTIS ROAD SCALE 1"=80' NUMBER 96-20 SHEETS 1 & 2 OF 5 OBTAINED FROM CT DOT.
  - D. COMPLETION PLAN TOWN OF NEWTON WAS SHOWING EASEMENT GRANTED TO THE TOWN OF NEWINGTON BY THE STATE OF CONNECTICUT DEPARTMENT OF CONSERVATION AND RECREATION FOR THE PORTLOCK RIVER SCALE 1"=40' MAY 2005 PREPARED BY BROOKLAND LAND SURVEYORS, P.C. OBTAINED FROM CT DOL.
3. LOT CORNER MARKERS DEPICTED HEREON WERE FOUND AND/OR SET DURING COMPLETION OF THIS SURVEY.
4. BEARINGS BASED ON SUBDIVISION MAP.



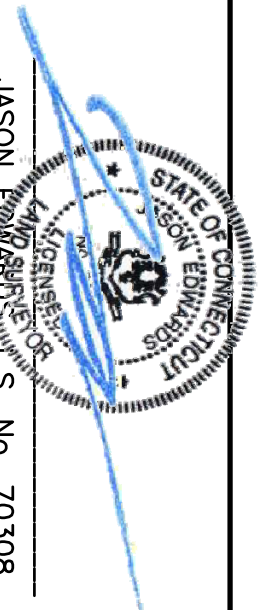
TO MY KNOWLEDGE AND BELIEF, THIS MAP IS SUBSTANTIALLY CORRECT AS NOTED HEREON.

THIS MAP IS NOT VALID UNLESS EMBOSSED WITH THE SEAL OR AFFIXED WITH THE LIVE STAMP OF THE SIGNATORY.

\_\_\_\_\_

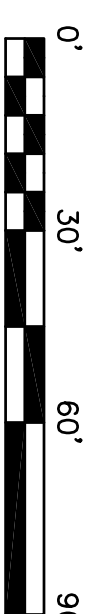


**EDWARDS & ASSOCIATES, LLC**  
Engineering and Surveying  
227 Stepney Road  
Easton, CT. 06612  
(203)-268-4205  
[www.jedwardsassoc.com](http://www.jedwardsassoc.com)



JASON EDWARDS, L.S. No. 70308

RECORD  
IMPROVEMENT LOCATION SURVEY  
23 COMMERCE DRIVE  
NEWTOWN, CONNECTICUT



SCALE 1"=30' JANUARY 9, 2018