

113-114

WHITEHEAD AVENUE
SOUTH RIVER | NEW JERSEY



- EXCLUSIVE -
INDUSTRIAL WAREHOUSE/LAND FOR LEASE

113-114

WHITEHEAD AVENUE

SOUTH RIVER | NEW JERSEY

113–114 Whitehead Avenue presents a versatile industrial lease opportunity in South River, NJ.

Encompassing approximately 16,700 SF of functional warehouse and flex space, the property sits on 4 acres of land suitable for truck parking, outdoor storage, or equipment staging. Ideal for logistics, light manufacturing, or contractor operations, the site's configuration allows for divisibility to accommodate a range of tenant sizes.

Conveniently positioned near Routes 18, 1, and the New Jersey Turnpike, the location offers excellent regional connectivity across Middlesex County and beyond. With its ample outdoor area and adaptable building layout, 113–114 Whitehead Avenue delivers both operational flexibility and strategic access in a central industrial setting.

PROPERTY OVERVIEW

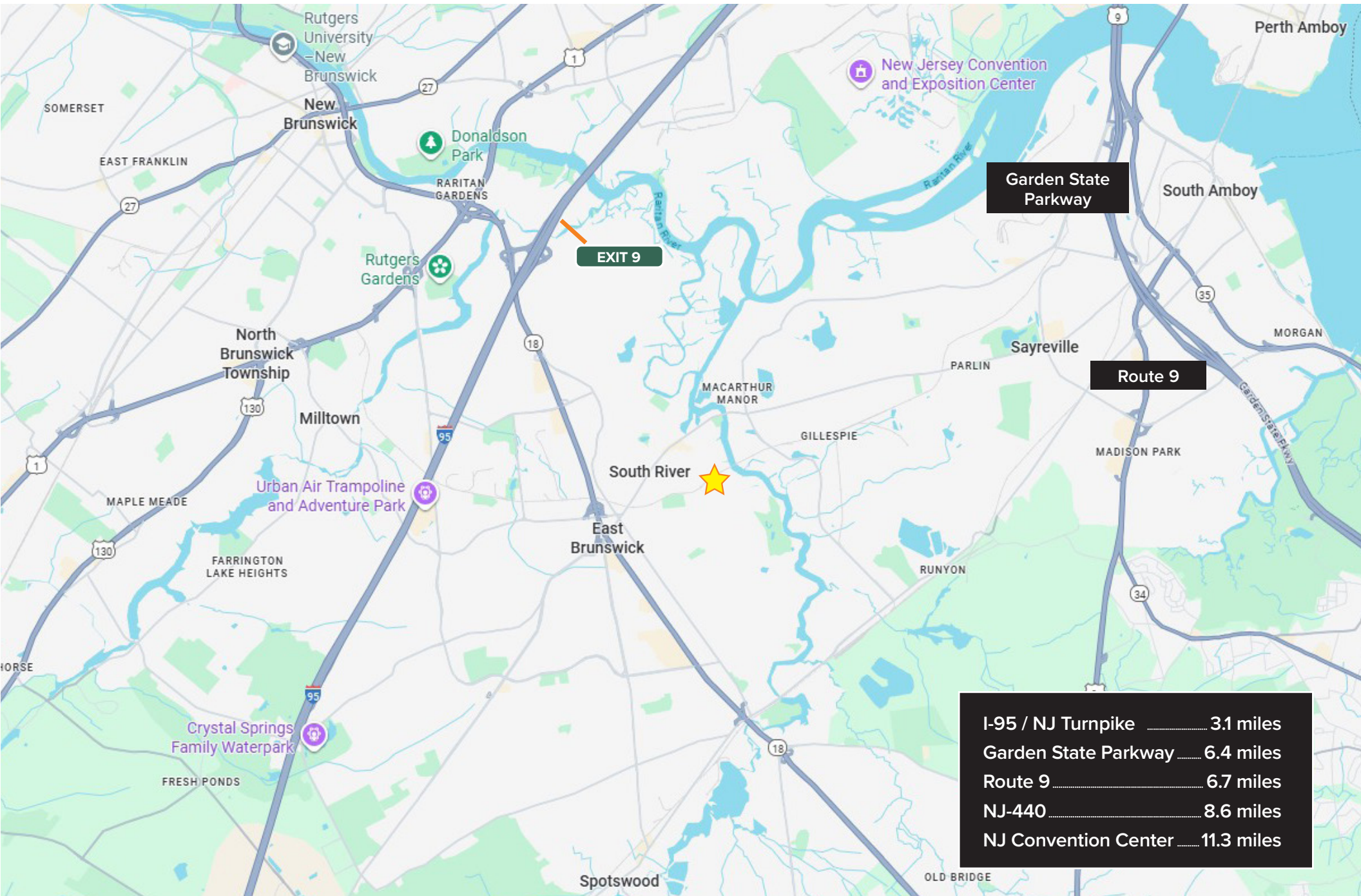
Property Type	Industrial Warehouse
Size	16,700 SF
Lot Size	4 Acres (divisible)
Frontage	300'
Ceiling Heights	20' clear
Possession	Immediate

ASKING RENT: UPON REQUEST



113-114 WHITEHEAD AVENUE | SOUTH RIVER, NJ

FOR LEASE



I-95 / NJ Turnpike	3.1 miles
Garden State Parkway	6.4 miles
Route 9	6.7 miles
NJ-440	8.6 miles
NJ Convention Center	11.3 miles

FOR MORE INFORMATION,
PLEASE CONTACT:

JACK ZALTA

M: 347.256.9281

E: JZalta@Ksrny.com

ALBERT MOSSERI

M: 917.647.9457

E: AMosseri@Ksrny.com



1385 Broadway, 22nd Floor
New York, NY 10018
212.417.9217
ksrny.com

All information supplied in this marketing presentation and/or flyer is from sources deemed reliable and is furnished subject to errors, omissions, modifications, removal of listings from sale/lease and to any listing condition. Any square footage, dimensions, floor plans and/or technical data set forth are approximations and are subject to further elaboration/confirmation.