



## PROPERTY DETAILS

- Retail redevelopment opportunity at high visibility location in SE Fort Lauderdale
- Rare 3/4 acre parcel fronting South Federal Highway-109 ft frontage
- Immediate area undergoing redevelopment with new hotels, restaurants and other retail uses
- Close proximity to FLL Airport, Port Everglades, Downtown Fort Lauderdale and the new Broward County Convention Center
- New 9,901 SF retail building was previously approved by City

## ABOUT PROPERTY



### PRICE

\$4,700,000



### YEAR BUILT

9,901 SF retail building(TBD)



### AVAILABLE SF

32,577 SF or 3/4 acre land area



### PARKING

49 spaces



### LOCATION

SE Fort Lauderdale

For more information:

**Steve Hyatt**

954.494.3091 | [Shyatt@Bergercommercial.Com](mailto:Shyatt@Bergercommercial.Com)  
[bergercommercial.com](http://bergercommercial.com)



COMMERCIAL BROKERAGE AND PROPERTY MANAGEMENT



### PROPERTY DESCRIPTION

The Offering consists of a 3 parcel property fronting on South Federal Highway. Currently being used for retail sales, the property's highest and best use is as a new retail development of approximately 9,901 SF with 49 parking spaces on the two rear parcels. The current leases are all short term allowing for in place cash flow while development plans are underway.

### PROPERTY HIGHLIGHTS

- Retail redevelopment opportunity at high visibility location in SE Fort Lauderdale
- Rare 3/4 acre parcel fronting South Federal Highway
- Immediate area undergoing redevelopment with new hotels, restaurants and other retail uses
- Close proximity to FLL Airport, Port Everglades, Downtown Fort Lauderdale and the new Broward County Convention Center
- Land price is \$144.27 PSF
- Zoned B-1 (front) and X-P (rear)

### OFFERING SUMMARY

Sale Price:	\$4,700,000
Lot Size:	32,577 SF
Building Size:	9,901 SF

For more information:

**Steve Hyatt**

954.494.3091 | [Shyatt@Bergercommercial.Com](mailto:Shyatt@Bergercommercial.Com)  
[bergercommercial.com](http://bergercommercial.com)



COMMERCIAL BROKERAGE AND PROPERTY MANAGEMENT



For more information:

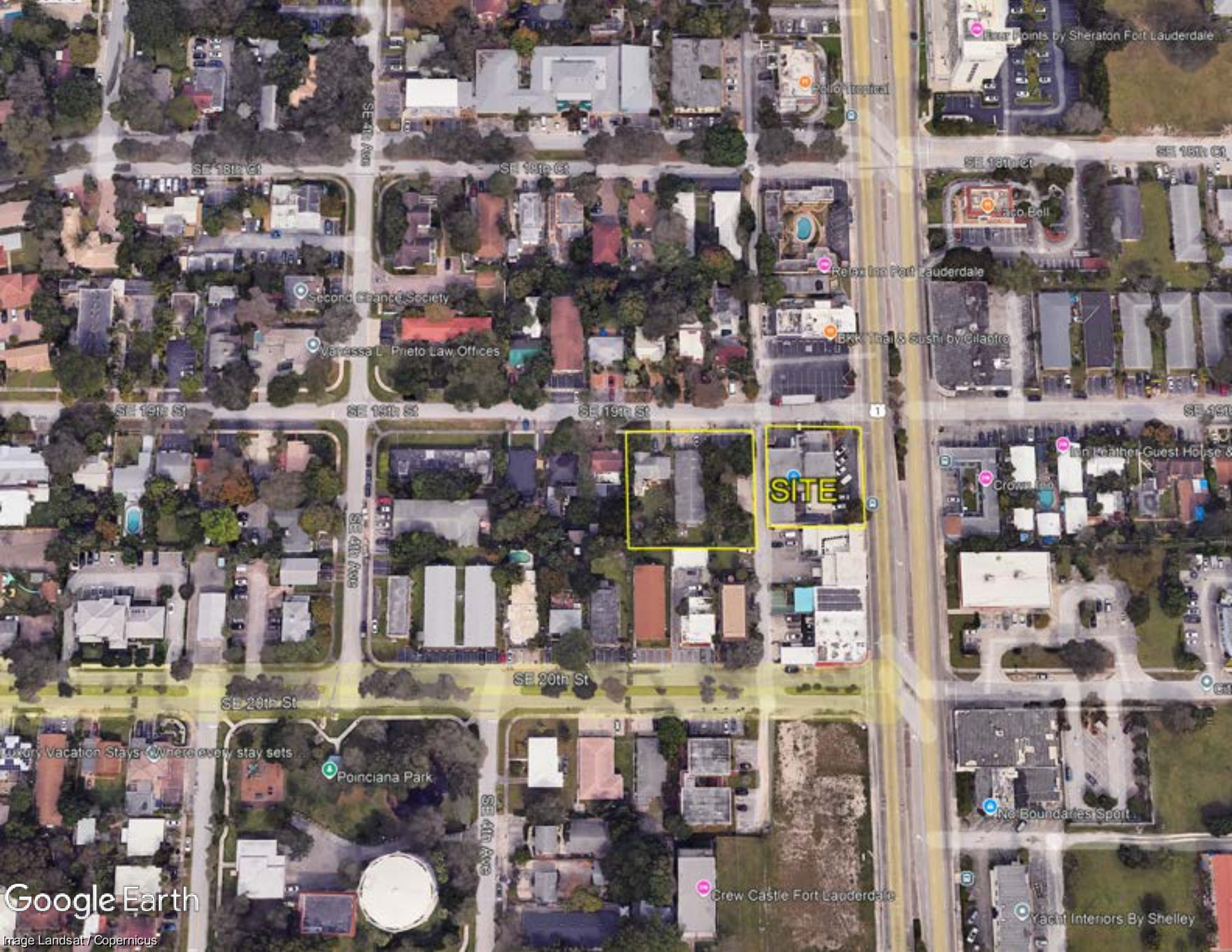
**Steve Hyatt**

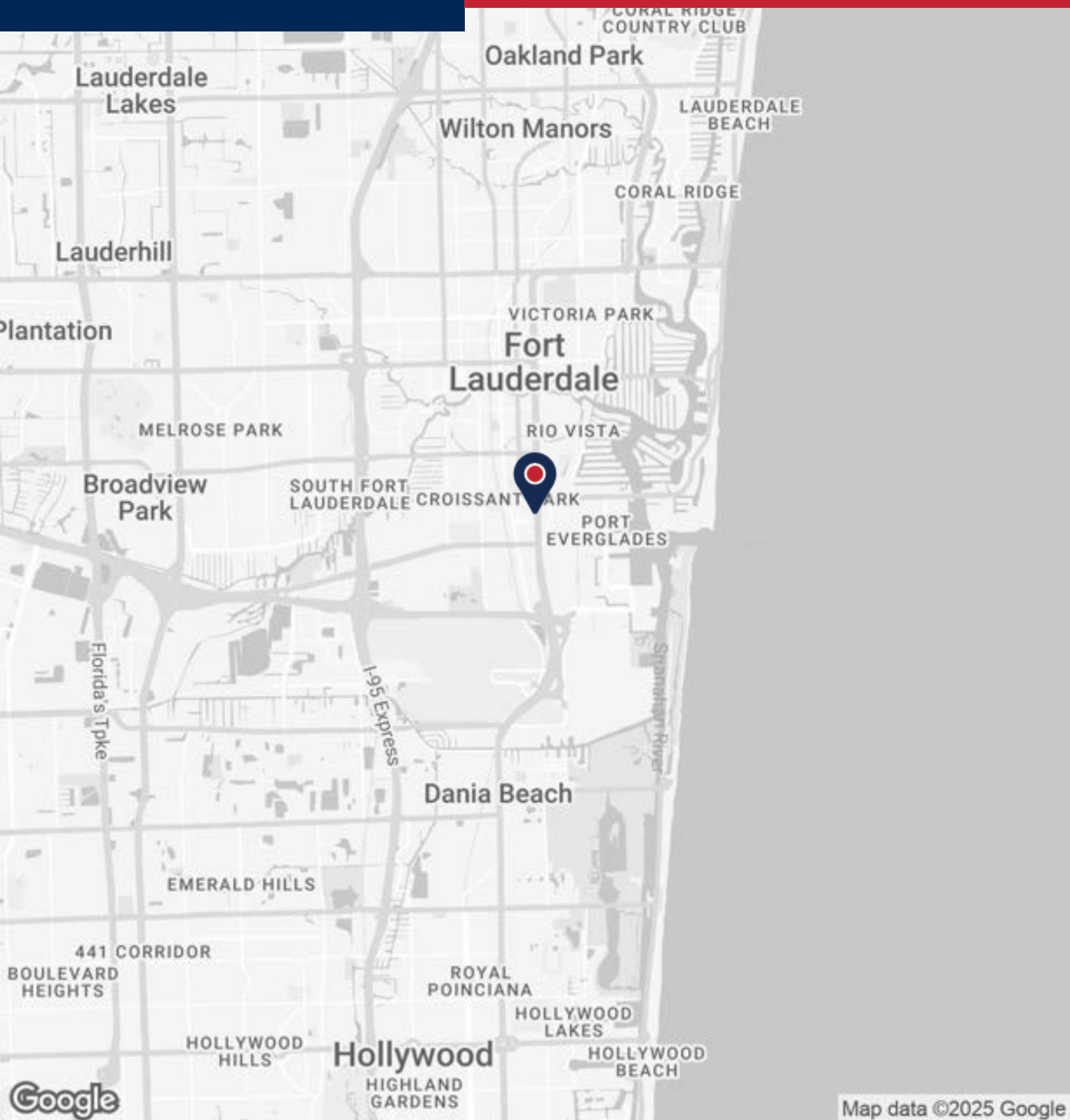
954.494.3091 | [Shyatt@Bergercommercial.Com](mailto:Shyatt@Bergercommercial.Com)  
[bergercommercial.com](http://bergercommercial.com)



**CYRFAC**  
International

COMMERCIAL BROKERAGE AND PROPERTY MANAGEMENT





For more information:

**Steve Hyatt**

954.494.3091 | [Shyatt@Bergercommercial.Com](mailto:Shyatt@Bergercommercial.Com)  
[bergercommercial.com](http://bergercommercial.com)



COMMERCIAL BROKERAGE AND PROPERTY MANAGEMENT



Existing 7,915 SF Retail Building



Side view of existing 7,915 SF Retail Building

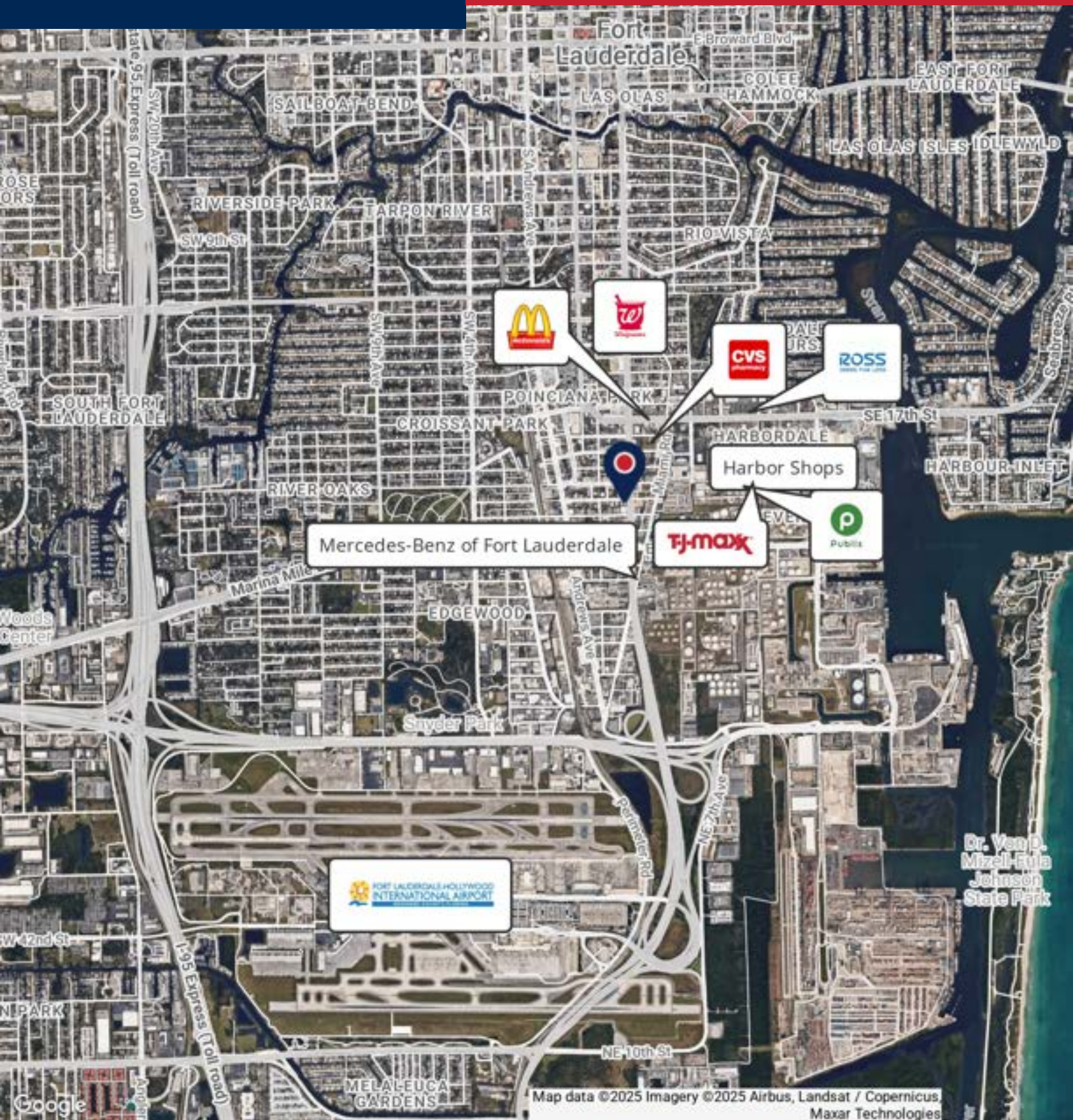
For more information:

**Steve Hyatt**

954.494.3091 | [Shyatt@Bergercommercial.Com](mailto:Shyatt@Bergercommercial.Com)  
[bergercommercial.com](http://bergercommercial.com)



COMMERCIAL BROKERAGE AND PROPERTY MANAGEMENT

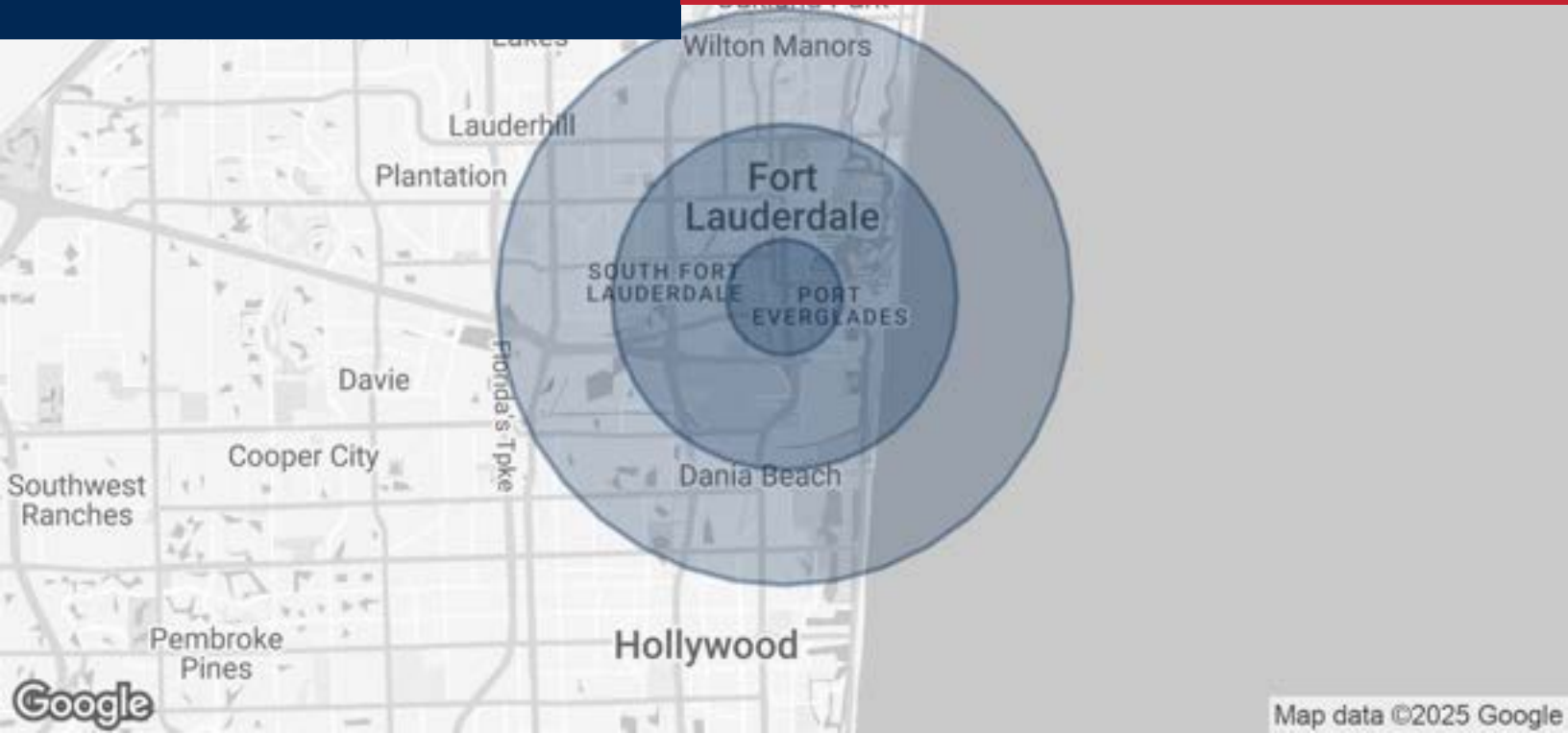


For more information:

**Steve Hyatt**

954.494.3091 | [Shyatt@Bergercommercial.Com](mailto:Shyatt@Bergercommercial.Com)  
[bergercommercial.com](http://bergercommercial.com)





POPULATION	1 MILE	3 MILES	5 MILES
Total Population	9,580	93,609	268,349
Average Age	43	43	43
Average Age (Male)	43	43	43
Average Age (Female)	43	43	43

HOUSEHOLDS & INCOME	1 MILE	3 MILES	5 MILES
Total Households	4,846	45,959	116,954
# of Persons per HH	2	2	2.3
Average HH Income	\$113,633	\$117,144	\$102,461
Average House Value	\$725,176	\$657,813	\$531,927

Demographics data derived from AlphaMap

For more information:

**Steve Hyatt**  
954.494.3091 | Shyatt@Bergercommercial.Com  
bergercommercial.com



**STEVE HYATT**

Senior Vice President

shyatt@bergercommercial.com

Direct: **954.494.3091**

FL #BK411032

**PROFESSIONAL BACKGROUND**

Steve Hyatt joined Berger Commercial Realty Corp. in 2009 as Senior Vice President. He is primarily responsible for investment sales, land brokerage, and acquisition/disposition services for both corporate clients and private investors. Steve has extensive transaction experience in landlord and tenant representation, as well as build-to-suit and speculative project development. These combined skills allow him to play a key role in the successful valuation, positioning and marketing of multiple assets on behalf of national and local clients.

A native of South Florida, Steve has strong market knowledge and executive level contacts in the real estate, banking and automotive industries. Prior to joining Berger Commercial Realty, he was Vice President of Corporate Development at AutoNation, Inc., a Fortune 500 automotive retailer based in Fort Lauderdale. At AutoNation, Steve was responsible for the acquisition and disposition of more than 175 automobile dealerships in 17 states with an aggregate purchase price in excess of \$3 billion. Steve has held senior executive positions in brokerage, development and asset management for well-known commercial real estate companies such as Stiles Corporation and The Galbreath Company (now Jones Lang LaSalle). He began his career with Coldwell Banker Commercial Group (now CBRE) in 1985.

**EDUCATION**

Mr. Hyatt earned his Bachelor's degree from Wake Forest University in Winston-Salem, North Carolina. He has completed additional coursework in real estate appraisal through the Appraisal Institute and is currently a Certified Commercial Investment Member (CCIM) candidate, having completed the financial, market and decision analysis portions of the designation.

**MEMBERSHIPS**

- State of Florida - Licensed Real Estate Broker since 1985
- NAIOP- Member and Past Board Director, South Florida Chapter
- CoStar Power Broker Multi-Year Winner
- Certified Commercial Investment Member (CCIM)- Candidate
- Leadership Broward Class XIII
- Jack and Jill Children's Center- Executive Board Member
- Community Foundation of Broward- past Board Member and Treasurer
- Wake Forest Club of South Florida- Past President
- Wake Forest Alumni Council

**Berger Commercial Realty**

550 S. Andrews Avenue Suite 400  
Ft. Lauderdale, FL 33301  
954.358.0900

For more information:

**Steve Hyatt**

954.494.3091 | Shyatt@Bergercommercial.Com  
bergercommercial.com



COMMERCIAL BROKERAGE AND PROPERTY MANAGEMENT