



IRVINE MINI

9829 RESEARCH DRIVE

IRVINE, CA 92618





PROPERTY OVERVIEW

BASIC PROPERTY FEATURES

BUILDING SIZE:
21,478 SF

LOT SIZE:
2.0 ACRES

PARKING:
5.43:1,000

FREEWAY VEHICLES PER DAY:
685,000

SERVICE BAYS:
14

YEAR BUILT:
2015

APN:
588-182-54

PARTS DEPARTMENT
1,394 SF

SERVICE:
8,266 SF

SHOWROOM/OFFICE:
7,575 SF

ZONING:
4.2 (D)



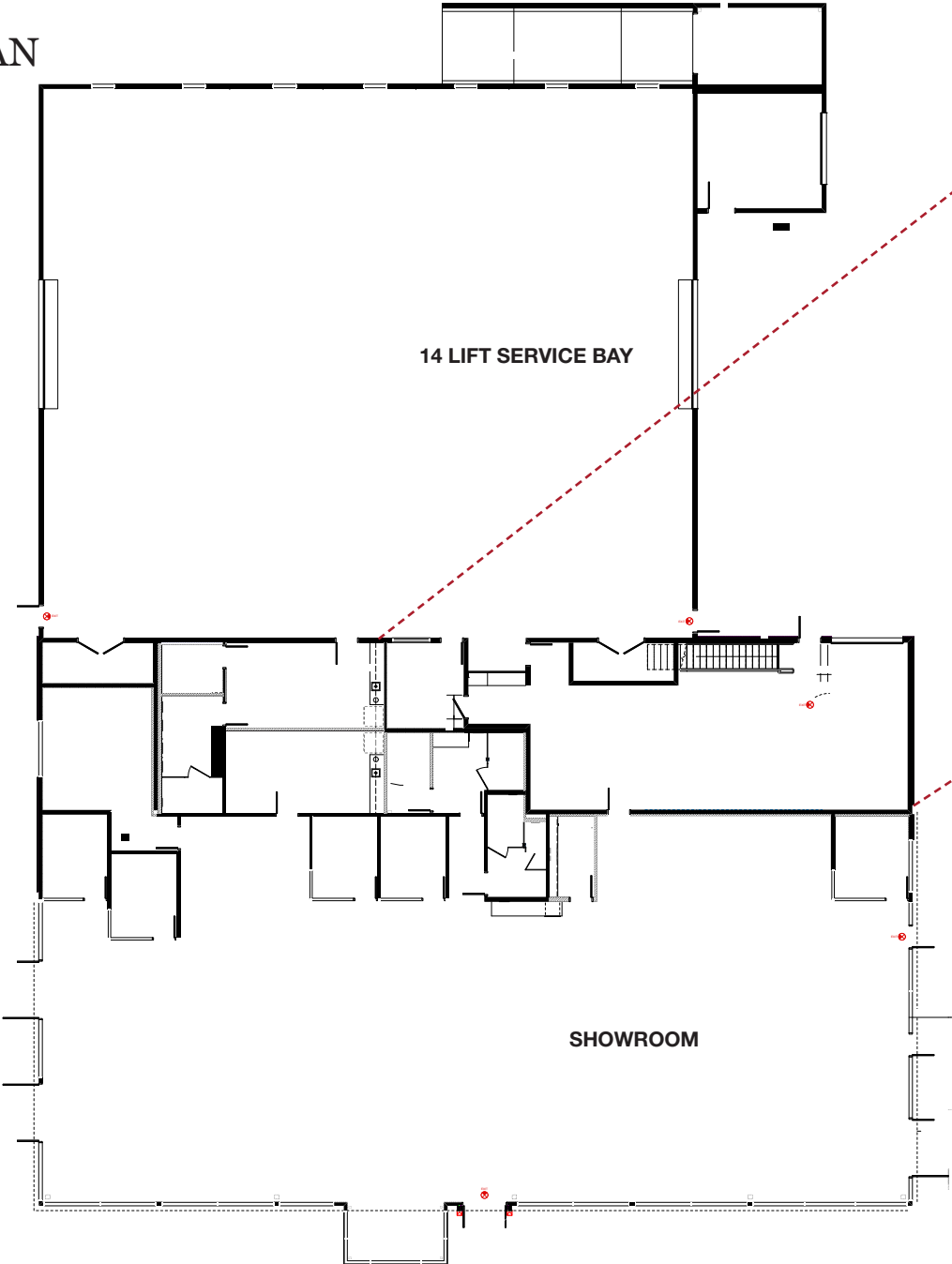




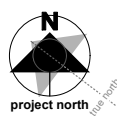
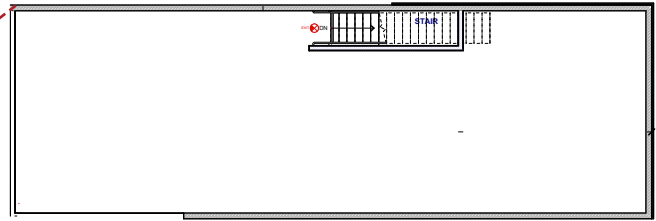
PROPERTY OVERVIEW

FLOOR PLAN

1ST FLOOR



2ND FLOOR



SITE PLAN



LOCATION OVERVIEW



IRVINE AUTO CENTER

9829 RESEARCH DRIVE

IRVINE, CA 92618



LOCATION OVERVIEW



IRVINE AUTO CENTER



LOCATION OVERVIEW



9829 RESEARCH DRIVE

IRVINE, CA 92618



FOR MORE INFORMATION, PLEASE CONTACT:

DON YAHN

+1 949 930 9251

don.yahn@cushwake.com

Lic #00990928

BRETT SWARTZBAUGH

+1 949 930 9217

brett.swartzbaugh@cushwake.com

Lic #01742530

Cushman & Wakefield | 18111 Von Karman Ave, Suite 1000, Irvine, CA 92612

[View Site Specific COVID-19 Prevention Plan](#)

©2020 Cushman & Wakefield. All rights reserved. The information contained in this communication is strictly confidential. This information has been obtained from sources believed to be reliable but has not been verified. NO WARRANTY OR REPRESENTATION, EXPRESS OR IMPLIED, IS MADE AS TO THE CONDITION OF THE PROPERTY (OR PROPERTIES) REFERENCED HEREIN OR AS TO THE ACCURACY OR COMPLETENESS OF THE INFORMATION CONTAINED HEREIN, AND SAME IS SUBMITTED SUBJECT TO ERRORS, OMISSIONS, CHANGE OF PRICE, RENTAL OR OTHER CONDITIONS, WITHDRAWAL WITHOUT NOTICE, AND TO ANY SPECIAL LISTING CONDITIONS IMPOSED BY THE PROPERTY OWNER(S). ANY PROJECTIONS, OPINIONS OR ESTIMATES ARE SUBJECT TO UNCERTAINTY AND DO NOT SIGNIFY CURRENT OR FUTURE PROPERTY PERFORMANCE.

