

PLAZA DISTRICT

536

MADISON AVENUE

BETWEEN EAST 54TH & 55TH STREETS
NEW YORK, NY 10022





RETAIL **536**
MADISON AVENUE

GROUND FLOOR
1,700 SF

MEZZANINE
1,400 FT

BASEMENT
STORAGE

FRONTAGE
20 FT

POSSESSION
ARRANGED



COMMENTS

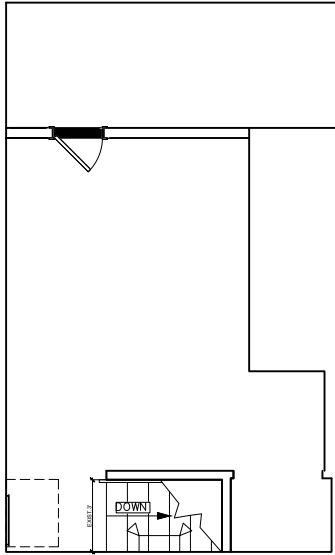
- Located in the heart of the Plaza District
- Space is in mint condition
- Mezzanine is currently used as a showroom and office
- Currently G/Fore
- All uses considered



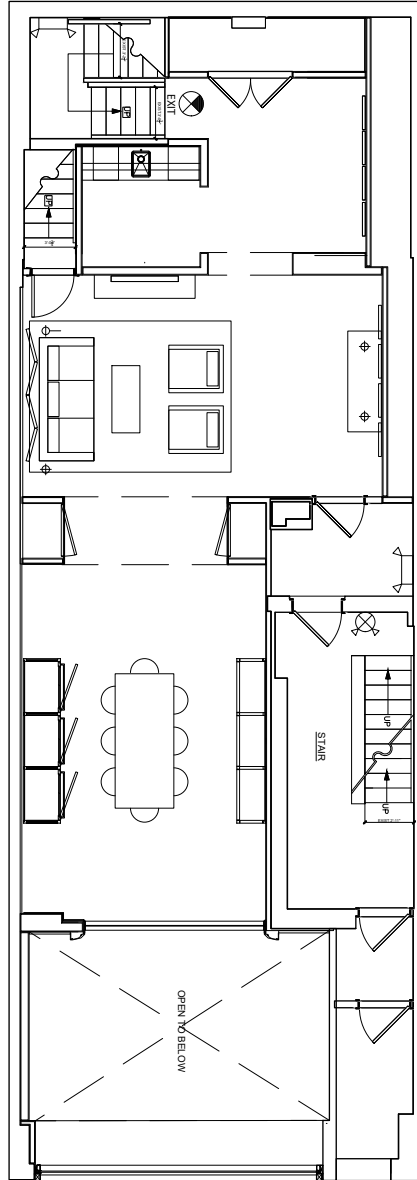
NEIGHBORS

- Rhone, Rolex, Sephora, Zadig & Voltaire, Davidoff of Geneva, Wolf & Shepherd, Bonobos, Untuckit, Allen Edmonds, Breitling

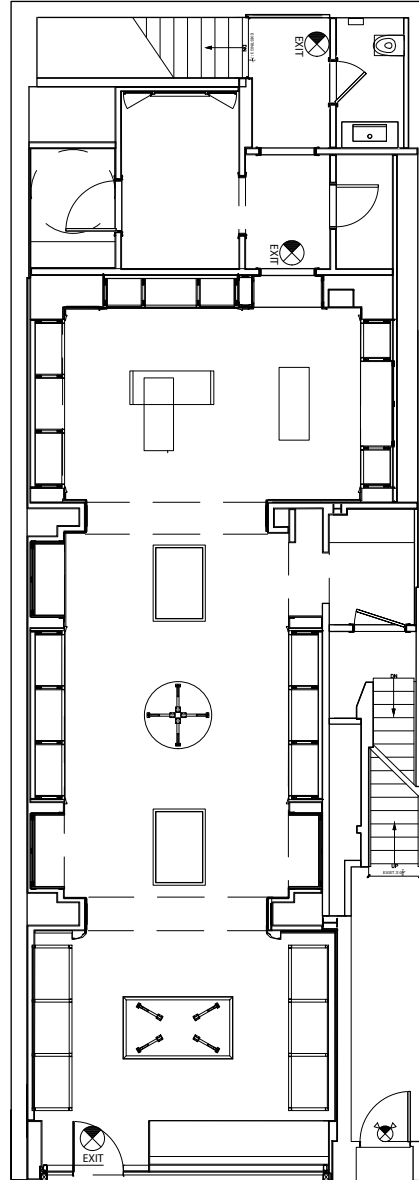
MEZZANINE



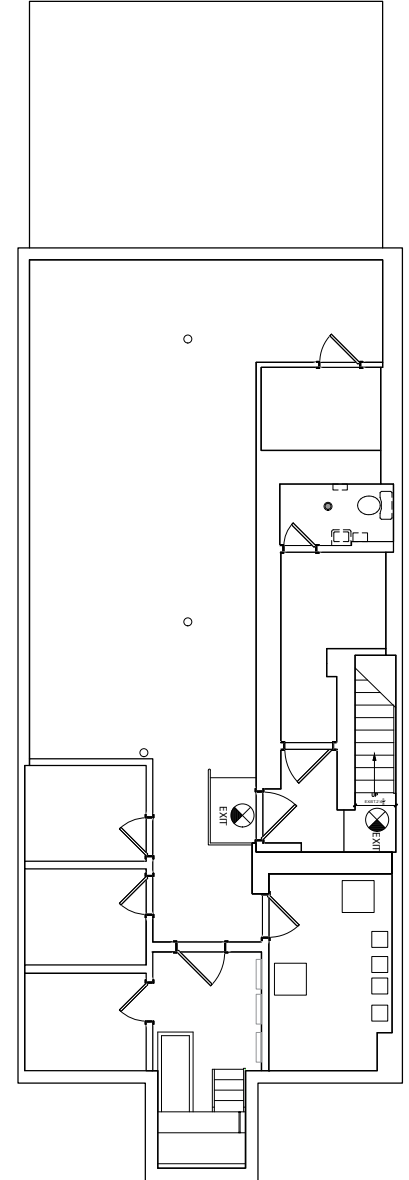
2ND FLOOR



GROUND FLOOR



BASEMENT



MADISON AVENUE

MEZZANINE



MEZZANINE

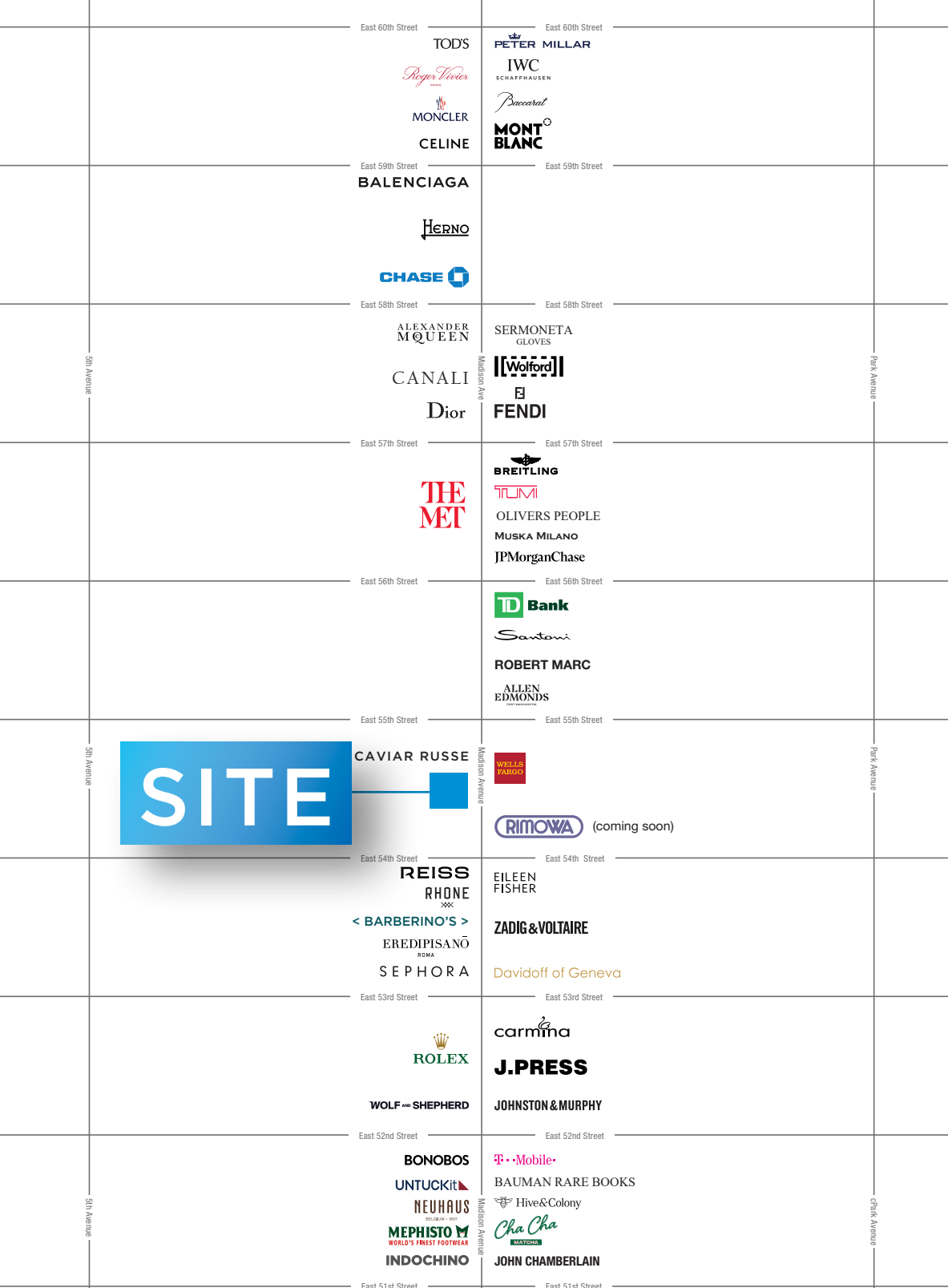


GROUND FLOOR



GROUND FLOOR





RETAIL 536 MADISON AVENUE

For more info, please contact our exclusive agents:

Evans Cyprus
 516-254-4673
ecyprus@winick.com

Kenneth Hochhauser
 212-792-2605
khochhauser@winick.com

Steven E. Baker
 212-792-2636
stevenb@winick.com



Winick Realty Group LLC, Licensed Real Estate Brokers
 655 Third Avenue, 24th Floor | New York, NY 10017
 T 212.792.2600 | F 212.792.2660 | winick.com

ALTHOUGH ALL INFORMATION REGARDING PROPERTY FOR SALE, RENTAL OR FINANCING IS FROM SOURCES DEEMED RELIABLE SUCH INFORMATION HAS NOT BEEN VERIFIED, AND NO EXPRESS REPRESENTATION IS MADE NOR IS ANY TO BE IMPLIED AS TO THE ACCURACY THEREOF, AND IT IS SUBMITTED SUBJECT TO ERRORS, OMISSIONS, CHANGE OF PRICE, RENTAL OR OTHER CONDITIONS, PRIOR SALE, LEASE OR FINANCING, OR WITHDRAWAL WITHOUT NOTICE