

# FOR LEASE

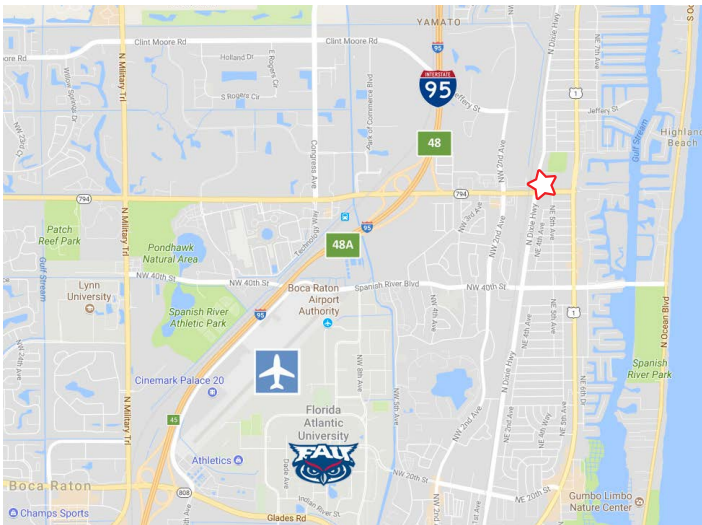
301 East Yamato Road  
Boca Raton, Florida 33431



Class A Office Space Available



[301Yamato.com](http://301Yamato.com)



- Class A building
- Newly renovated atrium & lobby
- On-Site security guard
- On-site banking, restaurant and cafe
- On-site property management and leasing
- Negotiable tenant improvements
- Large efficient floor plates
- Free covered garage parking
- Landmark location at Yamato and Dixie Highway
- Less than one mile east of I-95 and just west of amenity-rich, US Highway 1



MORNING CALM  
ADVISORS

FOR MORE INFORMATION

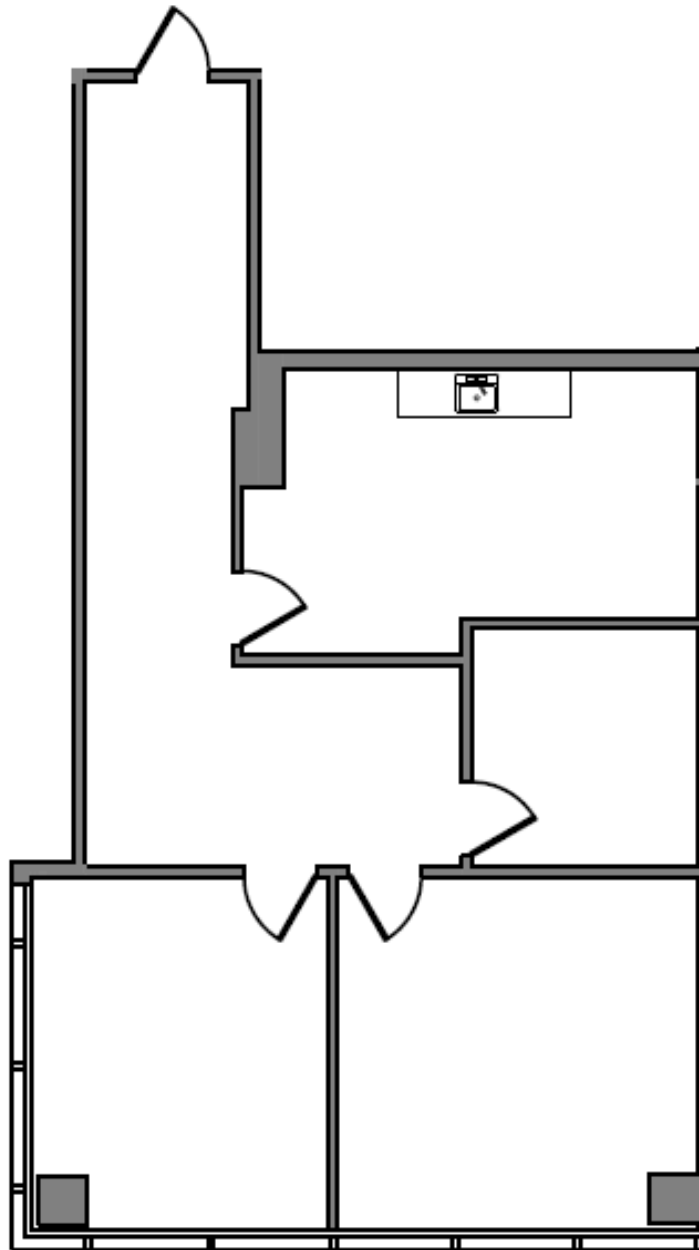
BEN ELEAZER | 561.758.4130 | [BELEAZER@MORNING-CALM.COM](mailto:BELEAZER@MORNING-CALM.COM)

JUSTIN CHESTER | 561.690.3908 | [JCHESTER@MORNING-CALM.COM](mailto:JCHESTER@MORNING-CALM.COM)

[morning-calm.com](http://morning-calm.com) | 561.383.2400 | 301 Yamato Road, Suite 4160, Boca Raton, FL 33431

# FNBCC PLAZA @ 301 YAMATO

SUITE 1120 | 1,238 SQ.FT.



MORNING CALM  
ADVISORS

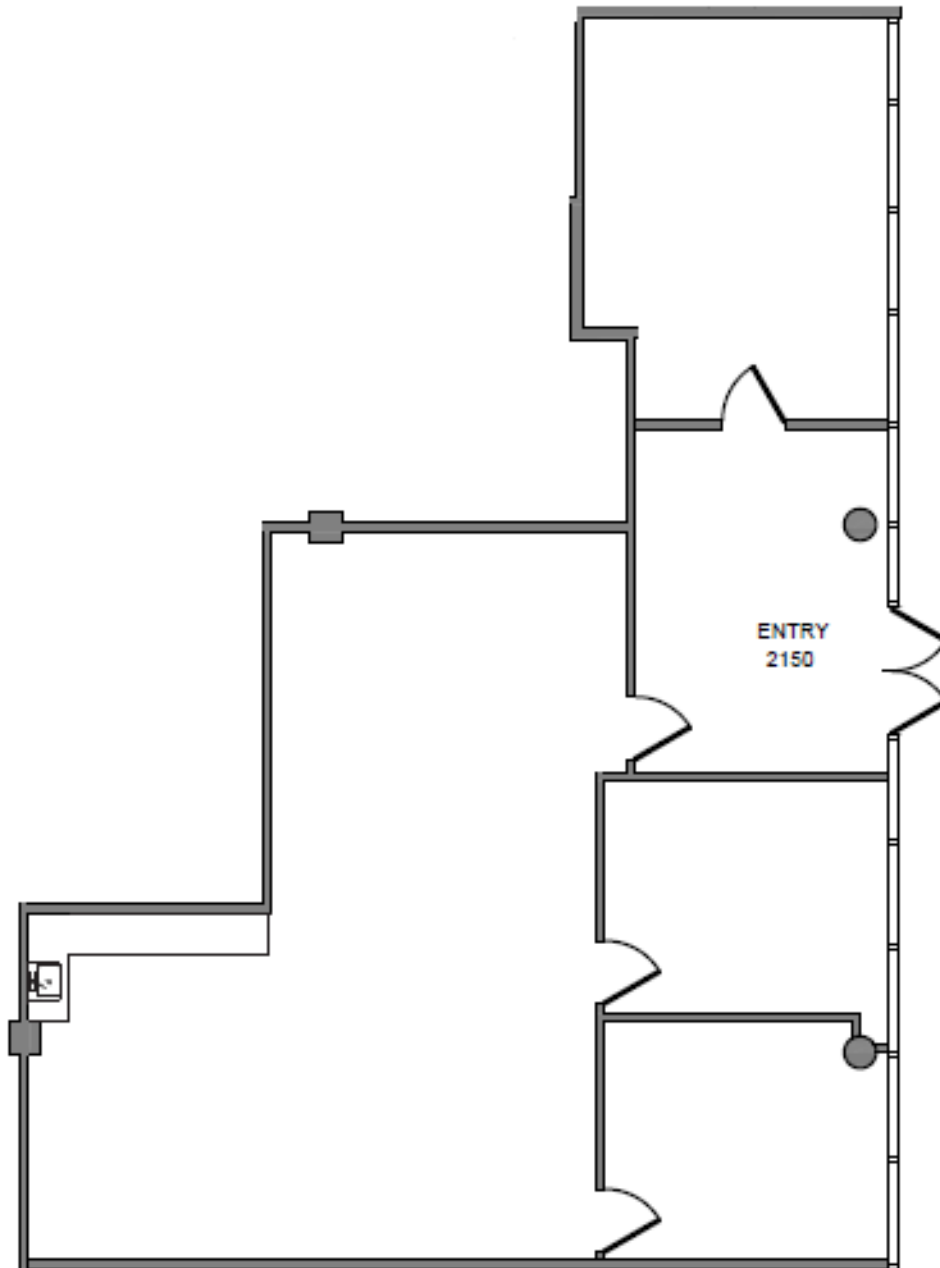
FOR MORE INFORMATION

BEN ELEAZER | 561.758.4130 | BELEAZER@MORNING-CALM.COM

JUSTIN CHESTER | 561.690.3908 | JCHESTER@MORNING-CALM.COM

# FNBCC PLAZA @ 301 YAMATO

SUITE 2150 | 1,898 SQ.FT.



MORNING CALM  
ADVISORS

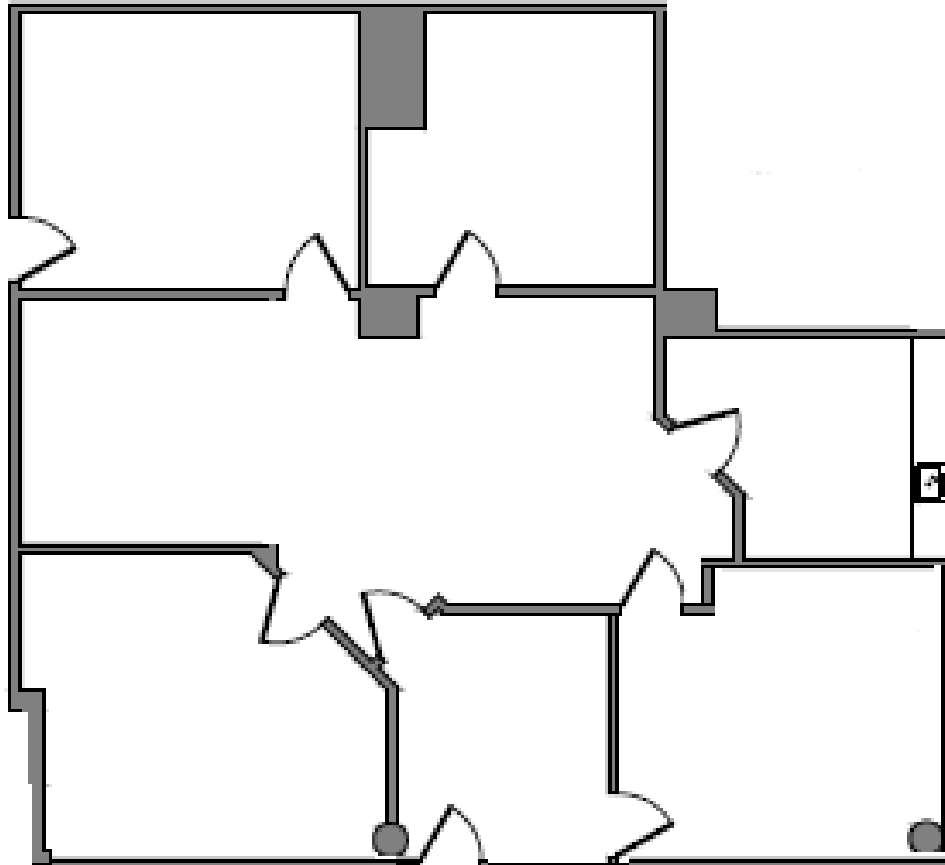
FOR MORE INFORMATION

BEN ELEAZER | 561.758.4130 | BELEAZER@MORNING-CALM.COM

JUSTIN CHESTER | 561.690.3908 | JCHESTER@MORNING-CALM.COM

# FNBCC PLAZA @ 301 YAMATO

SUITE 2110 | 1,931 SQ.FT.



MORNING CALM  
ADVISORS

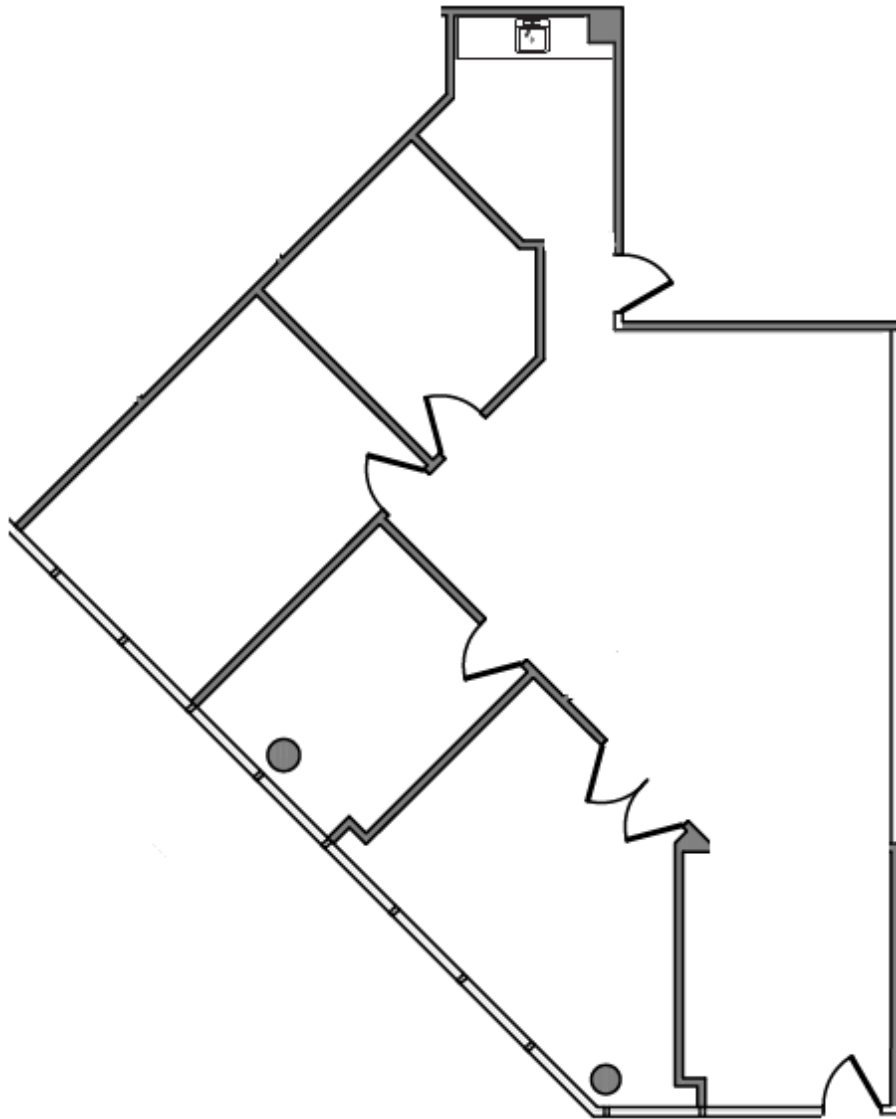
## FOR MORE INFORMATION

BEN ELEAZER | 561.758.4130 | BELEAZER@MORNING-CALM.COM

JUSTIN CHESTER | 561.690.3908 | JCHESTER@MORNING-CALM.COM

# FNBCC PLAZA @ 301 YAMATO

SUITE 2155 | 1,976 SQ.FT.



MORNING CALM  
ADVISORS

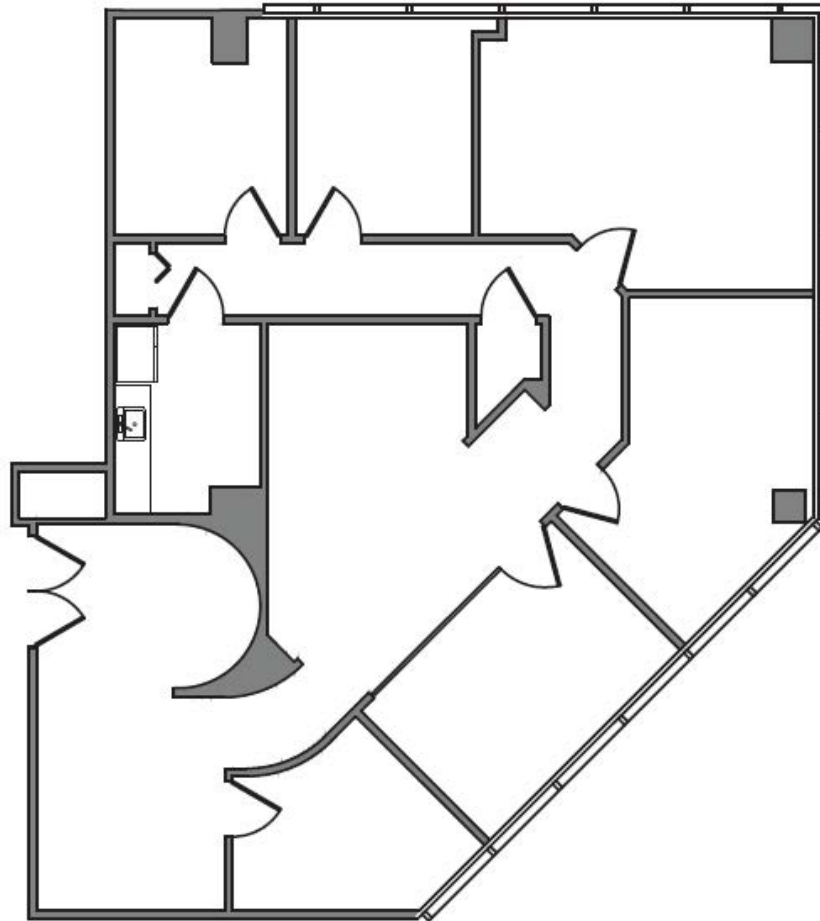
## FOR MORE INFORMATION

BEN ELEAZER | 561.758.4130 | BELEAZER@MORNING-CALM.COM

JUSTIN CHESTER | 561.690.3908 | JCHESTER@MORNING-CALM.COM

# FNBCC PLAZA @ 301 YAMATO

SUITE 2121 | 2,188 SQ.FT.



MORNING CALM  
ADVISORS

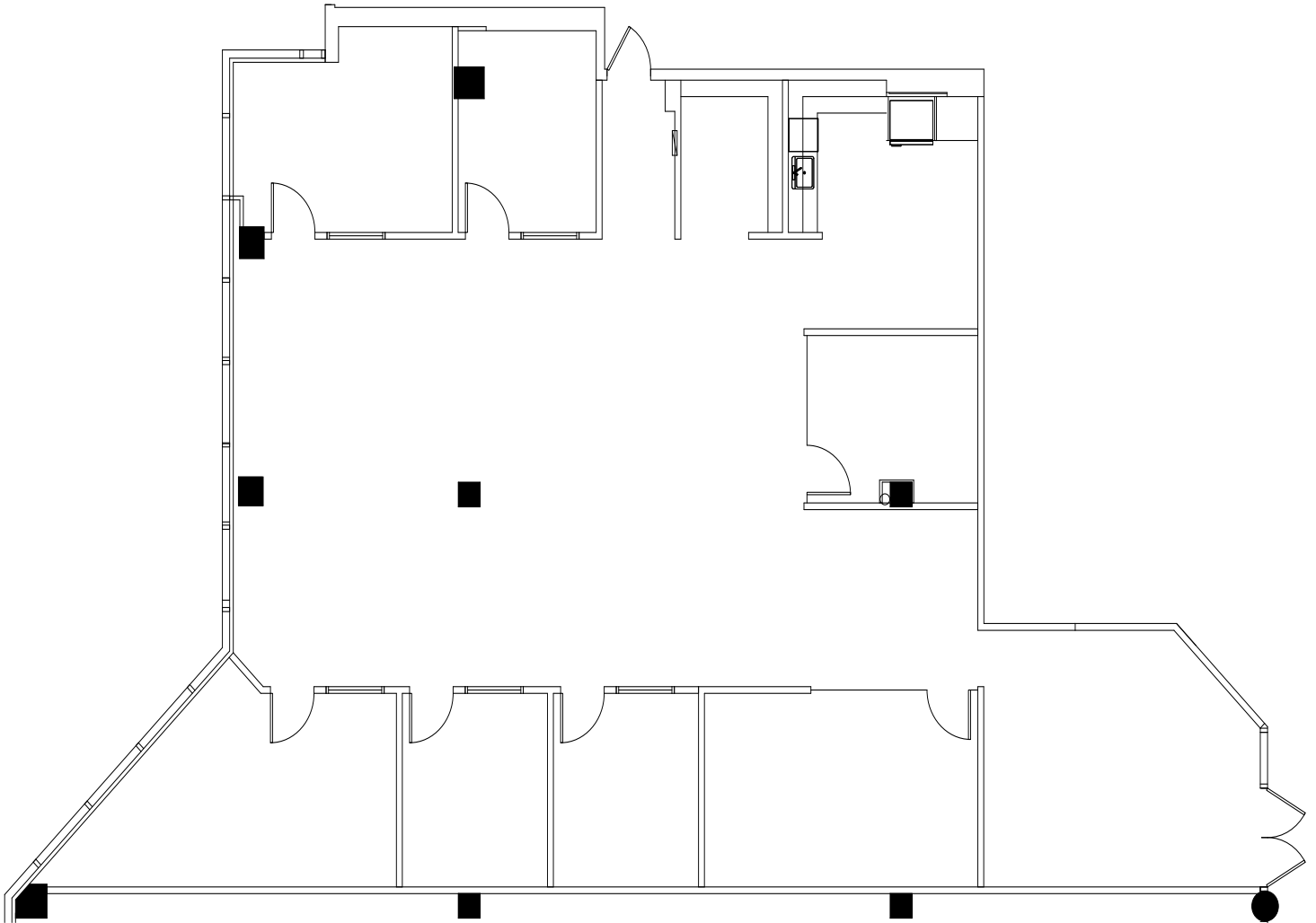
## FOR MORE INFORMATION

BEN ELEAZER | 561.758.4130 | BELEAZER@MORNING-CALM.COM

JUSTIN CHESTER | 561.690.3908 | JCHESTER@MORNING-CALM.COM

# FNBCC PLAZA @ 301 YAMATO

SUITE 1270 | 3,799 SQ.FT.



MORNING CALM  
ADVISORS

FOR MORE INFORMATION

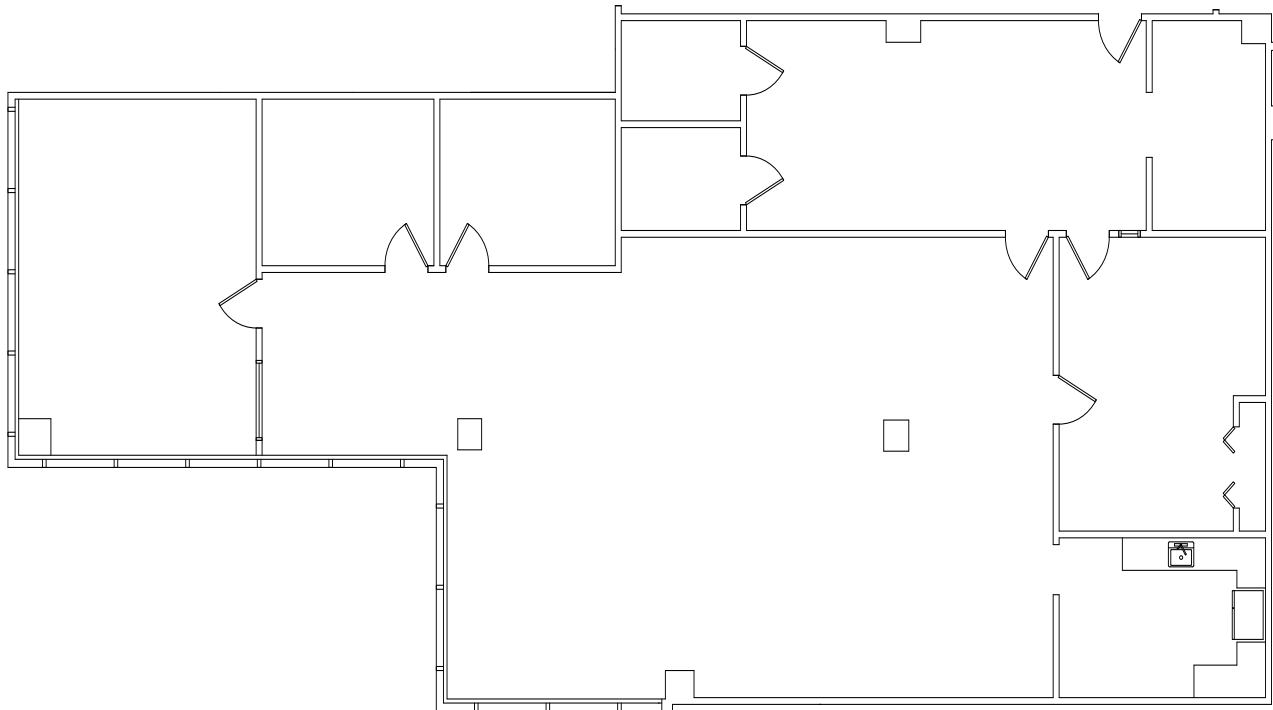
BEN ELEAZER | 561.758.4130 | BELEAZER@MORNING-CALM.COM

JUSTIN CHESTER | 561.690.3908 | JCHESTER@MORNING-CALM.COM

morning-calm.com | 561.383.2400 | 301 Yamato Road, Suite 4160, Boca Raton, FL 33431

# FNBCC PLAZA @ 301 YAMATO

SUITE 3110 | 3,819 SQ.FT.



MORNING CALM  
ADVISORS

## FOR MORE INFORMATION

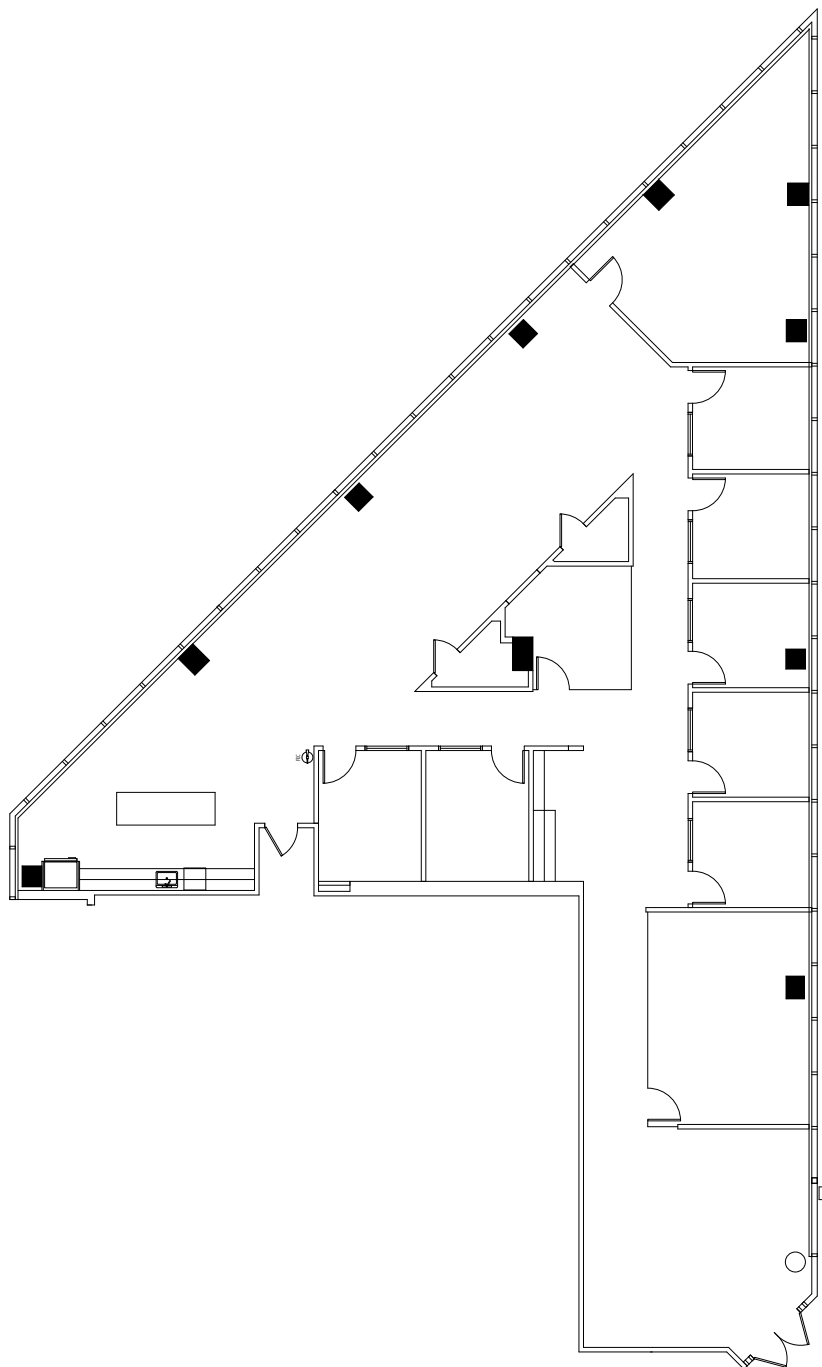
BEN ELEAZER | 561.758.4130 | BELEAZER@MORNING-CALM.COM

JUSTIN CHESTER | 561.690.3908 | JCHESTER@MORNING-CALM.COM



# FNBCC PLAZA @ 301 YAMATO

SUITE 1280 | 5,103 SQ.FT.



MORNING CALM  
ADVISORS

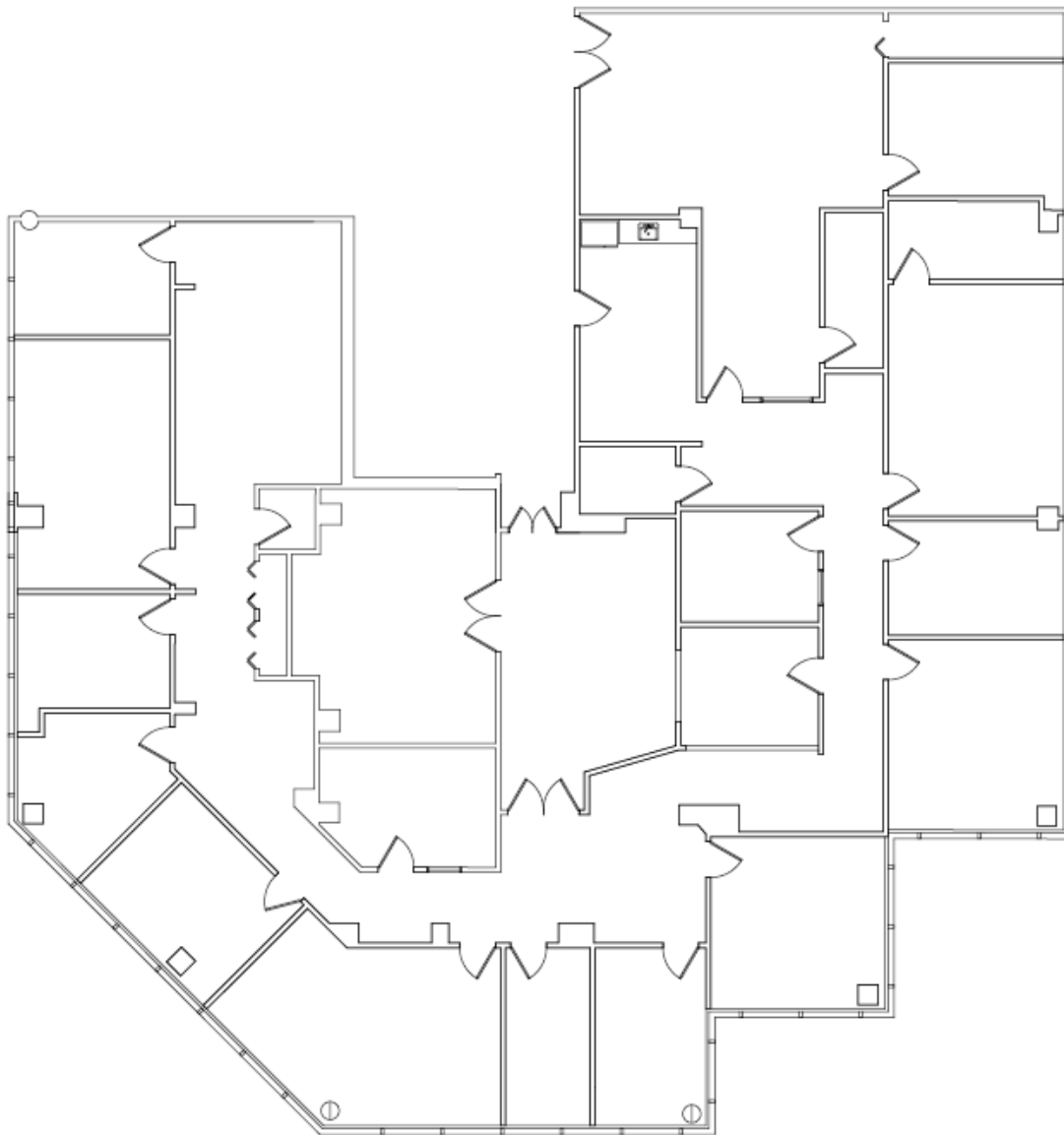
## FOR MORE INFORMATION

BEN ELEAZER | 561.758.4130 | BELEAZER@MORNING-CALM.COM

JUSTIN CHESTER | 561.690.3908 | JCHESTER@MORNING-CALM.COM

# FNBCC PLAZA @ 301 YAMATO

SUITE 4100 | 7,738 SQ.FT.



MORNING CALM  
ADVISORS

## FOR MORE INFORMATION

BEN ELEAZER | 561.758.4130 | BELEAZER@MORNING-CALM.COM

JUSTIN CHESTER | 561.690.3908 | JCHESTER@MORNING-CALM.COM

# FNBCC PLAZA @ 301 YAMATO

SUITE 3200 | 9,108 SQ.FT.



MORNING CALM  
ADVISORS

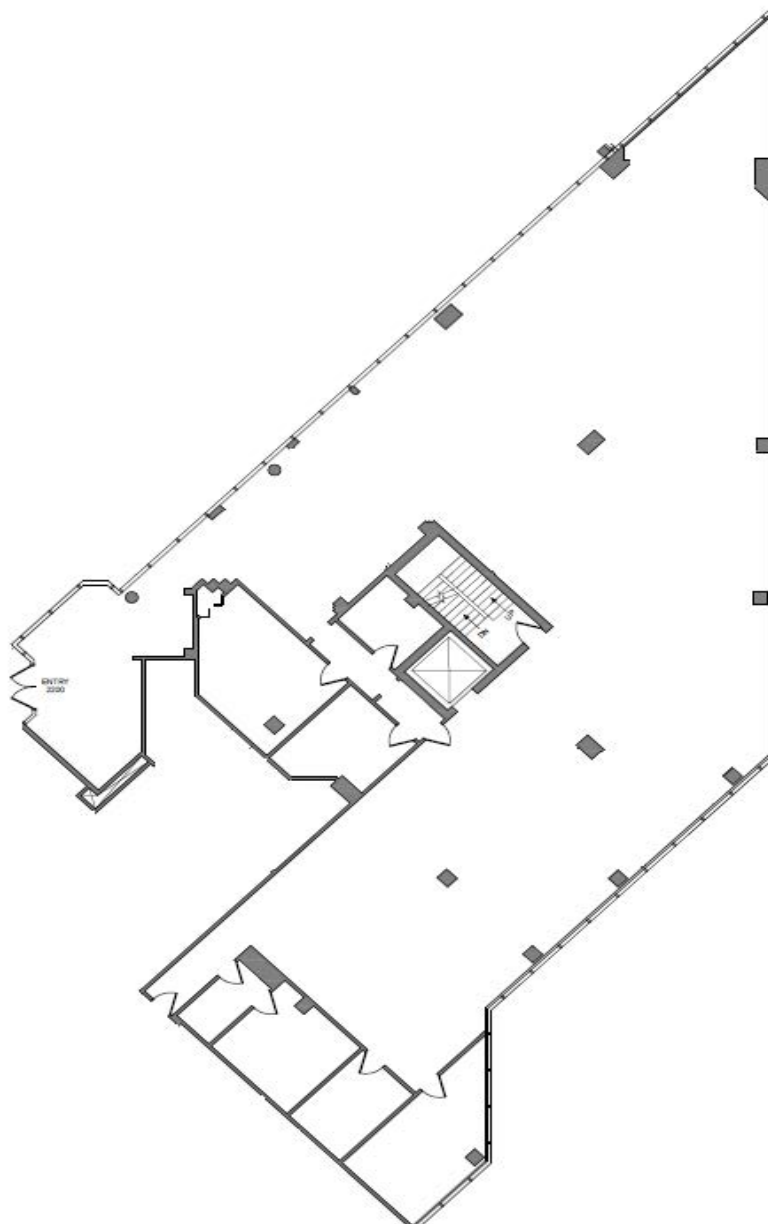
## FOR MORE INFORMATION

BEN ELEAZER | 561.758.4130 | [BELEAZER@MORNING-CALM.COM](mailto:BELEAZER@MORNING-CALM.COM)

JUSTIN CHESTER | 561.690.3908 | [JCHESTER@MORNING-CALM.COM](mailto:JCHESTER@MORNING-CALM.COM)

# FNBCC PLAZA @ 301 YAMATO

SUITE 2250 | 9,609 SQ.FT.



MORNING CALM  
ADVISORS

## FOR MORE INFORMATION

BEN ELEAZER | 561.758.4130 | BELEAZER@MORNING-CALM.COM

JUSTIN CHESTER | 561.690.3908 | JCHESTER@MORNING-CALM.COM