

Bolton Plaza

21510-21590 Willamette Drive, West Linn, OR 97068



Bolton Plaza is close to Bolton Park, I-205, and West Linn High School. This retail shopping center benefits from strong demographics arising from the affluent West Linn surrounding neighborhoods. The center has plentiful parking to go along with easy access and very strong traffic counts on Hwy 43.

AVAILABLE:

900 SF 2nd Floor

1,044 SF 1st Floor

900 SF Lower Level

All 3 for \$1,900 Gross Rent

Paul Miller | 503-550-6776 | 503 755-6733 | paul@meridiancommercialnw.com

16016 Boones Ferry Road Suite 200 Lake Oswego Oregon 97035

All information contained herein was obtained from sources deemed reliable. No guarantee is made with respect to accuracy. Specifications subject to change without notice.

Bolton Plaza

21510-21590 Willamette Drive, West Linn, OR 97068



Paul Miller | 503-550-6776 | 503 755-6733 | paul@meridiancommercialnw.com

16016 Boones Ferry Road Suite 200 Lake Oswego Oregon 97035

All information contained herein was obtained from sources deemed reliable. No guarantee is made with respect to accuracy. Specifications subject to change without notice.



1st Floor Retail



1st Floor Retail

Paul Miller | 503-550-6776 | 503 755-6733 | paul@meridiancommercialnw.com

16016 Boones Ferry Road Suite 200 Lake Oswego Oregon 97035

All information contained herein was obtained from sources deemed reliable. No guarantee is made with respect to accuracy. Specifications subject to change without notice.



Lower Level
3 Treatment Rooms

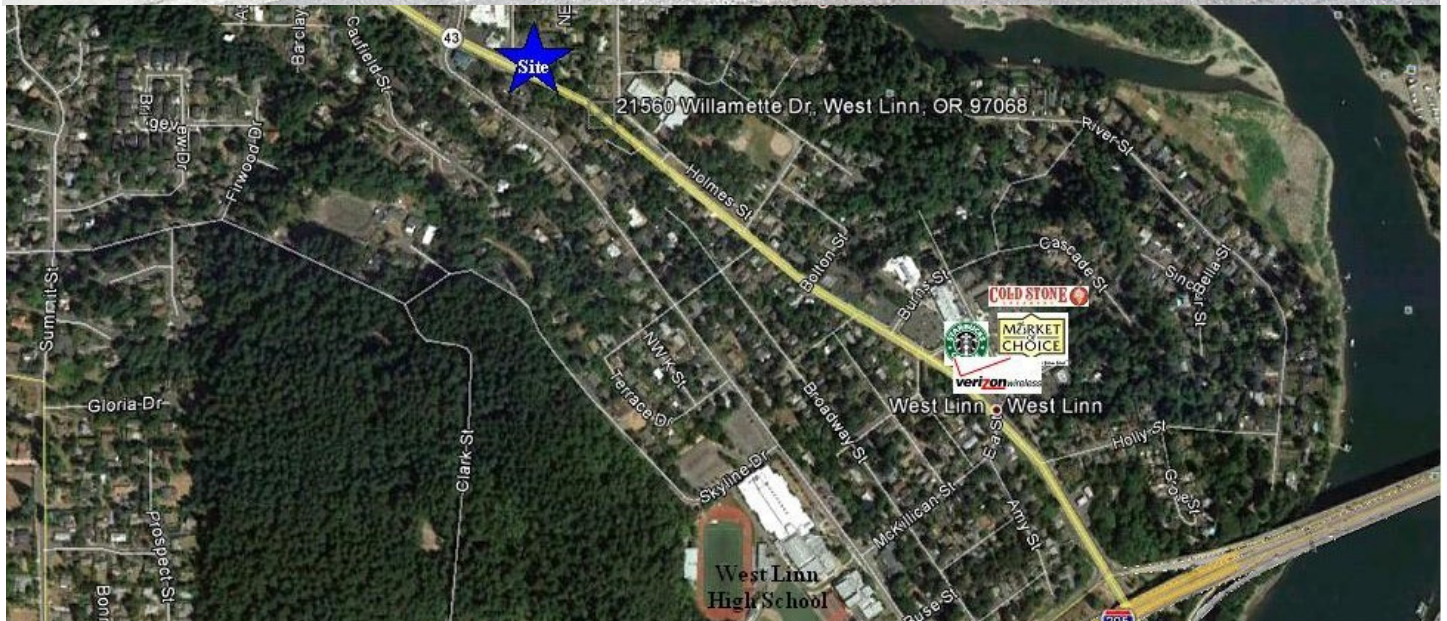
Paul Miller | 503-550-6776 | 503 755-6733 | paul@meridiancommercialnw.com

16016 Boones Ferry Road Suite 200 Lake Oswego Oregon 97035

All information contained herein was obtained from sources deemed reliable. No guarantee is made with respect to accuracy. Specifications subject to change without notice.

Bolton Plaza

21510-21590 Willamette Drive, West Linn, OR 97068



Paul Miller | 503-550-6776 | 503 755-6733 | paul@meridiancommercialnw.com

16016 Boones Ferry Road Suite 200 Lake Oswego Oregon 97035

All information contained herein was obtained from sources deemed reliable. No guarantee is made with respect to accuracy. Specifications subject to change without notice.