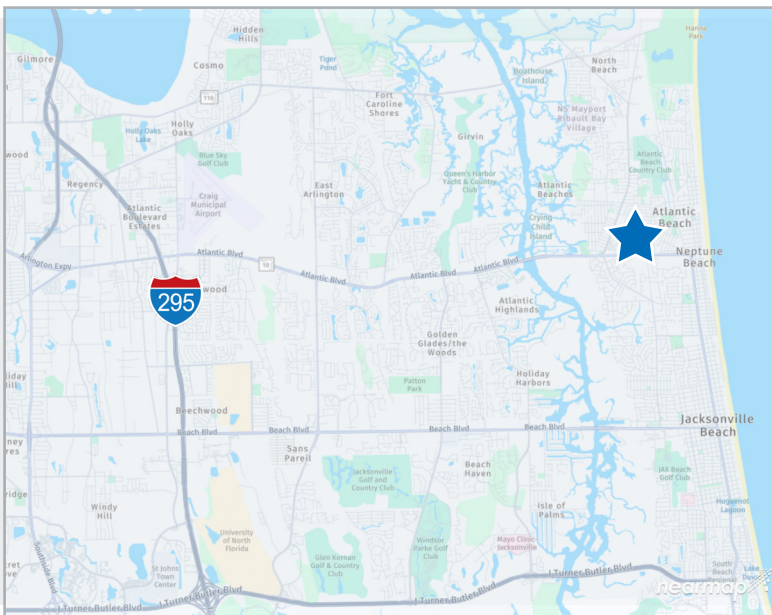


675-677 Atlantic Boulevard

Jacksonville, FL 32233



±1,700 SF RETAIL SPACE FOR LEASE IN ATLANTIC BEACH



- Clean retail space in highly sought after Atlantic Beach sub-market
- Frontage on Atlantic Blvd (signage available)
- Located in Atlantic Beach with close proximity to Atlantic Beach Town Center's eclectic mixture of restaurants and retailers
- High volume Publix with established customer base just across the street
- Direct visibility to 34,000 cars daily from Atlantic Blvd

For further information, please contact our exclusive agent:

Jeffrey Frandsen Senior Vice President
jfrandsen@phoenixrealty.net

Newmark Phoenix Realty Group, Inc.
904.399.5222
10739 Deerwood Park Blvd. #310
www.phoenixrealty.net

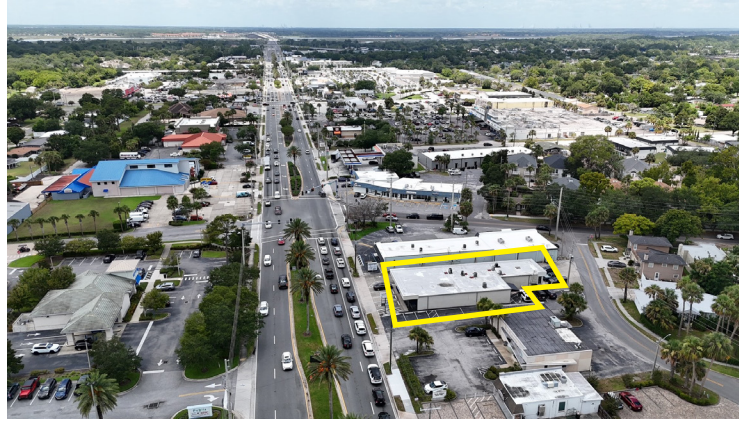
Procuring broker shall only be entitled to a commission, calculated in accordance with the rates approved by our principal only if such procuring broker executes a brokerage agreement acceptable to us and our principal and the conditions as set forth in the brokerage agreement are fully and unconditionally satisfied. Although all information furnished regarding property for sale, rental, or financing is from sources deemed reliable, such information has not been verified and no express representation is made nor is any to be implied as to the accuracy thereof and it is submitted subject to errors, omissions, change of price, rental or other conditions, prior sale, lease or financing, or withdrawal without notice and to any special conditions imposed by our principal.

LEASE RATE: Call For Pricing

NEWMARK
PHOENIX REALTY GROUP

Property Photos

675-677 Atlantic Boulevard | Jacksonville, FL 32233



www.phoenixrealty.net

Although all information furnished regarding property for sale, rental, or financing is from sources deemed reliable, such information has not been verified and no express representation is made nor is any to be implied as to the accuracy thereof and it is submitted subject to errors, omissions, change of price, rental or other conditions, prior sale, lease or financing, or withdrawal without notice and to any special conditions imposed by our principal.

NEWMARK
PHOENIX REALTY GROUP