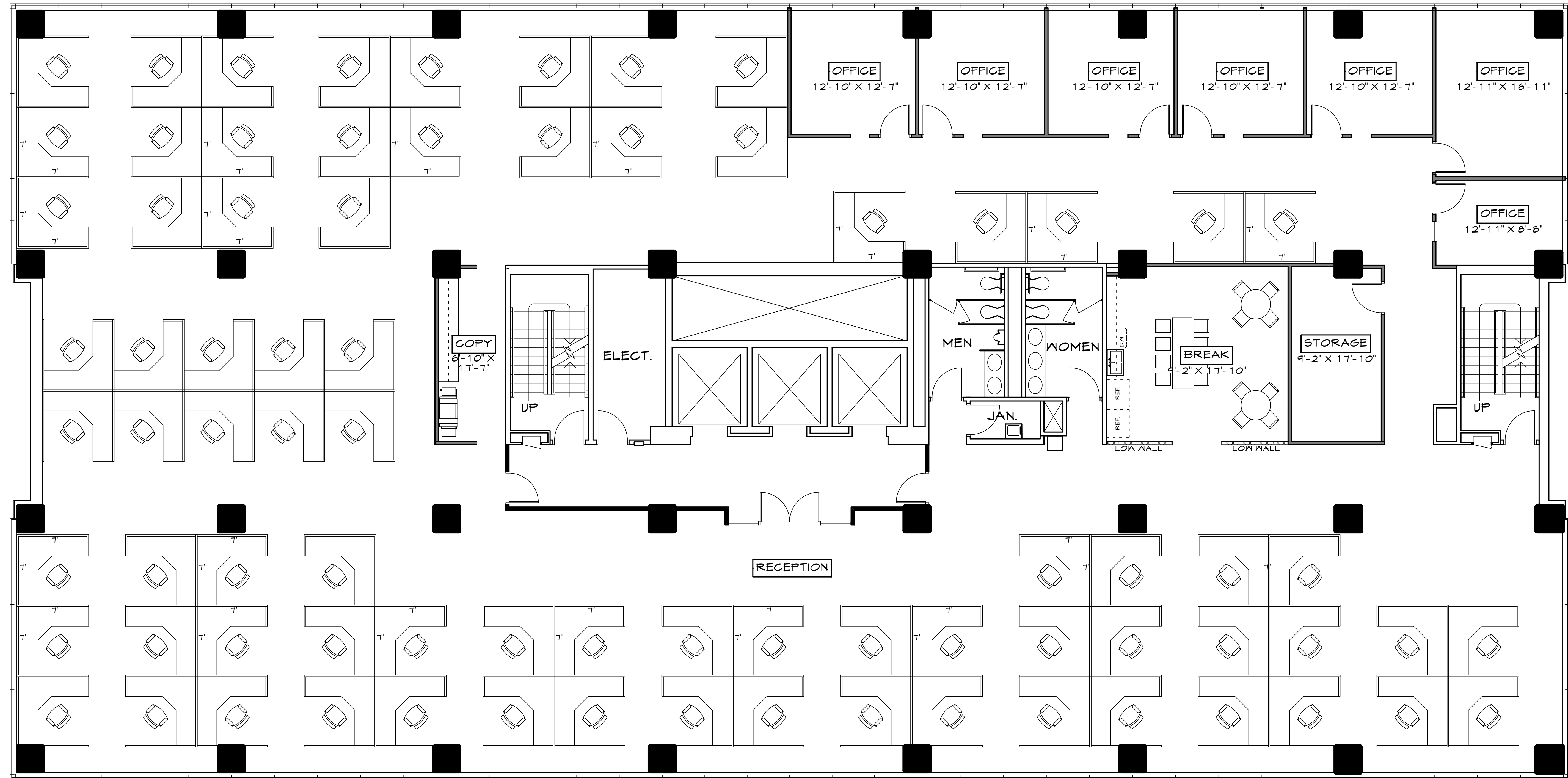


77 WORKSTATIONS



For more information, please contact:

Doug Wulf
+1 303 312 4218
doug.wulf@cushwake.com

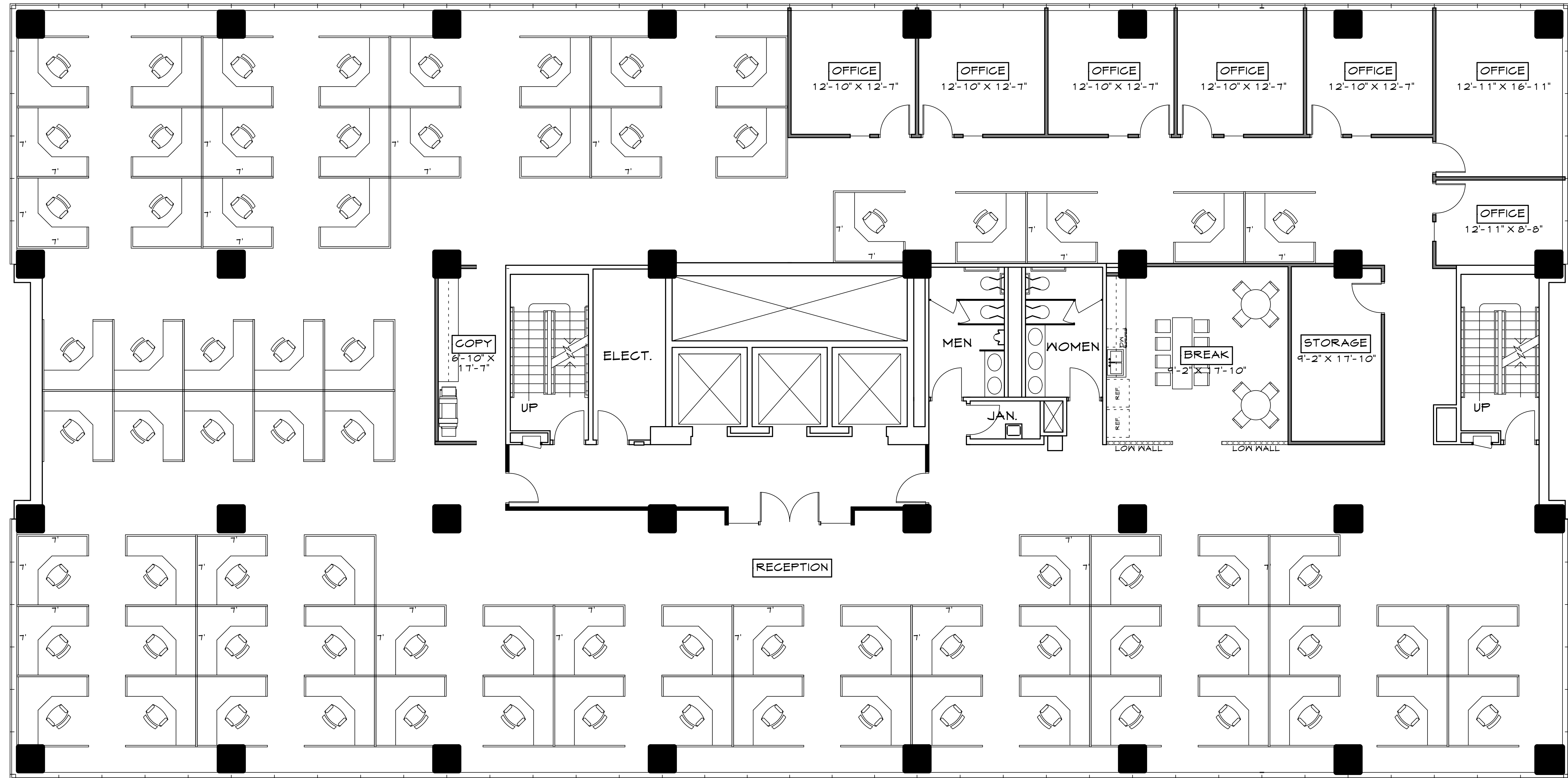
Dan Miller
+1 303 312 4272
dan.miller@cushwake.com

Whitney Hake
+1 303 312 4286
whitney.hake@cushwake.com

1515 Arapahoe Street, Suite 1200
Denver, Colorado 80202

T +1 303 292 3700
F +1 303 534 8270
www.cushwake.com

77 WORKSTATIONS



For more information, please contact:

Doug Wulf
+1 303 312 4218
doug.wulf@cushwake.com

Dan Miller
+1 303 312 4272
dan.miller@cushwake.com

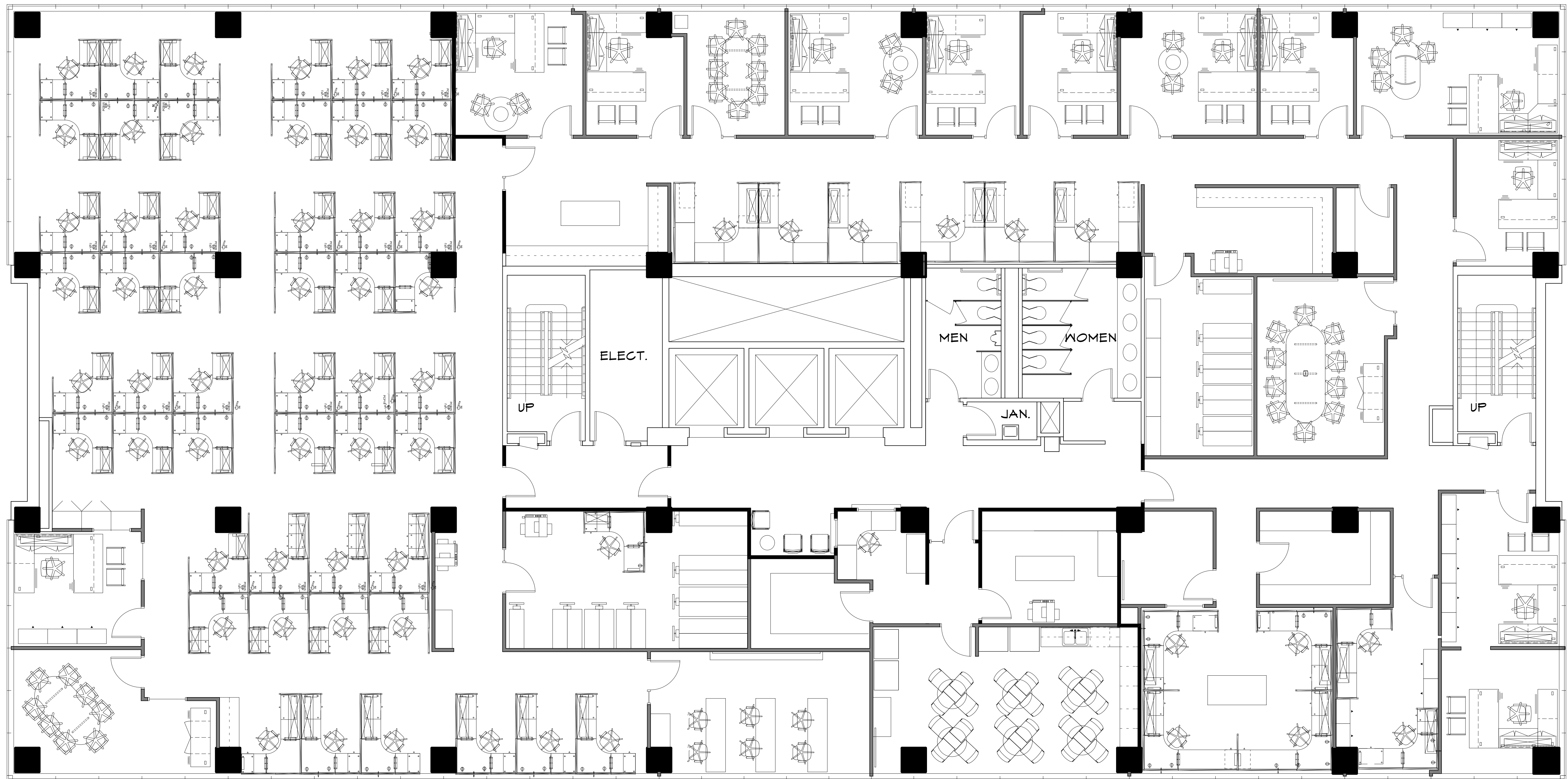
Whitney Hake
+1 303 312 4286
whitney.hake@cushwake.com

1515 Arapahoe Street, Suite 1200
Denver, Colorado 80202

T +1 303 292 3700
F +1 303 534 8270

www.cushwake.com

12 DESKS AND 61 WORKSTATIONS



For more information, please contact:

Doug Wulf
+1 303 312 4218
doug.wulf@cushwake.com

Dan Miller
+1 303 312 4272
dan.miller@cushwake.com

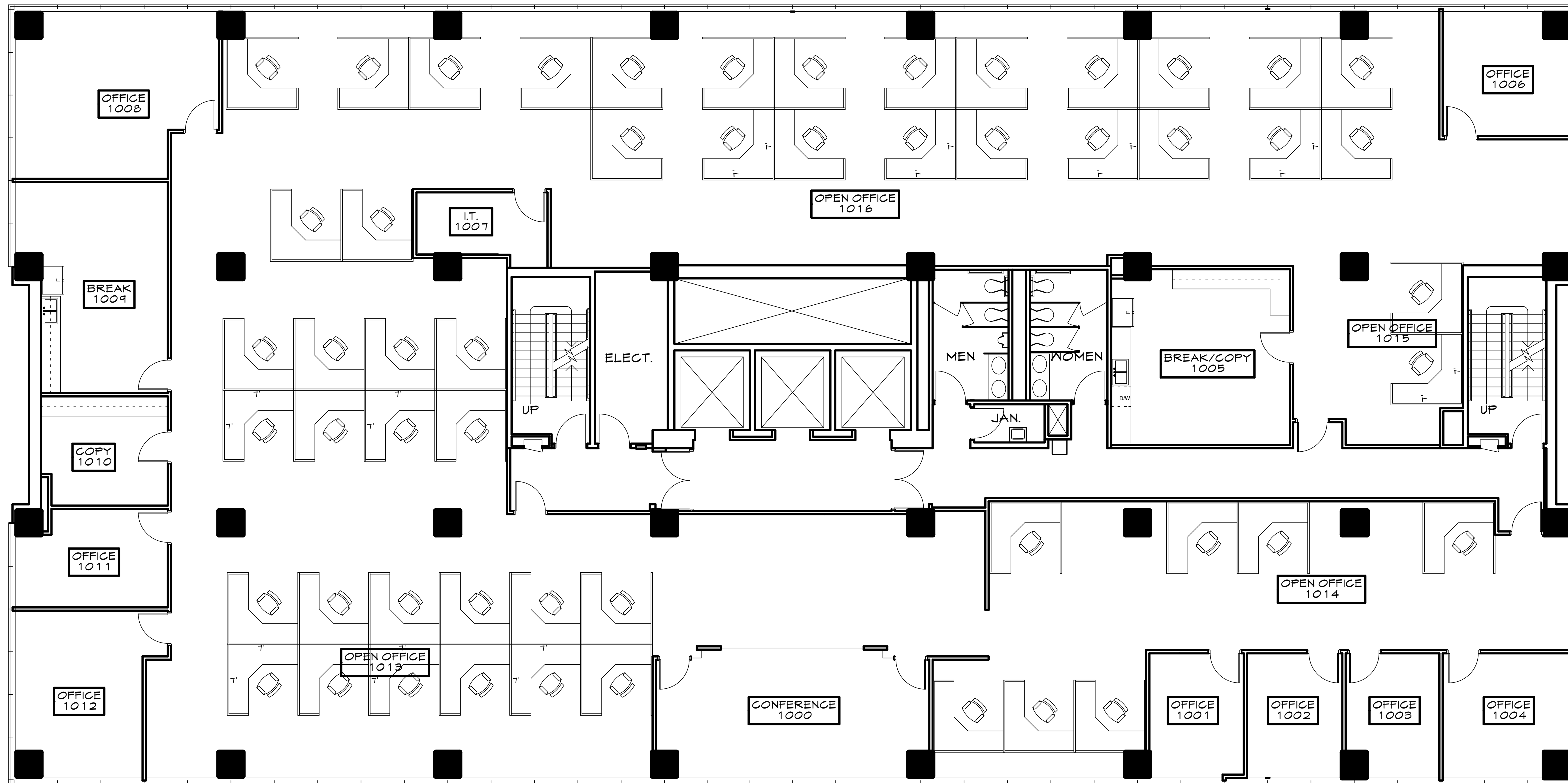
Whitney Hake
+1 303 312 4286
whitney.hake@cushwake.com

1515 Arapahoe Street, Suite 1200
Denver, Colorado 80202

T +1 303 292 3700
F +1 303 534 8270

www.cushwake.com

53 WORKSTATIONS



For more information, please contact:

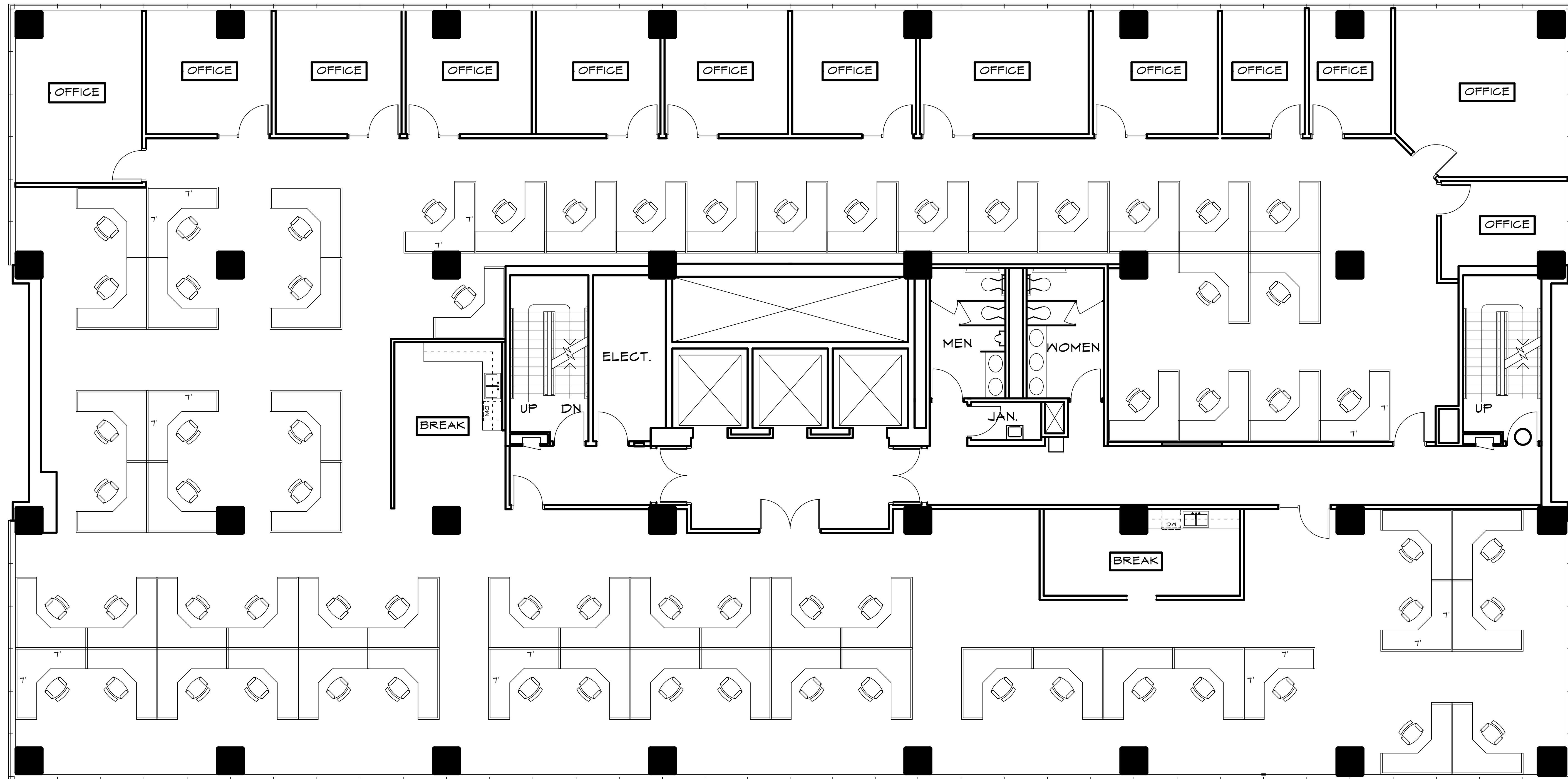
Doug Wulf +1 303 312 4218 doug.wulf@cushwake.com	Dan Miller +1 303 312 4272 dan.miller@cushwake.com	Whitney Hake +1 303 312 4286 whitney.hake@cushwake.com
---	---	---

1515 Arapahoe Street, Suite 1200
Denver, Colorado 80202

T +1 303 292 3700
F +1 303 534 8270

www.cushwake.com

67 WORKSTATIONS



For more information, please contact:

Doug Wulf
+1 303 312 4218
doug.wulf@cushwake.com

Dan Miller
+1 303 312 4272
dan.miller@cushwake.com

Whitney Hake
+1 303 312 4286
whitney.hake@cushwake.com

1515 Arapahoe Street, Suite 1200
Denver, Colorado 80202

T +1 303 292 3700
F +1 303 534 8270

www.cushwake.com