

1027 Yonge St

Retail Opportunity in Rosedale with Direct Frontage onto Yonge St

FOR LEASE

Sun Quach*

Sun Quach*

Managing Director

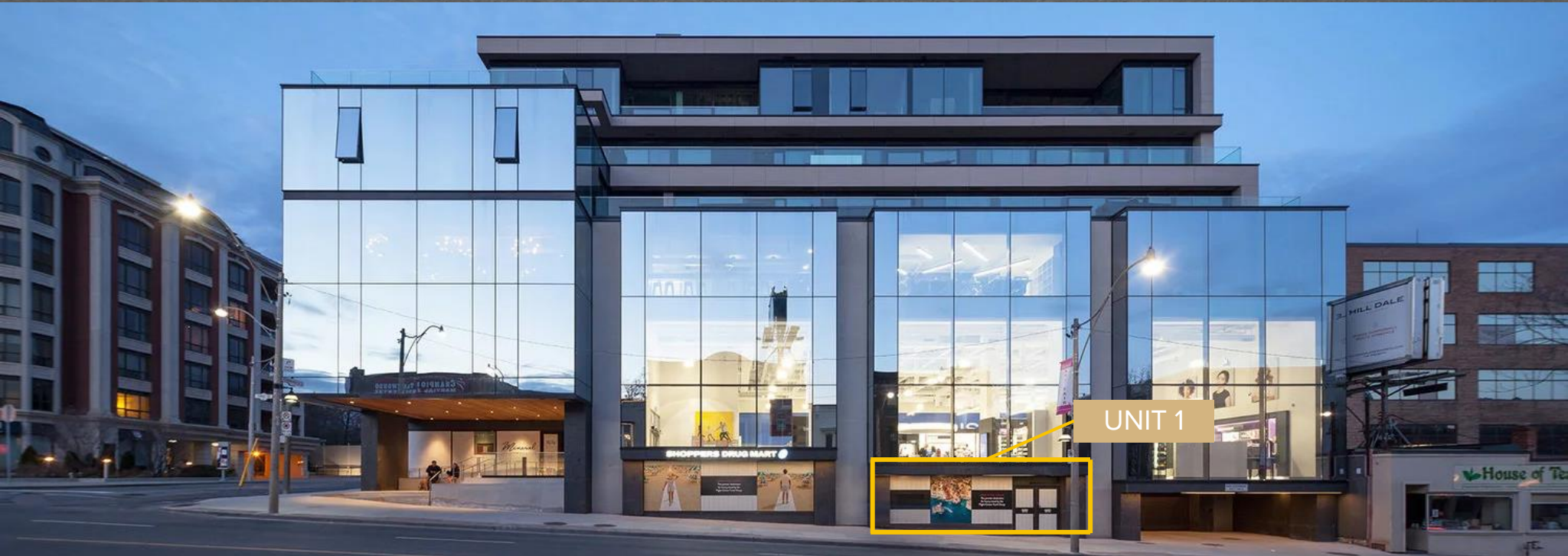
647 873 3585

sun@roxre.ca

* Sales Representative

UNIT 1





Opportunity

Roxborough Realty is pleased to present a rare retail leasing opportunity at 1027 Yonge Street in the heart of the affluent Rosedale neighbourhood. Situated on the ground floor of this mixed-use building with excellent frontage on Yonge St, we are excited to welcome your retail business to this busy node.

AVAILABILITIES	CRU-1 Retail
ASKING RENT	Please contact for more information
TMI	\$25.00
FLOOR PLAN	1,487 sq. ft retail
FRONTAGE	20ft + onto Yonge St
POSSESSION DATE	Immediate

Leasing Highlights



Turnkey Retail Space

Modern retail space, exceptionally built out and ready for immediate tenant occupancy, located in a rare retail node.



Yonge St Frontage

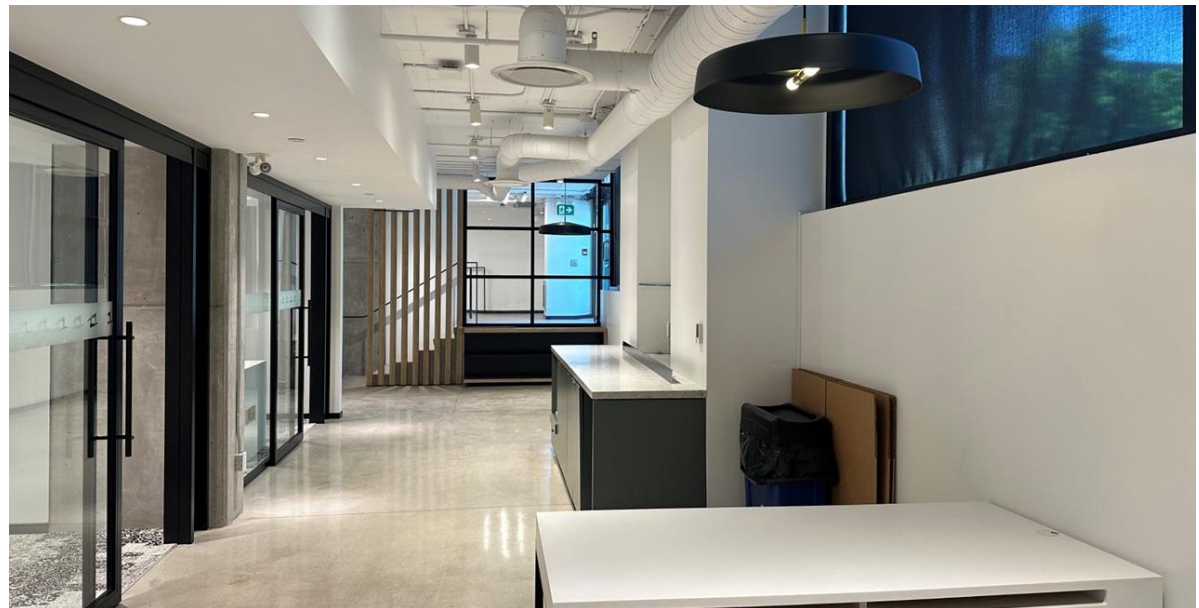
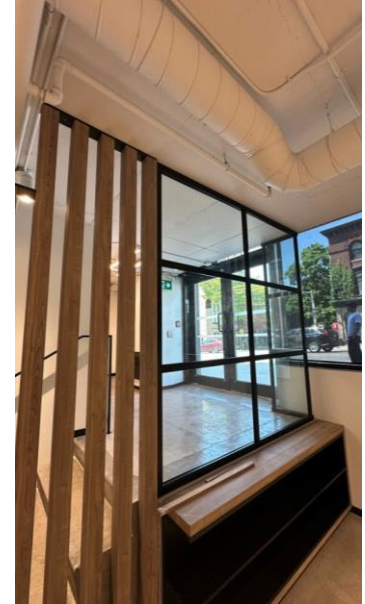
Frontage on the busy and high-traffic Yonge St in Rosedale, one of Toronto's most affluent neighbourhoods.



Accessible Unit

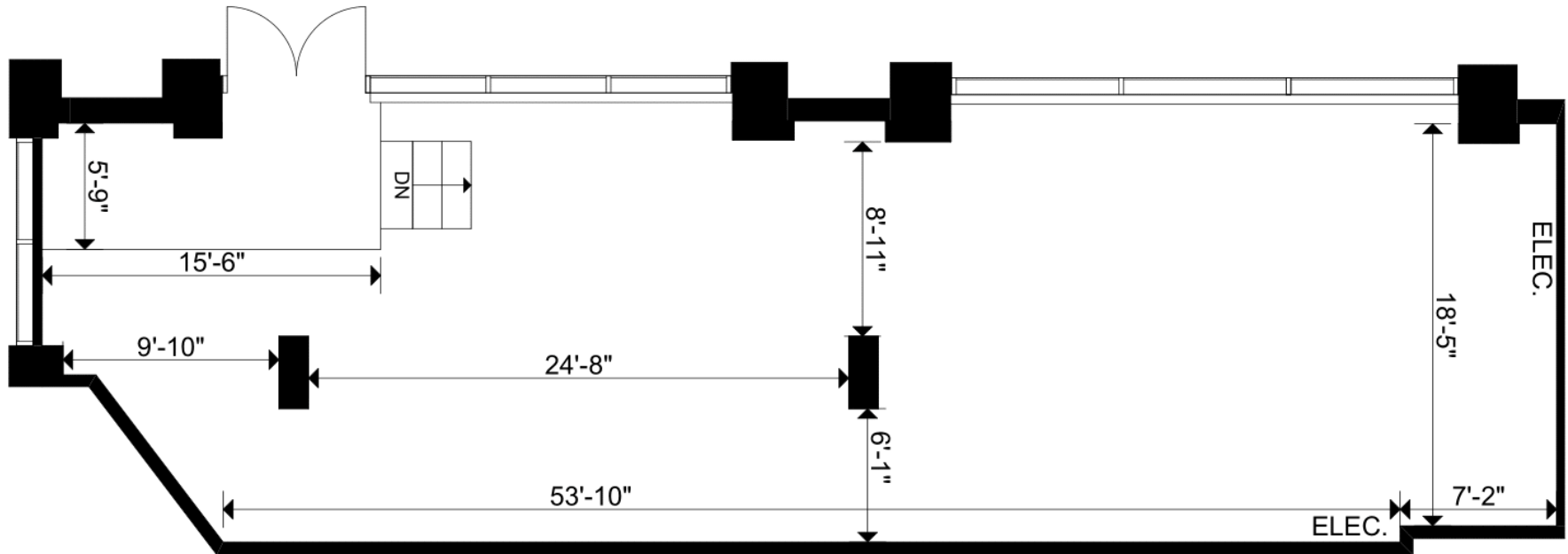
A pre-existing accessibility elevator to the sub-level ensures that both you and your customers' accessibility needs are met.





Floor Plan

Ground Floor Retail





Area Overview

Rosedale, Toronto

Rosedale is a prestigious and affluent neighborhood in central Toronto, renowned for its historic mansions, tree-lined streets, and lush ravines. Despite its serene residential environment, the area along Yonge Street experiences significant traffic due to its proximity to the bustling downtown core. The high-income residents of Rosedale possess significant spending power, supporting a vibrant local economy with upscale boutiques, gourmet dining, and exclusive services. Its combination of elegance, tranquility, and urban convenience makes Rosedale one of Toronto's most desirable neighborhoods.

Population
2km radius

150,917

Household Income
5km households

\$177,005

Children
0-19 years

15%

Adult
20-54 years

60%

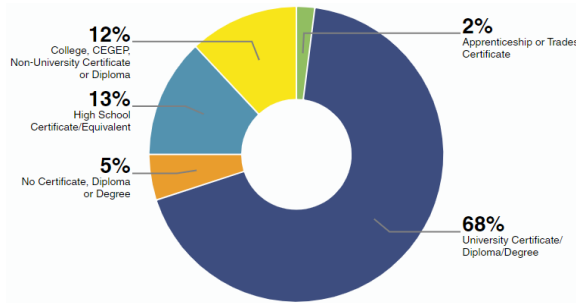
Pre-Retirement
55-64 years

11%

Seniors
65+ years

14%

Area Education Status



Retail

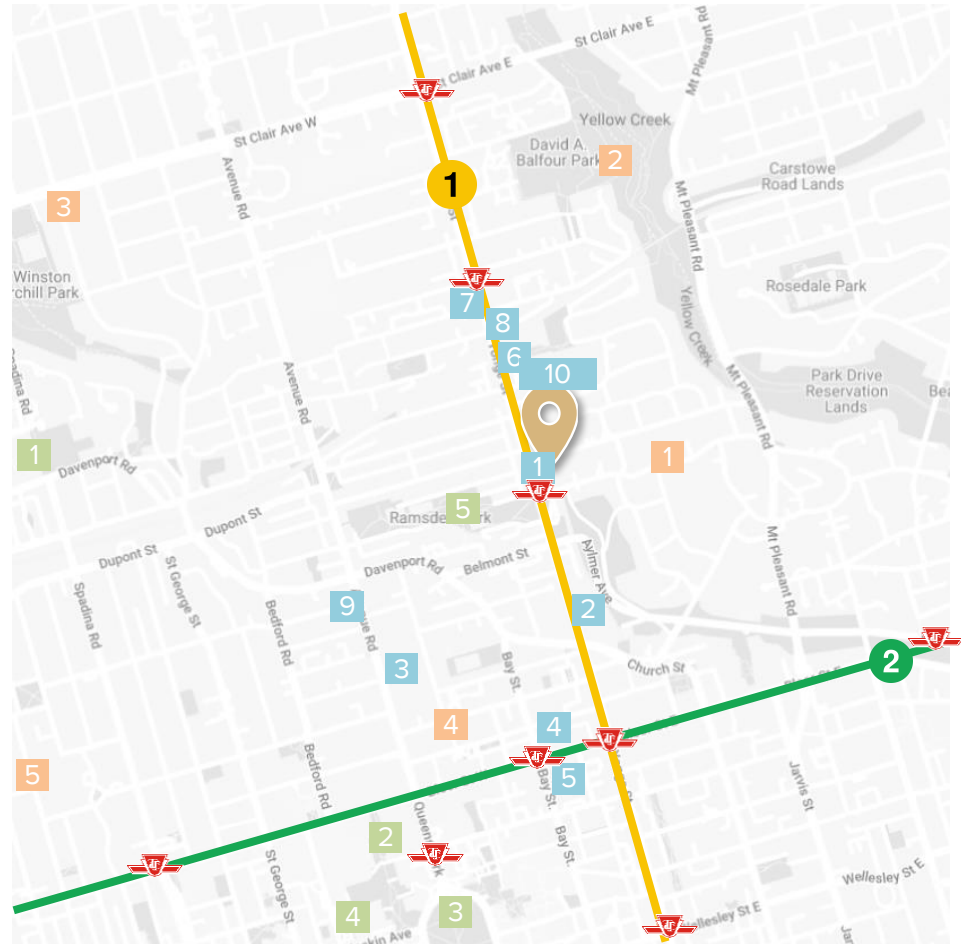
- 1 Shoppers Drug Mart
- 2 Canadian Tire
- 3 Yorkville Village
- 4 Holt Renfrew Centre
- 5 Manulife Centre
- 6 Teroni
- 7 Boxcar Social
- 8 LCBO
- 9 Sotto Sotto
- 10 Harvest Wagon

Neighborhoods

- 1 Rosedale
- 2 Summerhill
- 3 Casa Loma
- 4 Yorkville
- 5 The Annex

Points of Interest

- 1 Casa Loma
- 2 Royal Ontario Museum
- 3 Queens Park
- 4 University of Toronto
- 5 Ramsden Park



Contact for More Information

Sun Quach*

Managing Director

647 873 3585

sun@roxre.ca

* Sales Representative

Roxborough Realty

370 King Street W, Suite 805

Toronto, ON | M5V 1J9

416 741 3702

Visit our Website

ROXBOROUGHREALTY.CA