



McCULLY SHOPPING CENTER

We're Here For You!

1960 Kapiolani Boulevard, Honolulu, Hawaii 96826

FOR LEASE

In-Line Retail Space Near Waikiki



PROPERTY DESCRIPTION

McCully Shopping Center is a neighborhood shopping center located one block from Waikiki, Hawaii's largest and most recognized resort area. The property is also walking distance to both the Hawaii Convention Center and Ala Moana Shopping Center, a popular destination for both locals and visitors. This centrally located, two-story shopping center is situated in the heart of Honolulu and anchored by both national chains and well-known local businesses. The center offers much lower rental rates than neighboring Waikiki with ample customer parking. McCully Shopping Center is an excellent opportunity for a service provider, retail, or restaurant user to call home.

PROPERTY SNAPSHOT

Location: McCully - Moiliili

Land Area: Approx. 64,000 SF

Parking: 132 Spaces

Space Available:	Size:	Rent:	CAM:
Suite 108	932 SF	\$5.00 / SF / MO	\$3.95
Suite 111	984 SF	\$5.00 / SF / MO	\$3.95

Percentage Rent 8% over natural breakpoint

TRAFFIC COUNTS

Kapiolani Boulevard: Approx. 36,998 VPD

McCully Street: Approx. 22,220 VPD

DEMOGRAPHICS

Source: CoStar

	1 Mile	3 Mile	5 Mile
Population:	77,116	226,249	306,555
Total Households:	37,177	98,257	117,940
Avg. Household Income:	\$80,047	\$93,577	\$99,699



©2026 Sofos Realty Corporation. All information contained herein is obtained from sources deemed reliable. However, no representations or guarantees are made as to the accuracy thereof, and it is provided herein subject to errors, omissions, changes and withdrawals without notice. Offeror and/or his agent should confirm this information prior to making any offer. Buyer agrees that all negotiation shall be conducted through Sofos Realty Corporation only. No subagency is offered or intended.



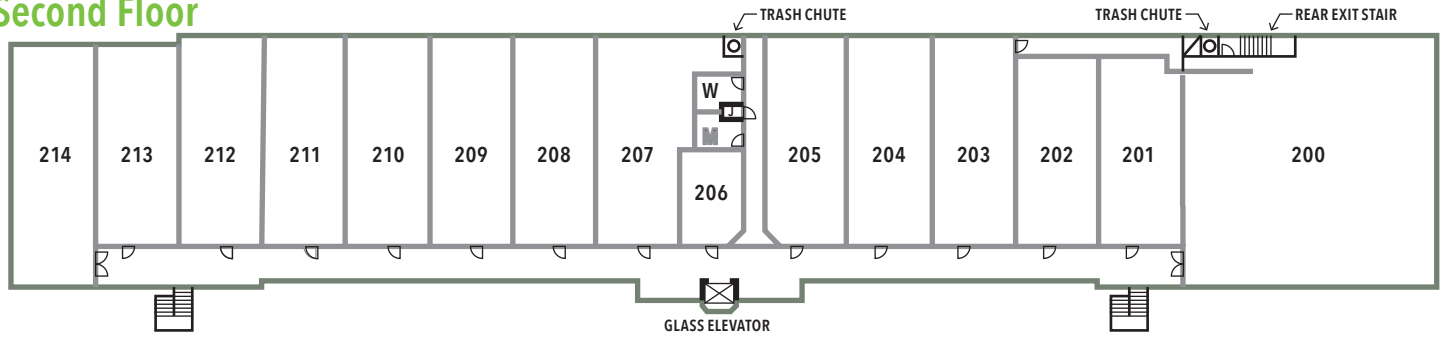


MCCULLY SHOPPING CENTER

Ground Floor



Second Floor



Site Plans are for marketing purposes only and may not accurately reflect the property.