



2222 Ponce de Leon Boulevard

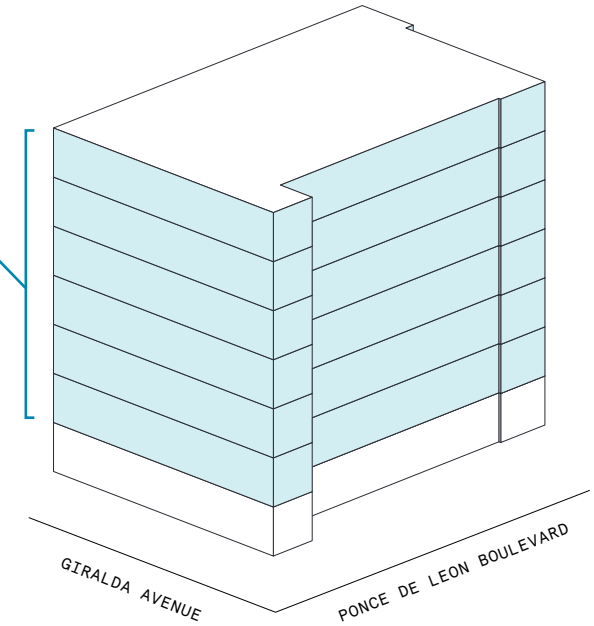
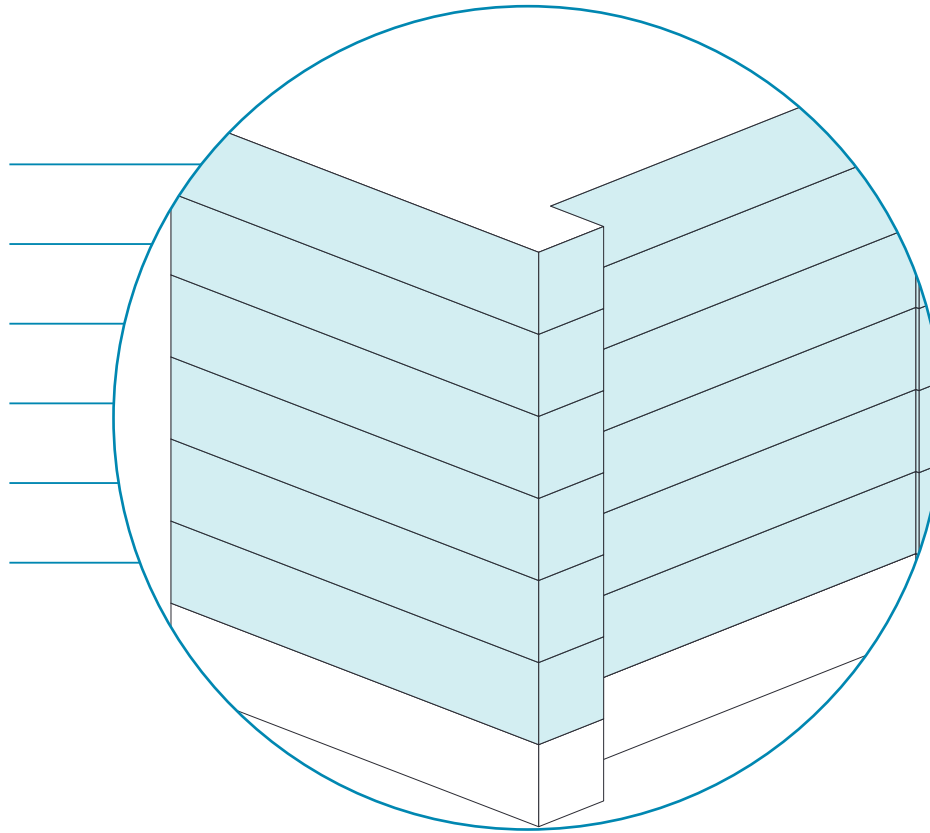
Space availability summary

WeWork @ 2222 Ponce de Leon Boulevard
Miami, FL

wework

[VIEW VIRTUAL TOUR](#)

7th Floor	6,809 RSF
6th Floor	6,787 RSF
5th Floor	6,821 RSF
4th Floor	6,833 RSF
3rd Floor	4,953 RSF
2nd Floor	3,791 RSF



35,995 RSF

TOTAL WEWORK RSF

2222 Ponce de Leon Boulevard

At a glance

Brand new suites offering flexible size & term

Dedicated, private office suites available from 62 to 1,265 RSF

Move-in ready full floor of 3,791 RSF — furnished & wired

7

TOTAL BUILDING FLOORS

57,264

TOTAL BUILDING SQ FT

All dimensions are approximate and subject to variances. It is your obligation to independently verify the particulars of the property. WeWork reserves the right to make changes.



2222 Ponce de Leon's private suites and meeting rooms are warm, inviting, and full of natural light.



Unique light fixtures and custom artwork by Miami artist Boy Kong give vibrant personality to the space's bright, open shared workspaces.

Convenience and charm in historic Coral Gables

Located in the heart of historic and beautiful Coral Gables, 2222 Ponce de Leon Boulevard offers six floors of flexible workspace in a sunny and vibrant setting. Members of this custom-designed space can enjoy the bespoke terrazzo bar and expansive outdoor terrace or head downstairs to check out the local food and bar scene. The surrounding neighborhood, features lush foliage and can't miss landmarks, including the Biltmore Hotel and Venetian Pool. Exploration is a breeze with designated parking and on-site bike storage.



Multi-purpose common areas invite conversation, collaboration, and community events.



Members enjoy private meeting rooms for small brainstorming sessions and larger meetings alike.

Sunny, playful, and inviting

2222 Ponce de Leon Boulevard's interior palette plays off the blush tones of the surrounding buildings in Coral Gables, offering a sunny, playful and inviting open space.

- The third-floor main lounge is the heart of the space, members come together to hang out, chat over coffee or get to know each other during community socials
- The main lounge features a custom mural by Miami artist Boy Kong, this vibrant space opens up to an outdoor area with tables and lounge seating
- Beautiful exposed concrete floors, ceilings and columns give unexpected character and texture to the space's softer, more refined elements
- A custom-built terrazzo bar spanning twenty-six feet, is a dynamic centerpiece and seats over twenty people at a time



Warm tones and natural light soften the building's industrial elements.



Neon signs inspired by sunny Coral Gables brighten up the space and add visual interest.



Read or lounge in a cozy nook of the library surrounded by lush botanical wallpaper.



On-site amenities

- Electronic keycard access
- Stocked pantry
- Private meeting rooms
- On-site staff
- Gender-neutral bathrooms



- US mail drop
- Phone booths
- Bicycle storage
- On-site parking
- Dog-friendly spaces
- Event space
- Access to car charging stations
- Outdoor space and terrazzo bar

Building specifications



Hours of operation

Monday - Friday: 8am-5pm



Ceiling heights

12 feet slab-to-slab



Fire strategy

Fully-sprinklered floors



Building

Built in 1976

Renovated in 2018

Designed by The Fullerton Group

Developed by Giralda PB, LLC.



Elevators

2 passenger elevators
with a capacity of 2500



Building size

7 stories

57,264 SF






HVAC

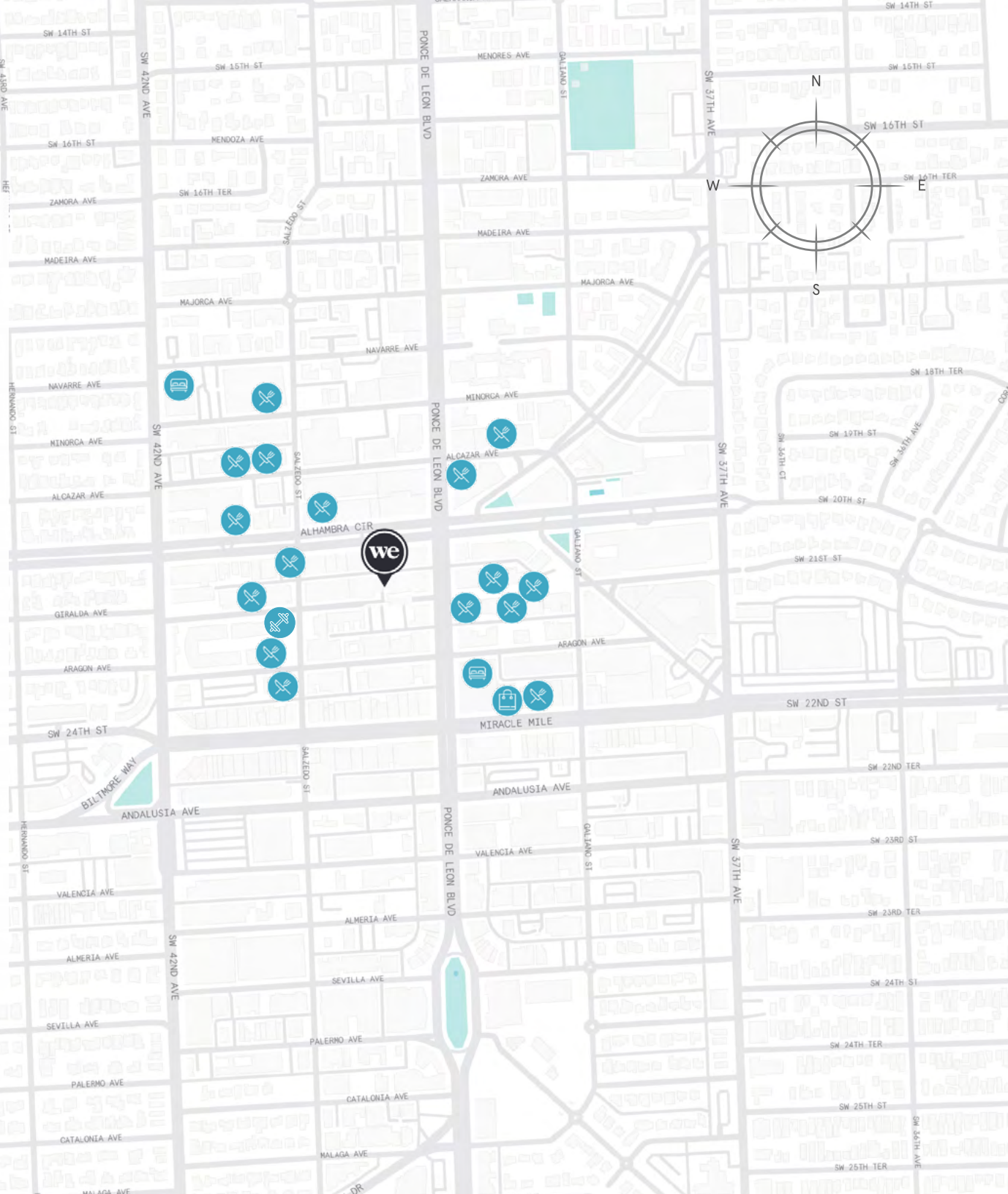
Monday - Friday: 8am-6pm

Work and play in the heart of Coral Gables

Originally conceived as a Spanish garden city by developer George Merrick in the 1920s, Coral Gables is home to historic design landmarks and lush foliage, with a flourishing business scene to match. Local restaurants like Cafe Demetrio, Shu Shin Izakaya, and the Green Gables Cafe are perfect for an afterwork bite, while the Miracle Mile offers even more shopping and dining options.

Distance to WeWork

Douglas Road Station	 Drive	6 min
Coconut Grove Station	 Drive	9 min
Miami International Airport	 Drive	13 min



2nd Floor

3,791 RSF

2

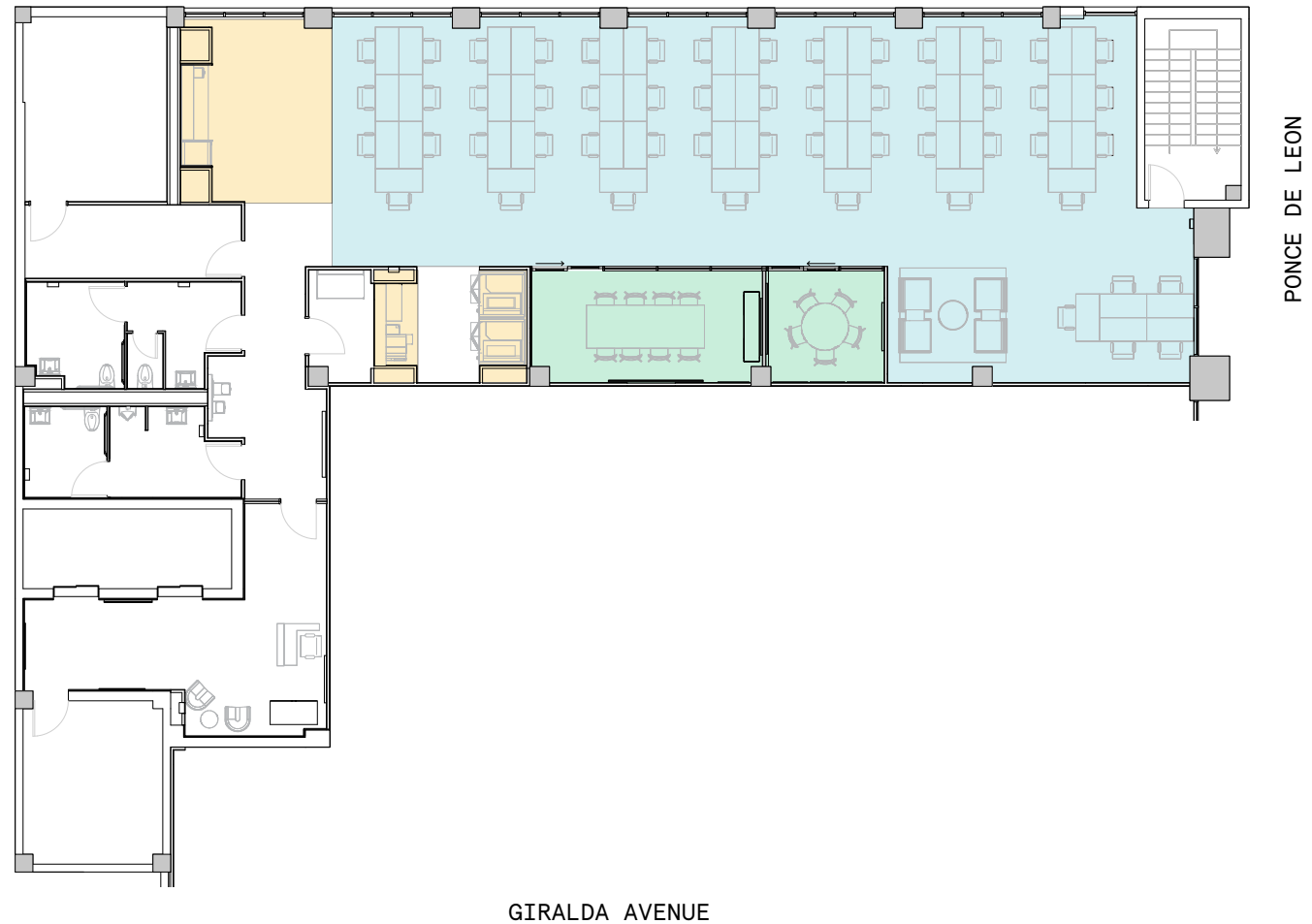
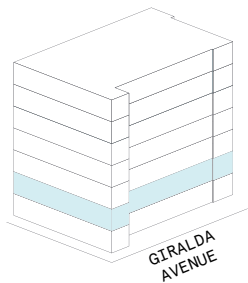
MEETING ROOM(S)

3

SHARED WORKSPACE(S)

LEGEND

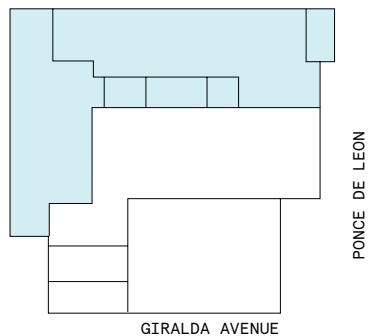
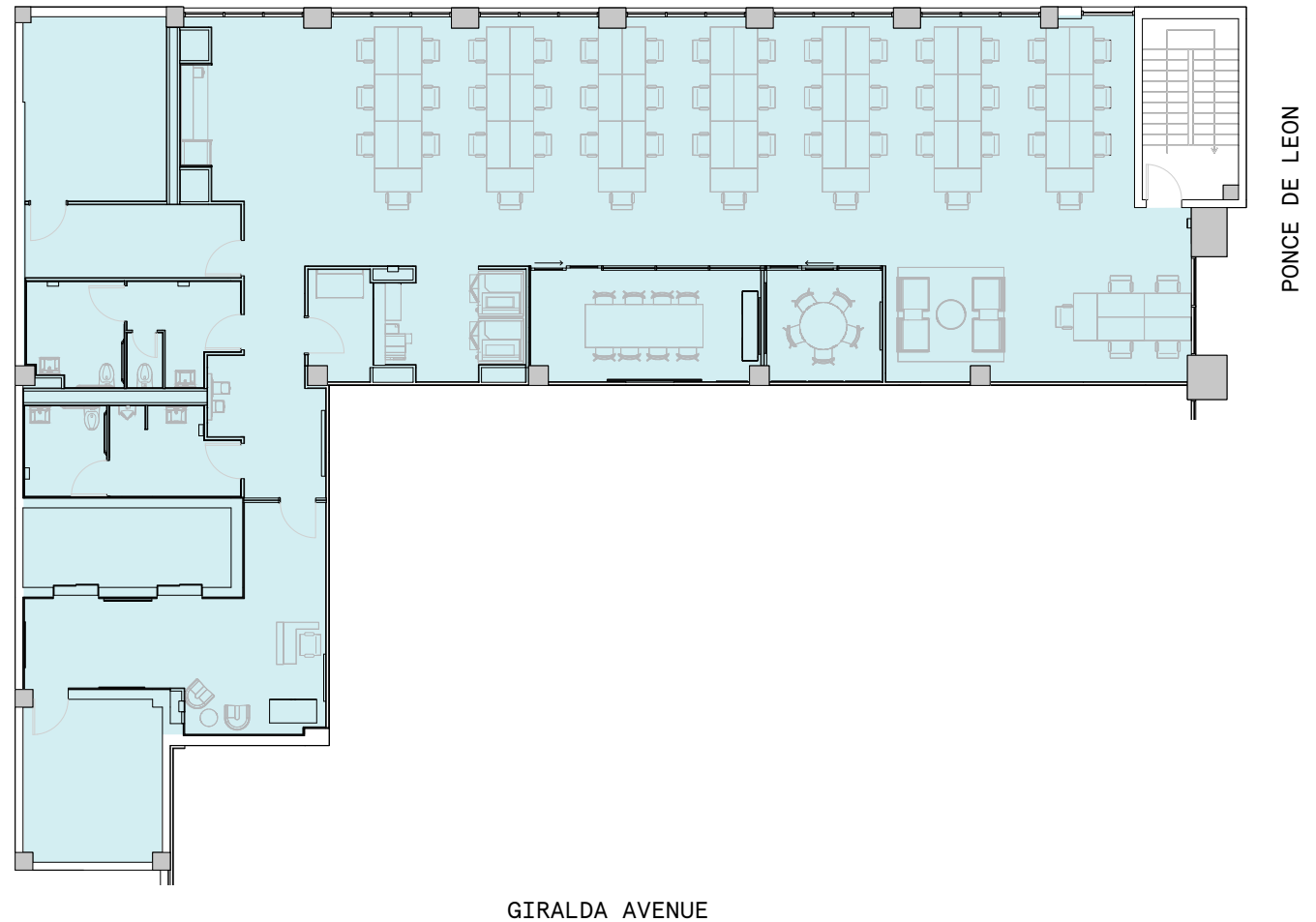
- MEETING ROOM
- SHARED WORKSPACE
- DEDICATED SPACE



2nd Floor

3,791 RSF

3,791 RSF Suite 02W101



3rd Floor

4,953 RSF

2

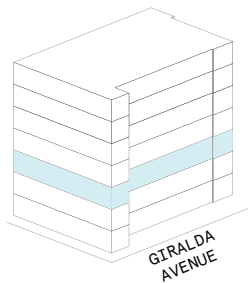
MEETING ROOM(S)

2

SHARED WORKSPACE(S)

LEGEND

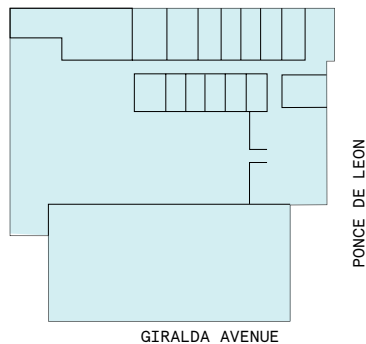
- MEETING ROOM
- SHARED WORKSPACE
- DEDICATED SPACE



3rd Floor

4,953 RSF

4,953 RSF Suite 03-100



4th Floor

6,833 RSF






2

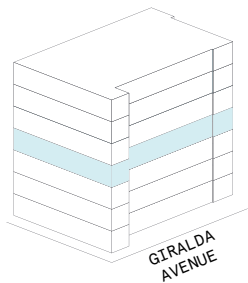
MEETING ROOM(S)

1

SHARED WORKSPACE(S)

LEGEND

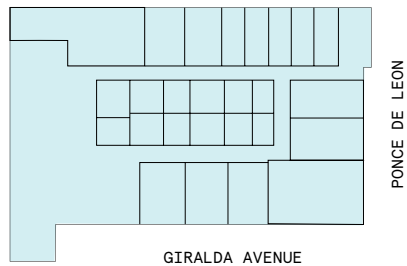
-  MEETING ROOM
-  SHARED WORKSPACE
-  DEDICATED SPACE



4th Floor

6,833 RSF

6,833 RSF Suite 04-100



5th Floor

6,821 RSF






2

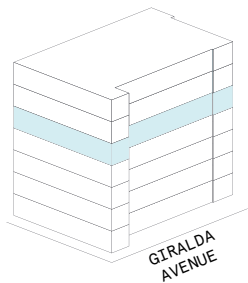
MEETING ROOM(S)

2

SHARED WORKSPACE(S)

LEGEND

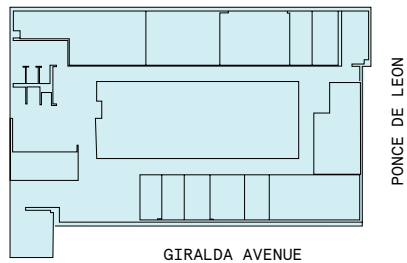
-  MEETING ROOM
-  SHARED WORKSPACE
-  DEDICATED SPACE



5th Floor

6,821 RSF

6,821 RSF Suite 05-100



6th Floor

6,787 RSF






2

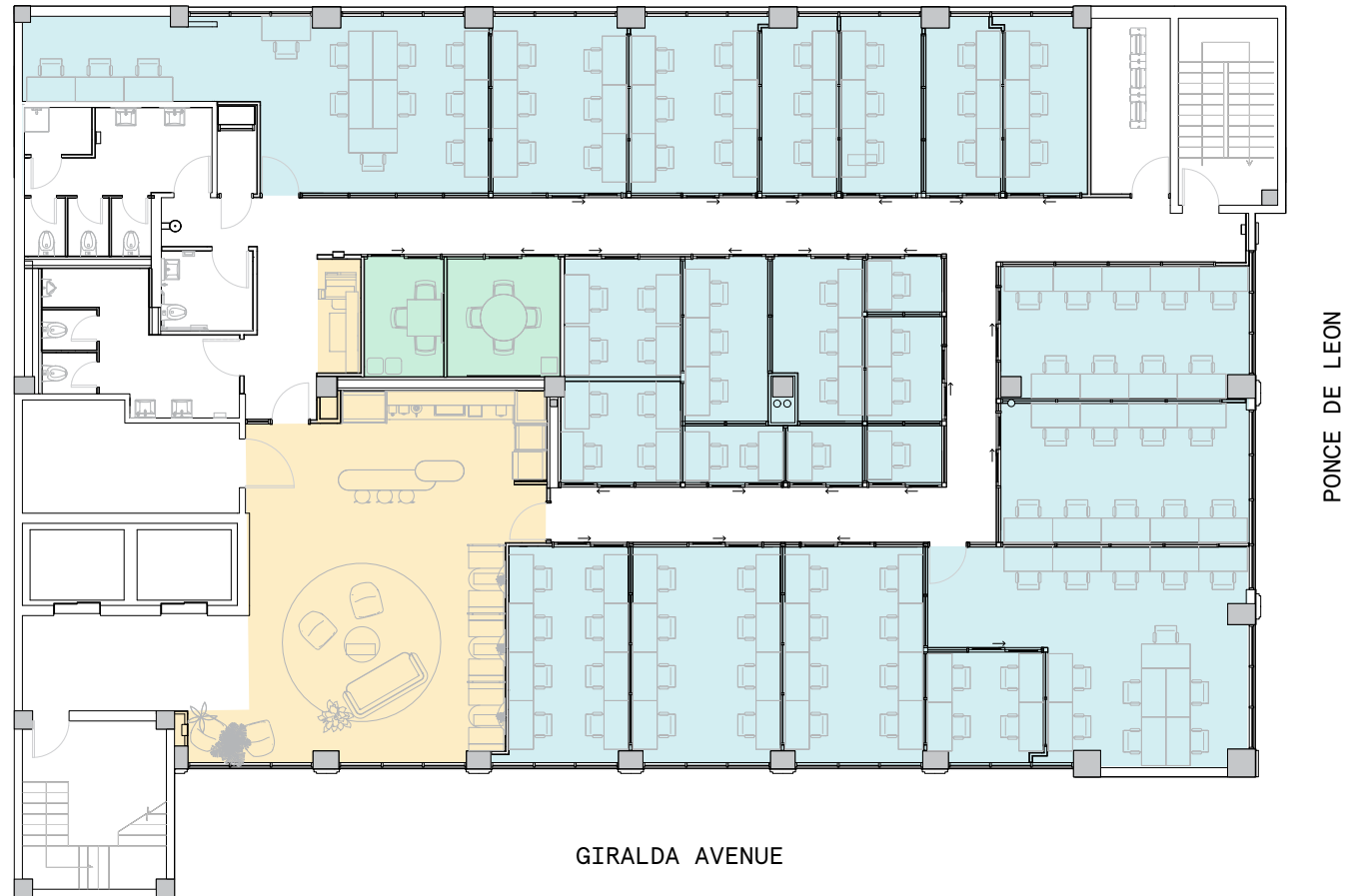
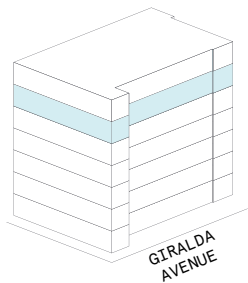
MEETING ROOM(S)

2

SHARED WORKSPACE(S)

LEGEND

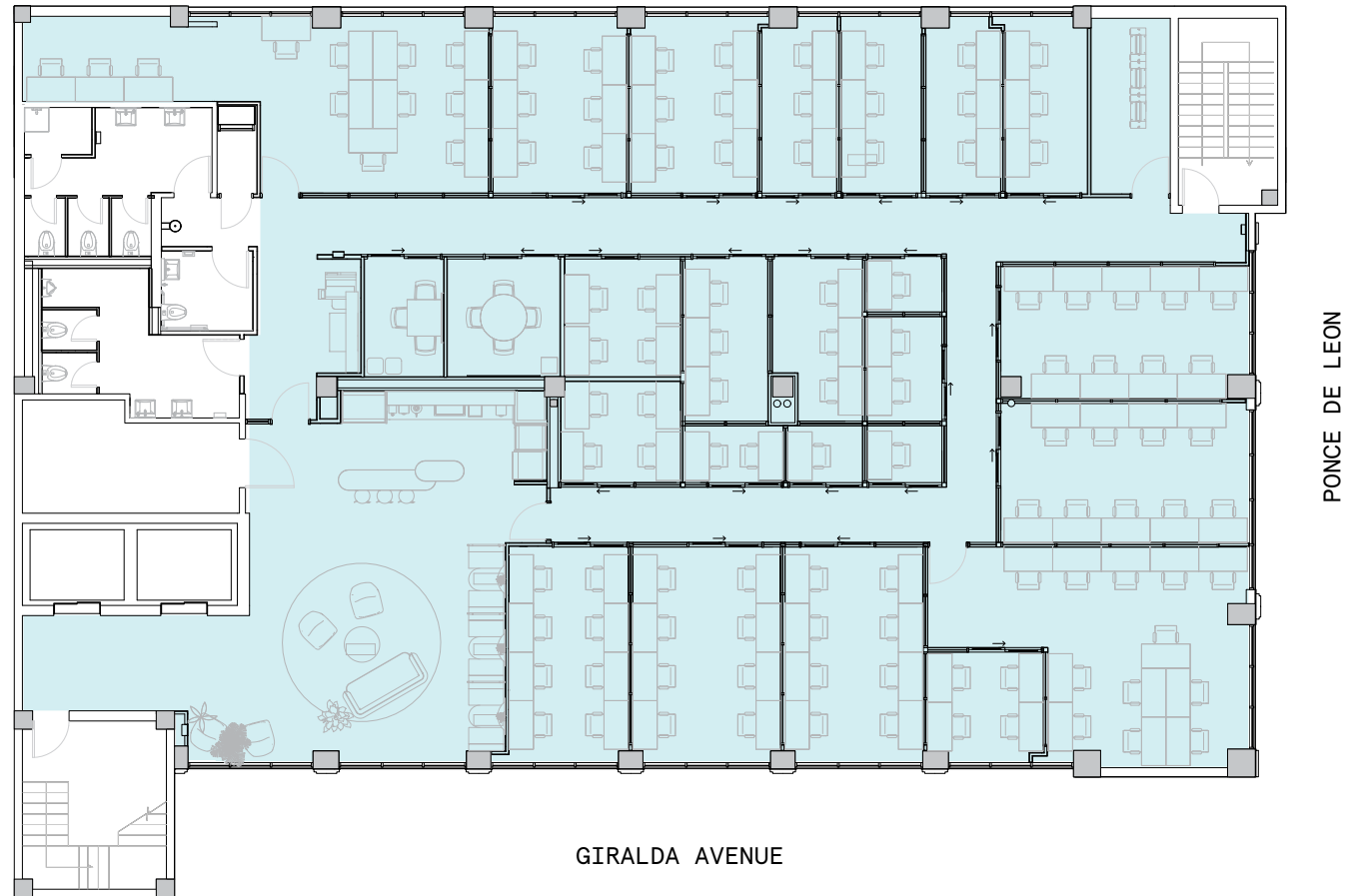
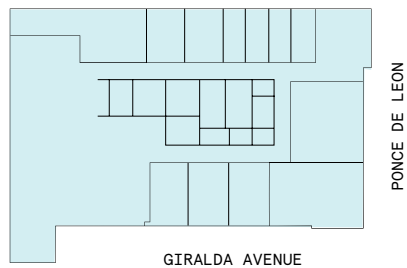
-  MEETING ROOM
-  SHARED WORKSPACE
-  DEDICATED SPACE



6th Floor

6,787 RSF

6,787 RSF Suite 06-100



7th Floor

6,809 RSF






2

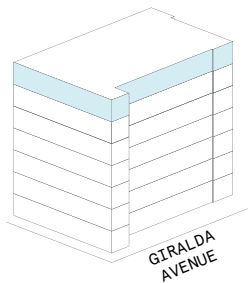
MEETING ROOM(S)

2

SHARED WORKSPACE(S)

LEGEND

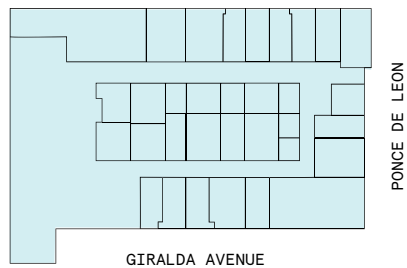
-  MEETING ROOM
-  SHARED WORKSPACE
-  DEDICATED SPACE



7th Floor

6,809 RSF

6,809 RSF Suite 07-100



Contact

For leasing inquiries please
reach out to our team.



Blake Davidson

PORTFOLIO DIRECTOR
BLAKE.DAVIDSON@WEWORK.COM
404.375.6289

Daniella Fano

LEASING DIRECTOR
DANIELLA.FANO@WEWORK.COM
305.699.6125

© 2022 WeWork. The WeWork trademark and related logos are the property of WeWork Companies LLC. Any reference to third-party names are for reference and informational purposes only and should not be considered an endorsement or association of WeWork or vice versa. Photographs contained herein may be representative examples of various WeWork locations and do not necessarily depict the WeWork location referenced. While reasonable efforts have been made to check the accuracy of the information contained here, WeWork, its officers, employees, directors, and representatives, make no warranty, express or implied, regarding the accuracy of the information and disclaim any liability arising from the use of the information contained herein. All dimensions are approximate and subject to variances. It is your obligation to independently verify the particulars of the property. WeWork reserves the right to make changes.