

OFFICE FOR LEASE

199 N 290 W SUITE 125 LINDON, UT 84042



SPECS

- 5,357 SF or TWO Suites: 200: 2,171 & 225: 3,186
- 7/8 offices, Break Room, 4 LARGE open spaces
- Unbelievable views: Lots of Windows
- Lindon: Old Square Station professional offices
- Minutes TO I-15 & State
- Bus stop within walking distance
- Plenty of parking
- Class A finishes
- Tenant Improvements for the right Tenant/Lease

Base Rate: \$22 psf
Triple Net Cost: \$4.25 psf
Includes: HOA Fees,
Water, Sewer, Property
Tax, Insurance, Common
Area Maintenance,
Landscape, Snow Removal

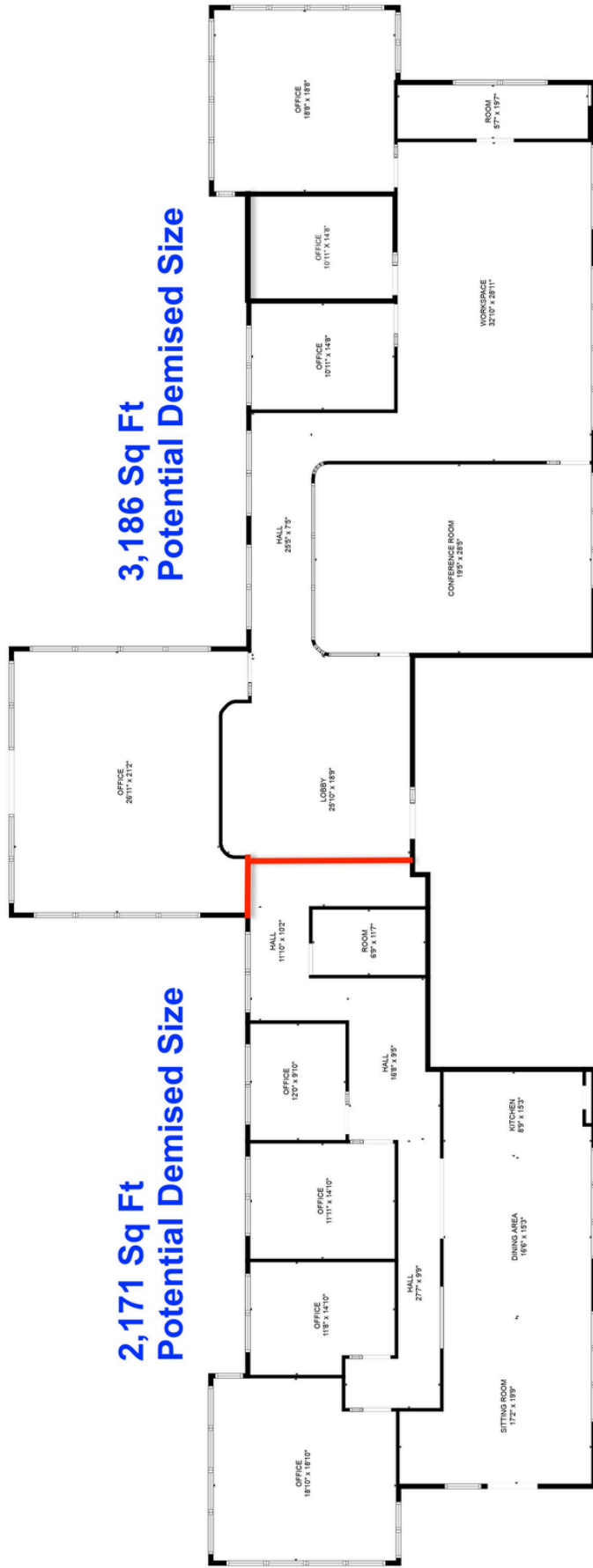
Todd Gubler
todd@toddgubler.com
(801) 494-9911

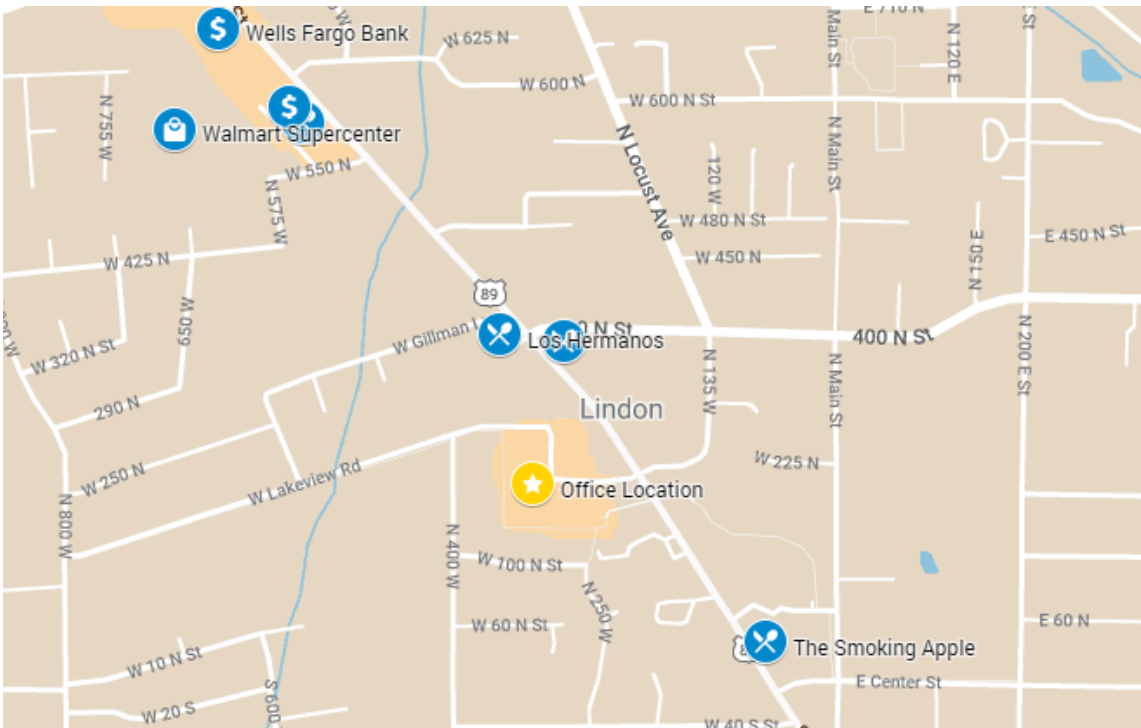
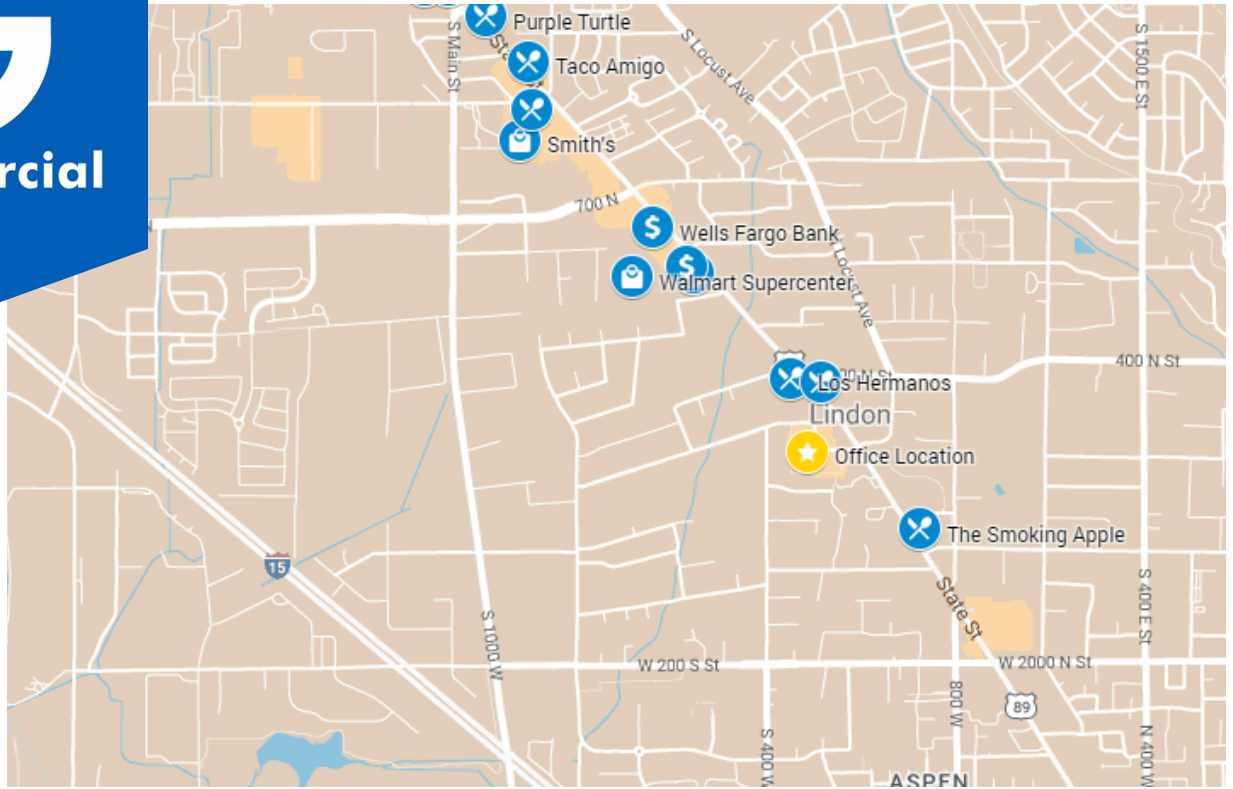
G
Commercial



Todd Gubler
todd@toddgubler.com
(801) 494-9911







Todd Gubler
todd@toddgubler.com
(801) 494-9911

