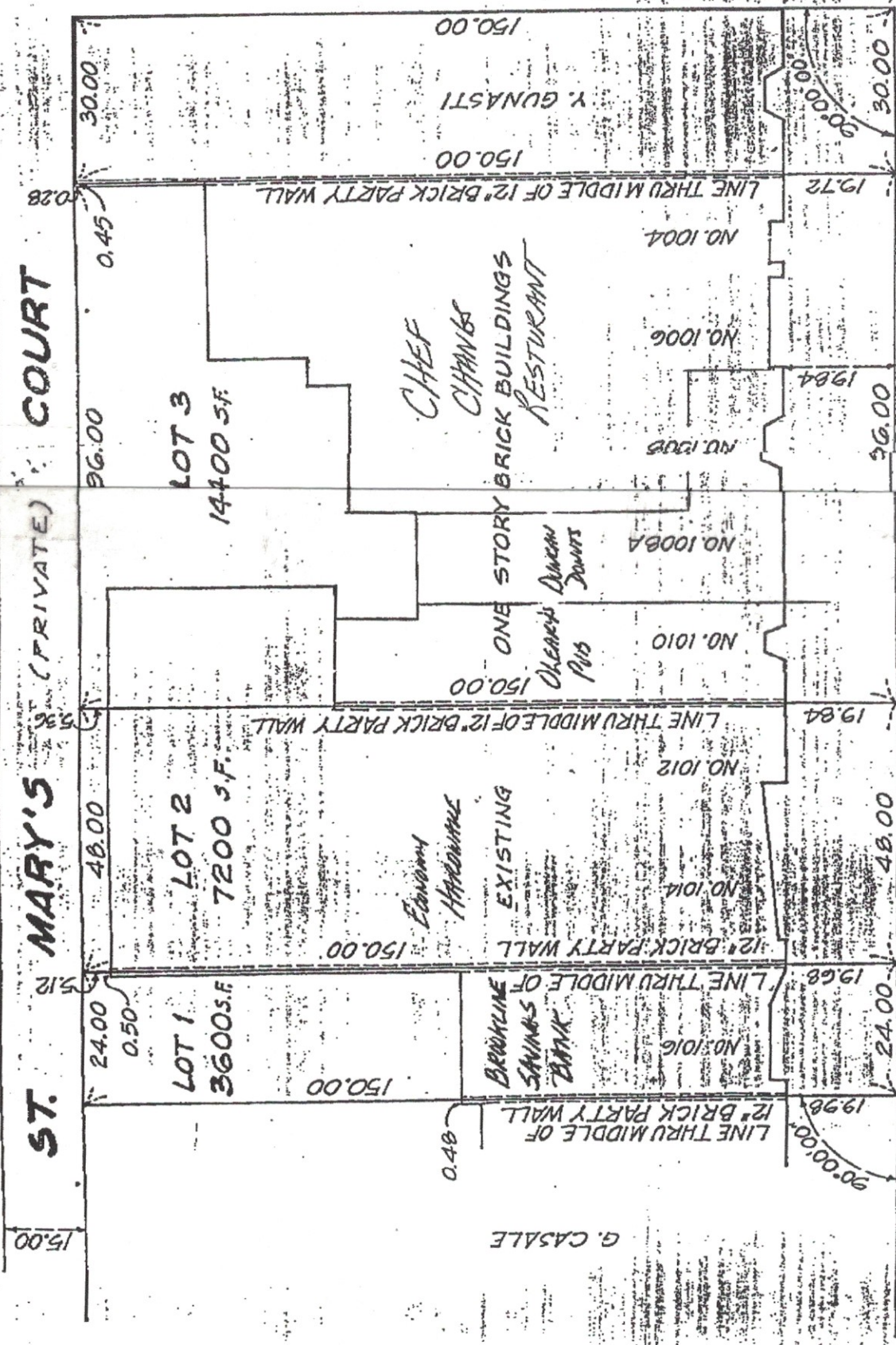


ST. MARY'S (PRIVATE) COURT

ST. MARY'S STREET

BEACON STREET



I HEREBY CERTIFY THAT THE PROPERTY LINES SHOWN HEREON ARE THE LINES DIVIDING EXISTING OWNERSHIP AND THAT THE ALLEYS, STREETS AND WAYS ALREADY