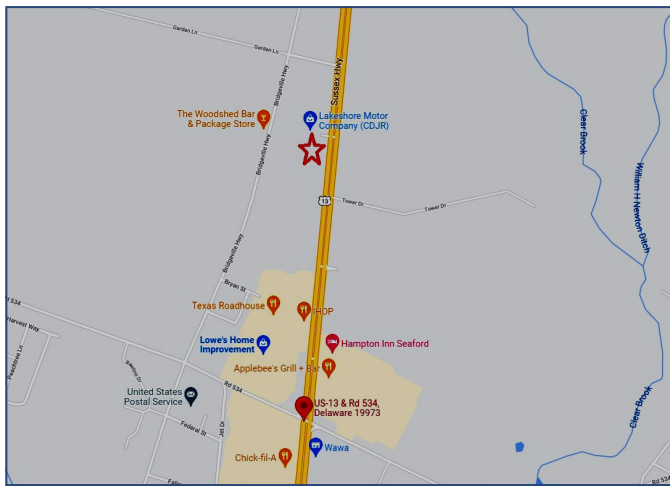


Land for Lease



W. side Rt. 13

Seaford, DE



Property Information

⇒ 5.79+/- Acres

⇒ Located on the west side of Rt. 13 in Seaford

⇒ Tax Parcel: 331-05.00-107.00

⇒ Zoning: C2

⇒ Will Build to Suit with Ground Lease

Demographics	1 Mile	3 Miles	5 Miles
Population	2,017	18,029	26,250
Median Income	\$55,535	\$53,515	\$52,827

For more information contact:

Charles Rodriguez

302-674-3400

ccrod1@aol.com

All information contained herein is believed to be accurate, however was obtained from third parties and R & R Commercial Realty, Inc. does not warrant as to the accuracy submitted, subject to changes or modification without notice. Listing Broker represents the sellers interest.

R&R Commercial Realty

46 South State Street
Dover, Delaware 19901

www.RandRCommercialRealty.com

302-674-3400 (Office)

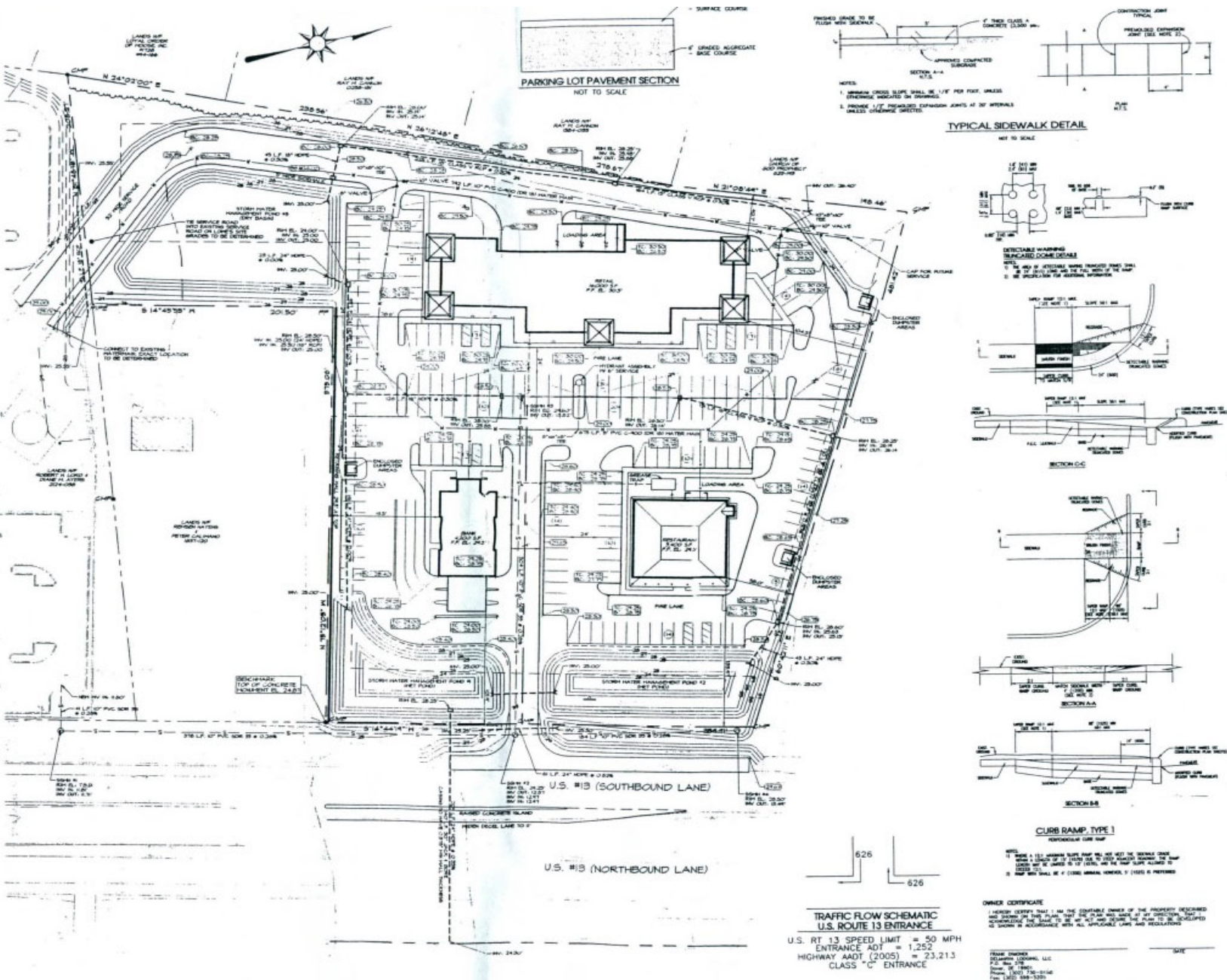
302-674-8479 (Fax)

Proposed Site Plan



Land for Sale: W. Side Rt. 13

Seaford, DE



For more information contact:

Charles Rodriguez

302-674-3400

ccrod1@aol.com

All information contained herein is believed to be accurate, however was obtained from third parties and R & R Commercial Realty, Inc. does not warrant as to the accuracy submitted, subject to changes or modification without notice. Listing Broker represents the sellers interest.

R&R Commercial Realty

46 South State Street
Dover, Delaware 19901

www.RandRCommercialRealty.com

302-674-3400 (Office)

302-674-8479 (Fax)