



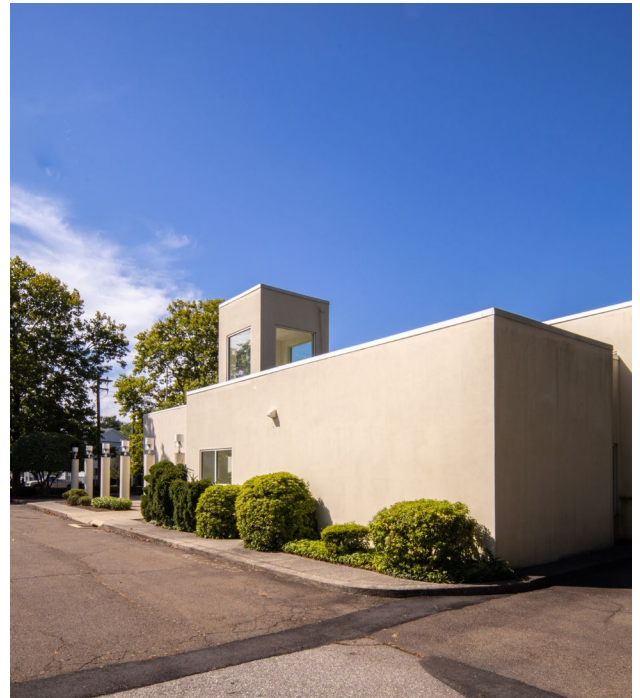
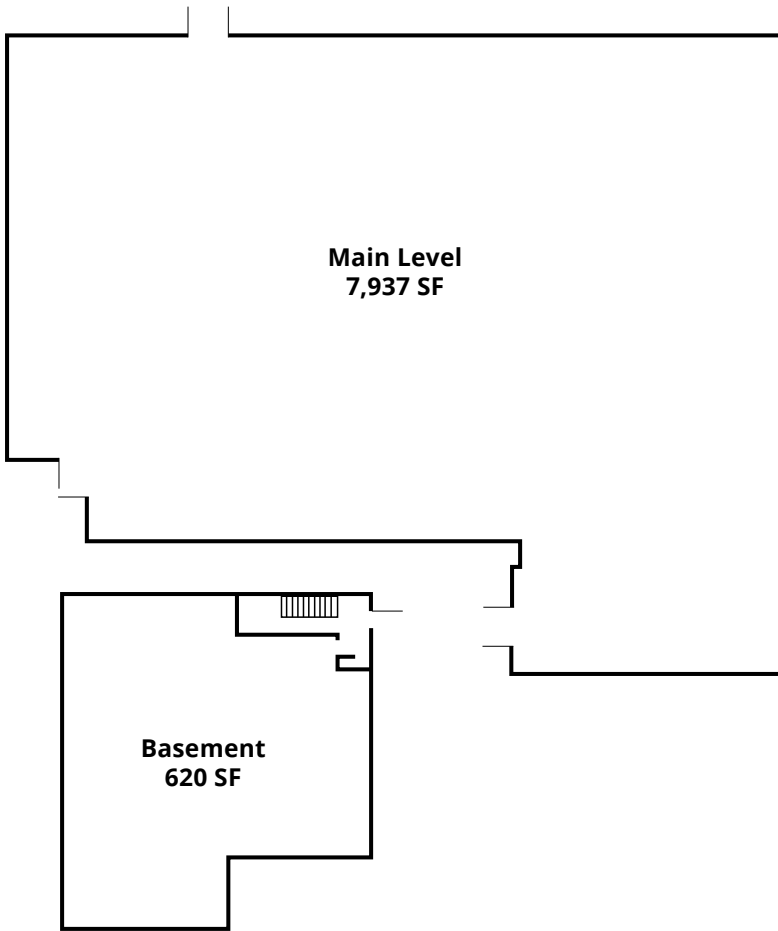
Prime Post Road Location in Westport, CT 8,557 RSF

Property Highlights:

- Free-standing one story building on 1.12 level acres in a GBD zone
- 7,937 SF of space on main level with an additional 620 SF of space in the finished basement
- 250 linear feet of frontage with two curb cuts on the Post Road
- Branding opportunity with prominent street signage
- Large parking area with over 6/1,000 SF parking ratio

Get more information: **Judd McArthur**
Senior Vice President
o 203 614 1719 | m 203 394 3634
judd.mcarthur@avisonyoung.com

Floorplan



Demographics

	1 Mile	2 Miles	5 Miles
2024 Population	5,782	35,405	101,029
2024 Households	2,124	12,768	36,643
Average Household Income	\$208,299	\$203,670	\$177,253

18,600± VPD

Get more information: **Judd McArthur**
D. 203 614 1719 | M. 203 394 3634
judd.mcarthur@avisonyoung.com

**AVISON
YOUNG**

Site plan

Property Details

Total Building Size	8,557 SF
Land	1.12 acres
Zoning	CBD
Real Estate Taxes	\$63,589 (2023)
Year Built	1975
Construction	Stucco Masonry
Stories	One
Tenancy	Single

Utilities

Water Sewer	City City
A/C	Central A/C
Heating	Gas
Power	600 amps 208 Volts



Get more information: **Judd McArthur**
D. 203 614 1719 | M. 203 394 3634
judd.mcarthur@avisonyoung.com





Get more information: **Judd McArthur**
D. 203 614 1719 | M. 203 394 3634
judd.mcarthur@avisonyoung.com



383 Main Ave, 6th Floor | Norwalk, CT | 203 614 1260 | avisonyoung.com

© 2024 Avison Young - New York, LLC. Information contained herein was obtained from sources deemed reliable and, while thought to be correct, have not been verified. Avison Young does not guarantee the accuracy or completeness of the information presented, nor assumes any responsibility or liability for any errors or omissions therein.