

# Office or Art Studio Spaces

FOR LEASE



## 2555 S. Santa Fe Drive, Denver, CO 80223

### PROPERTY INFORMATION

### HIGHLIGHTS

#### Available Spaces:

<b>Suite 205:</b>	285 SF (\$525/month)
<b>Suite 240:</b>	275 SF (\$525/month)
<b>Suite 250:</b>	1,058 SF (\$1,500/month)
<b>Term:</b>	1-3 years

- Rent Includes All Utilities and Common Area Cleaning
- Located in the Enterprise Zone (tax benefits)
- Includes use of Reception Area(s), Kitchen, Restrooms, & Elevator,
- Central Heat & Air Conditioning
- Historic Building with Contemporary Finishes
- 24-Hour Access

## Contact Information



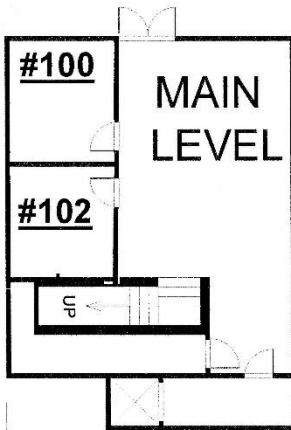
Hal Naiman 720.475.5002  
[hal@theshermanagencyinc.com](mailto:hal@theshermanagencyinc.com)  
 Josh Snyder 720.475.5006  
[josh@theshermanagencyinc.com](mailto:josh@theshermanagencyinc.com)

The Sherman Agency, Inc.  
 910 West 8th Avenue  
 Denver, Colorado 80204  
 Phone: 303.572.8778  
[www.theshermanagency.com](http://www.theshermanagency.com)

# Office or Art Studio Space

## FOR LEASE

2555 S. Santa Fe Drive, Denver, CO 80223



----SOUTH SANTA FE DRIVE----



All information furnished in this presentation regarding this property for lease has been secured from sources we believe to be reliable. However, we accept no responsibility for its correctness and encourage the verification of all numbers prior to making any financial decisions.

### CONTACT INFORMATION

Hal Naiman 720.475.5002

hal@theshermanagencyinc.com

Josh Snyder 720.475.5006

josh@theshermanagencyinc.com

The Sherman Agency, Inc.

910 West 8th Avenue

Denver, Colorado 80204

Phone: 303.572.8778

www.theshermanagency.com

The Sherman Agency, Inc.  
Real Estate Investments / Consulting / Management

