

**\* OUTSTANDING LOCATION \***

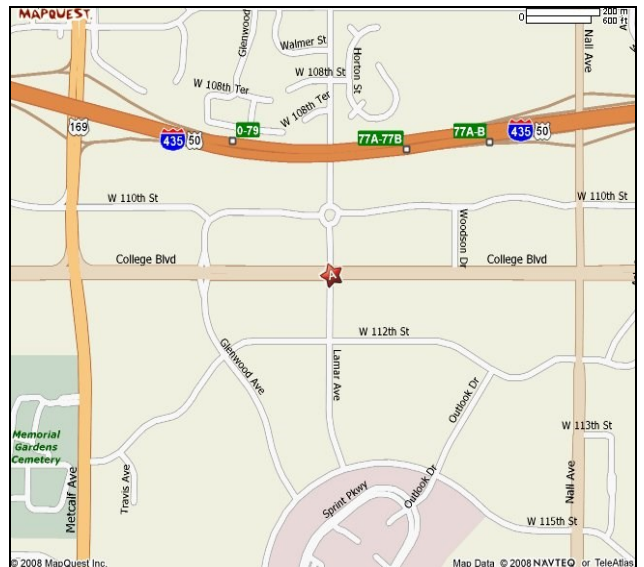
# College Boulevard Business Center

College & Lamar  
Overland Park, Kansas



**View From College & Lamar**

- 4,298 SF Flex Space with two Dock Doors
- 3,117 SF High End Office
- Easy Access to I-435 and Metcalf/Nall
- **\$11 SF**, plus NNN's of **\$6 SF**



## **RUBENSTEIN REAL ESTATE CO., LC**

4400 Shawnee Mission Pkwy, Suite 209  
Fairway, KS 66205  
Phone 913-362-1999 | Fax 913-362-1969  
[www.rubensteinre.com](http://www.rubensteinre.com)

**Dwight Medbery, III**

[dmed@rubensteinre.com](mailto:dmed@rubensteinre.com)

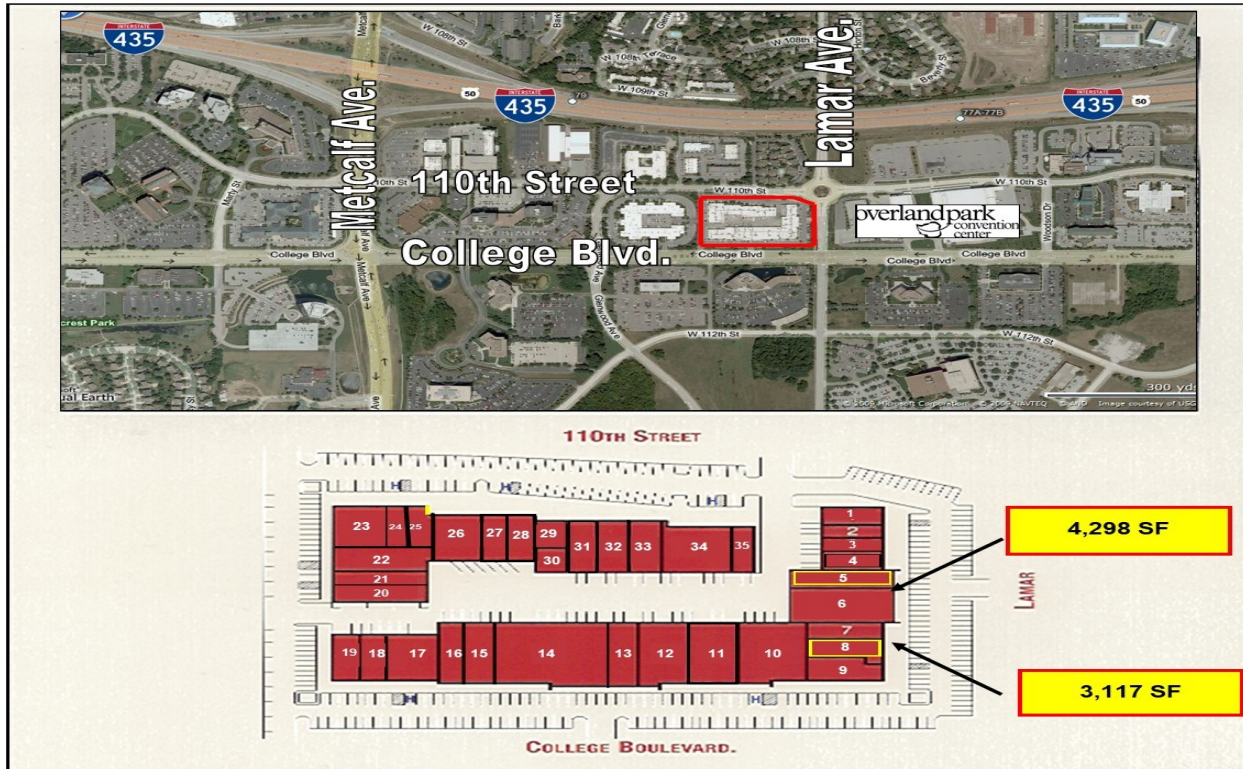
**Cullen Magariel**

[Cullen@rubensteinre.com](mailto:Cullen@rubensteinre.com)

All information furnished regarding property for lease is from sources deemed reliable, but no warranty or representation is made as to the accuracy thereof and the same is submitted subject to errors, omissions, changes of prices, rental or other conditions, prior lease or withdraw without notice.

# College Boulevard Business Center

College & Lamar  
Overland Park, Kansas



## RUBENSTEIN REAL ESTATE CO., LC

4400 Shawnee Mission Pkwy, Suite 209  
Fairway, KS 66205  
Phone 913-362-1999 | Fax 913-362-1969  
www.rubensteinre.com

Dwight Medbery, III

[dmed@rubensteinre.com](mailto:dmed@rubensteinre.com)

Cullen Magariel

[Cullen@rubensteinre.com](mailto:Cullen@rubensteinre.com)

# College Boulevard Business Center

College & Lamar  
Overland Park, Kansas



**RUBENSTEIN REAL ESTATE CO., LC**

4400 Shawnee Mission Pkwy, Suite 209

Fairway, KS 66205

Phone 913-362-1999 | Fax 913-362-1969

[www.rubensteinre.com](http://www.rubensteinre.com)

**Dwight Medbery, III**

[dmed@rubensteinre.com](mailto:dmed@rubensteinre.com)

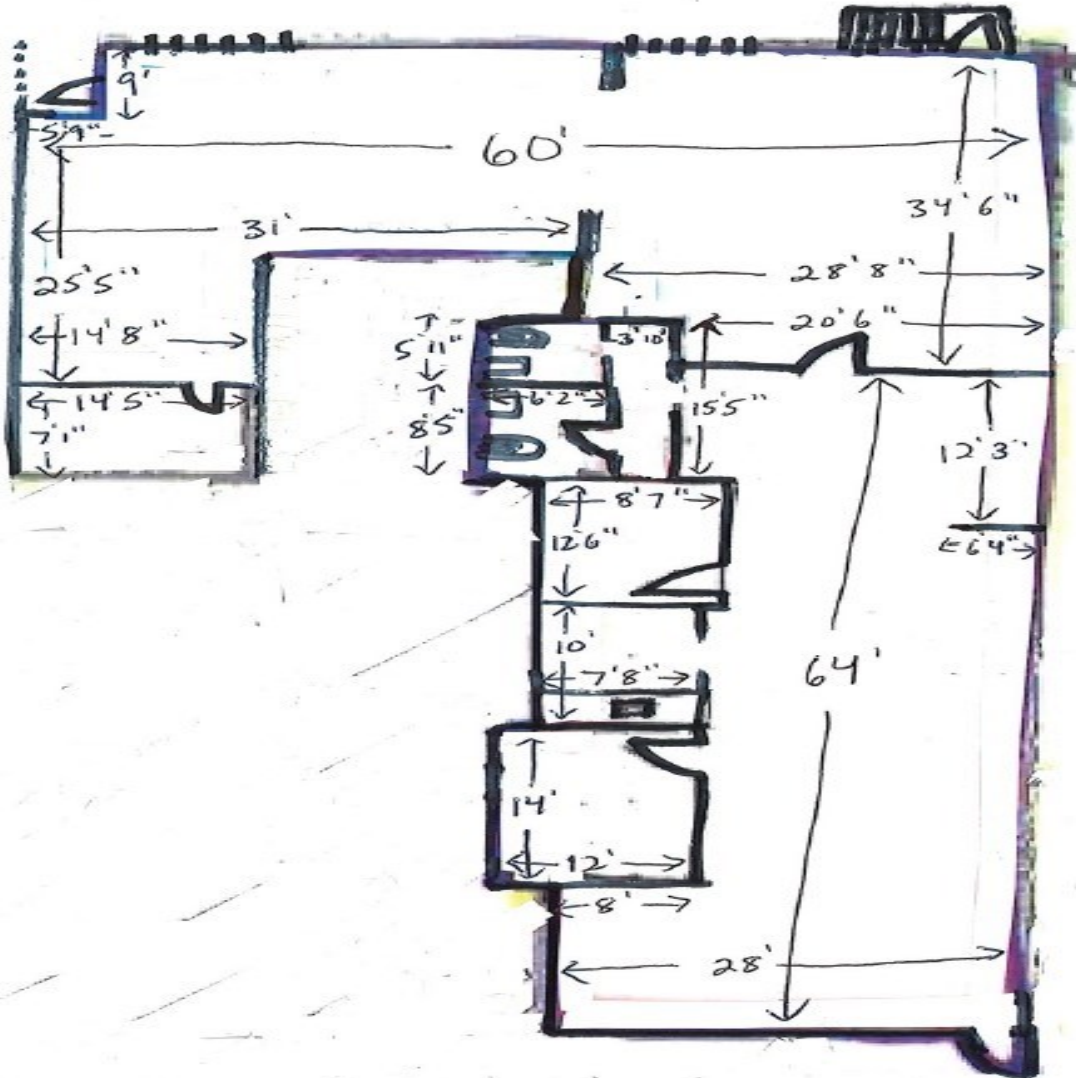
**Cullen Magariel**

[Cullen@rubensteinre.com](mailto:Cullen@rubensteinre.com)

# College Boulevard Business Center

College & Lamar  
Overland Park, Kansas

6316 COLLEGE - 4,298 SF



**RUBENSTEIN REAL ESTATE CO., LC**

4400 Shawnee Mission Pkwy, Suite 209

Fairway, KS 66205

Phone 913-362-1999 | Fax 913-362-1969

[www.rubensteinre.com](http://www.rubensteinre.com)

**Dwight Medbery, III**

[dmed@rubensteinre.com](mailto:dmed@rubensteinre.com)

**Cullen Magariel**

[Cullen@rubensteinre.com](mailto:Cullen@rubensteinre.com)