

TWENTY MILE STATION

18801 E. MAINSTREET | PARKER, CO

★ ★ ★
C L A S S A

OFFICE / MEDICAL SPACE
FOR LEASE

**BUILDING UPDATES
COMING SOON**



\$19.00/SF NNN

Twenty Mile Station is a premier, high-end medical and office building in the heart of Parker. Chipotle, Bread & Butters, and many other retailers are in the same development and numerous others are within walking distance. It is adjacent to the new Ascent on Main Hotel and upscale restaurants.

TWENTY MILE STATION III PROVIDES



CENTRAL PARKER LOCATION
NEAR DOWNTOWN



BUILDING & MONUMENT
SIGNAGE AVAILABLE



HIGH IMAGE &
EXCELLENT VISIBILITY



WALKABLE RESTAURANTS
& AMENITIES



24/7 VIDEO SURVEILLANCE
WITH SECURE
BUILDING ACCESS



EXCELLENT ACCESS FROM
ANYWHERE IN PARKER



JEREMY REEVES
+1 303 283 1375
JEREMY.REEVES@COLLIERS.COM



TWENTY MILE STATION

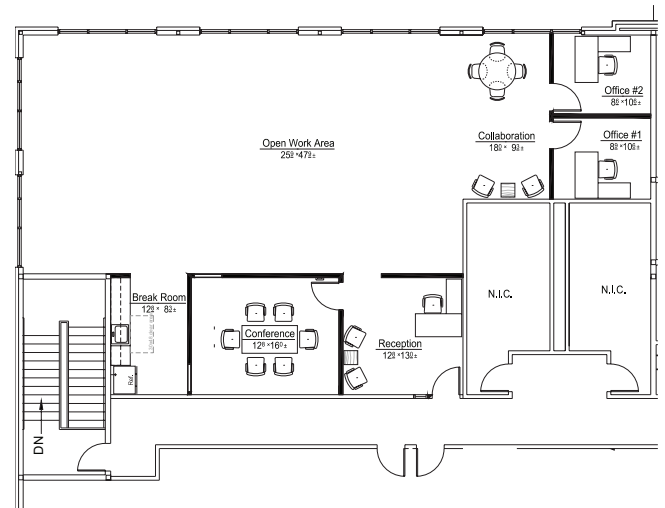
18801 E. MAINSTREET | PARKER, CO



CONCEPTUAL UPDATED BUILDING LOBBY

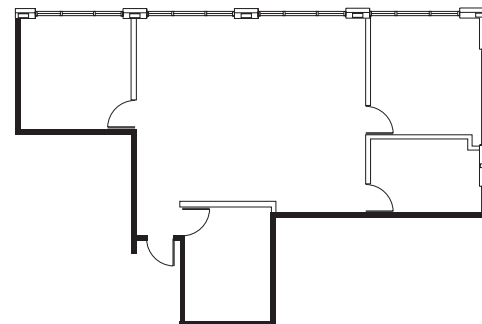
SUITE 200 | 2,628 SF

- CORNER OFFICE WITH ABUNDANT NATURAL LIGHT
- MEDICAL OR OFFICE USERS WANTED



SUITE 260 | 1,365 RSF

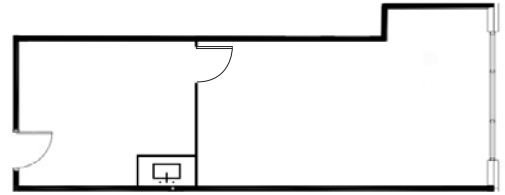
- CORNER OFFICE WITH ABUNDANT NATURAL LIGHT
- MEDICAL OR OFFICE USERS WANTED





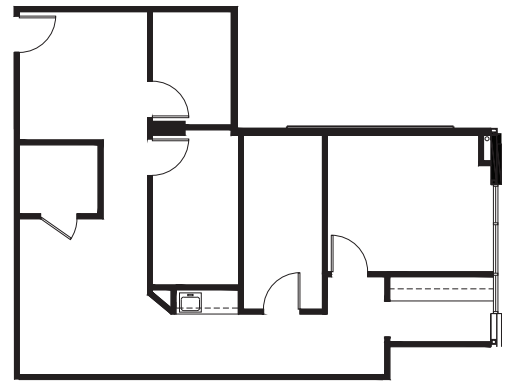
SUITE 285 | 627 RSF

- RECEPTION AND ONE OFFICE WITH WINDOWS AND WET BAR
- MEDICAL OR OFFICE USERS WANTED



SUITE 290 | 1,149 SF

- SECOND GENERATION MEDICAL BUILDOUT



TWENTY MILE

STATION

18801 E. MAINSTREET | PARKER, CO



Colliers

4643 South Ulster Street | Suite 1000 | Denver, CO 80237
+1 303 745 5800 fax +1 303 745 5888 | colliers.com/denver

No warranty or representation is made as to the accuracy of the foregoing information. Terms of sale or lease and availability are subject to change or withdrawal without notice.