

FOR LEASE

Quail Lakes Business Park

4623 Quail Lakes Drive

STOCKTON, CALIFORNIA

±2,533 SF OFFICE SUITE
Lease Rate: Call for pricing
Just Renovated



FOR MORE INFORMATION
CONTACT:

PARTNERS
COMMERCIAL

Suzanne Grande
209.483-8999
Lic. 01080467
Suzanne@partnersreinc.com

FOR LEASE

Quail Lakes Business Park

4623 Quail Lakes Drive

STOCKTON, CALIFORNIA

±2,533 SF OFFICE SUITE
Lease Rate: Call for pricing
Just Renovated

PROPERTY FEATURES:

±2,533 SF Office Suite

- 4 (4) Private Offices
- 2 Interior ADA Restroom
- Break Area
- Bull Pen
- Conference Room

• **Space:** The building's layout is conducive to various professional uses, making it ideal for medical, corporate, or specialized professional use.

• **Amenities:** Features include updated HVAC systems, ample parking, and solar panels.

• **Prime Location:** Located in the heart of Stockton's Quail Lakes Business Park *information found in this*
All information be verified prior to a transaction.
marketing package have been gathered from
resources believed to be reliable. Brokers and Agents do not warrant.

FOR MORE INFORMATION
CONTACT:



Suzanne Grande
209.483-8999
Lic. 01080467
Suzanne@partnersreinc.com

FOR LEASE

Quail Lakes Business Park

4623 Quail Lakes Drive

STOCKTON, CALIFORNIA

± 2,533 SF

OFFICE SUITE

Lease Rate: Call for pricing
Just Renovated



FOR MORE INFORMATION
CONTACT:

PARTNERS
COMMERCIAL

Suzanne Grande
209.483-8999
Lic. 01080467
Suzanne@partnersreinc.com

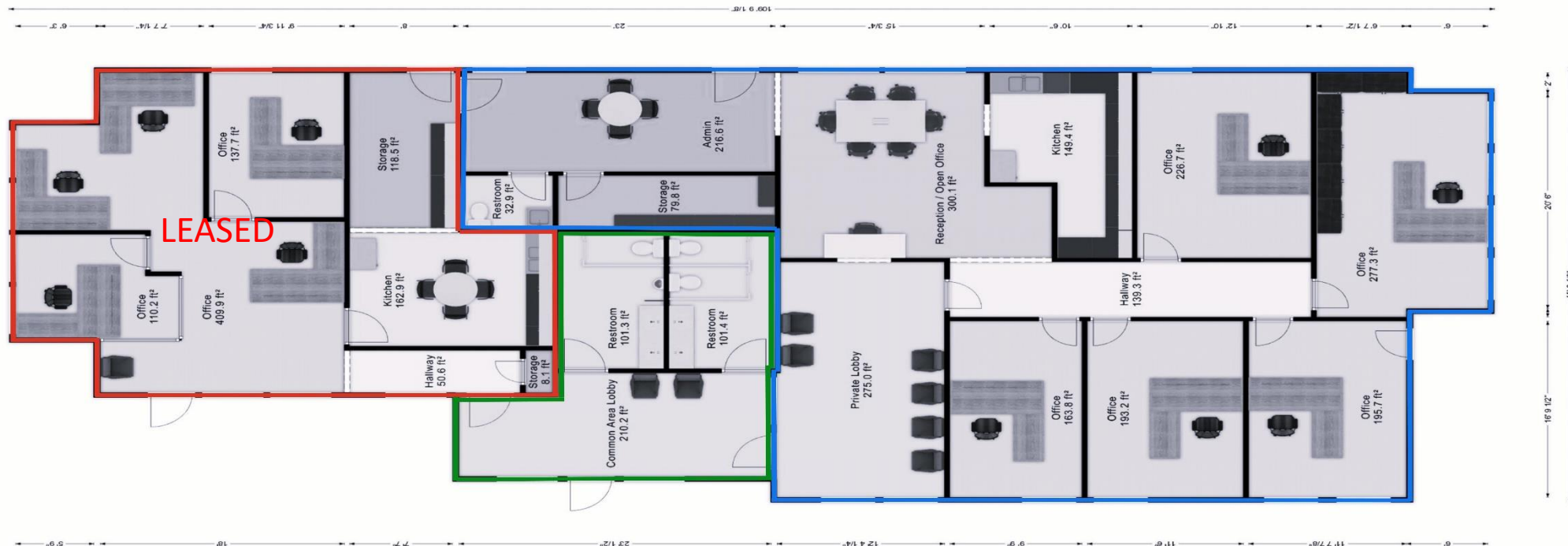
FOR LEASE

Quail Lakes Business Park

4623 Quail Lakes Drive

STOCKTON, CALIFORNIA

± 2,533 SF
OFFICE SUITE
Lease Rate: Call for pricing
Just Renovated



Note: The area outlined in red is leased.

FOR MORE INFORMATION
CONTACT:

PARTNERS
COMMERCIAL

Suzanne Grande
209.483-8999
Lic. 01080467
Suzanne@partnersreinc.com

FOR LEASE

Quail Lakes Business Park

4623 Quail Lakes Drive

STOCKTON, CALIFORNIA

±2,533 OFFICE SUITE
Lease Rate: Call for pricing
Just Remodeled



FOR MORE INFORMATION
CONTACT:

PARTNERS
COMMERCIAL

Suzanne Grande
209.483-8999
Lic. 01080467
Suzanne@partnersreinc.com