

**502-503 SHEPPARD ROAD**  
VOORHEES, NJ 08043

**UPGRADED  
MEDICAL CONDO**



## AVAILABLE FOR SALE

**EXCLUSIVELY  
REPRESENTED BY  
THE FLYNN COMPANY**

**CINDY WEINER**  
CWEINER@FLYNNCO.COM  
215-561-6565 X 129

**The  
Flynn  
Company**

### PROPERTY DETAILS:



2,476 SF (each suite 1,238 SF)



Minutes away from Routes 70 and 73, as well as I-295, the New Jersey Turnpike, and PA Bridges



Individualized outside entrance to suite



Well suited for a variety of medical uses



Ample on-site parking available



Close proximity to Cooper University Healthcare, Jefferson Health, and Virtua Health



Seller will consider a sale and leaseback

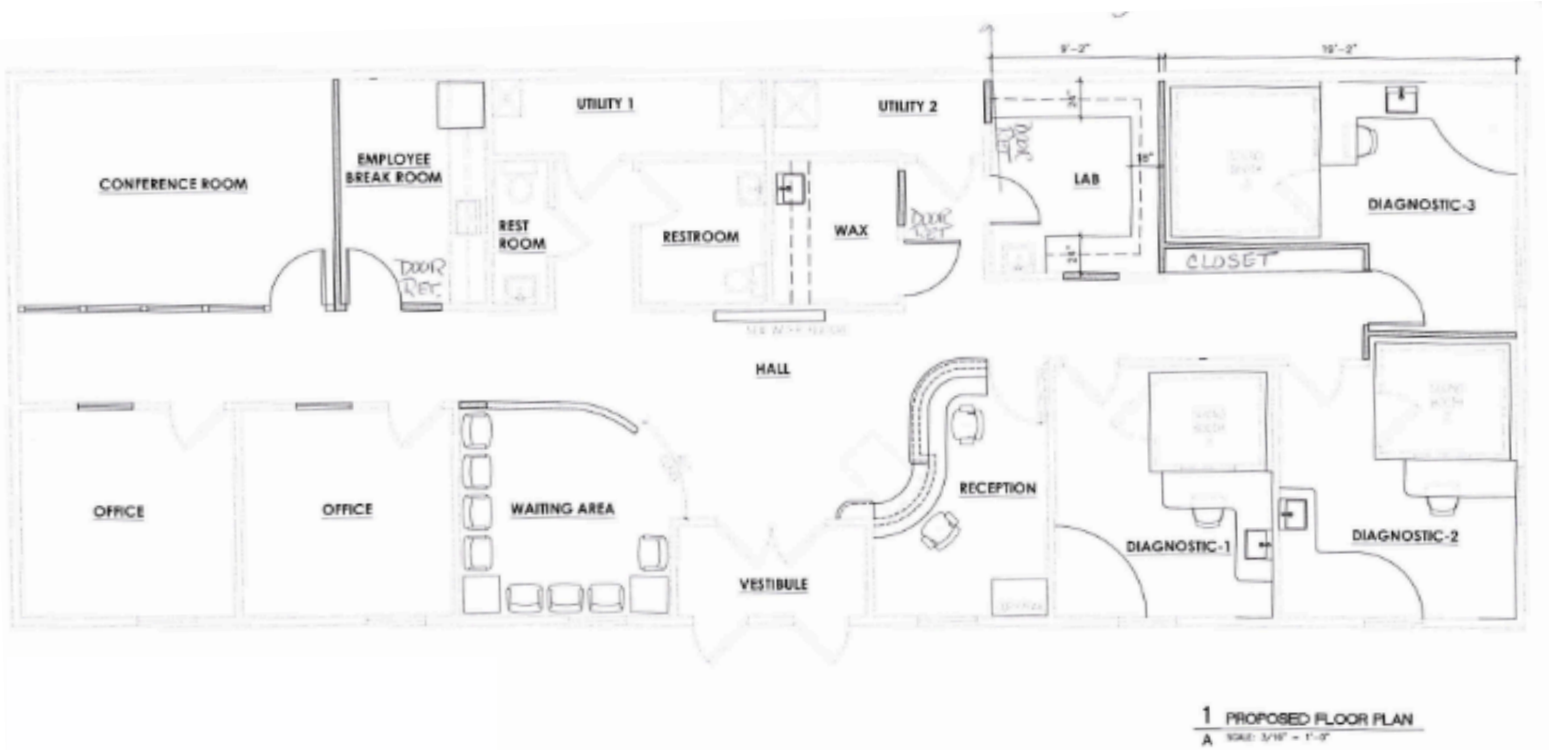
**THE FLYNN COMPANY**

WWW.FLYNNCO.COM | 1621 WOOD STREET, PHILADELPHIA, PA 19103 | 215.561.6565



### PROPERTY PHOTOS

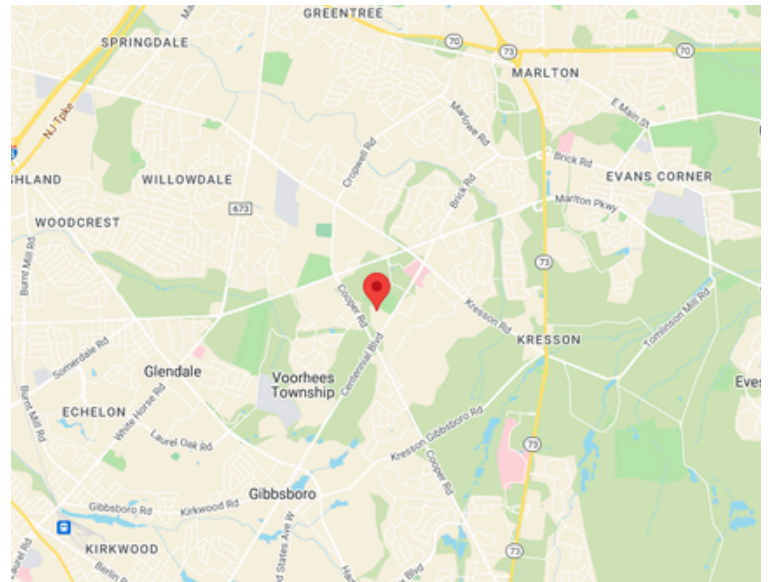


## FLOOR PLAN



## LOCATION

	2 mile	5 mile	10 mile
 Population	29,245	196,928	711,533
 Households	10,661	75,628	270,667
 Median Household Income	\$136,812	\$97,804	\$88,888



**For More Information  
Please Contact:**

**CINDY WEINER**  
CWEINER@FLYNNCO.COM  
215-561-6565 X 129