



Congress Parkway

Athens, TN 37303 | McMinn County

Property Description

- Parcel (1): 0056-152.00 | 6.96 Acres
- Parcel (2): 0056-153.00 | 7.82 Acres
- Parcel (3): 0056-154.00 | 11.43 Acres
- Total Acres: 26.21±

Comments

Located behind Lowes off Congress Parkway in Athens, TN. There is a 50' easement along Congress Parkway to the site. This site can also be accessed via West Street.

SALE PRICE: \$899,000



ZONING	R3
TRAFFIC COUNT	16,938/VPD on Congress Pkwy
EASEMENT	50' to Congress Pkwy

FOR MORE INFORMATION:

Jeff Jennings, CCIM

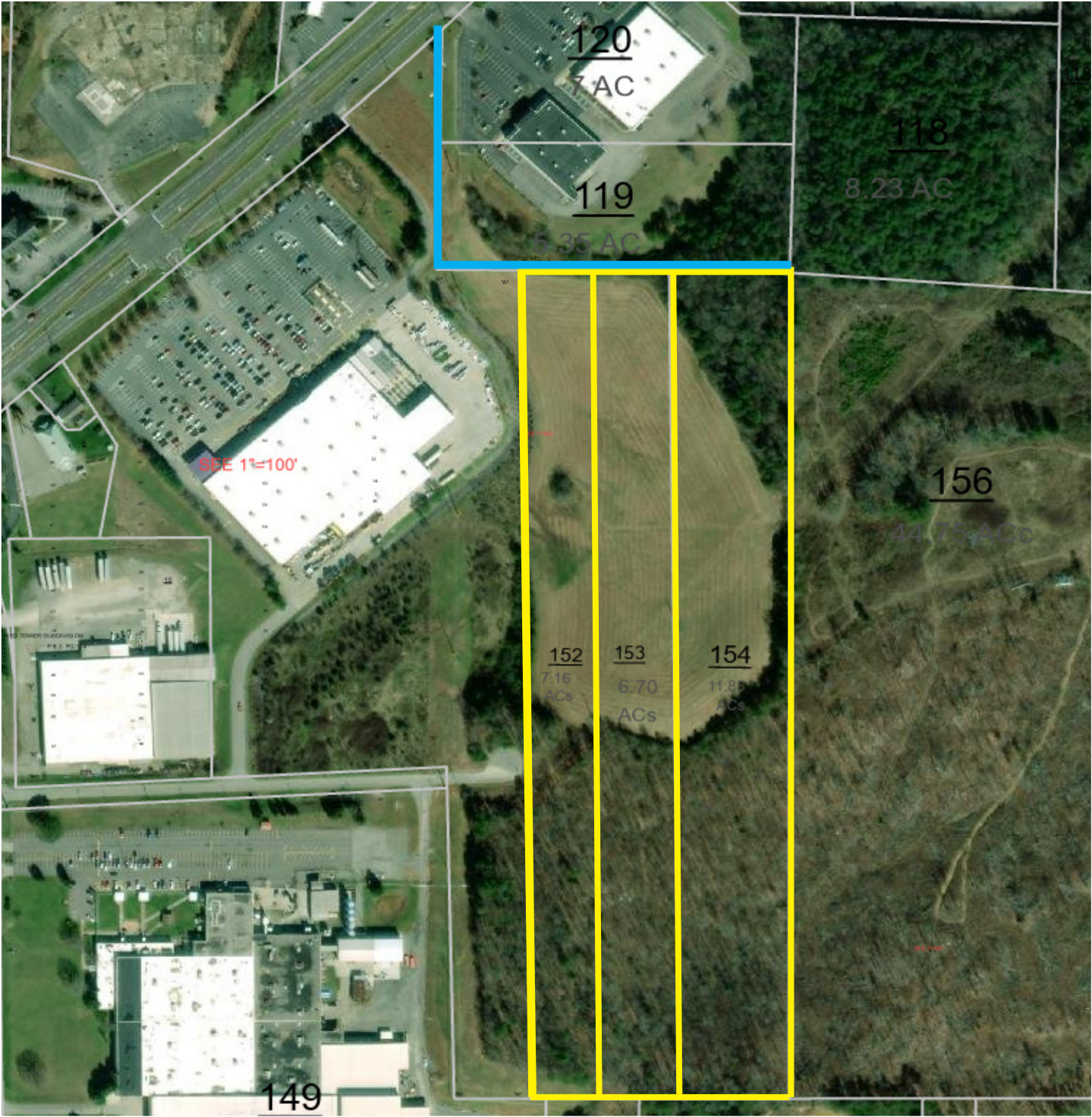
+1 423 255 8555 • jbj@charterre.com

TAX PARCEL

Congress Parkway | Athens, TN

MAP KEY

- 50' Easement to Congress Pkwy
- Property Parcels



Above the 500 year flood per City of Athens/FEMA

AERIAL MAP

Congress Parkway | Athens, TN



DEMOGRAPHICS 1,3,5 MILES

Congress Parkway | Athens, TN

1 Mile



3 Mile



5 Mile

