



PALOMA
REALTY PARTNERS



©2020 PALOMA REALTY PARTNERS

SUBLEASE OPPORTUNITY
909-913 OCEAN FRONT WALK VENICE

Paloma Realty Partners is pleased to present the opportunity to lease this creative office space, previously occupied by Snap Inc., located right on the Venice Beach Boardwalk with direct access to Venice Beach. Surrounded by dining and shopping amenities along Ocean Front Walk and Abbot Kinney, this property is surrounded by a dynamic community of creative office tenants in the tech, media and e-commerce industries.

SHOWING AVAILABLE UPON REQUEST.

ADDRESS: 909-913 Ocean Front Walk, Venice

SIZE: 27,344 SF

RENTAL RATE: Call for details

LEASE TERM: Through February 2025

AVAILABILITY: Immediately

PARKING: 75 spaces at prevailing market rate

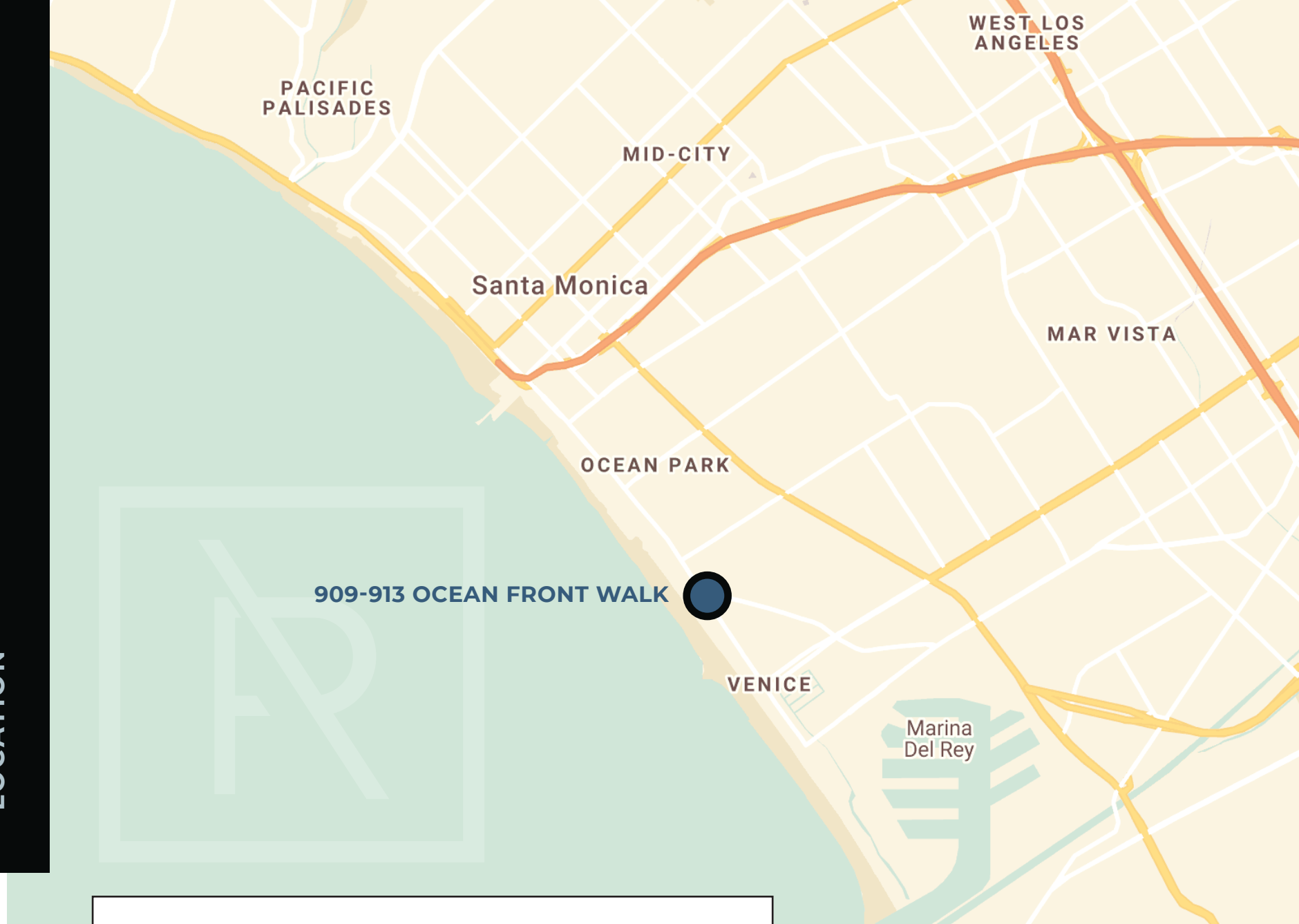
WALKSCORE: 95

BIKEScore: 96

OVERVIEW



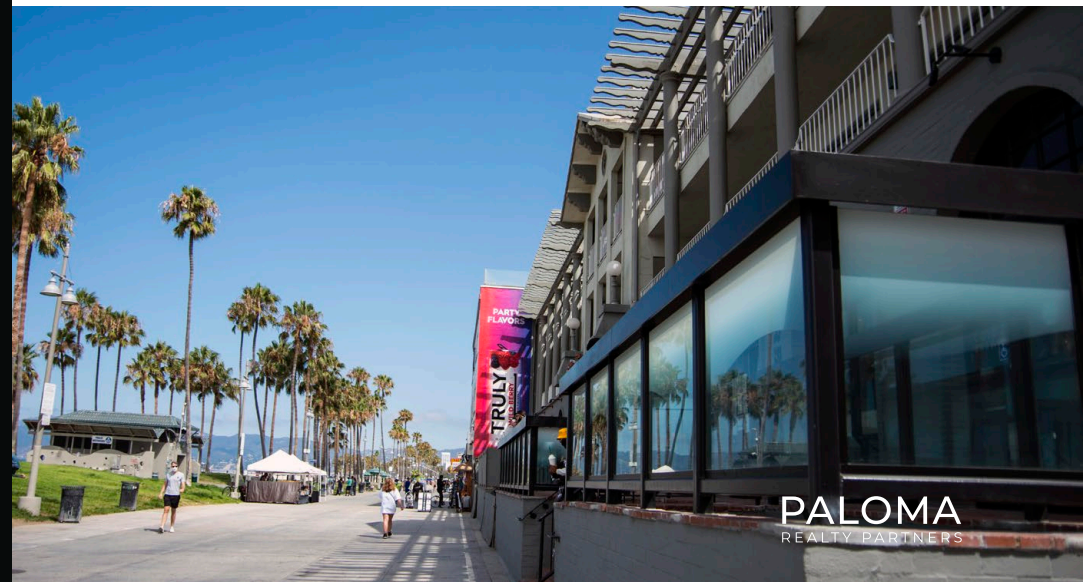
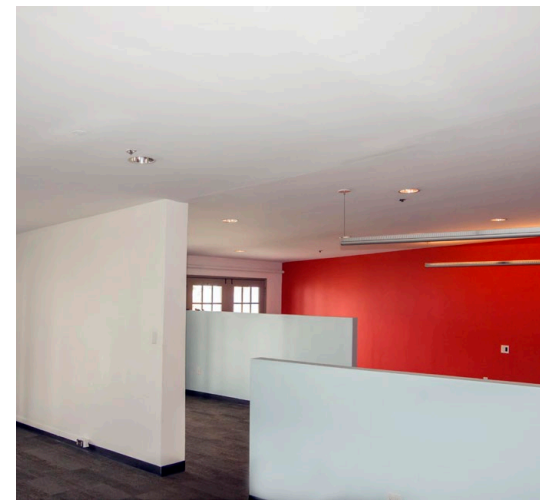
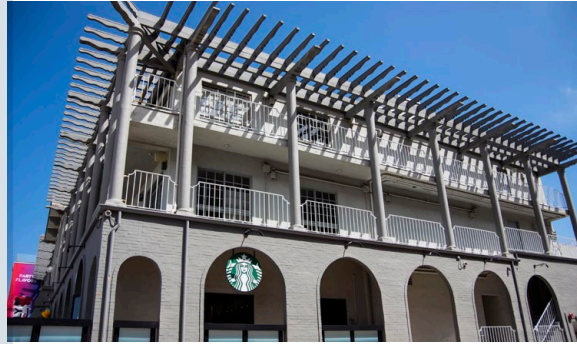
LOCATION



[CLICK HERE FOR GOOGLE MAP VIEW](#)

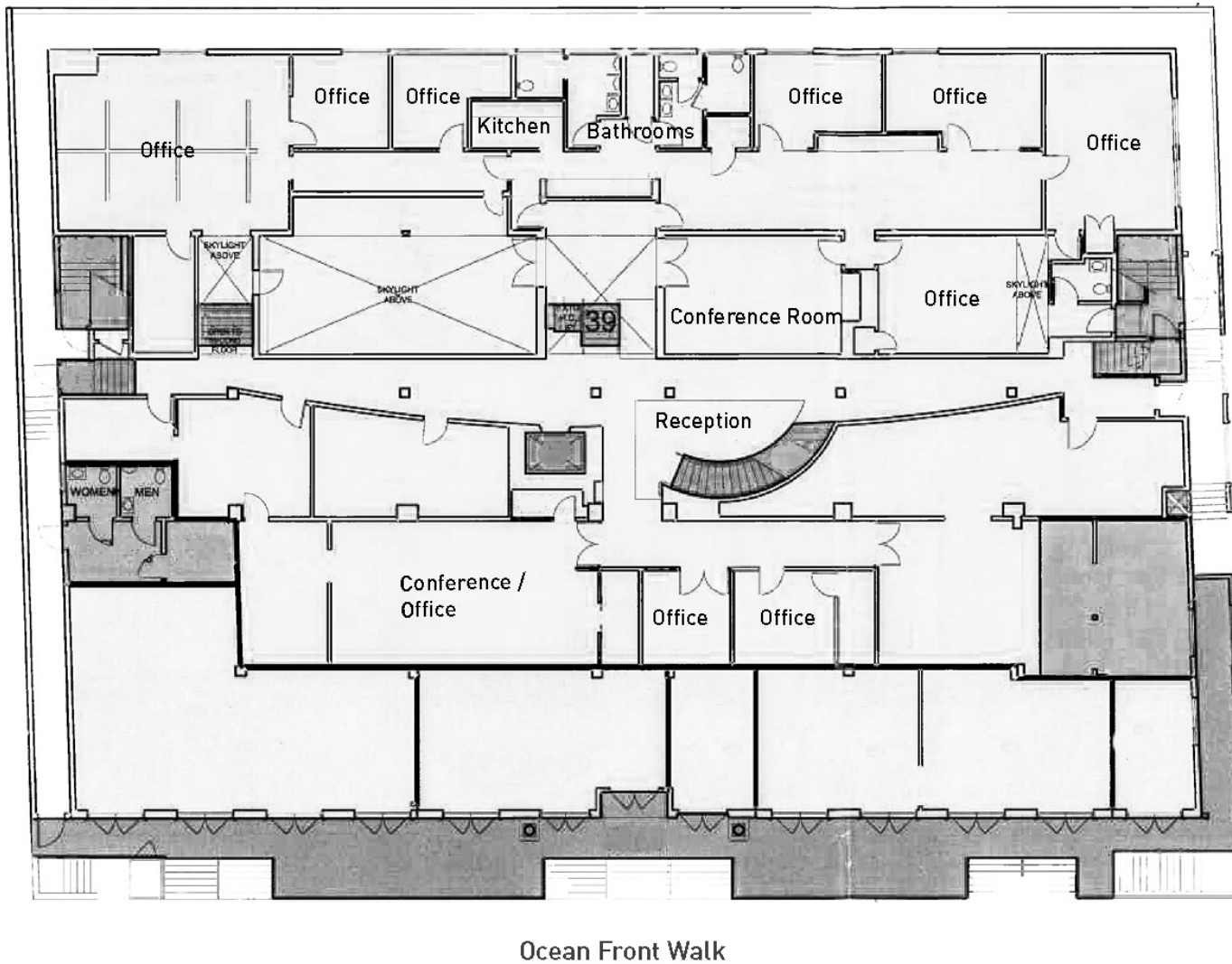


909-913 OCEAN FRONT WALK



PALOMA
REALTY PARTNERS

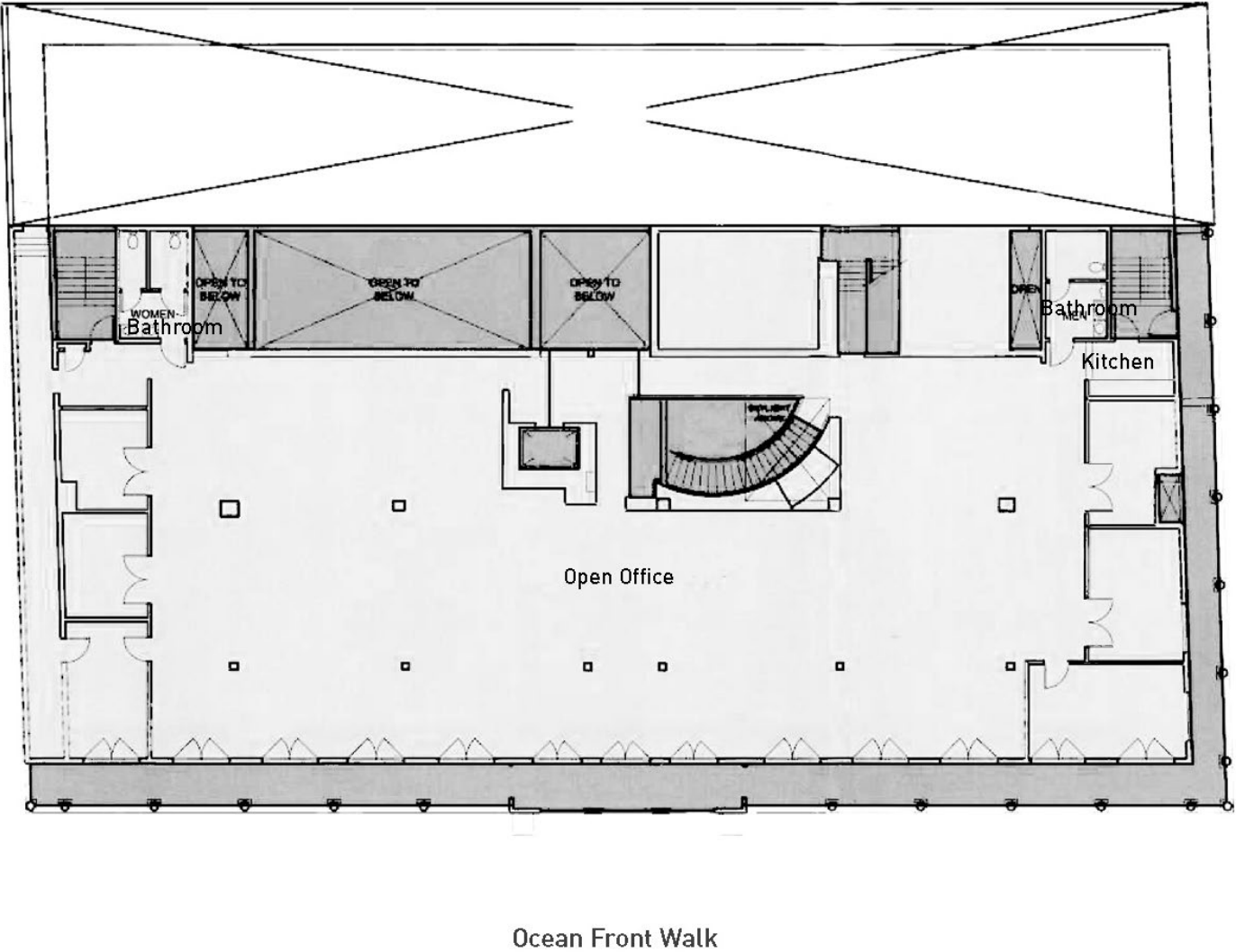
FIRST FLOOR PLAN



NOT TO SCALE.
ACTUAL SPACE MAY
VARY. FOR REFERENCE
PURPOSES ONLY.



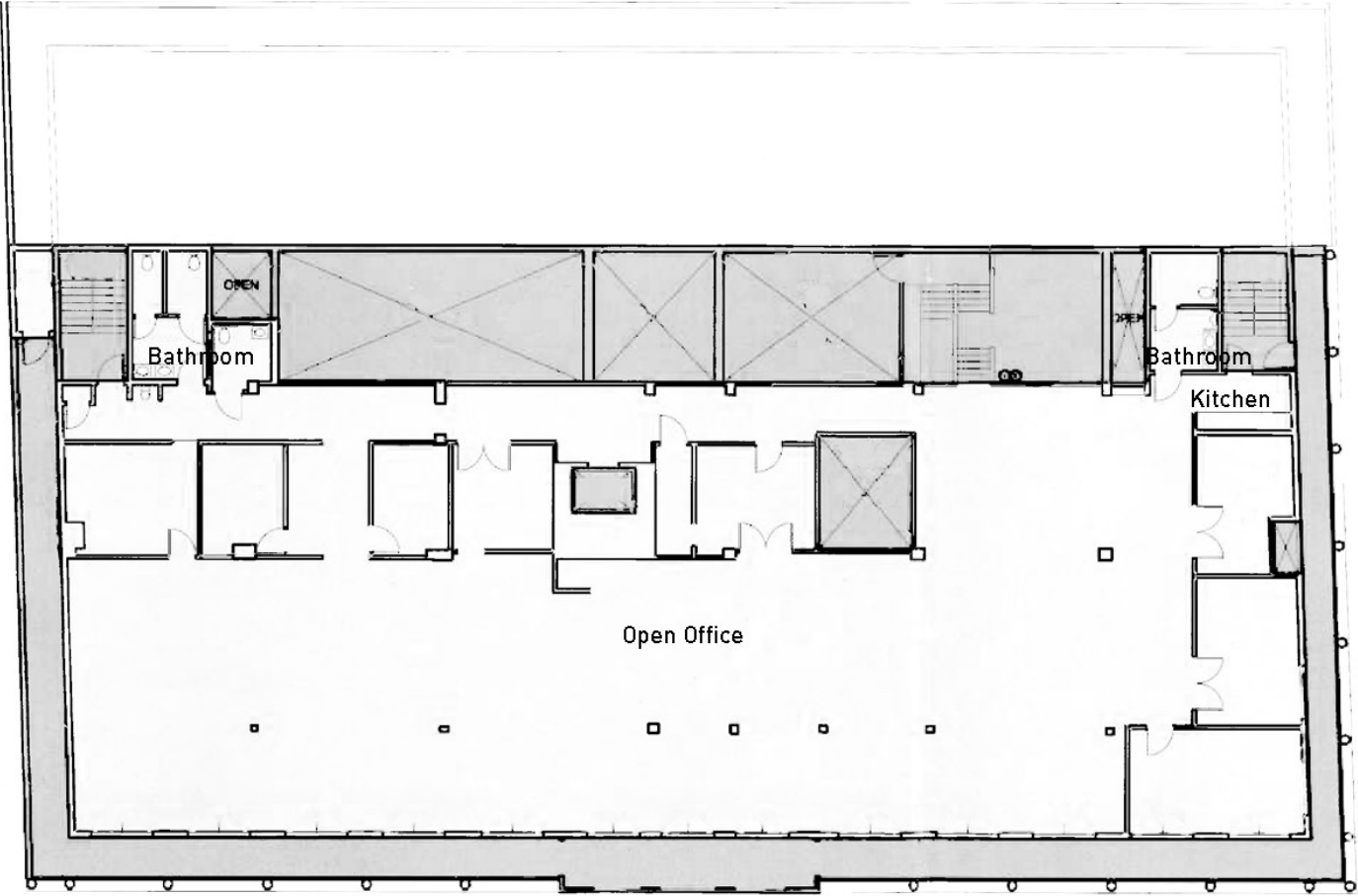
SECOND FLOOR PLAN



NOT TO SCALE.
ACTUAL SPACE MAY
VARY. FOR REFERENCE
PURPOSES ONLY.



THIRD FLOOR PLAN



NOT TO SCALE.
ACTUAL SPACE MAY
VARY. FOR REFERENCE
PURPOSES ONLY.



CHRIS CUNNINGHAM, PRINCIPAL

818 481 7891

chris@palomarealtypartners.com

BRE #01476244

OLIVER FRIES, PRINCIPAL

805 259 9638

oliver@palomarealtypartners.com

BRE #01891656

TOBY BOESSEN, DIRECTOR

703 731 2815

toby@palomarealtypartners.com

DRE #01925230

1605 Pacific Avenue
Venice, California 90291
310-392-2436

www.palomarealtypartners.com

Corporate License ID: 02050984

This presentation has been prepared by Paloma Realty Partners, Inc. ("PRP") on the basis of information obtained from PRP's client (the "Owner") and other public sources, as of the specified date. Neither PRP nor the Owner undertake any duty or obligation to update the information. Neither PRP nor the Owner makes or gives any representation, warranty or guarantee, whether express or implied, that the information contained in this presentation or otherwise supplied to the recipient, at any time by or on behalf of PRP or the Owner whether in writing or not, relating to the offering discussed herein is complete or accurate or that it has been or will be audited or independently verified, or that reasonable care has been taken in compiling, preparing or furnishing the information. All measurements are approximate and have not been verified by Broker. You are advised to conduct an independent investigation to verify all information. This presentation provides a guide only and it is not intended to be exhaustive and, in particular, does not contain disclosure of any of the risks associated with the opportunity.



PALOMA
REALTY PARTNERS