

FOR LEASE

DEERFOOT 17

2710 - 17 AVENUE SE



Anastasiya Gryshchenko
Vice President
403 888 1748
anastasiya.gry@kpliglobal.com

Estelle Tran
Managing Director
403 993 2898
estelle.tran@kpliglobal.com

Alexi Olcheski
President & CEO
403 971 5167
alexi.olcheski@kpliglobal.com






KPLI
GLOBAL

Deerfoot 17

2710 - 17 AVENUE SE

Availability	Suite 520: 4,284 sf Suite 540: 1,282 sf Suite 630: 3,665 sf Leased Suite 151: 1,465 sf Leased Suite 700: 2,093 sf
Operating Costs	Op. Costs - \$14.61 psf Tax - \$2.10 psf Total - \$16.71 psf
Parking	1 : 317 sf
Parking Cost	\$100/stall/month (surface) \$150/stall/month (underground)

Property Highlights

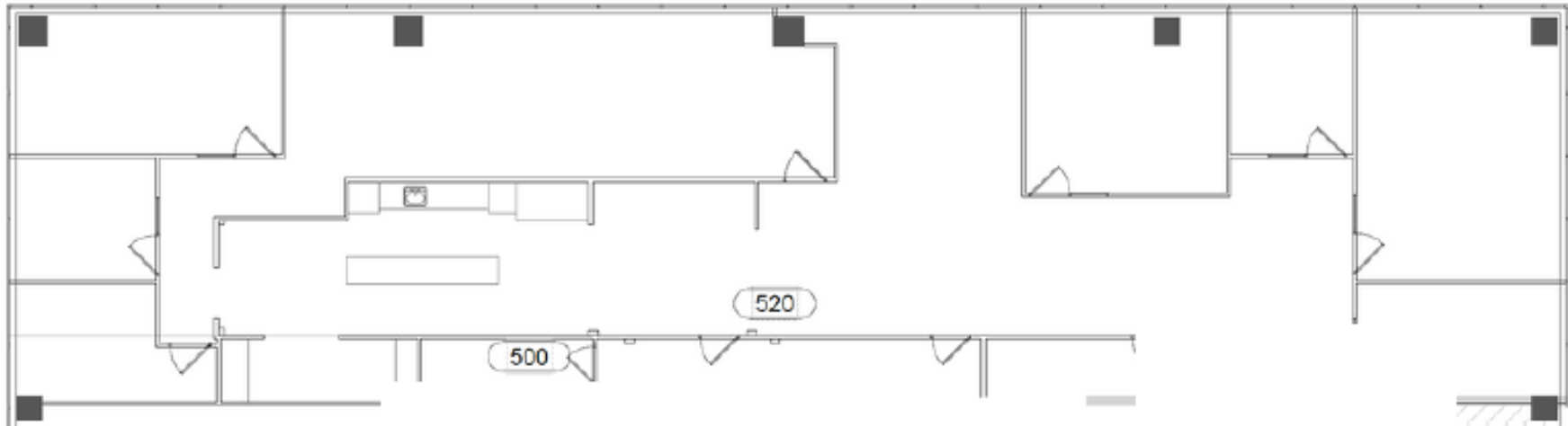
-  Prominent location with excellent visibility from Deerfoot Trail and 17th Avenue SE
-  Easy access and egress via Barlow Trail SE and Deerfoot Trail
-  Short 8 minute drive from Downtown
-  Spectacular views of the mountains and Calgary's Downtown skyline
-  Wide selection of restaurant and service amenities within close proximity, including: TD Bank, Scotiabank, Co-op, Rexall, Tim Hortons, Big Al's Bar & Grill, and A&W



Suite 520

4,284 SF

- 6 Offices
- Boardroom
- Reception
- Small open area
- Kitchen
- Storage room
- Deerfoot



Suite 630

3,665 SF

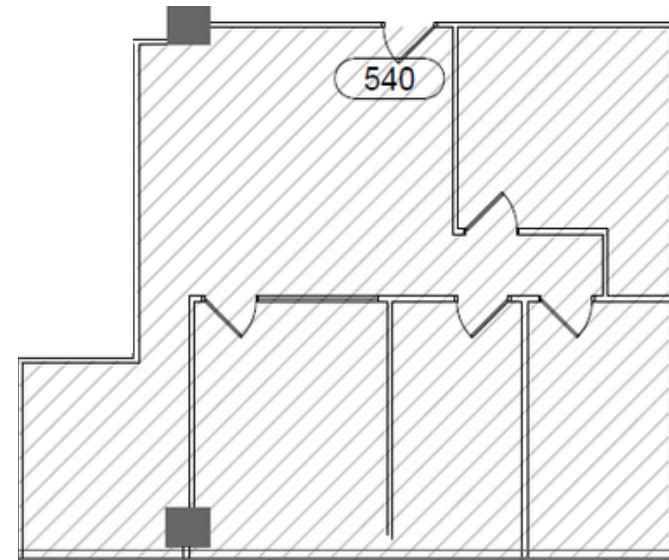
- 8 Offices
- Reception
- Kitchen
- Boardroom
- Open area



Suite 540

1,282 SF

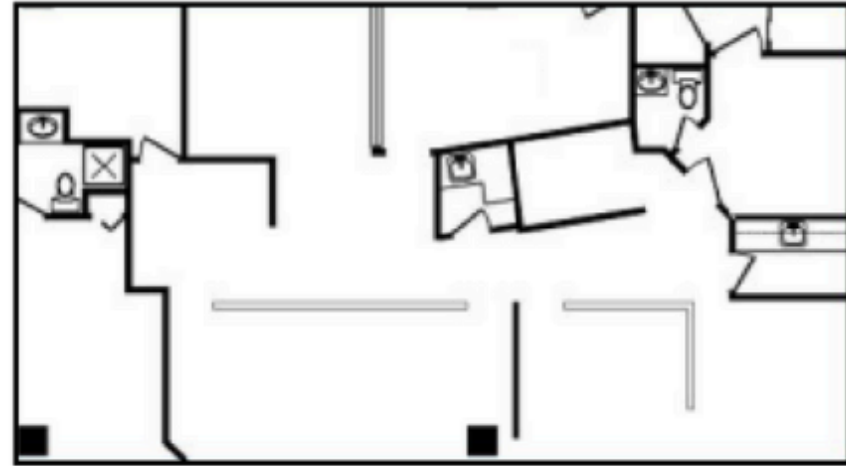
- 5 Offices
- Reception
- Open area



Suite 700

2,093 SF

- 3 Offices
- Reception area
- 2 Washrooms
- Open area

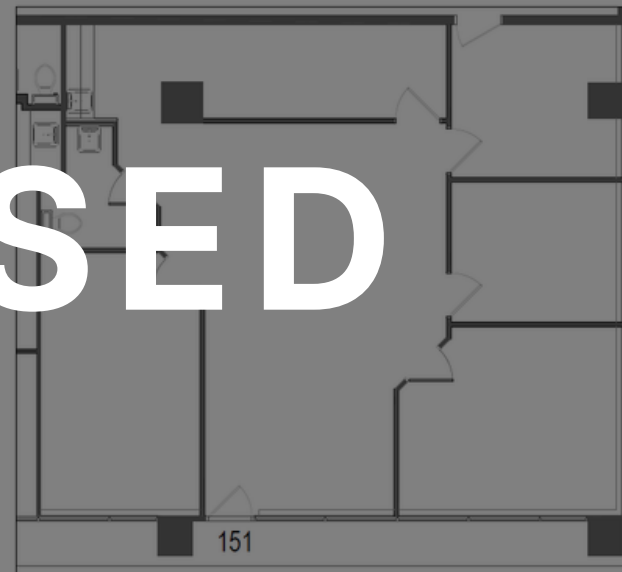


Suite 151

1,465 SF

- Signage opportunity
- 5 Offices
- Washroom
- Kitchenette

LEASED



Deerfoot 17

2710 - 17 AVENUE SE



Alexi Olcheski

President & CEO

403 971 5167

alexi.olcheski@kpliglobal.com



Estelle Tran

Managing Director

403 993 2898

stelle.tran@kpliglobal.com



Anastasiya Gryshchenko

Vice President

403 888 1748

anastasiya.gry@kpliglobal.com

KPLIGLOBAL.COM

© 2025 KPLI Global Corp. All rights reserved.

