

241 ATLANTIC AVENUE

CORNER OF BOERUM PLACE | COBBLE HILL, BROOKLYN



241 ATLANTIC AVENUE

CORNER OF BOERUM PLACE | COBBLE HILL, BROOKLYN

PROPERTY HIGHLIGHTS:

- Located at the heart of the downtown Brooklyn residential/office boom
- Mixed-use property with 70,000 SF of retail & 93 apartment units above
- Highly visible wraparound frontage on the corner of Atlantic Avenue & Boerum Place
- Co-tenants include: *Marshalls & Planet Fitness*
- Shadow anchored by: *Trader Joe's, Michaels, Blink Fitness, TD Bank, CVS, Rite Aid, UA Theater, Barclays Center, Lululemon*

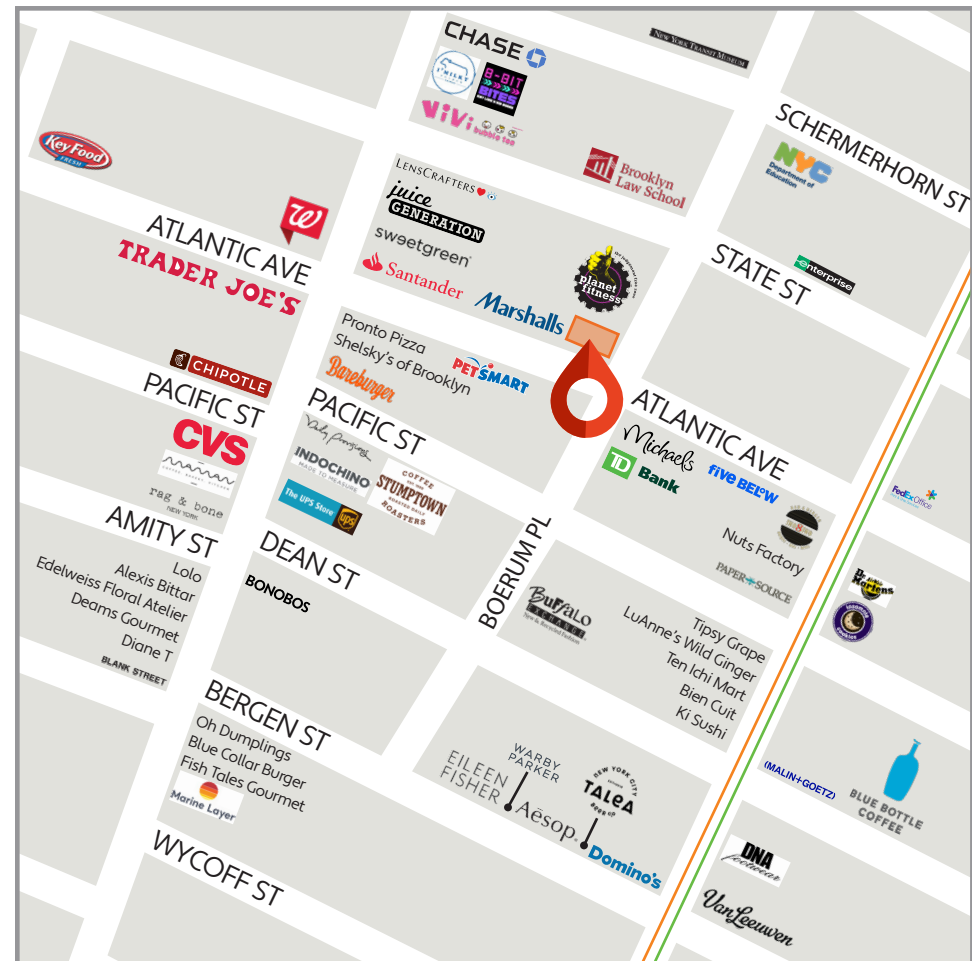
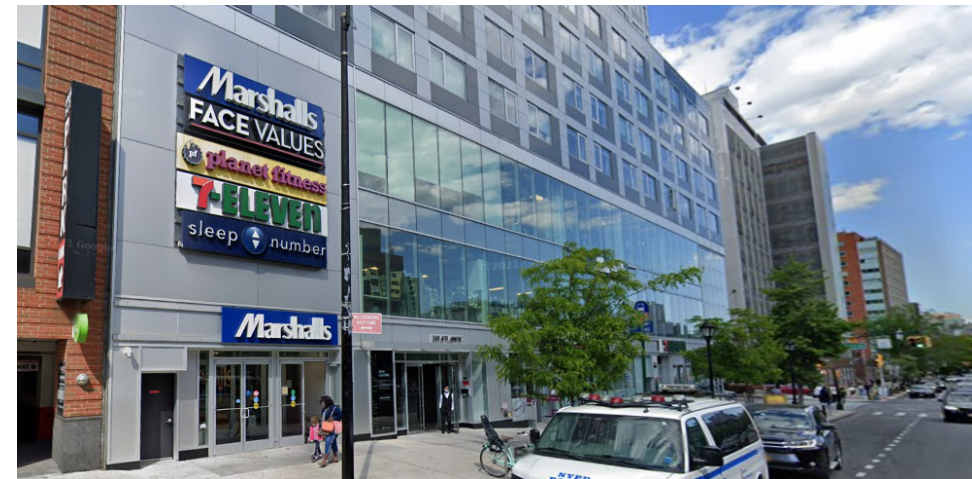
SIZE: 2,295 SF Ground Floor

FRONTAGE: 50'

POSSESSION: Immediate

ASKING RENT: Upon Request

TRANSPORTATION: A C F G



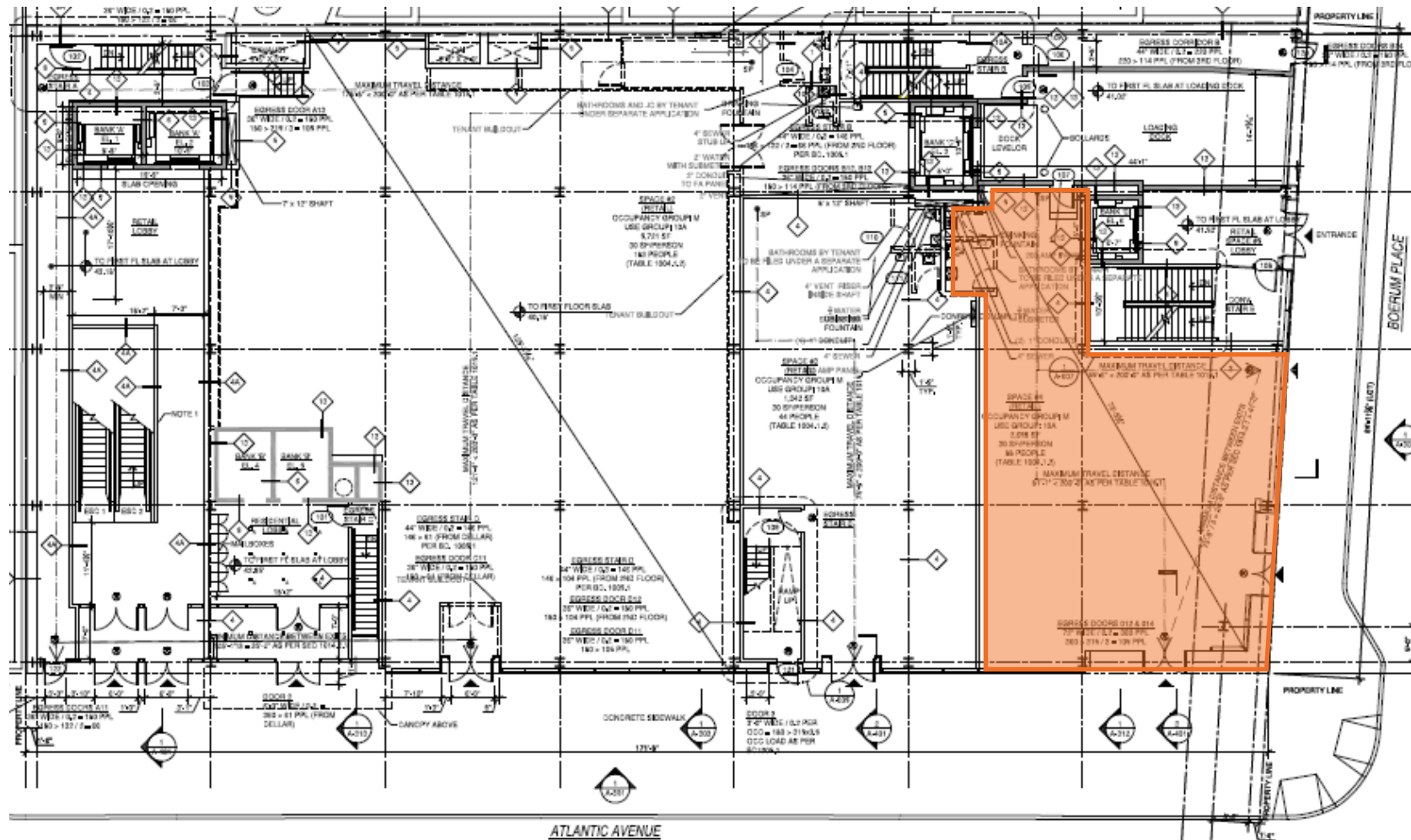
All information supplied in this marketing presentation and/or flyer is from sources deemed reliable and is furnished subject to errors, omissions, modifications, removal of listings from sale/lease and to any listing condition. Any square footage, dimensions, floor plans and/or technical data set forth are approximations and are subject to further elaboration/confirmation.



241 ATLANTIC AVENUE

CORNER OF BOERUM PLACE | COBBLE HILL, BROOKLYN

FLOOR PLANS:
GROUND FLOOR - 2,295 SF



241 ATLANTIC AVENUE

CORNER OF BOERUM PLACE | COBBLE HILL, BROOKLYN

FOR MORE INFORMATION,
PLEASE CONTACT:

ORI MELLOUL

347.377.1392 | OMelloul@ksrny.com

SOLOMON SHARABY

718.986.7149 | SSharaby@ksrny.com

EZRA FALACK

917.518.3568 | EFalack@ksrny.com

ALBERT MANOPLA

212.380.8369 | AManopla@ksrny.com

