



119 S Locust Street | Visalia, CA

Property For Lease

1005 N Demaree Street
Visalia, California 93291
O | 559.754.3020
F | 559.429.4016
www.mdgre.com

GRAHAM & ASSOCIATES

Matt Graham
Lic# 01804235
www.mdgre.com

to learn more, visit: www.mdgre.com

119 S Locust Street | Visalia, CA

GRAHAM | & ASSOCIATES

Property For Lease

PROPERTY DETAILS

Address:	119 S Locust Street Visalia, CA
APN:	594-326-010
Building Size:	3,215 +/- Sq. Ft. Ground Floor 3,215 +/- Sq. Ft. 2nd Floor *LEASED* 2,252 +/- Sq. ft. Basement
Zoning:	CBD
Lease Rate:	\$2.15 Per Sq. Ft. NNN Office \$1.50 Per Sq. Ft. NNN Basement

Additional Comments:

Medical office space available for lease in downtown Visalia right across the street from Kaweah Delta Healthcare. The two story building offers a large ground floor office space and finished basement with elevator service. Also, included in the property are six designated parking spaces on-site. Please call for further details.



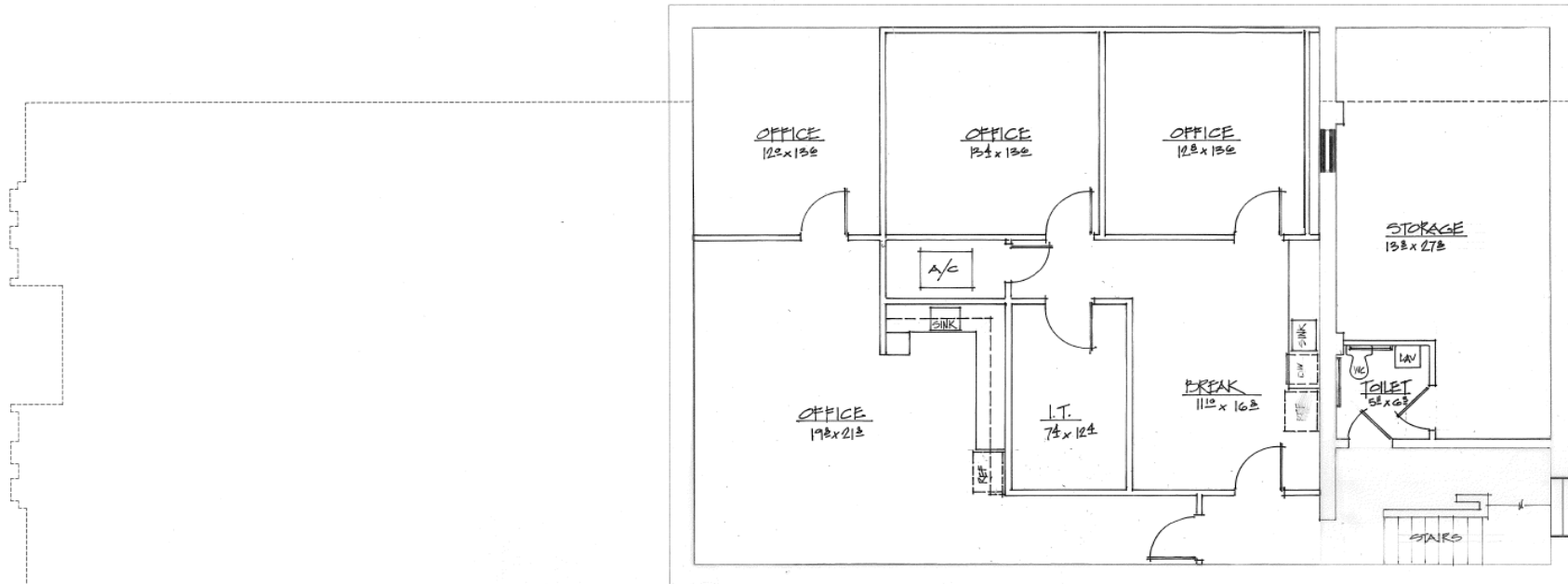
Contact Broker:
Matt Graham
Lic# 01804235

to learn more, visit: www.mdgre.com

1005 N Demaree Street
Visalia, California 93291
O | 559.754.3020

PLEASE NOTE: ALL INFORMATION AND REPRESENTATION MADE HEREIN, WHILE NOT GUARANTEED, HAVE BEEN SECURED FROM SOURCES WE BELIEVE TO BE RELIABLE, HOWEVER, THEY ARE NOT WARRANTED BY MATT GRAHAM & ASSOCIATES AND ARE SUBJECT TO CHANGE WITHOUT NOTICE.

FLOOR PLAN - BASEMENT



GROSS BASEMENT AREA	2,252 SF
MINUS STAIR AREA	492 SF
NET BASEMENT AREA	1,760 SF
DIVIDED BY OCCUPANCY FACTOR	100 SF
NET OCCUPANTS	16.60 OCCUPANTS
MAX. OCCUPANT LOAD	16 OCCUPANTS
CUBICLE SIZE	5' X 5'

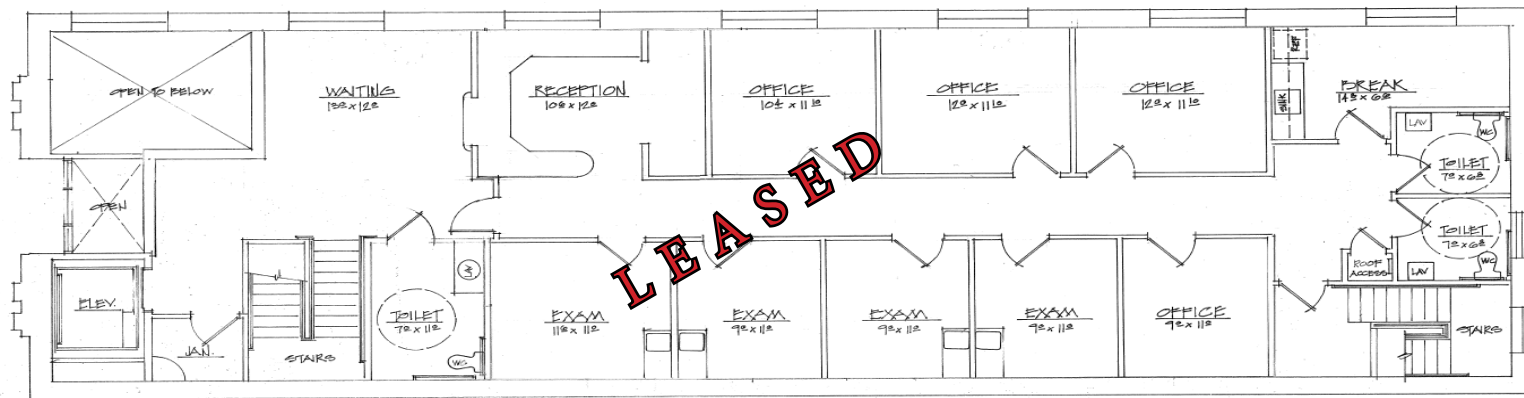
BASEMENT

BUILDING AREA: 2,252 SQ. FT.

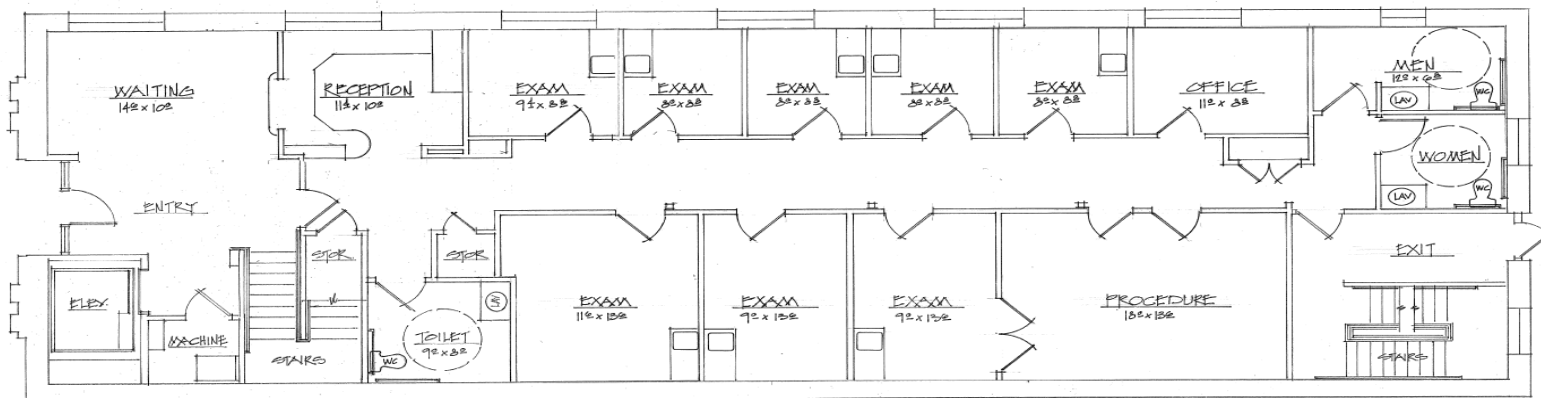
SCALE: 1/4"=1'-0"



FLOOR PLAN - GROUND FLOOR & 2ND FLOOR

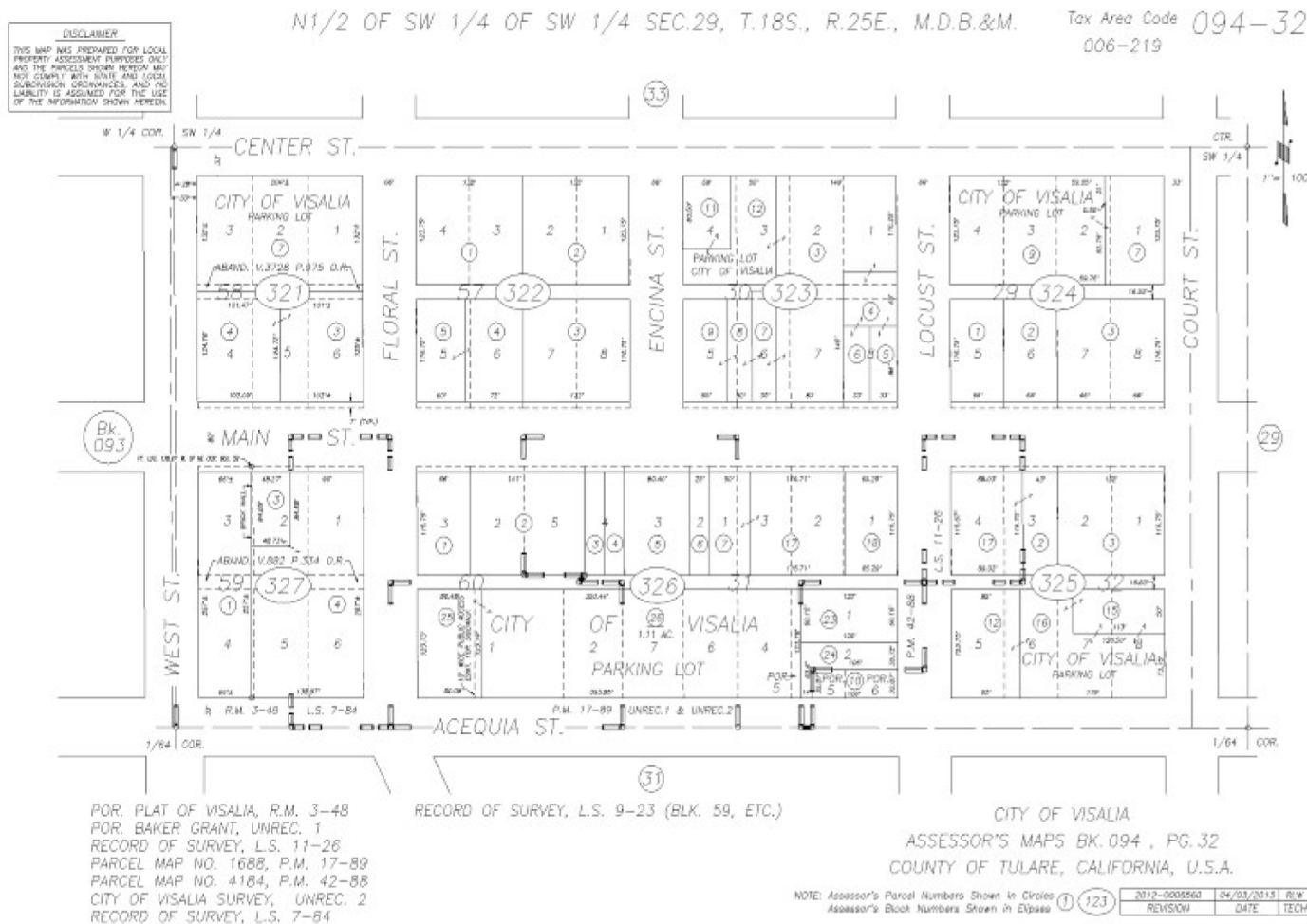


SECOND FLOOR 3,215 SQ. FT. • BUILDING AREA



GROUND FLOOR 3,215 SQ. FT. • BUILDING AREA

TAX MAP

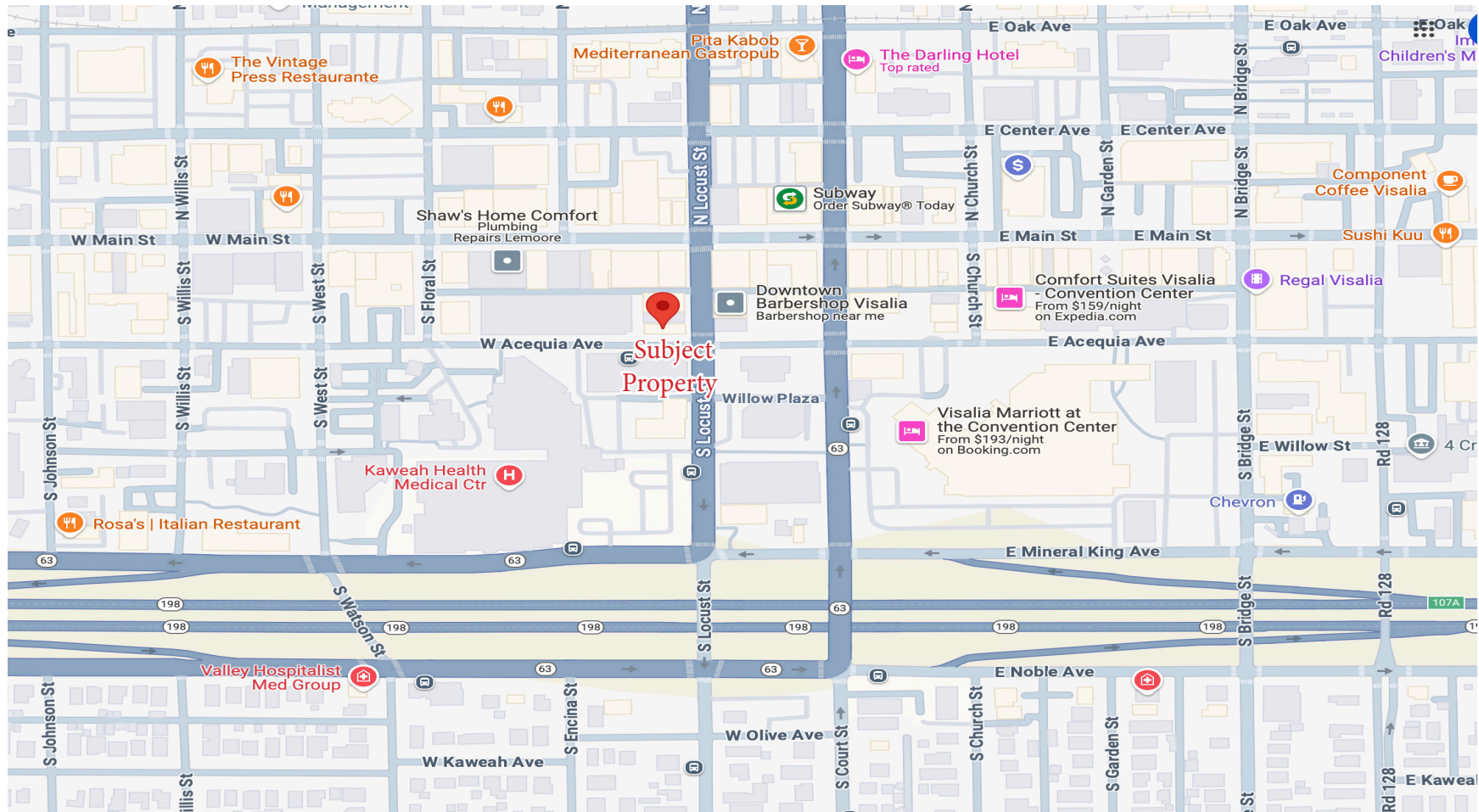


119 S Locust Street | Visalia, CA

GRAHAM & ASSOCIATES

Property For Lease

LOCATION MAP



PLEASE NOTE: ALL INFORMATION AND REPRESENTATION MADE HEREIN, WHILE NOT GUARANTEED, HAVE BEEN SECURED FROM SOURCES WE BELIEVE TO BE RELIABLE, HOWEVER, THEY ARE NOT WARRANTED BY MATT GRAHAM & ASSOCIATES AND ARE SUBJECT TO CHANGE WITHOUT NOTICE.

119 S Locust Street | Visalia, CA

GRAHAM & ASSOCIATES

Property For Lease

AERIAL MAP



PLEASE NOTE: ALL INFORMATION AND REPRESENTATION MADE HEREIN, WHILE NOT GUARANTEED, HAVE BEEN SECURED FROM SOURCES WE BELIEVE TO BE RELIABLE, HOWEVER, THEY ARE NOT WARRANTED BY MATT GRAHAM & ASSOCIATES AND ARE SUBJECT TO CHANGE WITHOUT NOTICE.

119 S Locust Street | Visalia, CA

GRAHAM & ASSOCIATES

Property For Lease

PROPERTY PHOTOS



PLEASE NOTE: ALL INFORMATION AND REPRESENTATION MADE HEREIN, WHILE NOT GUARANTEED, HAVE BEEN SECURED FROM SOURCES WE BELIEVE TO BE RELIABLE, HOWEVER, THEY ARE NOT WARRANTED BY MATT GRAHAM & ASSOCIATES AND ARE SUBJECT TO CHANGE WITHOUT NOTICE.

119 S Locust Street | Visalia, CA

GRAHAM & ASSOCIATES

Property For Lease

PROPERTY PHOTOS



PLEASE NOTE: ALL INFORMATION AND REPRESENTATION MADE HEREIN, WHILE NOT GUARANTEED, HAVE BEEN SECURED FROM SOURCES WE BELIEVE TO BE RELIABLE, HOWEVER, THEY ARE NOT WARRANTED BY MATT GRAHAM & ASSOCIATES AND ARE SUBJECT TO CHANGE WITHOUT NOTICE.