

±5,500 SF OFFICE SPACE AVAILABLE FOR LEASE

1546 5TH STREET NW

WASHINGTON, DC 20001



FOUNDRY
COMMERCIAL

PROPERTY & SPACE OFFERING HIGHLIGHTS

- The property is located in the Shaw Neighborhood of Washington DC, on 5th St NW, between P St NW and O St NW, making it easily accessible by public transportation and within walking distance of several Metro stations
- The property is surrounded by residential, school/daycare, and walkable retail/mixed uses that make for ideal pick up and drop off plans
- The space available is located within the annex building facing/along 5th St NW, and consists of multiple classrooms, large auditorium space, access to shared auditorium spaces, elevators, stairwells, and a small courtyard that can be used as outdoor space
- Parking is available; the building can accommodate up to 60 vehicles and is accessible from 5th St NW

SUITE DETAILS

Suite:	TBD
Floors:	3 Floors
Size:	±5,500 SF
Lease Term:	Negotiable

PROPERTY AERIAL

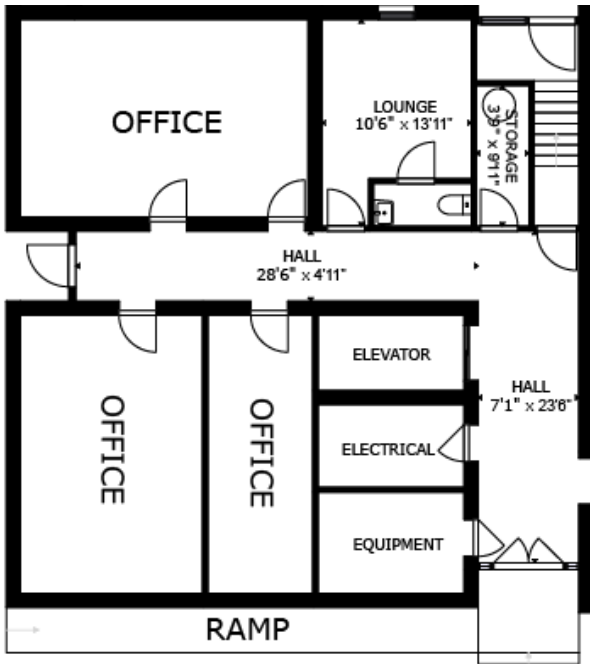


**WHAT DO YOU WANT TO PAY?
HOW MUCH SPACE FOR HOW LONG?**

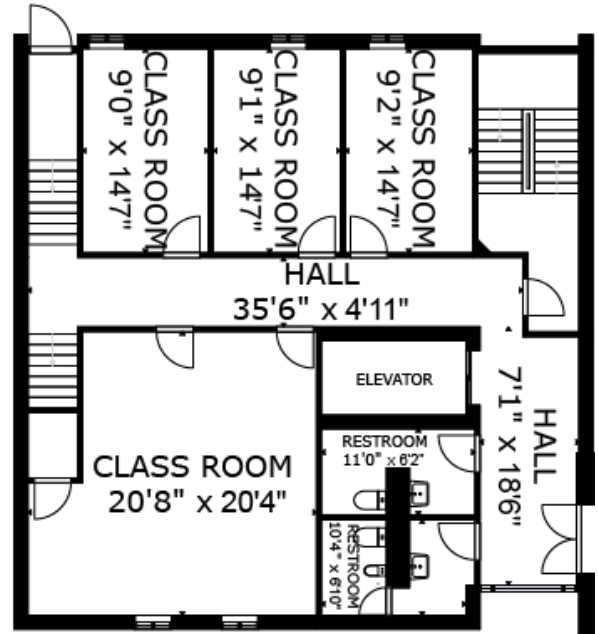
[CLICK HERE TO LET US KNOW](#)

FLOOR PLANS

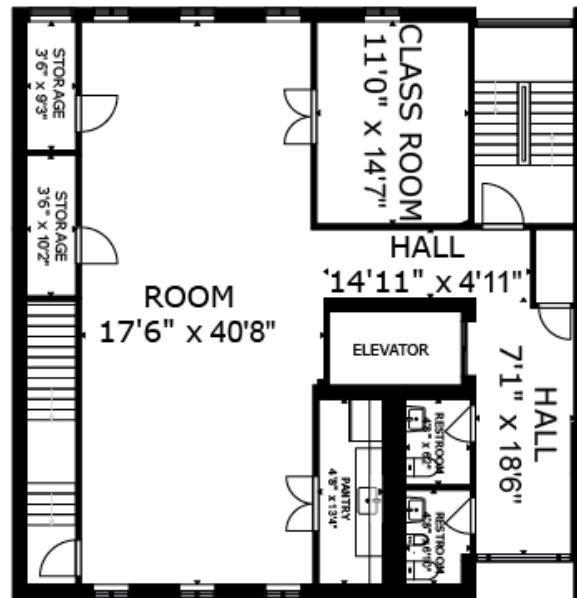
1ST FLOOR



2ND FLOOR



3RD FLOOR



FOR MORE INFORMATION:

ANDREW GENOVA 301.512.8298 | andrew.genova@foundrycommercial.com
JUSTIN BARKER 301.461.2932 | justin.barker@foundrycommercial.com

NEARBY RETAILERS & AMENITIES



FOR MORE INFORMATION:

ANDREW GENOVA 301.512.8298 | andrew.genova@foundrycommercial.com

JUSTIN BARKER 301.461.2932 | justin.barker@foundrycommercial.com

FOUNDRY
COMMERCIAL

www.foundrycommercial.com