

FOR LEASE | 7,740 SF



STOREFRONT RETAIL/OFFICE SPACE | TREMENDOUS STREET VISIBILITY

12942 GALWAY STREET | GARDEN GROVE, CA 92841

JASMINE MAGDALENO

Senior Associate
424.634.9202
jmagdaleno@spectrumcre.com
CA DRE Lic. #02056822

No warranty, express or implied, is made as to the accuracy of the information contained herein. This information is submitted subject to errors, omission, change of price, rental or other conditions, withdrawal without notice, and is subject to any special listing conditions imposed by our principals. Cooperating brokers, buyers, tenants and other parties who receive this document should not rely on it, but should use it as a starting point of analysis, and should independently confirm the accuracy of the information contained herein through a due diligence review of the books, records, files and documents that constitute reliable sources of the information described herein. Spectrum Commercial Real Estate, Inc. CA DRE #02042805

SPECTRUM
COMMERCIAL REAL ESTATE, INC.

spectrumcre.com | 818.252.9900

PROPERTY OVERVIEW

Now available for lease at 12942 Galway Street - this well-maintained commercial property offers two versatile units ideal for office or retail use. Each unit features private office rooms, a kitchen area, and its own restroom, providing a functional layout suited for a wide range of businesses. Additionally, the property includes a shower area, adding extra convenience for professionals who need on-site amenities. Located in a central and accessible area of Garden Grove, just minutes from major thoroughfares, this location offers excellent visibility and ease of access for clients and employees alike.

Whether you're a growing startup, professional service provider, or retail business, these units provide a clean, flexible, and comfortable space to support your operations. Ample parking is available on-site, and the surrounding area is quiet and professional, perfect for focused work or customer-facing services. Don't miss this opportunity to secure a prime space in one of Garden Grove's most established commercial neighborhoods

ADDRESS 12942 Galway St | Garden Grove, CA 92841

GROSS LEASABLE AREA 7,740 SF

PROPERTY TYPE Storefront Retail/Office

YEAR BUILT 1989

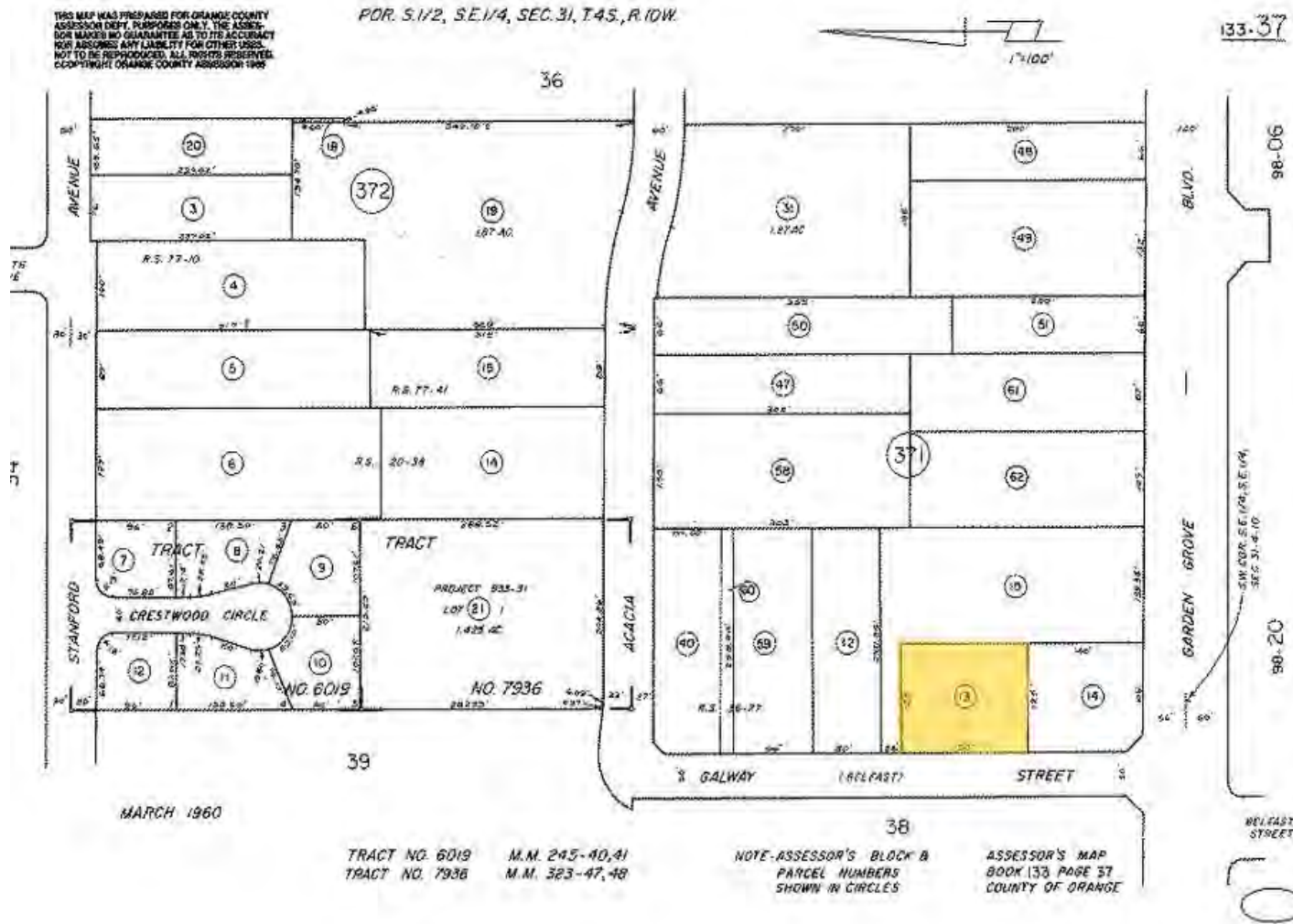
RENTAL RATE \$38.40 SF/YR

RENTAL RATE /MONTH \$3.20 SF/MO

PARKING RATIO 4.26/1,000 SF



SITE MAP



JASMINE MAGDALENO

Senior Associate
424.634.9202

jmagdaleno@spectrumcre.com
CA DRE Lic. #02056822

No warranty, express or implied, is made as to the accuracy of the information contained herein. This information is submitted subject to errors, omission, change of price, rental or other conditions, withdrawal without notice, and is subject to any special listing conditions imposed by our principals. Cooperating brokers, buyers, tenants and other parties who receive this document should not rely on it, but should use it as a starting point of analysis, and should independently confirm the accuracy of the information contained herein through a due diligence review of the books, records, files and documents that constitute reliable sources of the information described herein. Spectrum Commercial Real Estate, Inc. CA DRE #02042805

SPECTRUM
COMMERCIAL REAL ESTATE, INC.

spectrumcre.com | 818.252.9900

AMENITIES MAP



JASMINE MAGDALENO

Senior Associate
424.634.9202

jmagdaleno@spectrumcre.com
CA DRE Lic. #02056822

No warranty, express or implied, is made as to the accuracy of the information contained herein. This information is submitted subject to errors, omission, change of price, rental or other conditions, withdrawal without notice, and is subject to any special listing conditions imposed by our principals. Cooperating brokers, buyers, tenants and other parties who receive this document should not rely on it, but should use it as a starting point of analysis, and should independently confirm the accuracy of the information contained herein through a due diligence review of the books, records, files and documents that constitute reliable sources of the information described herein. Spectrum Commercial Real Estate, Inc. CA DRE #02042805

SPECTRUM
COMMERCIAL REAL ESTATE, INC.

spectrumcre.com | 818.252.9900

DEMOGRAPHIC DATA



POPULATION

	1 MILE	3 MILES	5 MILES
Estimated Population	34,546	289,575	750,489
Estimated Households	10,144	80,791	221,328



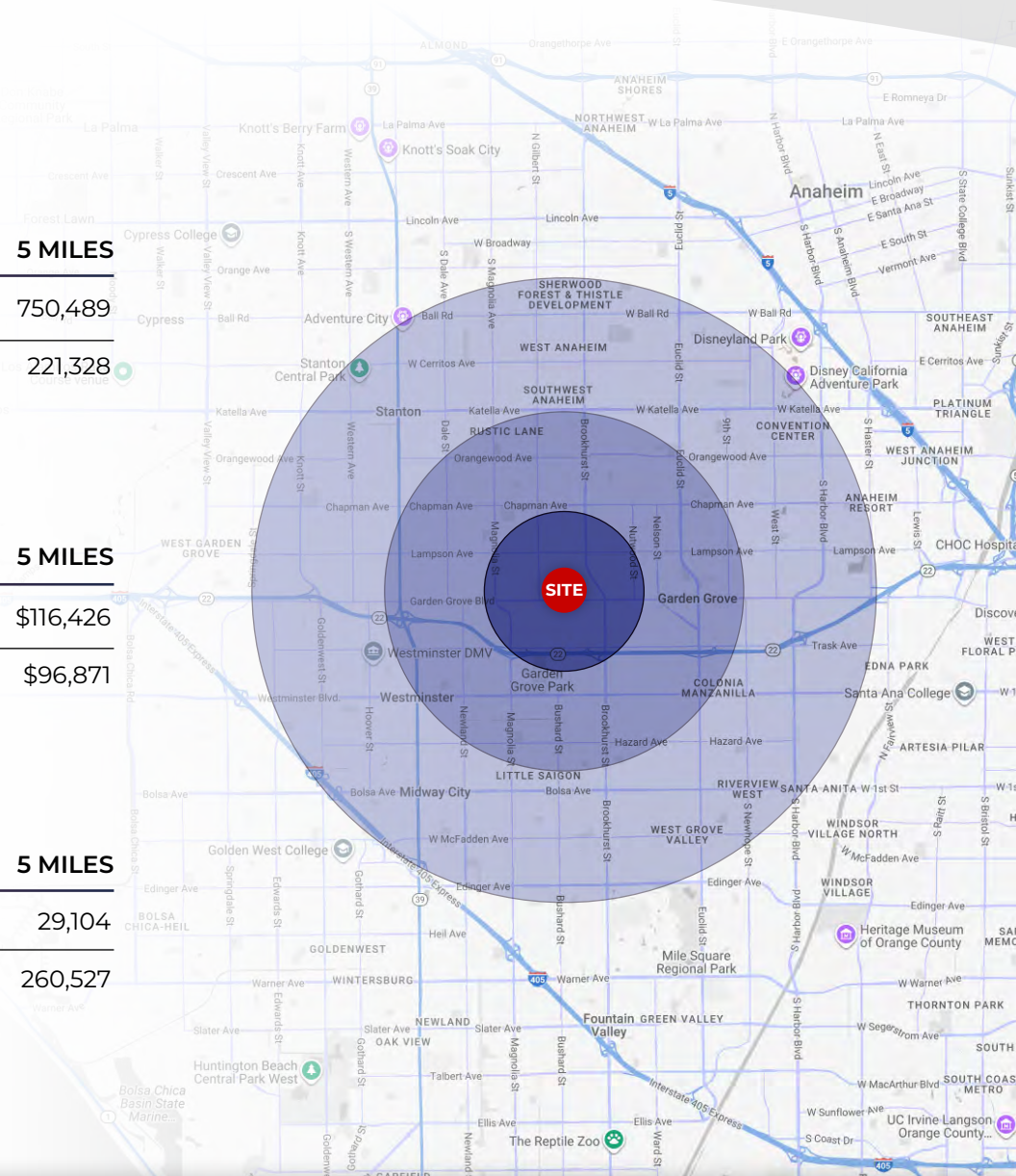
HOUSEHOLD INCOME

	1 MILE	3 MILES	5 MILES
Average Household Income	\$104,613	\$107,620	\$116,426
Median Household Income	\$82,641	\$87,756	\$96,871



DAYTIME POPULATION

	1 MILE	3 MILES	5 MILES
Total Businesses	1,499	10,341	29,104
Total Employees	8,312	69,106	260,527



JASMINE MAGDALENO

Senior Associate
424.634.9202

jmagdaleno@spectrumcre.com
CA DRE Lic. #02056822

No warranty, express or implied, is made as to the accuracy of the information contained herein. This information is submitted subject to errors, omission, change of price, rental or other conditions, withdrawal without notice, and is subject to any special listing conditions imposed by our principals. Cooperating brokers, buyers, tenants and other parties who receive this document should not rely on it, but should use it as a starting point of analysis, and should independently confirm the accuracy of the information contained herein through a due diligence review of the books, records, files and documents that constitute reliable sources of the information described herein. Spectrum Commercial Real Estate, Inc. CA DRE #02042805

SPECTRUM
COMMERCIAL REAL ESTATE, INC.

spectrumcre.com | 818.252.9900

FOR LEASE

12942

GALWAY STREET

GARDEN GROVE, CA



JASMINE MAGDALENO

Senior Associate
424.634.9202

jmagdaleno@spectrumcre.com
CA DRE Lic. #02056822

SPECTRUM
COMMERCIAL REAL ESTATE, INC.

spectrumcre.com | 818.252.9900

No warranty, express or implied, is made as to the accuracy of the information contained herein. This information is submitted subject to errors, omission, change of price, rental or other conditions, withdrawal without notice, and is subject to any special listing conditions imposed by our principals. Cooperating brokers, buyers, tenants and other parties who receive this document should not rely on it, but should use it as a starting point of analysis, and should independently confirm the accuracy of the information contained herein through a due diligence review of the books, records, files and documents that constitute reliable sources of the information described herein. Spectrum Commercial Real Estate, Inc. CA DRE #02042805