

147 S. CHERRY STREET, SUITE 200 | WINSTON-SALEM, NC 27101 | P 336.722.1986 | F 336.723.3173 | MERIDIANREALTY.COM

Office | Investment

**1365 Westgate Center Drive**  
**Unit C2, Winston-Salem, NC 27103**

Unit C2, Winston-Salem, NC 27103



For more information:

**Jesse H. Jarrell, CCIM**

Jjarrell@meridianrealty.com

336.480.2324

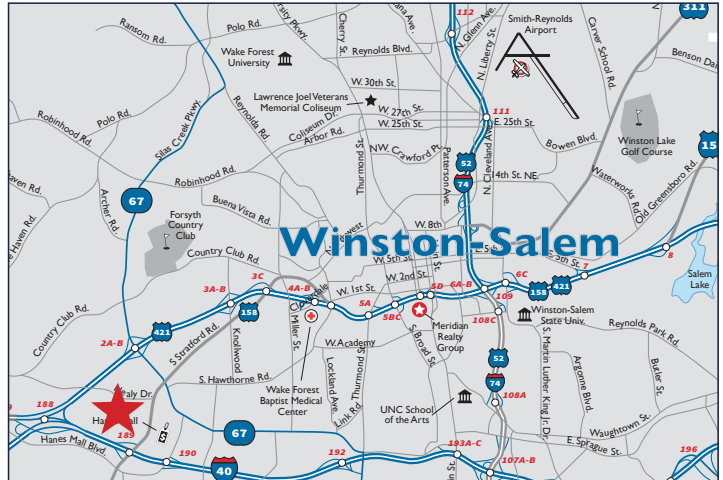
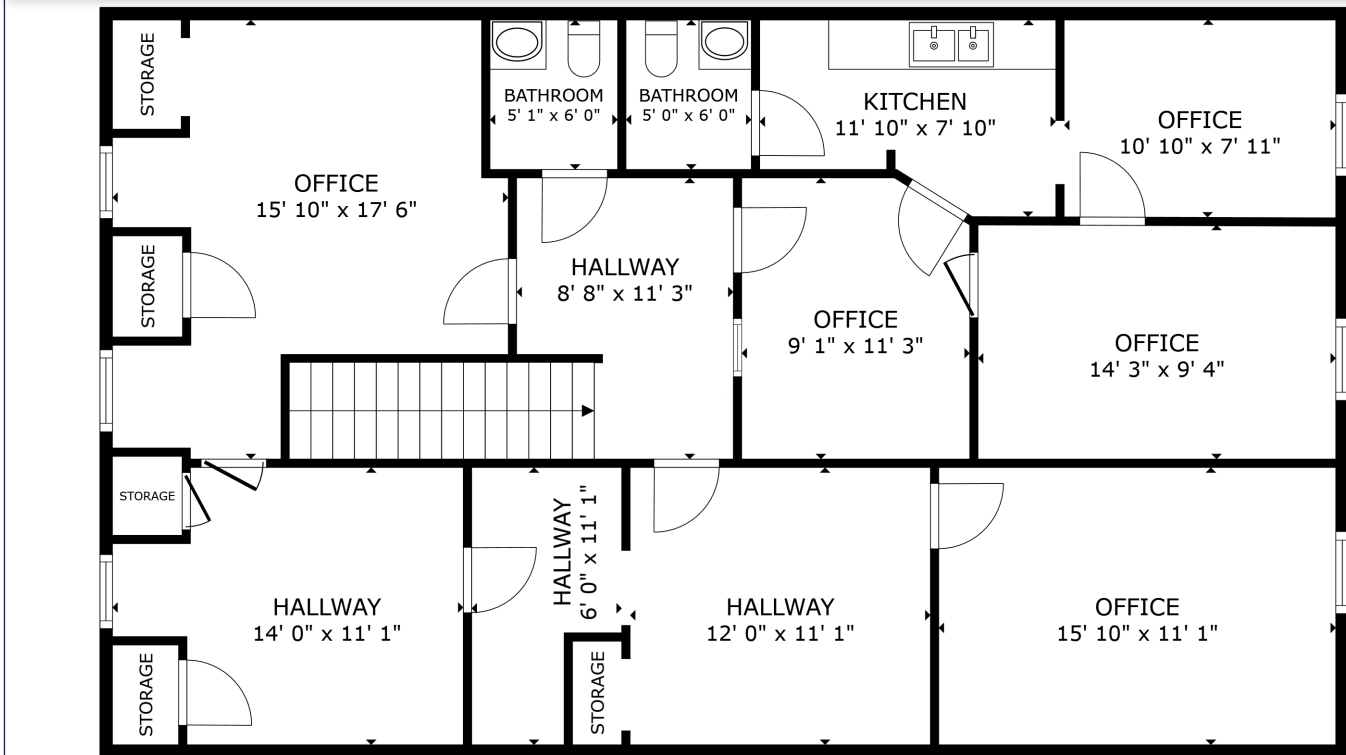
**FOR SALE: \$234,000**

[WWW.MERIDIANREALTY.COM](http://WWW.MERIDIANREALTY.COM)



1365 Westgate Center Dr., Unit C2 | Winston-Salem, NC, 27103

## Floor Plan



- ±1,500 SF second-story office condo
- Excellent access to I-40, Hanes Mall, and Stratford Road
- Ideal for professional or service users
- Ample parking

- 10.4% CAP Rate
- Ideal 1031 Exchange
- Low Maintenance with POA
- Price: \$234,000.00

No warranty or representation (express or implied) is made as to the accuracy or completeness of the information set forth herein. All information is submitted subject to errors, omissions, change of price, prior lease or sale, and withdrawal without notice. All marketing material produced by the Meridian Realty Group is proprietary. Any reproduction is expressly prohibited.



THE MERIDIAN REALTY GROUP | 147 S. CHERRY STREET, SUITE 200 | WINSTON-SALEM, NC 27101

P 336.722.1986 | F 336.723.3173

WWW.MERIDIANREALTY.COM