

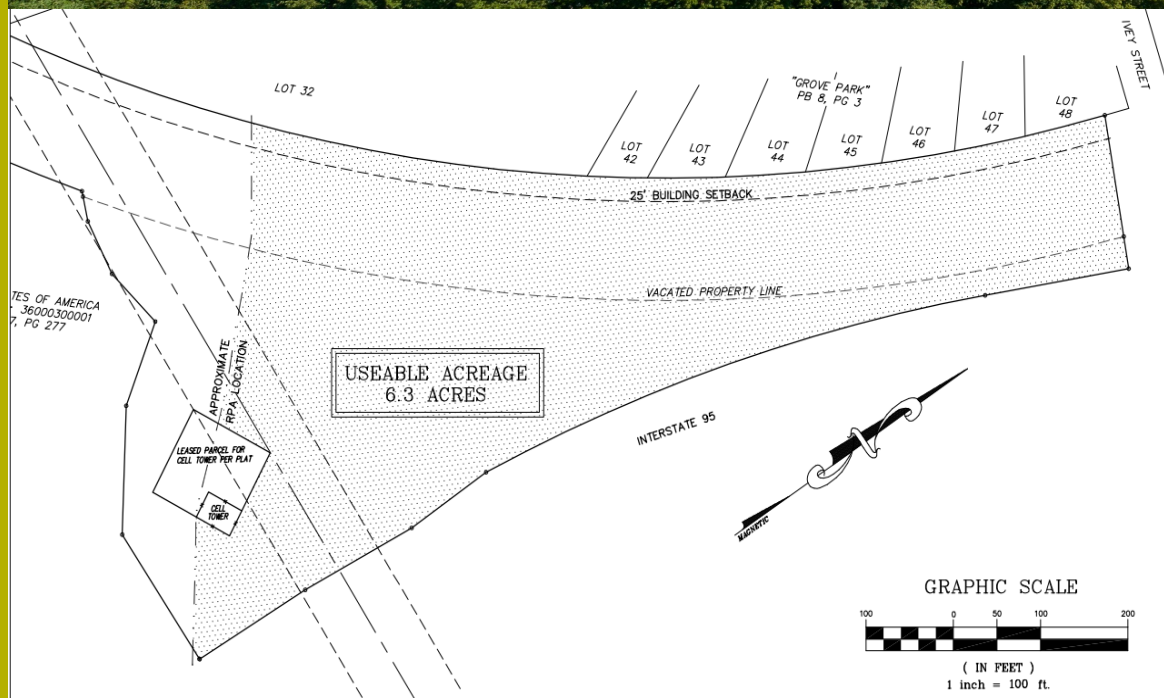
West Roslyn Farm - 8.6 +/- Acres Colonial Heights, VA

*Highly Visible
Property with
Access &
Visibility to
Interstates 95
(Exit 53
111,000 VPD)*

*Adjacent to
Appomattox
River Trail*

*Additional
Onsite
Revenue
Available*

*Zoned:
Industrial*



Fielding Quarles

fquarles@roslynfarmcorp.com

Phone: 804.526.0820

www.roslynfarmcorp.com

- 8.6 +/- Total Acres, 6.3 +/- Buildable Acres outside RPA
- Water & Power Onsite w/ Sewer & Gas Available