




ILLINOIS MEDICAL DISTRICT



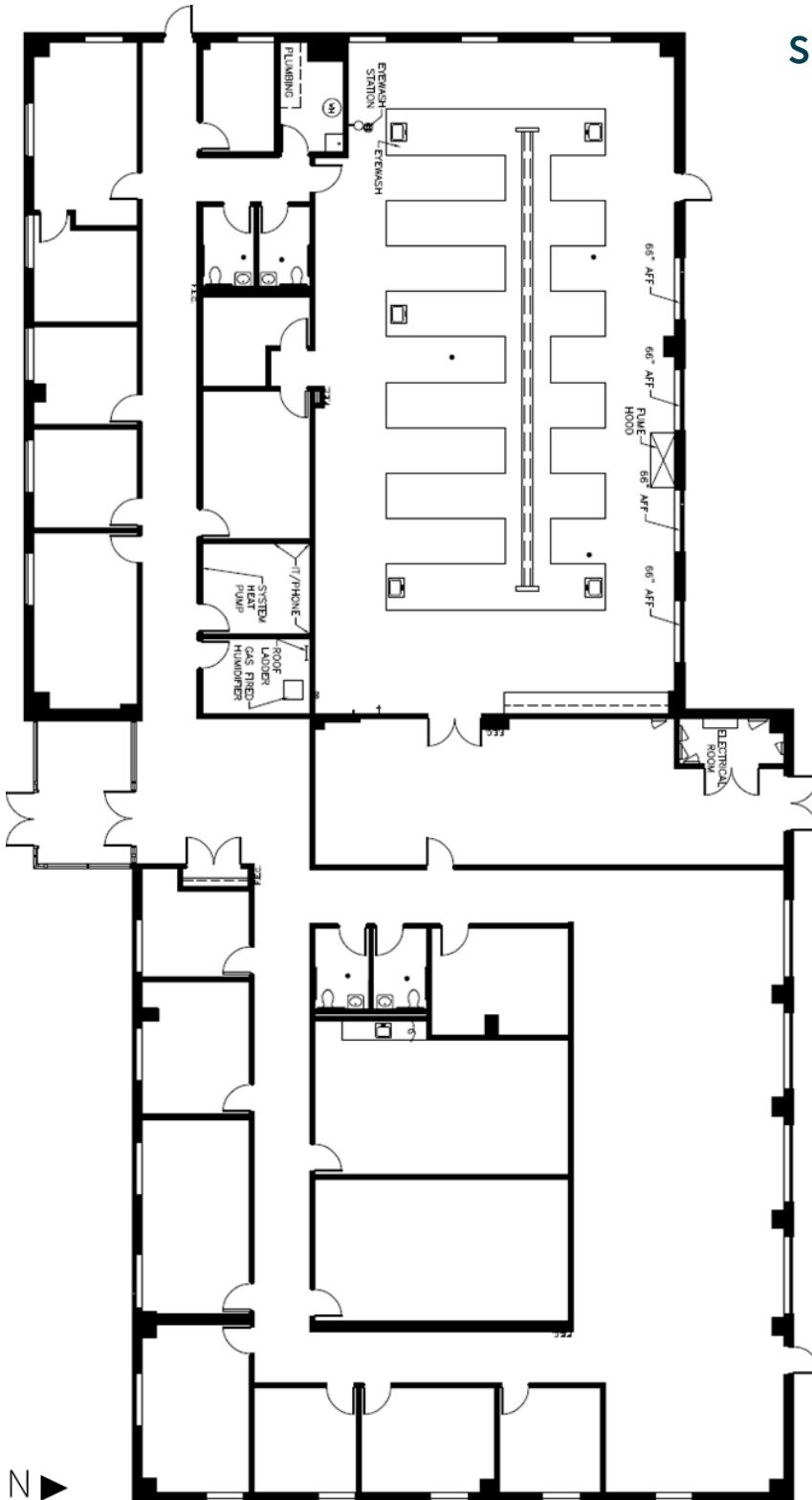
 **JLL** SEE A BRIGHTER WAY

# 2250 W Campbell Park Drive

Chicago, IL 60612

11,900 RSF Office / Lab Space  
in the Illinois Medical District

Entire building - 11,900 RSF



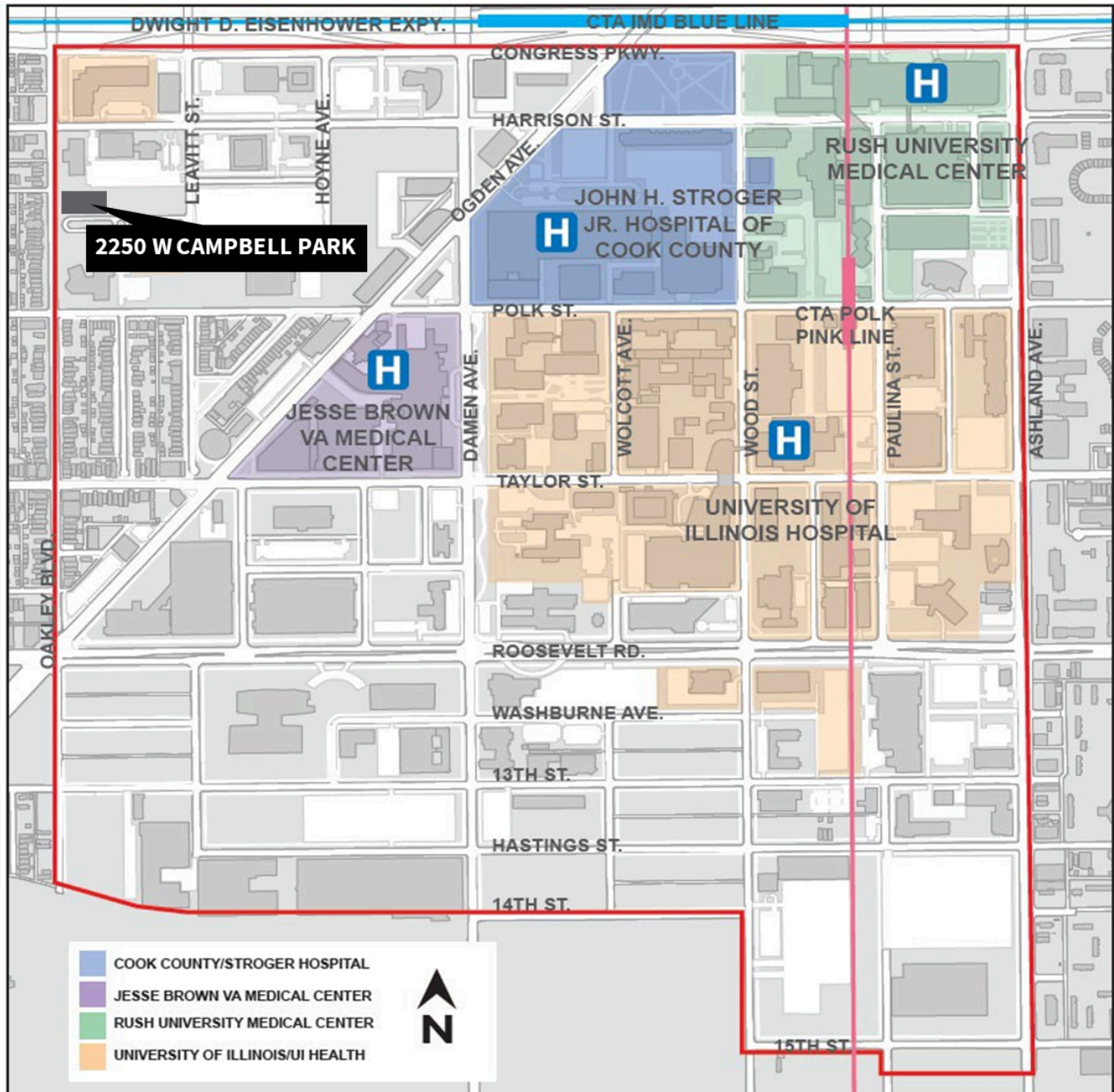
### Space details

- 3,000 SF of lab space
- 9 offices
- Conference room
- Kitchen / café
- Workshop area
- Up to 25 parking spaces available

[Virtual Tour](#)



# Illinois Medical District Area Overview



**Max Zwolan**  
 Senior Vice President, JLL  
 Max.Zwolan@jll.com  
 +1 734 255 5810

**Grace Fangman**  
 Associate, JLL  
 Grace.Fangman@jll.com  
 +1 312 245 5010

**Sarah Ware**  
 Founder and CEO, Ware Realty Group  
 Sarah@jwarerealtygroup.com  
 +1 312 376 1448 x101