

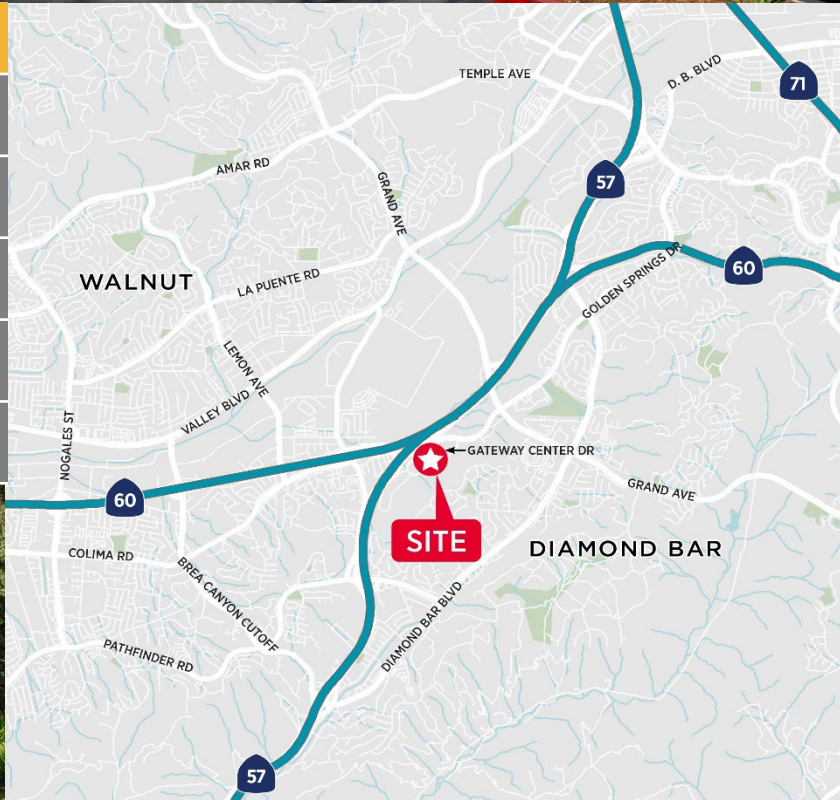
# GATEWAY CORPORATE CENTER

21680 Gateway Center Drive | Diamond Bar | CA



LEASE RATE: \$3.15 FSG

SUITE	SQ. FT.	AVAILABLE
135	3,186	Now
160	2,191	Now
230	2,596	Now
330	1,508	8/1/25



For more information, please contact:

#### SEAN KERN

909.942.4691  
sean.kern@cushwake.com  
Lic. #01377294

#### RYAN RUSSELL

909.942.4697  
ryan.russell@cushwake.com  
Lic. #01505274

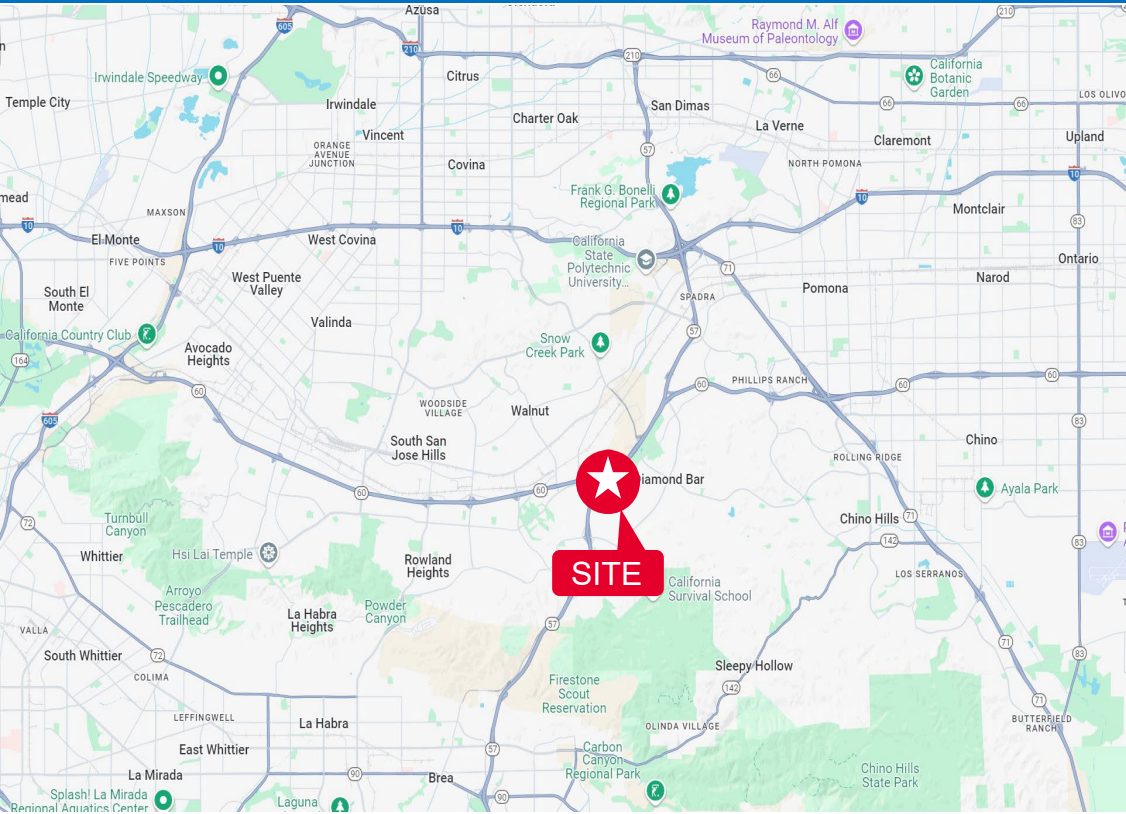
#### RYAN CAMPBELL

909.348.0606  
rcampbell@naicapital.com  
Lic. #01341826



# GATEWAY CORPORATE CENTER

21680 Gateway Center Dr | Diamond Bar | California



## FEATURES:

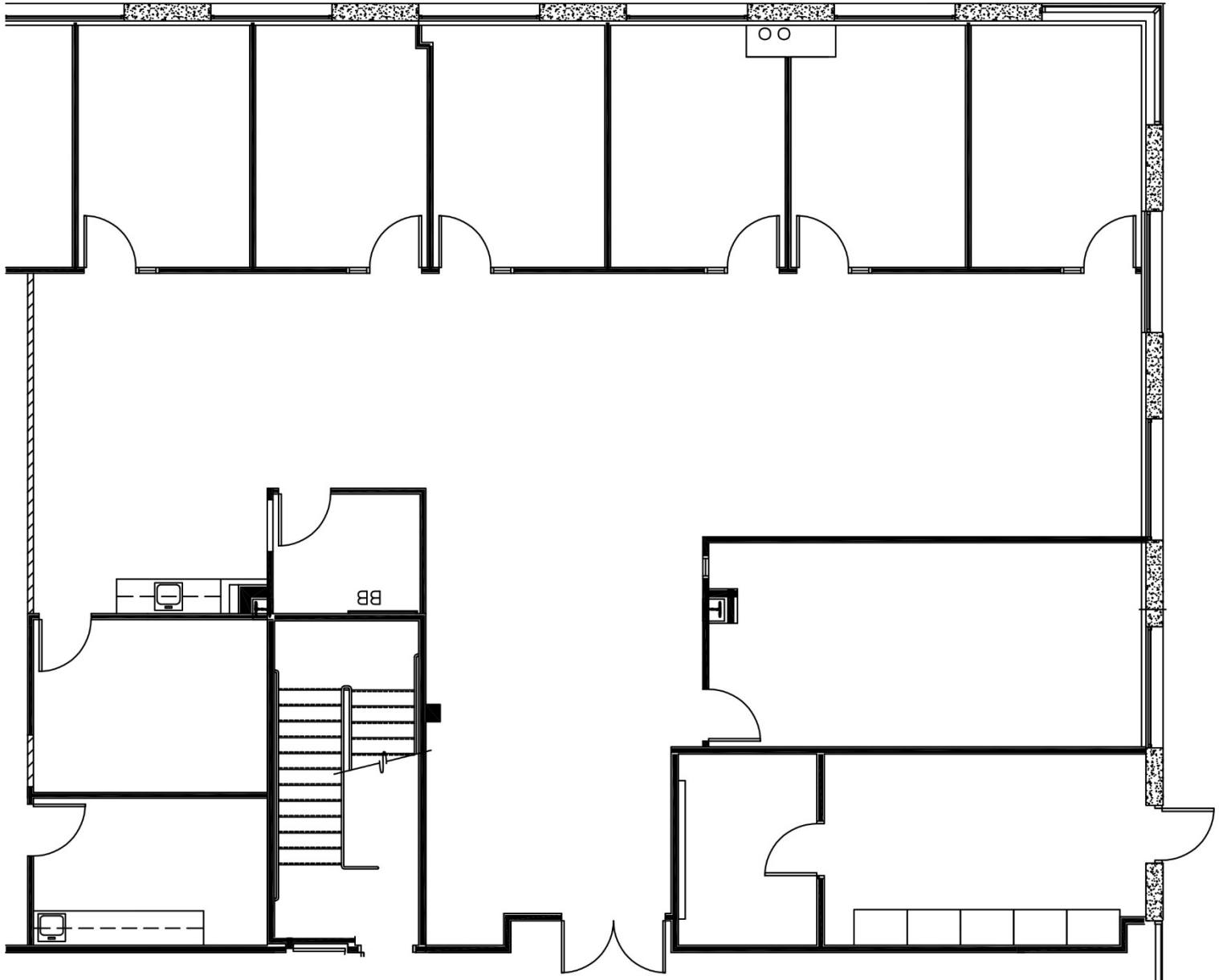
- Located minutes from the 57, 10, 60 & 71 Freeways
- Centrally located – Gateway to four counties
- Close to Ontario International Airport, hotels, restaurants, business services and retail
- Campus-like environment
- Professionally managed
- 24-Hour access
- Outdoor seating
- 5/1000 parking
- On-site deli



# GATEWAY CORPORATE CENTER

21680 Gateway Center Dr | Diamond Bar | California

Suite 135 | 3,186 SF | 6 private offices, 1 conference room, kitchen, Storage room, IT room, open office area



For more information, please contact:

**SEAN KERN**

909.942.4691  
sean.kern@cushwake.com  
Lic. #01377294

**RYAN RUSSELL**

909.942.4697  
ryan.russell@cushwake.com  
Lic. #01505274

**RYAN CAMPBELL**

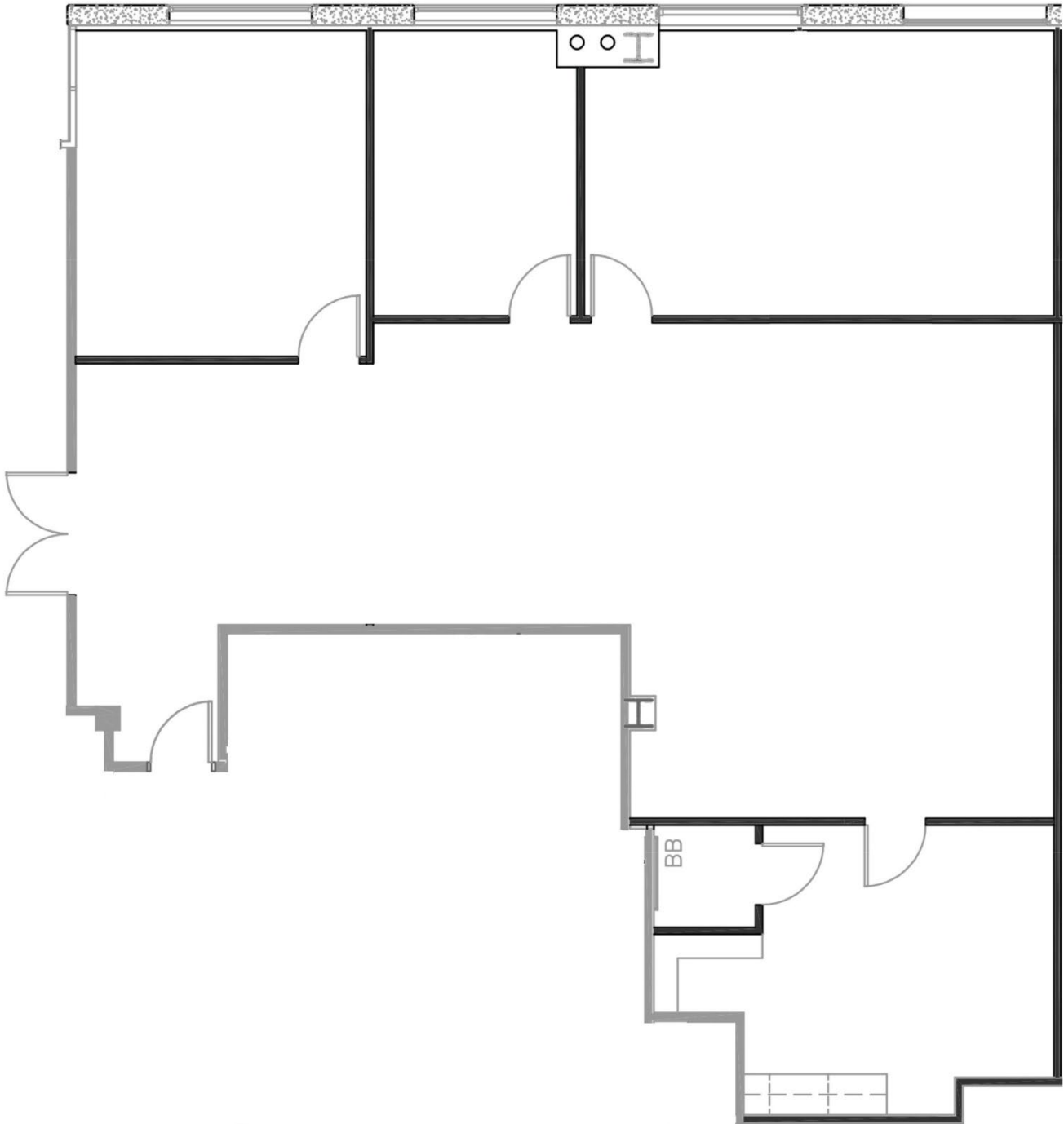
909.348.0606  
rcampbell@naicapital.com  
Lic. #01341826



# GATEWAY CORPORATE CENTER

21680 Gateway Center Dr | Diamond Bar | California

Suite 160 | 2,191 SF | Double door entrance, 1 conference room, 2 offices, kitchen and open work area



For more information, please contact:

**SEAN KERN**

909.942.4691  
sean.kern@cushwake.com  
Lic. #01377294

**RYAN RUSSELL**

909.942.4697  
ryan.russell@cushwake.com  
Lic. #01505274

**RYAN CAMPBELL**

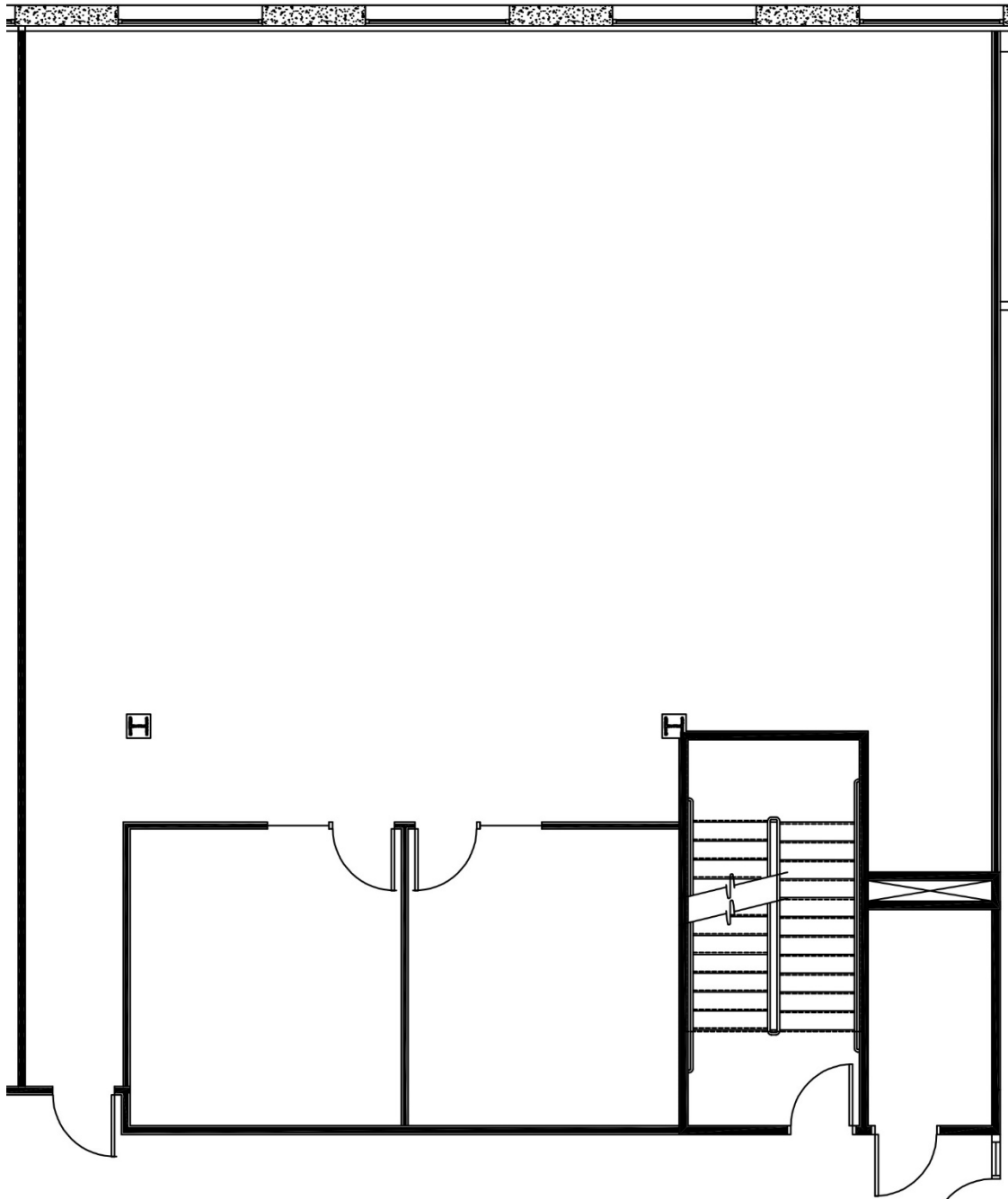
909.348.0606  
rcampbell@naicapital.com  
Lic. #01341826



# GATEWAY CORPORATE CENTER

21680 Gateway Center Dr | Diamond Bar | California

Suite 230 | 2,596 SF | 1 office, 1 conference room, storage room, open office area



For more information, please contact:

**SEAN KERN**

909.942.4691  
sean.kern@cushwake.com  
Lic. #01377294

**RYAN RUSSELL**

909.942.4697  
ryan.russell@cushwake.com  
Lic. #01505274

**RYAN CAMPBELL**

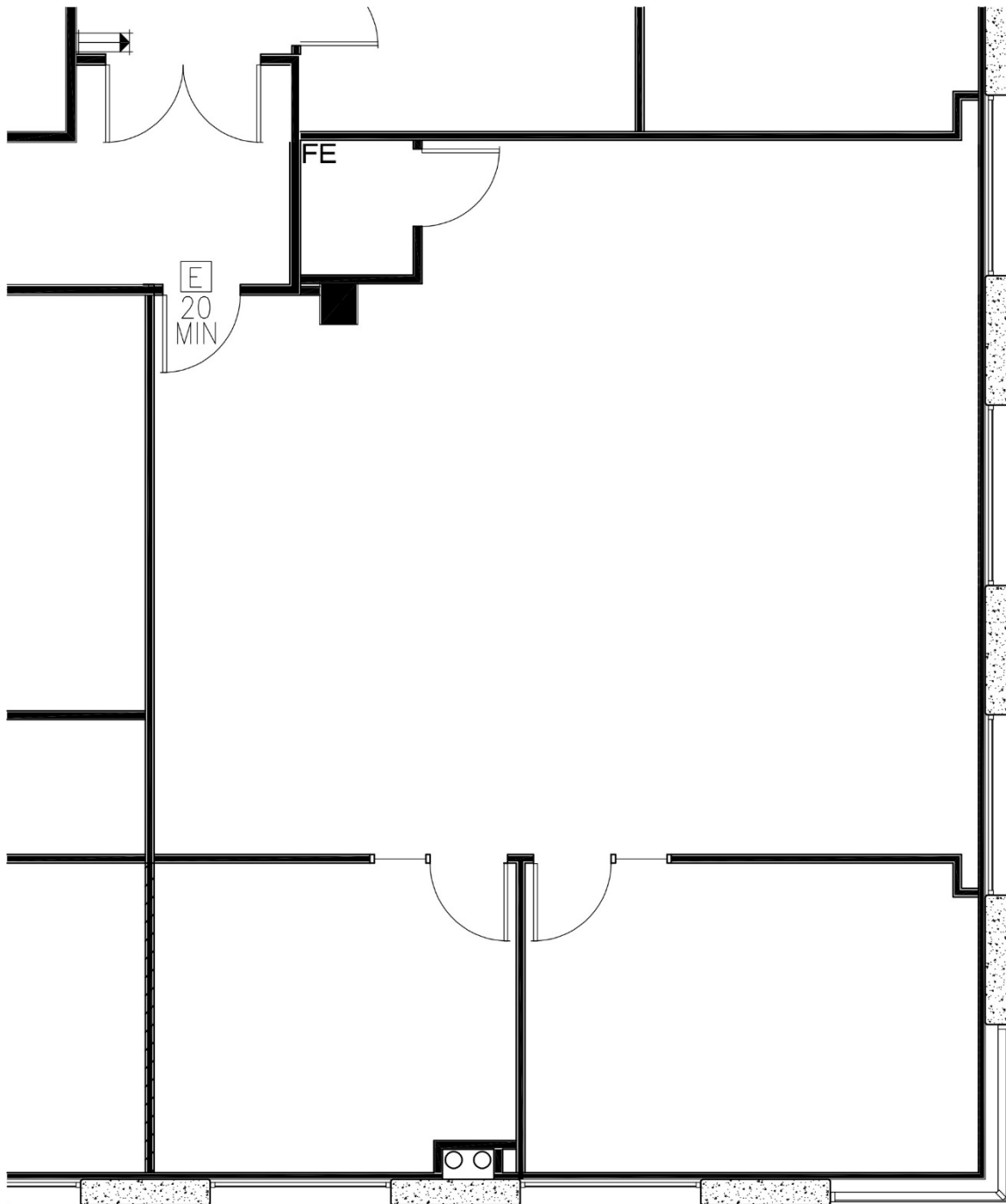
909.348.0606  
rcampbell@naicapital.com  
Lic. #01341826



# GATEWAY CORPORATE CENTER

21680 Gateway Center Dr | Diamond Bar | California

Suite 330 | 1,508 SF | 2 offices, open area



For more information, please contact:

**SEAN KERN**  
909.942.4691  
sean.kern@cushwake.com  
Lic. #01377294

**RYAN RUSSELL**  
909.942.4697  
ryan.russell@cushwake.com  
Lic. #01505274

**RYAN CAMPBELL**  
909.348.0606  
rcampbell@naicapital.com  
Lic. #01341826

