

PLYMOUTH PONDS VI

MN
MPLS

17200 Medina Rd
Plymouth, MN



FOR LEASE

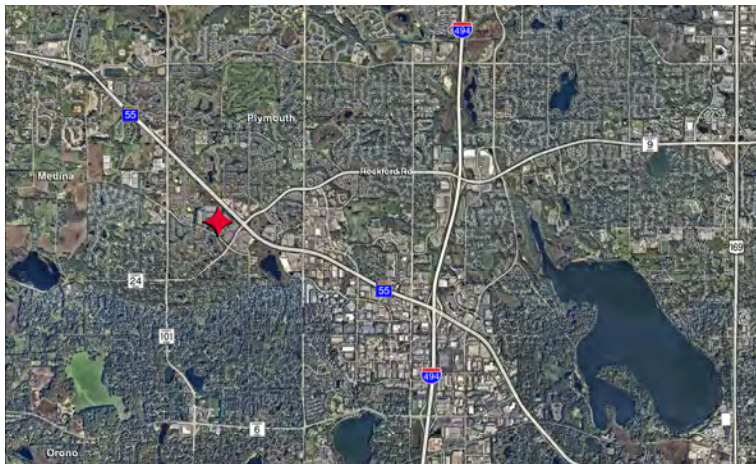
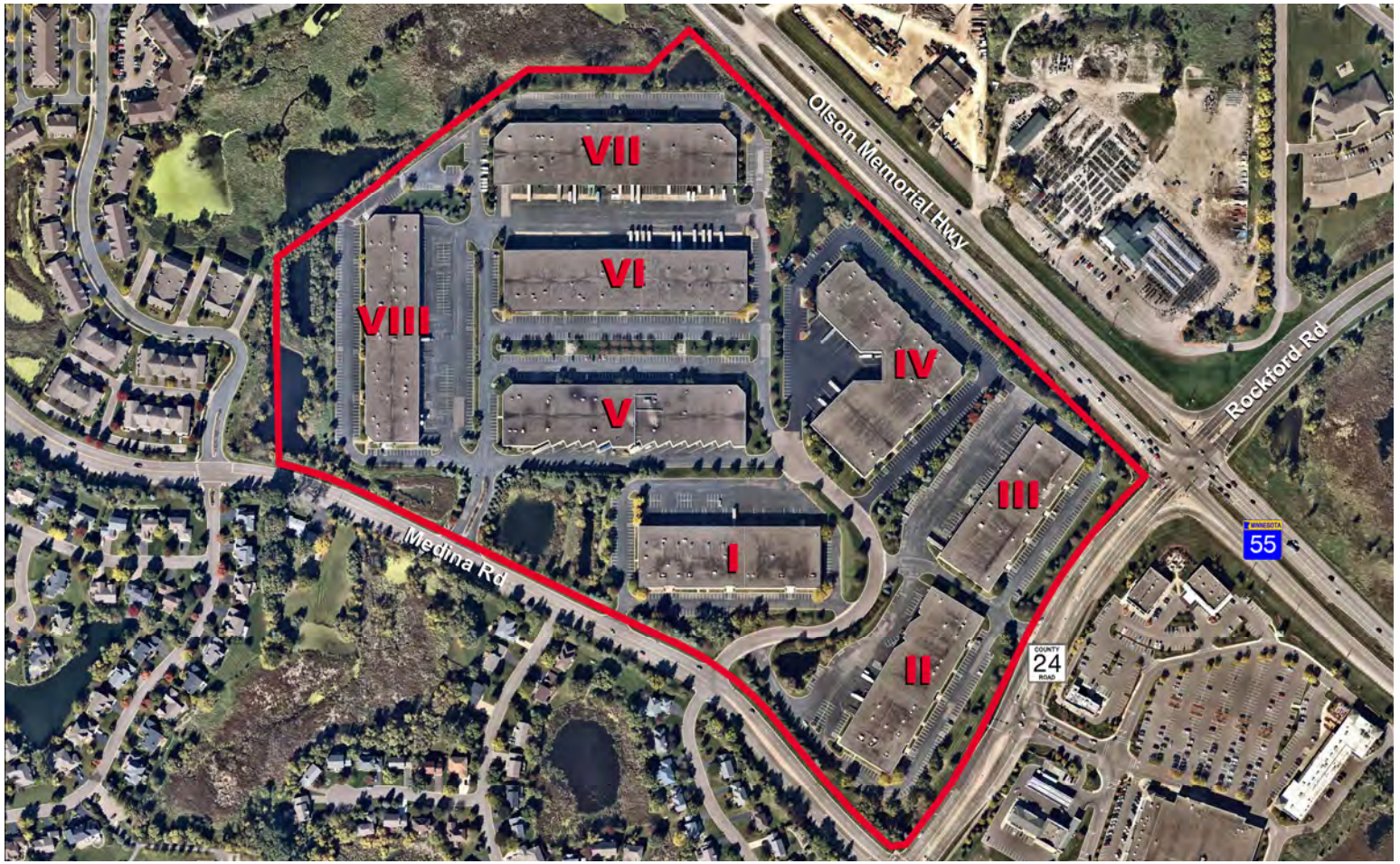
50,940 SF

UNITS 500, 600 & 700



LEASED BY





PROPERTY HIGHLIGHTS

- Convenient location near Plymouth City Center and retail
- Quick access to Highways 55 & I-494
- Park-like setting
- Master planned Business Park consisting of eight 24' clear height buildings totaling more than 700,000 SF

Building Size 101,906 SF

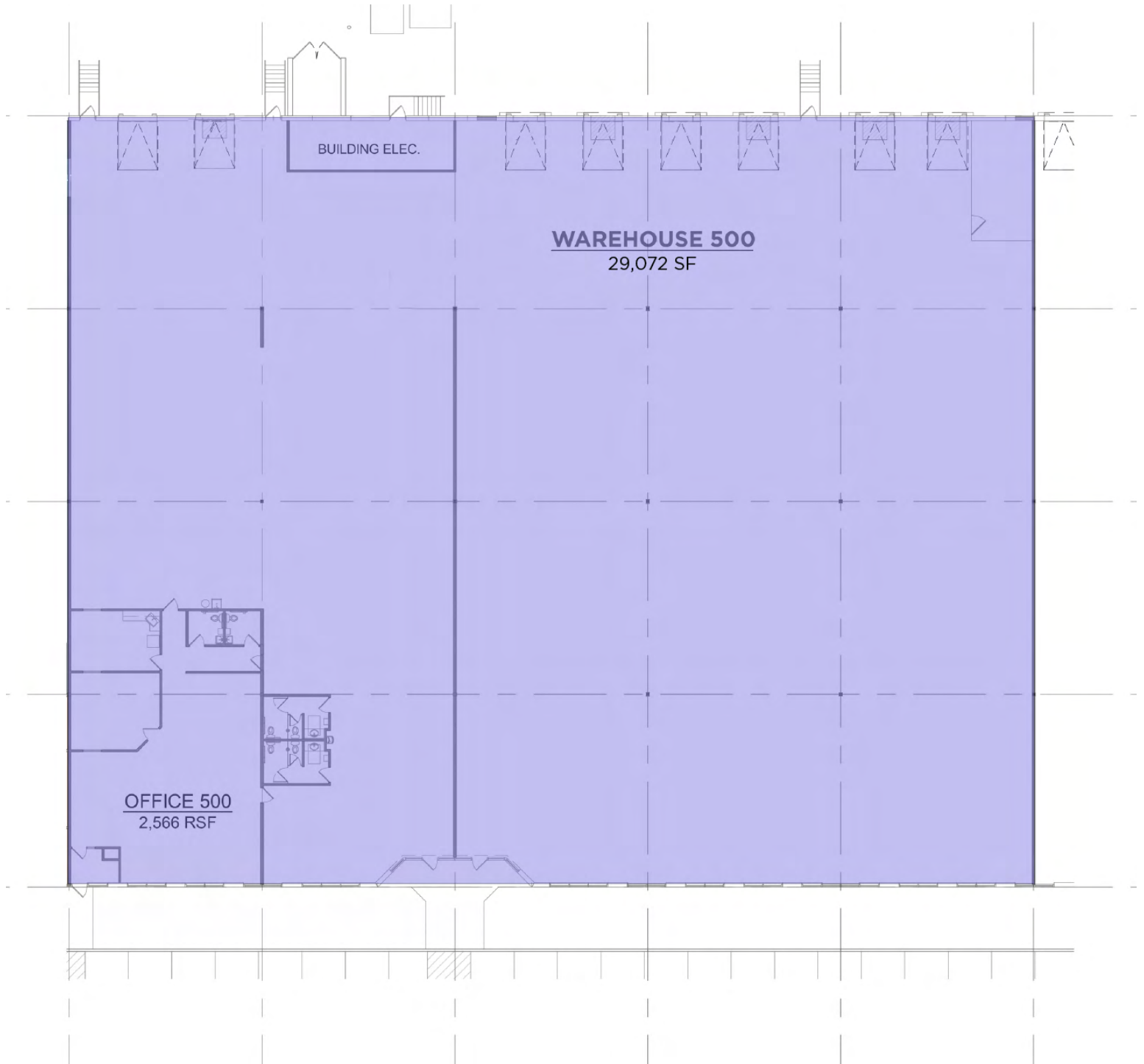
Available
 Unit 500: 31,638 SF
 Unit 600: 12,833 SF
 Unit 700: 6,469 SF
 Total: 50,940 SF

Year Built 2000

Clear Height 24'

Lease Rate Negotiable

2025 Tax & CAM \$5.29 PSF



→ Unit 500

→ 2,566 SF Office
29,072 SF Warehouse
31,638 SF Total

→ 8 Dock Doors



→ Unit 600

→ 3,575 SF Office
9,258 SF Warehouse
12,833 SF Total

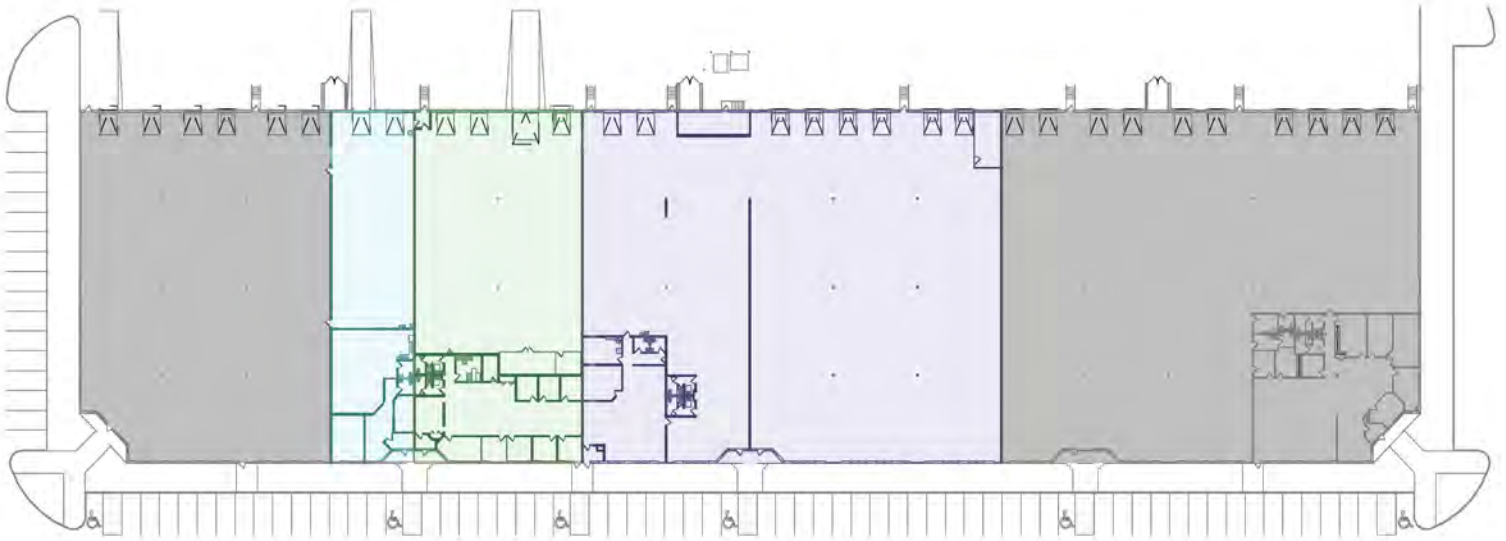
→ 3 Dock Doors
1 Drive-In Door



→ Unit 700

→ 1,211 SF Office
5,258 SF Warehouse
 6,469 SF Total

→ 1 Dock Door
 1 Drive-In Door



→ Units 500, 600 & 700

→ 7,620 SF Office
43,320 SF Warehouse
 50,940 SF Total

→ 12 Dock Doors
 2 Drive-In Doors

CONTACT INFORMATION

17200 Medina Rd
Plymouth, MN

Jason Meyer

Executive Director
952 994 8918

jason.j.meyer@cushwake.com

Brent Masica

Executive Managing Director
952 893 8231

brent.masica@cushwake.com

Judd Fenlon

Brokerage Services
612 231 9606

Judd.Fenlon@cushwake.com

This is not an offer or acceptance of an offer to lease space. A lease will only be offered or made in a written agreement signed by landlord. No representation or warranty of any kind is made by landlord unless set forth in a written definitive lease executed by the landlord.



LEASED BY

