

LEASE

953 LANE AVENUE SOUTH

Jacksonville, FL 32205



PROPERTY DESCRIPTION

This rare leasing opportunity combines a strategic location with adaptable space, making it perfect for a wide range of medical and professional uses. Don't miss out on securing this prime West Jacksonville property for your business!

PROPERTY HIGHLIGHTS

- Full Medical Build Out!
- Available Immediately!
- Parking Available!

OFFERING SUMMARY

Lease Rate:	\$18.00 SF/yr (NNN)
Available SF:	2,592 SF

DEMOGRAPHICS	0.3 MILES	0.5 MILES	1 MILE
Total Households	93	564	2,995
Total Population	230	1,399	7,673
Average HH Income	\$64,303	\$63,215	\$58,952

Eric Maimo
904 537 6443



**COLDWELL BANKER
COMMERCIAL**
PREMIER PROPERTIES

LEASE

953 LANE AVENUE SOUTH

Jacksonville, FL 32205



Eric Maimo
904 537 6443

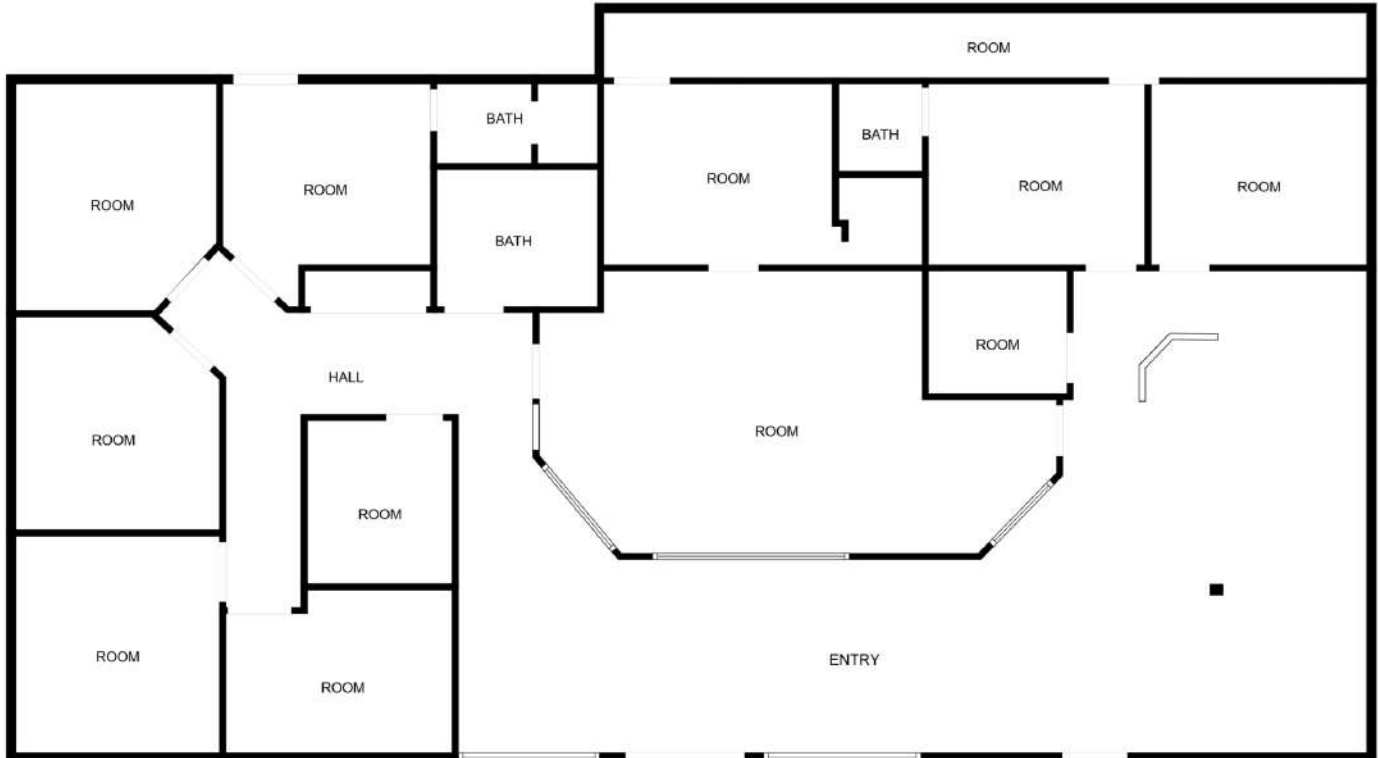


COLDWELL BANKER
COMMERCIAL
PREMIER PROPERTIES

LEASE

953 LANE AVENUE SOUTH

Jacksonville, FL 32205



FLOOR PLAN CREATED BY CUBICASA APP. MEASUREMENTS DEEMED HIGHLY RELIABLE BUT NOT GUARANTEED.

Eric Maimo
904 537 6443

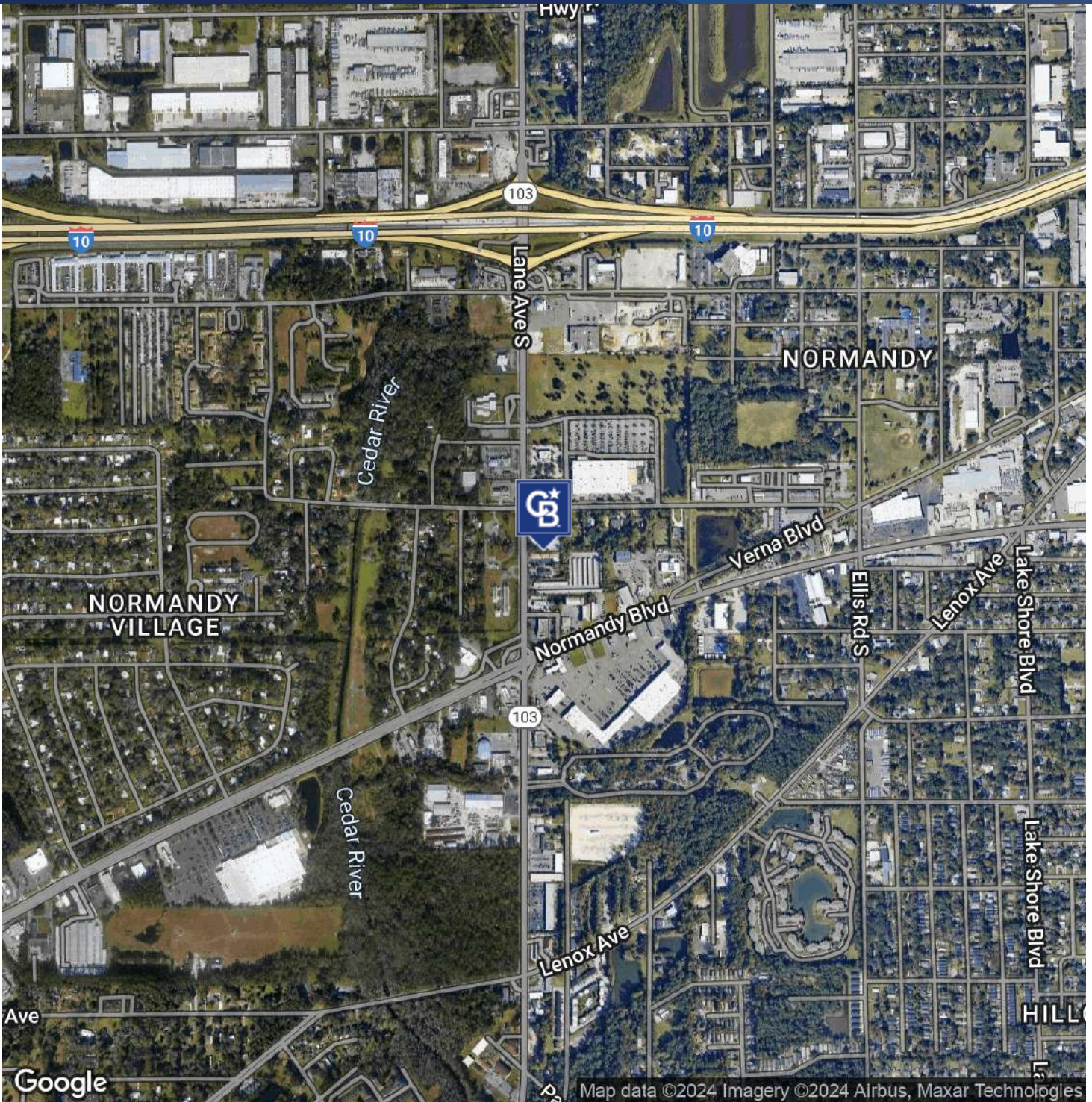


COLDWELL BANKER
COMMERCIAL
PREMIER PROPERTIES

LEASE

953 LANE AVENUE SOUTH

Jacksonville, FL 32205



Eric Maimo
904 537 6443

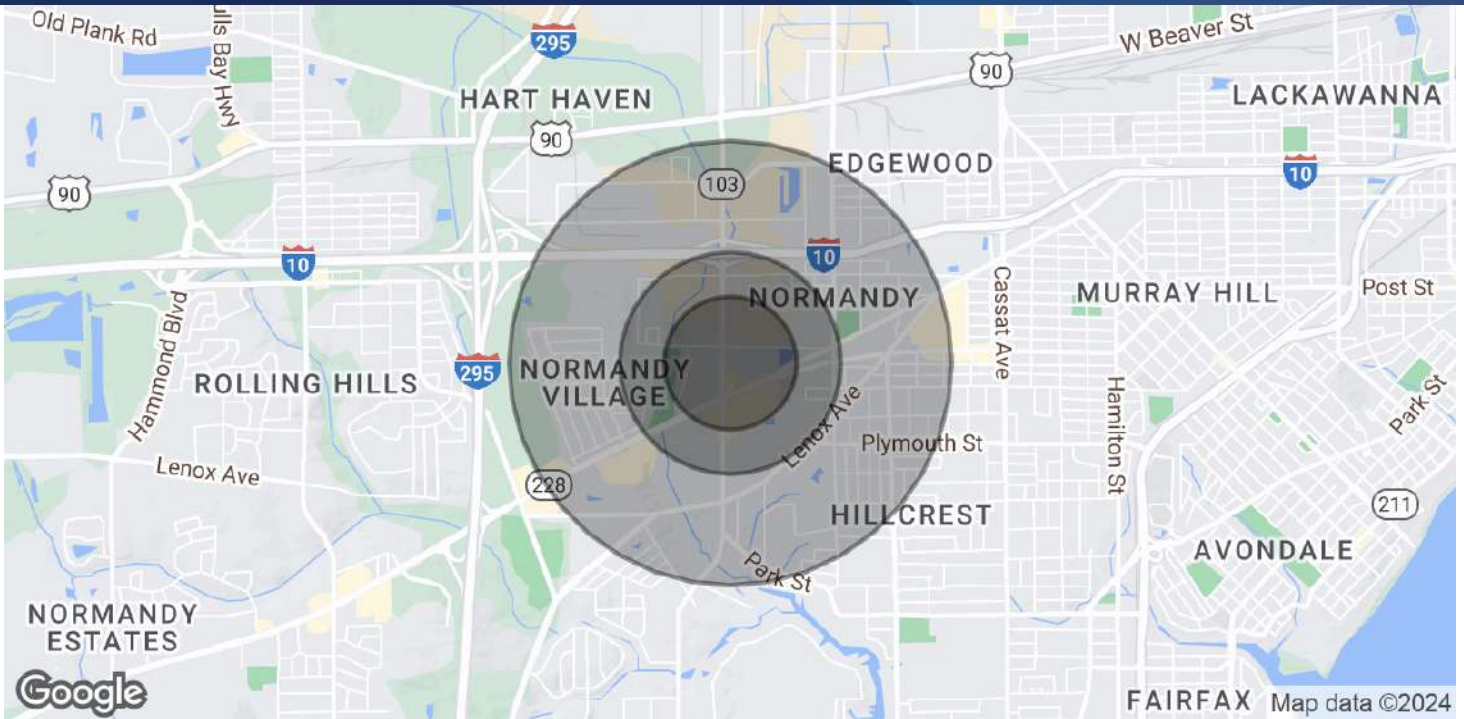


**COLDWELL BANKER
COMMERCIAL**
PREMIER PROPERTIES

LEASE

953 LANE AVENUE SOUTH

Jacksonville, FL 32205



POPULATION

	0.3 MILES	0.5 MILES	1 MILE
Total Population	230	1,399	7,673
Average Age	37	37	37
Average Age (Male)	36	36	35
Average Age (Female)	38	38	37

HOUSEHOLDS & INCOME

	0.3 MILES	0.5 MILES	1 MILE
Total Households	93	564	2,995
# of Persons per HH	2.5	2.5	2.6
Average HH Income	\$64,303	\$63,215	\$58,952
Average House Value	\$154,114	\$161,895	\$188,927

Demographics data derived from AlphaMap

Eric Maimo
904 537 6443



**COLDWELL BANKER
COMMERCIAL**
PREMIER PROPERTIES