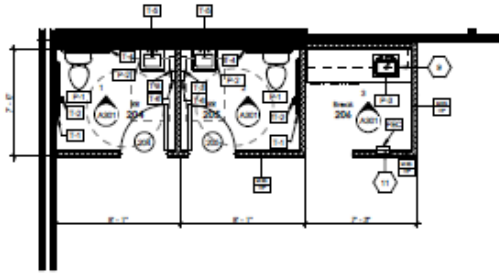
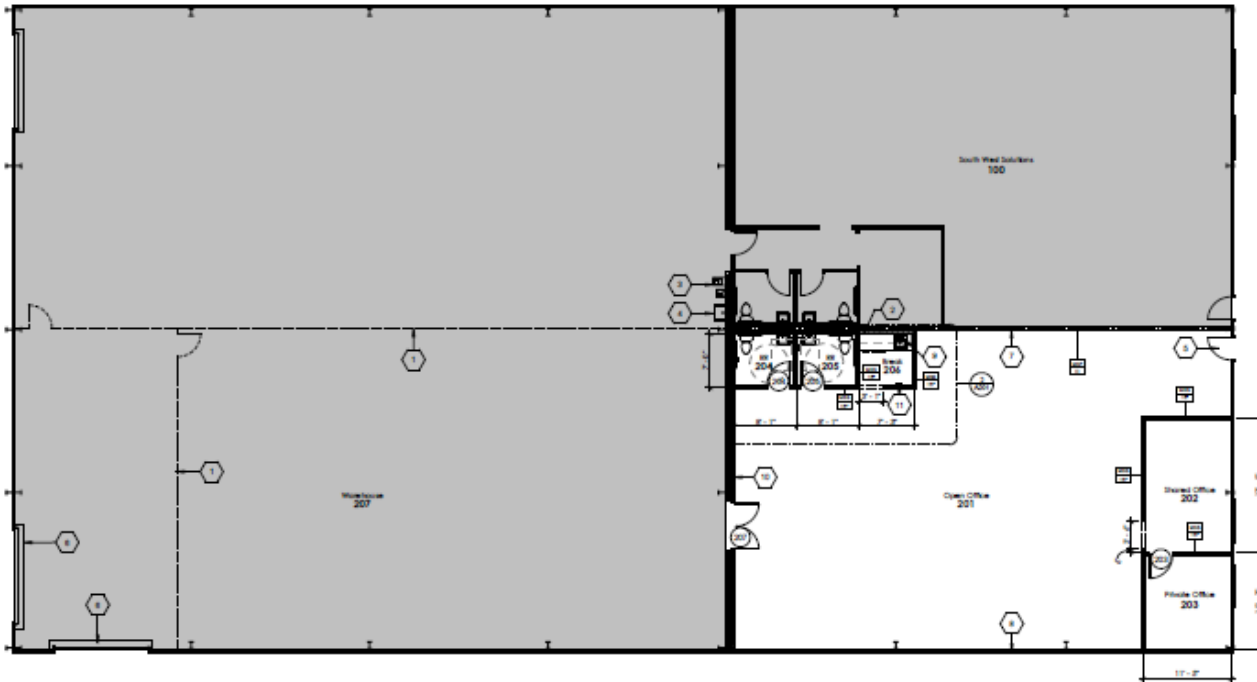


● ● ● ● ●

SOUTHWESTSOLUTIONSGROUP
business efficiency systems



2 **Calout of Level 1 - Construction Plan**



1 **CONSTRUCTION PLAN**

2535-B E. State Hwy 121
Suite 110
Lewisville, TX 75056
(972) 250-1970
(972) 250-2229 fax

6105 Brittmooore Rd.
Houston, TX 77041
(713) 467-4454
(713) 467-4484 fax

2300 Greenhill Dr.
Suite #800
Round Rock, TX 78664
(512) 336-1328
(512) 336-1358 fax

15002 Tradesman Dr.
San Antonio, TX
78249
(210) 558-6988
(210) 691-2238-fax

8049 Bond St
Lenexa, KS 66214
913-345-0289
913-345-9758-fax
913-339-9229-fax

7718 N. Robinson Ave
Suite #A21 & 22
Oklahoma City, OK
73116
(405) 879-3448
(405) 879-3370-fax

9160 Hwy 64
Ste 12-270
Lakeland, TN 38002
901-202-0480
901-202-0488-fax

7285 S Revere Pkwy
Suite 801
Centennial, CO 80112
(303) 741-1600
(972) 250-2229 fax

5601 6th Ave S
Suite 463
Seattle, WA 98108
(425) 354-3311
(972) 250-2229 fax



● ● ● ● ●

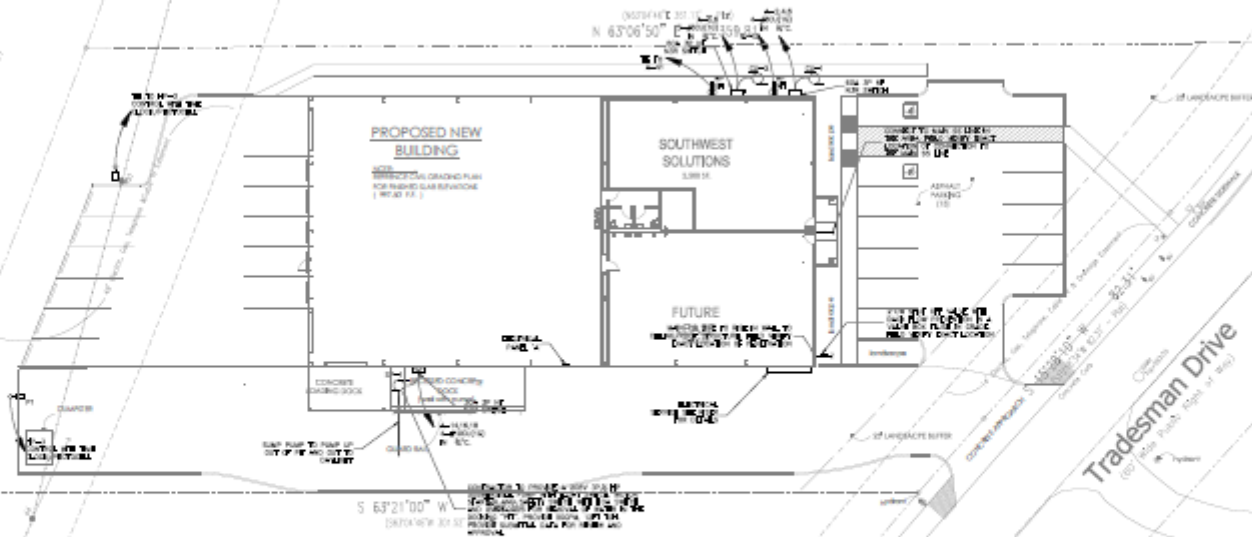
SOUTHWESTSOLUTIONSGROUP
business efficiency systems
SouthwestSolutions.com 800-803-1083



3809 N Division St
Spokane, WA 99207
(509) 315-9806
(972) 250-2229 fax

17200 Chanel Pkwy
Suite 300-304
Little Rock, AR 72223
501-859-0675
501-859-0674-fax

Union Pacific Railroad
(100' Right of Way Right of Way)



Vol. 4 (Traverse 9030, Pages 84-93)
Tras. 148 (Traverse 14800, Page 944)

SITE PLAN
SCALE 1" = 20'-0"



Tradesman Drive
(100' Right of Way Right of Way)