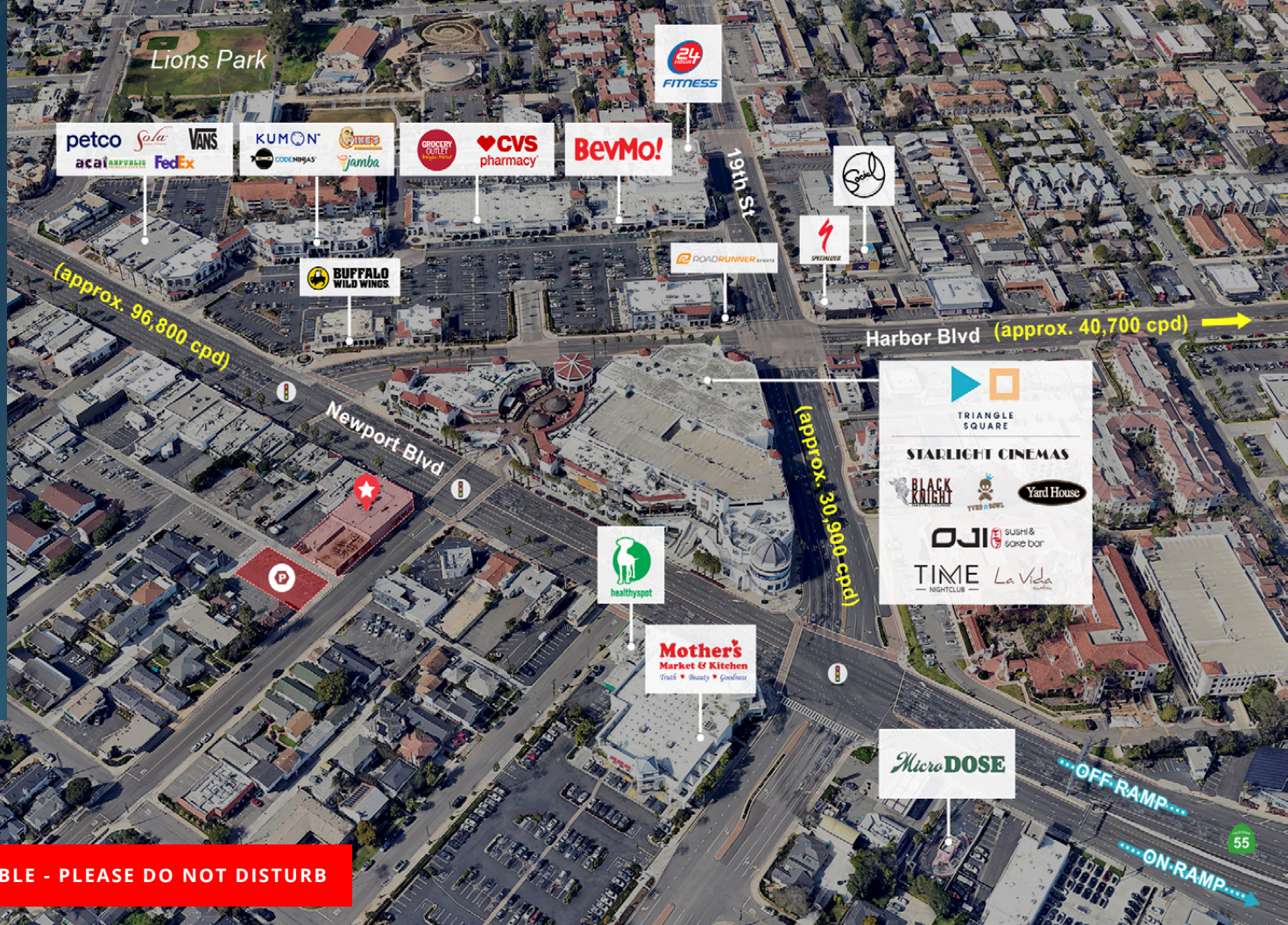


1848 Newport Blvd

Costa Mesa, CA 92627



**AVAILABLE - PLEASE DO NOT DISTURB**

# Iconic freestanding showroom building located at the gateway to Newport Beach/Costa Mesa

**±10,000 SF / Expandable to ±13,200 SF**

## Property Highlights

- Billboard-like signage to a massive traffic count along Newport Blvd
- 26 parking spaces + shared/public parking in the immediate area
- Ideal for showroom uses interested in high visibility + brand building opportunity
- High ceilings + expandable



## For Leasing Information Contact:

**949 698 1111**

TERRISON QUINN | terrison.quinn@srsre.com  
TONY VUONA | tony.vuona@srsre.com  
610 Newport Beach, Ste 1500, Newport Beach, CA 92660

## TRAFFIC COUNTS

Newport Boulevard	approximately 96,800 cpd
Harbor Boulevard	approximately 40,700 cpd
19th Street	approximately 30,900 cpd
CA-55 Freeway	approximately 105,400 cpd
Source: Costar	

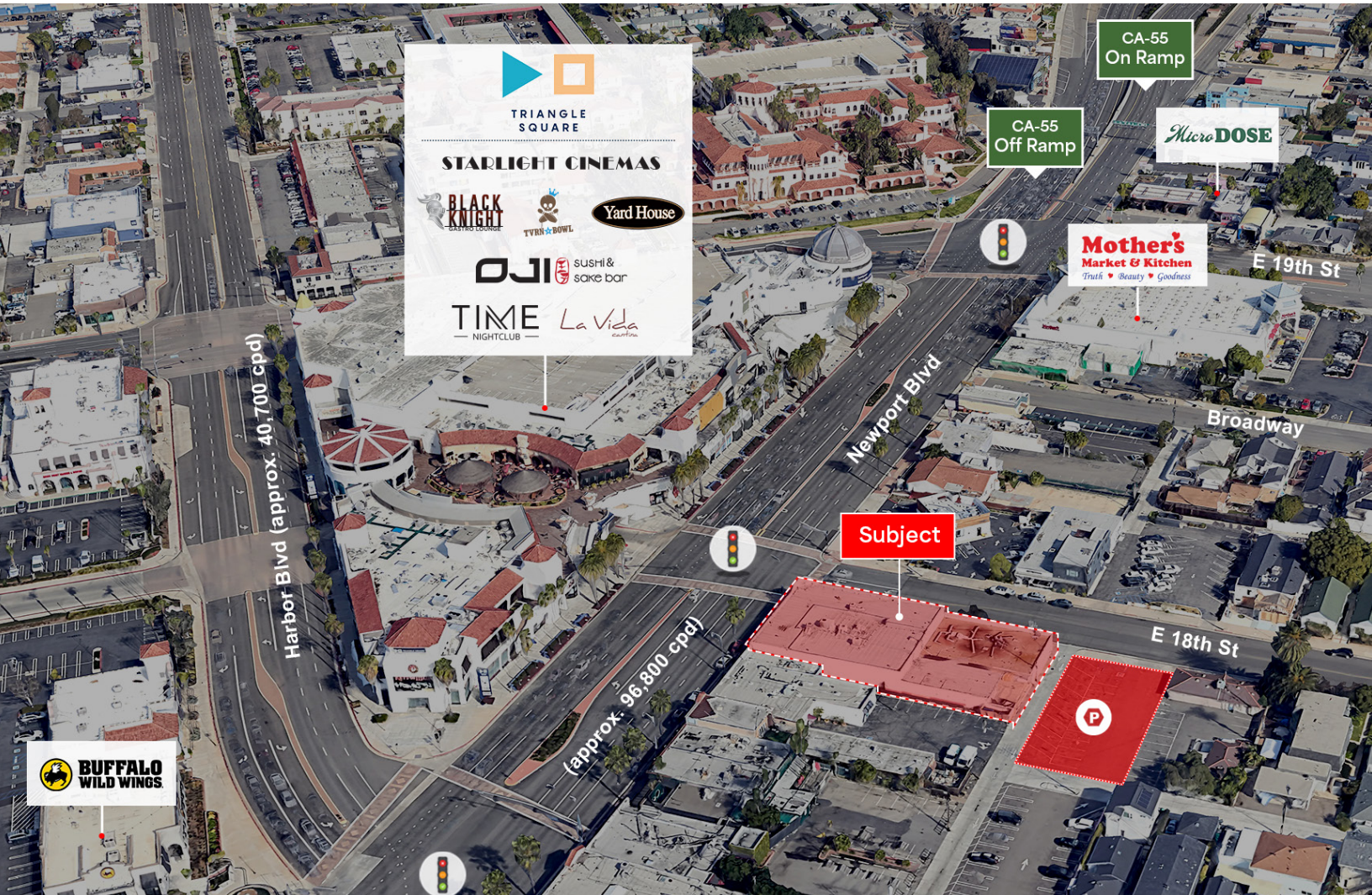
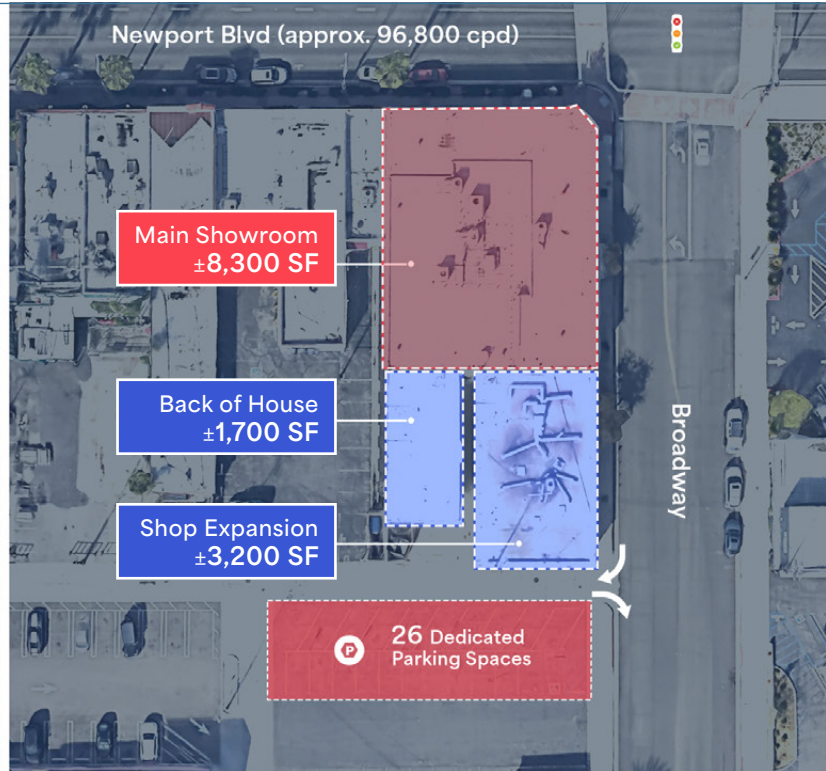
This information contained herein was obtained from sources deemed to be reliable; however SRS Real Estate Partners makes no guarantees, warranties or representations as to the completeness or accuracy thereof.

±10,000 SF / EXPANDABLE TO ±13,200K SF | FOR LEASE

# Site Photos



1848 Newport Blvd | Costa Mesa, CA 92627



This information contained herein was obtained from sources deemed to be reliable, however SRS Real Estate Partners makes no guarantees, warranties or representations as to the completeness or accuracy thereof.

±10,000 SF / EXPANDABLE TO ±13,200K SF | FOR LEASE

# Surrounding Trade Aerial



1848 Newport Blvd | Costa Mesa, CA 92627

For Leasing Information:

**949 698 1111**

**TERRISON QUINN**  
terrison.quinn@srsre.com  
CA License No. 01789657

**TONY VUONA**  
tony.vuona@srsre.com  
CA License No. 02046746



**CA-55**  
APPROXIMATELY  
105,400 CPD

TRIANGLE SQUARE

24 FITNESS

TVRN BOWL

Sevilla RESTAURANT & TRAP BAR

TIME NIGHTCLUB

Yard House

24 FITNESS

CVS pharmacy

GROCERY OUTLET

BevMo!

BUFFALO WILD WINGS

DMV

NEAT

Auto Zone

IN-N-OUT

Smart & Final

Smart & Final

HENNESSEY'S TAVERNS

TOAST KITCHEN & BAKERY

KABOB REPUBLIC

MicroDOSE

Mother's Market & Kitchen

Site

TRADER JOE'S

PETSMART

Michaels

CRACK SHACK

greenleaf gourmet chopshop

milligram

Jan's

POP PIE CO.

Starbucks

17th St

Superior Ave

CVS pharmacy

VONS

17th St

Ralphs

Pets Coffee & Tea

Playa Mesa

Mendocino Farms

CHIPOTLE

BREAK OUT

PERSPIRE

hoag

TARGET

SPROUTS FARMER MARKET

RITE AID

STAPLES

ULTA

exer URGENT CARE

burger lounge

Cafe Rio

d-LASER

P-Mobile

VIBE

QUE VIDA

SHAKE SHACK

TABUSHABU

OAK & COAL

FAST 5

Site

1848 Newport Blvd  
Costa Mesa, CA 92627

The information presented was obtained from sources deemed reliable; however SRS Real Estate Partners does not guarantee its completeness or accuracy.