

FOR LEASE

B BALTIMORE COUNTY, MD

MCDONOUGH CROSSROADS

10 CROSSROADS DRIVE AND 5 PARK CENTER COURT | OWINGS MILLS, MD 21117



PROPERTY HIGHLIGHTS:

- ▶ CLASS A OFFICE SPACE
- ▶ PREMIERE OFFICE/MEDICAL PARK
- ▶ 1 MILE FROM I-695
- ▶ INDIVIDUAL HVAC SYSTEM
- ▶ FREE PARKING
- ▶ CENTRALLY LOCATED IN REISTERSTOWN ROAD CORRIDOR
- ▶ LINWOODS LOCATED IN ADJACENT BUILDING
- ▶ TWO MILES FROM METRO CENTRE AT OWINGS MILLS

DAVID S. BROWN
ENTERPRISES, LTD.

KEVIN KEANE | SVP, OFFICE LEASING
☎ 410.581.2519 ✉ KEVIN@DAVIDSBROWN.COM

BRENT MANGUM | VP, OFFICE LEASING
☎ 410.581.2518 ✉ BRENT@DAVIDSBROWN.COM

NOAH ADLER | LEASING ASSOCIATE
☎ 410.581.2510 ✉ NADLER@DAVIDSBROWN.COM

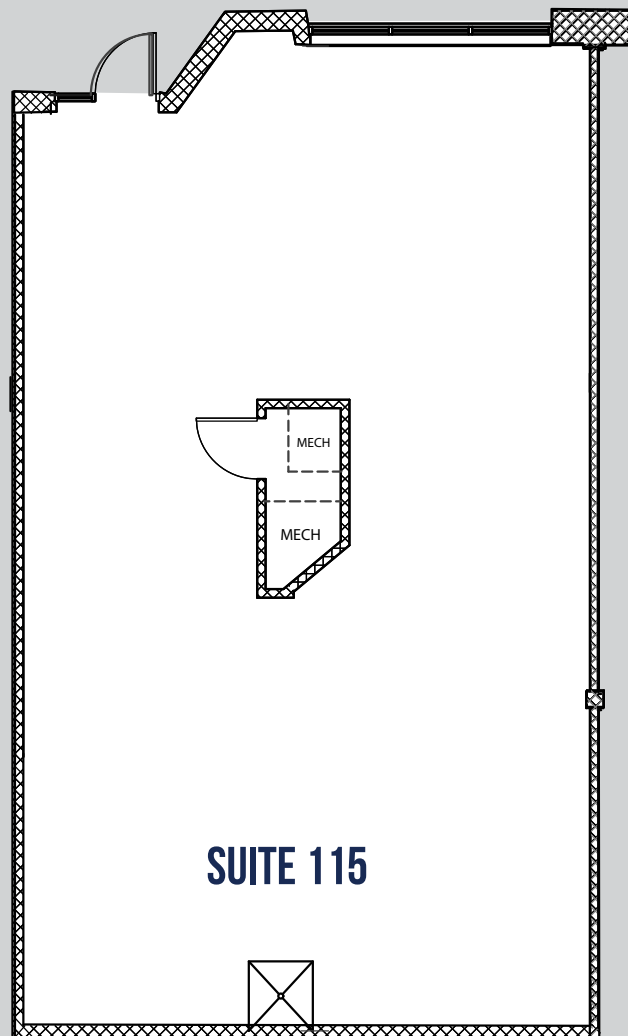
DAVID S. BROWN ENTERPRISES | 100 PAINTERS MILL ROAD, OWINGS MILLS, MD 21117 | 410.581.2520 | WWW.DAVIDSBROWN.COM |    

FOR LEASE

B BALTIMORE COUNTY, MD

MCDONOGH CROSSROADS

10 CROSSROADS DRIVE AND 5 PARK CENTER COURT | OWINGS MILLS, MD 21117



AVAILABLE

► SUITE 115: 1,331 SF

10 CROSSROADS DRIVE

FOR LEASE

B BALTIMORE COUNTY, MD

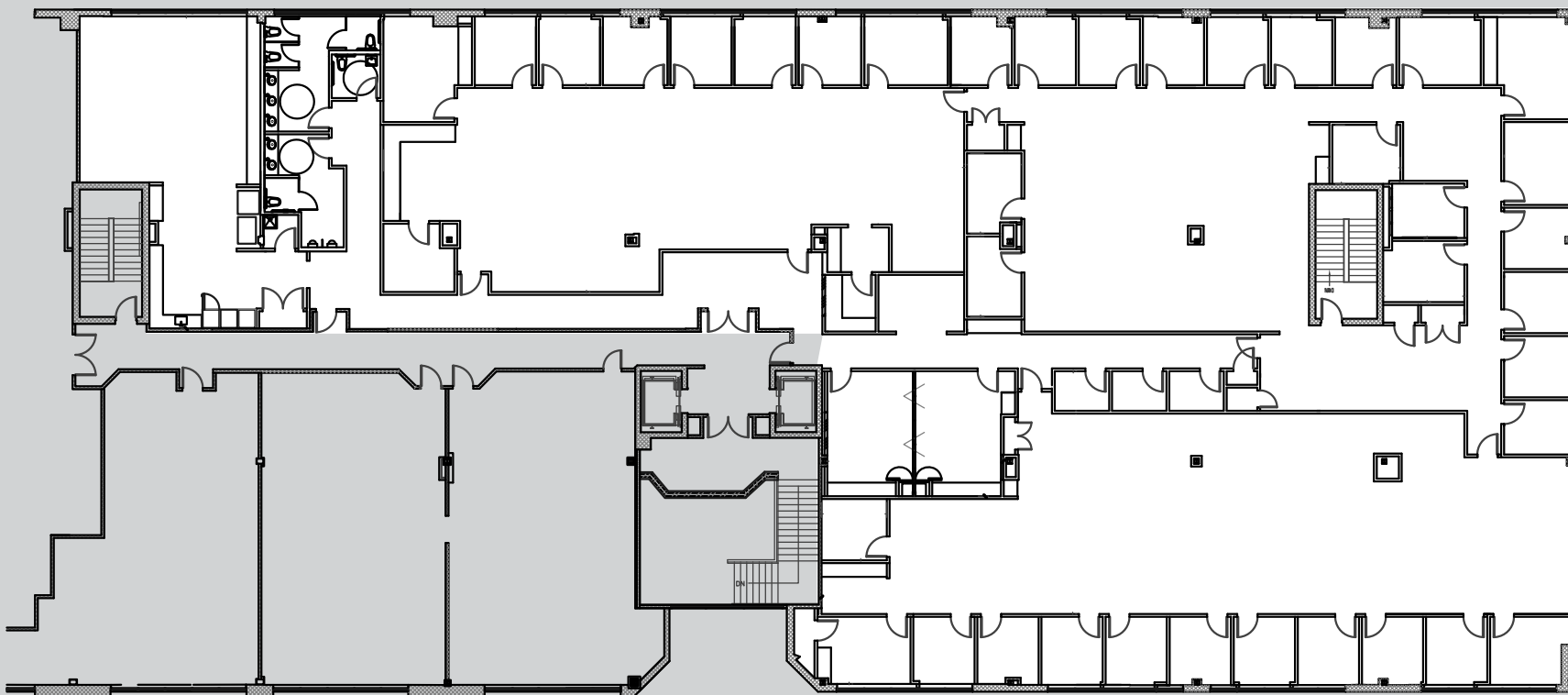
MCDONOGH CROSSROADS

10 CROSSROADS DRIVE AND 5 PARK CENTER COURT | OWINGS MILLS, MD 21117

10 CROSSROADS DRIVE

AVAILABLE

► SUITE 204-208: 16,045 SF



DAVID S. BROWN
ENTERPRISES, LTD.

KEVIN KEANE | SVP, OFFICE LEASING
☎ 410.581.2519 ✉ KEVIN@DAVIDSBROWN.COM

BRENT MANGUM | VP, OFFICE LEASING
☎ 410.581.2518 ✉ BRENT@DAVIDSBROWN.COM

NOAH ADLER | LEASING ASSOCIATE
☎ 410.581.2510 ✉ NADLER@DAVIDSBROWN.COM

DAVID S. BROWN ENTERPRISES | 100 PAINTERS MILL ROAD, OWINGS MILLS, MD 21117 | 410.581.2520 | WWW.DAVIDSBROWN.COM |    

FOR LEASE

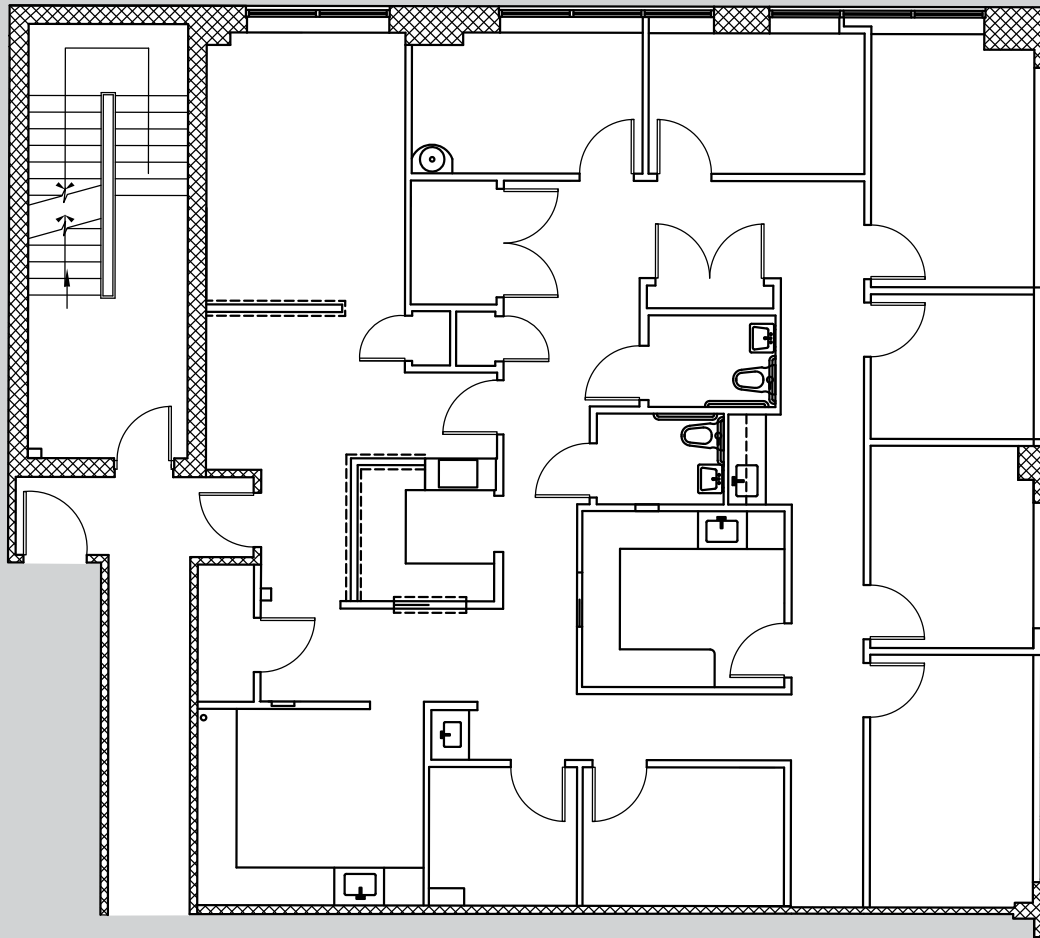
B BALTIMORE COUNTY, MD

MCDONOUGH CROSSROADS

10 CROSSROADS DRIVE AND 5 PARK CENTER COURT | OWINGS MILLS, MD 21117

AVAILABLE

► SUITE 203: 2,370 SF



5 PARK CENTER COURT

VIRTUAL TOUR ►

DAVID S. BROWN
ENTERPRISES, LTD.

KEVIN KEANE | SVP, OFFICE LEASING
☎ 410.581.2519 ✉ KEVIN@DAVIDSBROWN.COM

BRENT MANGUM | VP, OFFICE LEASING
☎ 410.581.2518 ✉ BRENT@DAVIDSBROWN.COM

NOAH ADLER | LEASING ASSOCIATE
☎ 410.581.2510 ✉ NADLER@DAVIDSBROWN.COM

DAVID S. BROWN ENTERPRISES | 100 PAINTERS MILL ROAD, OWINGS MILLS, MD 21117 | 410.581.2520 | WWW.DAVIDSBROWN.COM |    

MCDONOGH CROSSROADS

10 CROSSROADS DRIVE AND 5 PARK CENTER COURT | OWINGS MILLS, MD 21117

MAP

NEARBY AMENITIES:

- Lenny's Deli
- Ruth's Chris
- Linwood's
- Wegmans
- Panera

