

Medical Office | For Lease

CBRE

2623 Park Avenue

4,246 RSF Available Now

2623 Park Avenue
Petersburg, Virginia 23805



For Lease

4,246

Total RSF Available

B-2

General Commercial Zoning

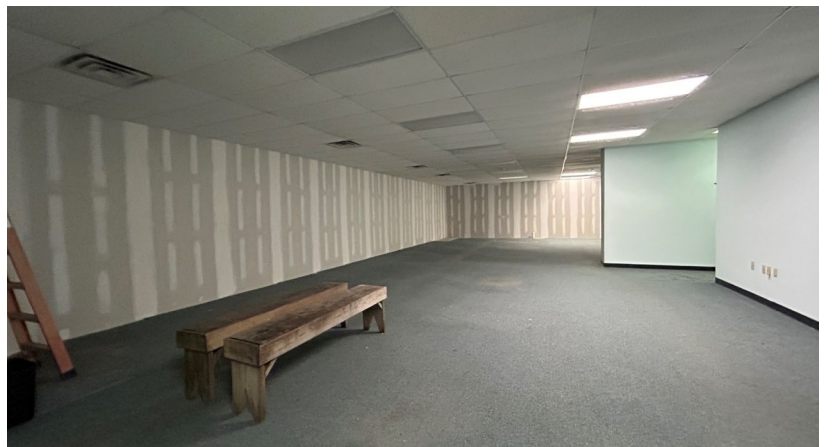
\$22/SF

Full Service Rental Rate



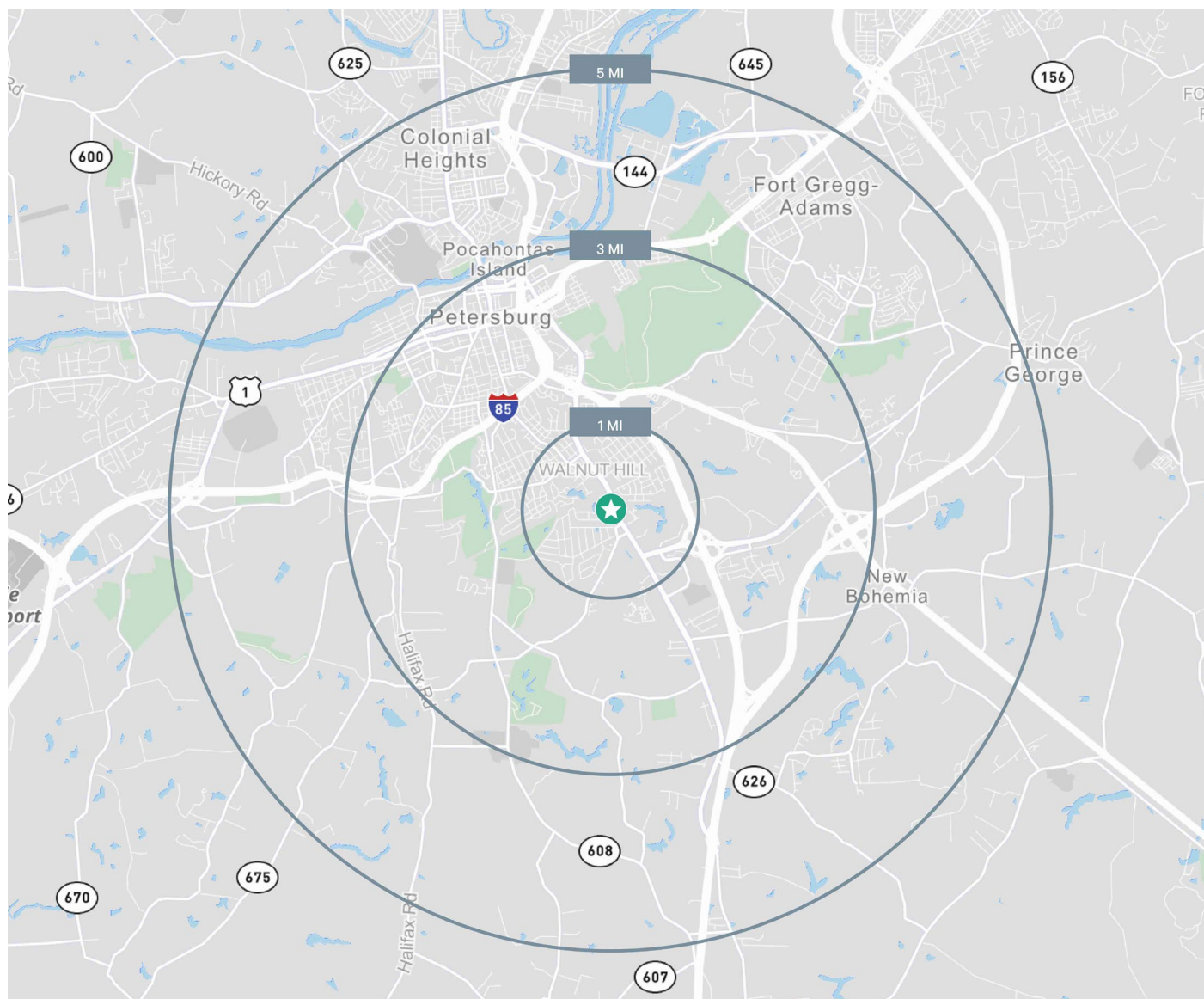
Property Details

- + Single-story office building located off S. Crater Road (Route 301)
- + 4,246 RSF medical office space available
- + Office layout features 7 offices, an open area, and a shared staff bathroom
- + Zoned B-2 (General Commercial)
- + 4.64:1,000 SF parking ratio
- + For Lease: \$22.00/SF, Full Service



Floor Plan





Contact Us

Eric Williford, SIOR
First Vice President
+1 804 401 4003
eric.williford@cbre.com

Andrew Ferguson
Senior Vice President
+1 804 401 4004
andrew.ferguson@cbre.com

Regina Nguyen
Associate
+1 804 201 2016
regina.nguyen@cbre.com

© 2026 CBRE, Inc. All rights reserved. This information has been obtained from sources believed reliable but has not been verified for accuracy or completeness. CBRE, Inc. makes no guarantee, representation or warranty and accepts no responsibility or liability as to the accuracy, completeness, or reliability of the information contained herein. You should conduct a careful, independent investigation of the property and verify all information. Any reliance on this information is solely at your own risk. CBRE and the CBRE logo are service marks of CBRE, Inc. All other marks displayed on this document are the property of their respective owners, and the use of such marks does not imply any affiliation with or endorsement of CBRE. Photos herein are the property of their respective owners. Use of these images without the express written consent of the owner is prohibited.