



Industrial zoned with easy access to major highways

- ±606 acres of industrial zoned land with rail frontage on SW Warfield Road in Martin County, Florida
- Ideal for **large distribution centers and outdoor storage**
- Within reasonable **proximity to Interstate-95 and Florida's Turnpike**
- 40 miles from West Palm Beach and just **132 miles to 12+ people in Orlando**



Possible rail access



Natural gas adjacent



Light & heavy industrial uses



Ideal for large distribution centers and outdoor storage

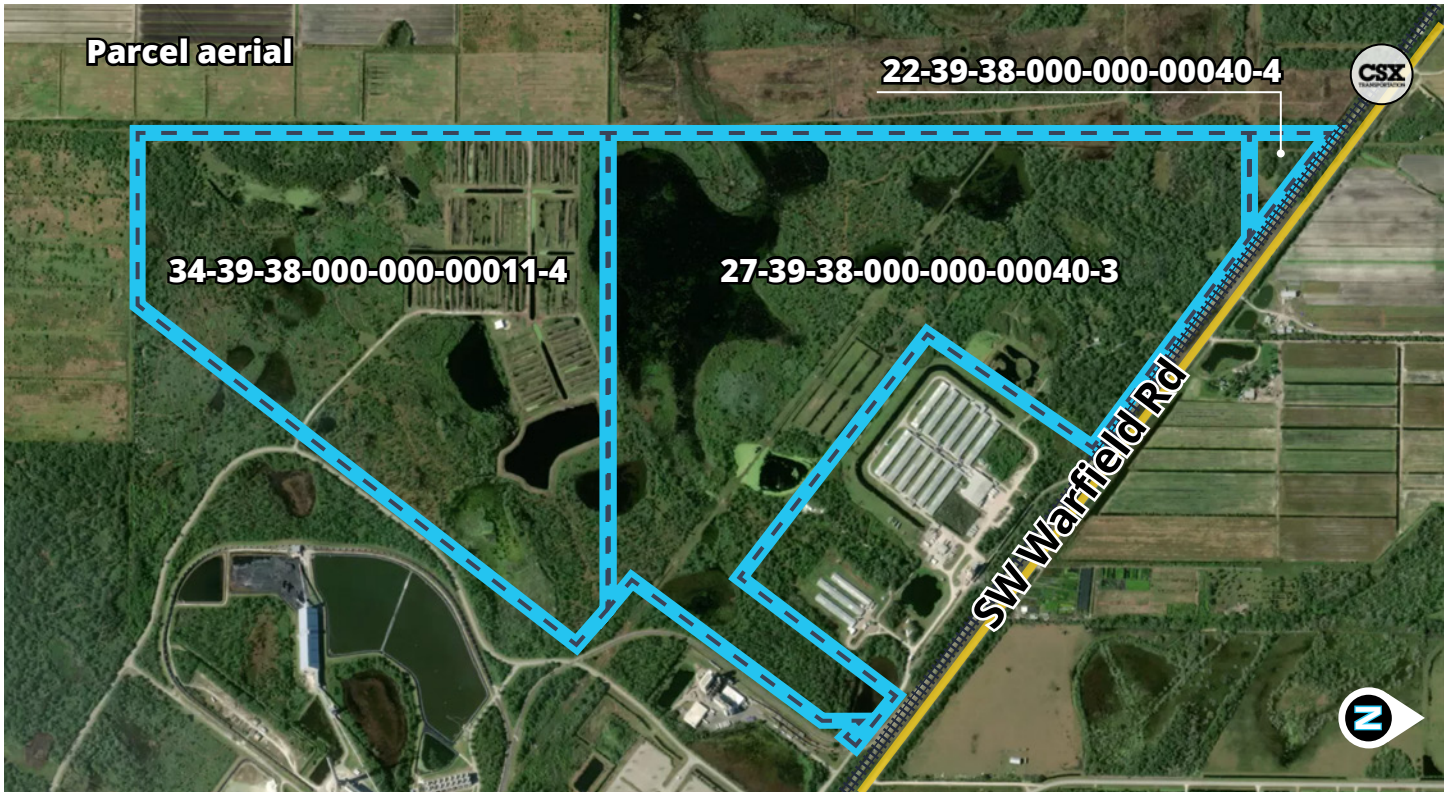
Get more information

Jay Ziv, CCIM, SIOR, ALC
Principal
+1 305 498 2200
jay.ziv@avisonyoung.com

avisonyoung.com

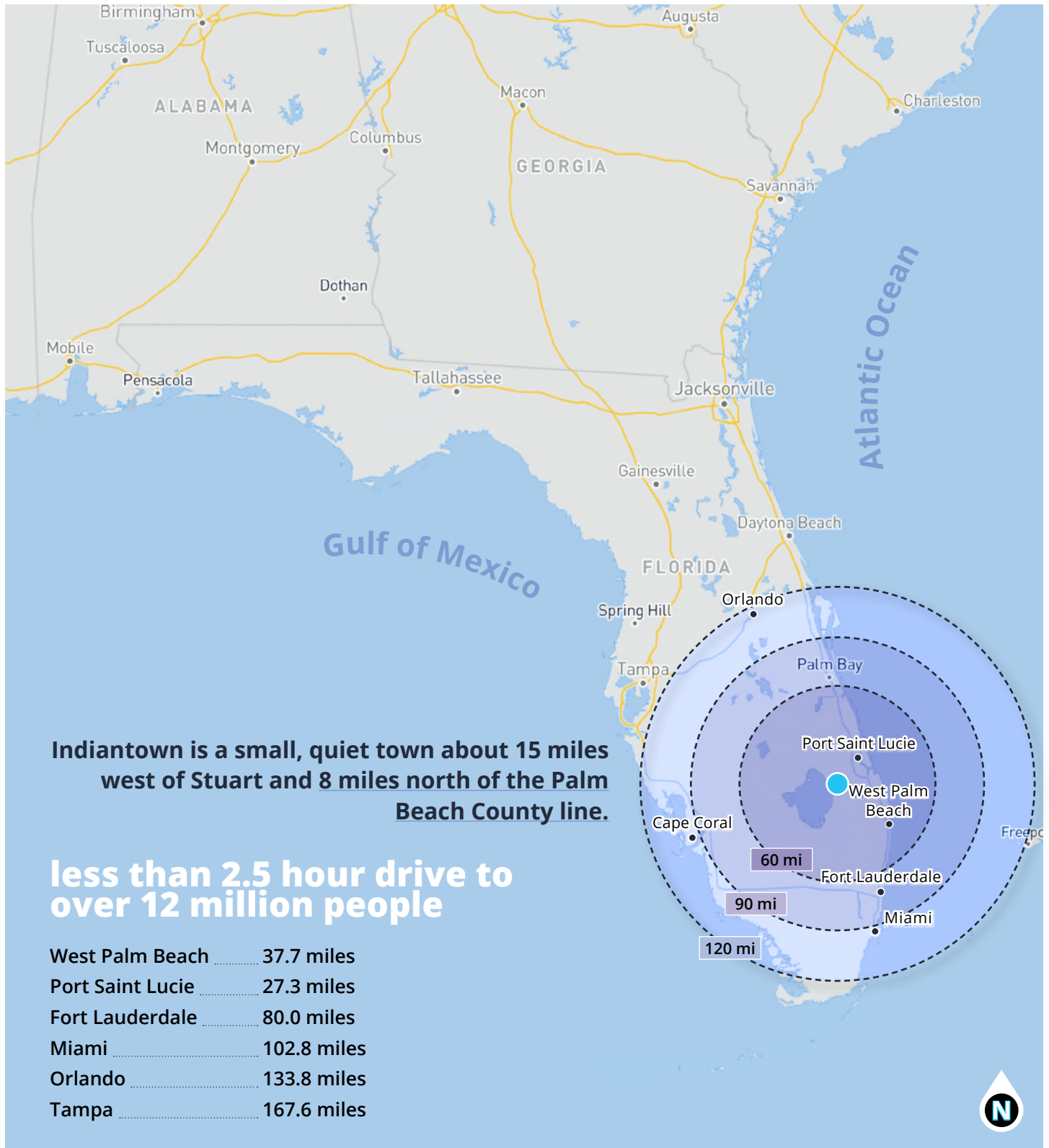
Industrial land opportunity

13820 SW Silver Fox Lane
Indiantown, FL 33142



Jay Ziv, CCIM, SIOR, ALC
Principal
+1 305 498 2200
jay.ziv@avisonyoung.com





Jay Ziv, CCIM, SIOR, ALC
Principal
+1 305 498 2200
jay.ziv@avisonyoung.com

