

## Arrowhead Shopping Center - 1600 2nd Avenue SW, Minot, ND



### Call for Lease Rates

### Property Information

- ◆ Available Suites
  - ◇ Suite 04 - 408 sf
  - ◇ Suite 06 - 1,416 sf
- ◆ Grocery Anchored by Marketplace Foods
- ◆ Great Signage & Ample Parking

### Location Highlights

- ◆ Located at the corner of 16th Street SW & 2nd Avenue SW
- ◆ 9,900 vpd on 16th Street SW



**Duemelands Commercial Real Estate**  
301 E. Thayer Avenue - Bismarck, ND 58501  
Phone: (701) 221-2222  
[www.duemelands.com](http://www.duemelands.com)

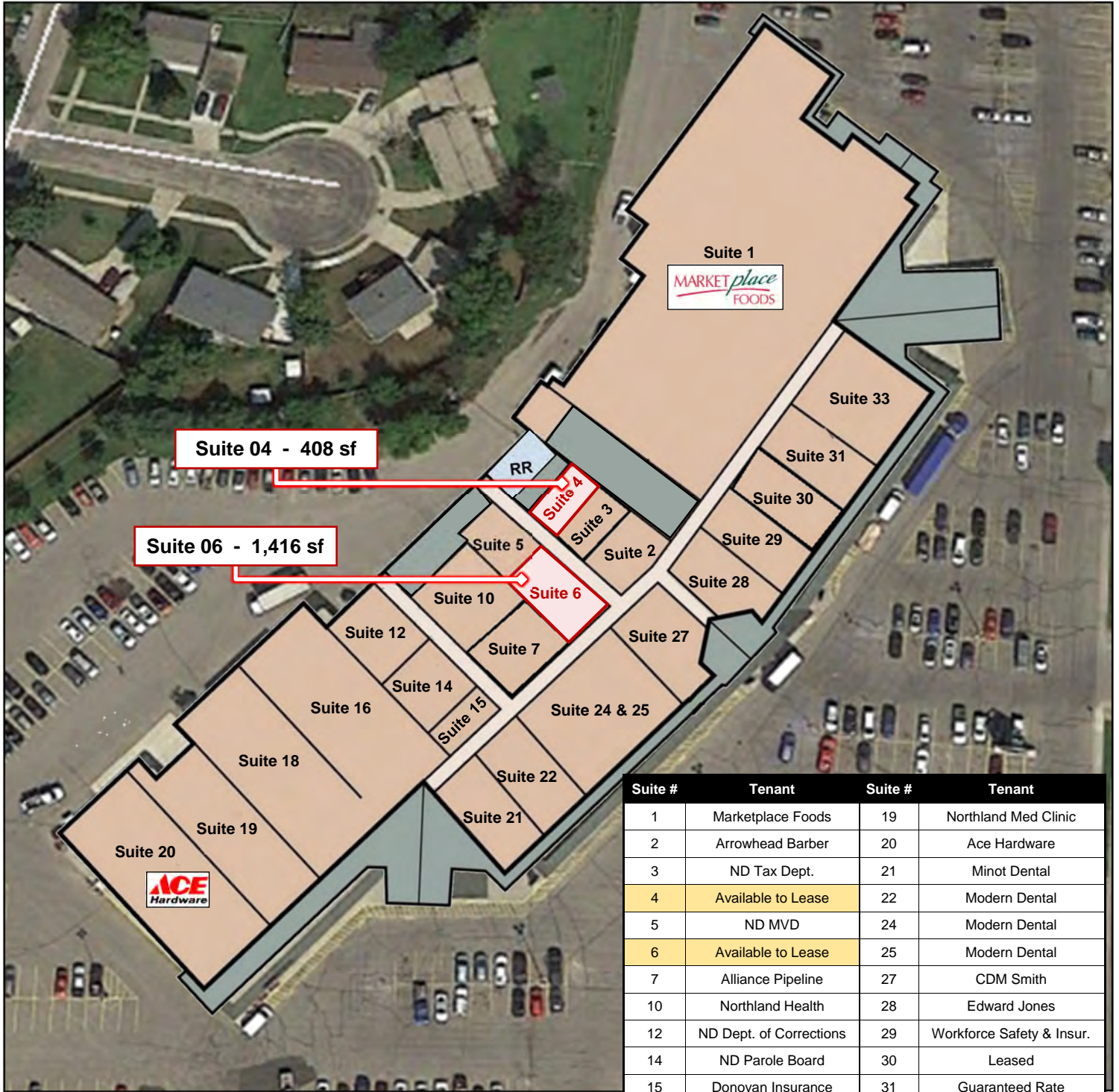
**Jill Duemeland, CCIM**  
CEO & President  
Direct: 701.221.9033  
[jill@duemelands.com](mailto:jill@duemelands.com)

**April Eide, CCIM**  
VP of Brokerage  
Phone: 701.223.5863  
[april@duemelands.com](mailto:april@duemelands.com)



# Floorplan & Tenant List

Office | Retail Space



Suite #	Tenant	Suite #	Tenant
1	Marketplace Foods	19	Northland Med Clinic
2	Arrowhead Barber	20	Ace Hardware
3	ND Tax Dept.	21	Minot Dental
4	Available to Lease	22	Modern Dental
5	ND MVD	24	Modern Dental
6	Available to Lease	25	Modern Dental
7	Alliance Pipeline	27	CDM Smith
10	Northland Health	28	Edward Jones
12	ND Dept. of Corrections	29	Workforce Safety & Insur.
14	ND Parole Board	30	Leased
15	Donovan Insurance	31	Guaranteed Rate
16	Enbridge	33	Marketplace Liquor
18	Enbridge		



**Duemelands Commercial Real Estate**  
 301 E. Thayer Avenue - Bismarck, ND 58501  
 Phone: (701) 221-2222  
[www.duemelands.com](http://www.duemelands.com)

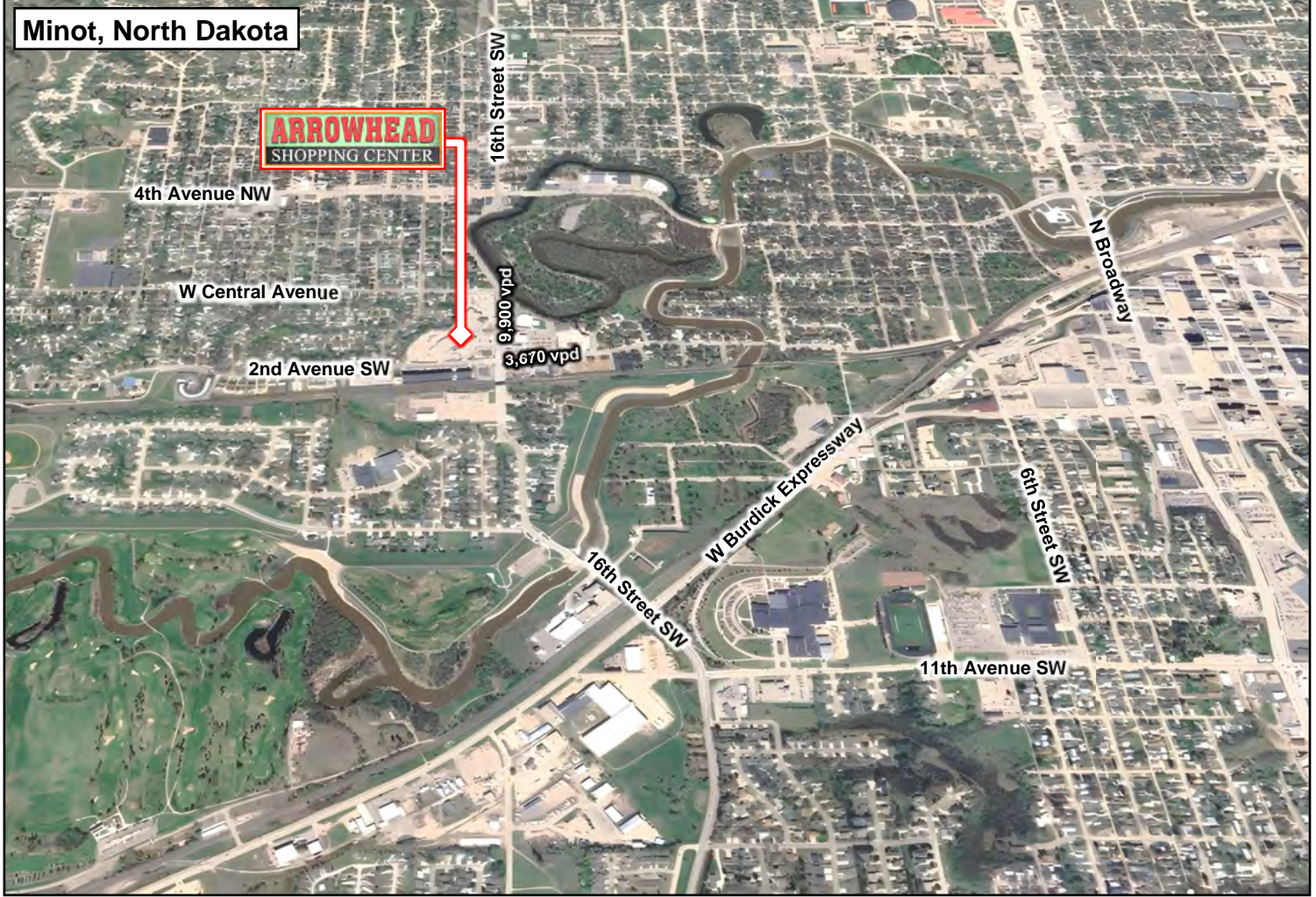
**Jill Duemeland, CCIM**  
*CEO & President*  
 Direct: 701.221.9033  
[jill@duemelands.com](mailto:jill@duemelands.com)

**April Eide, CCIM**  
*VP of Brokerage*  
 Phone: 701.223.5863  
[april@duemelands.com](mailto:april@duemelands.com)



# Property Location

Office | Retail Space



**Duemelands Commercial Real Estate**  
301 E. Thayer Avenue - Bismarck, ND 58501  
Phone: (701) 221-2222  
[www.duemelands.com](http://www.duemelands.com)

**Jill Duemeland, CCIM**  
CEO & President  
Direct: 701.221.9033  
[jill@duemelands.com](mailto:jill@duemelands.com)

**April Eide, CCIM**  
VP of Brokerage  
Phone: 701.223.5863  
[april@duemelands.com](mailto:april@duemelands.com)