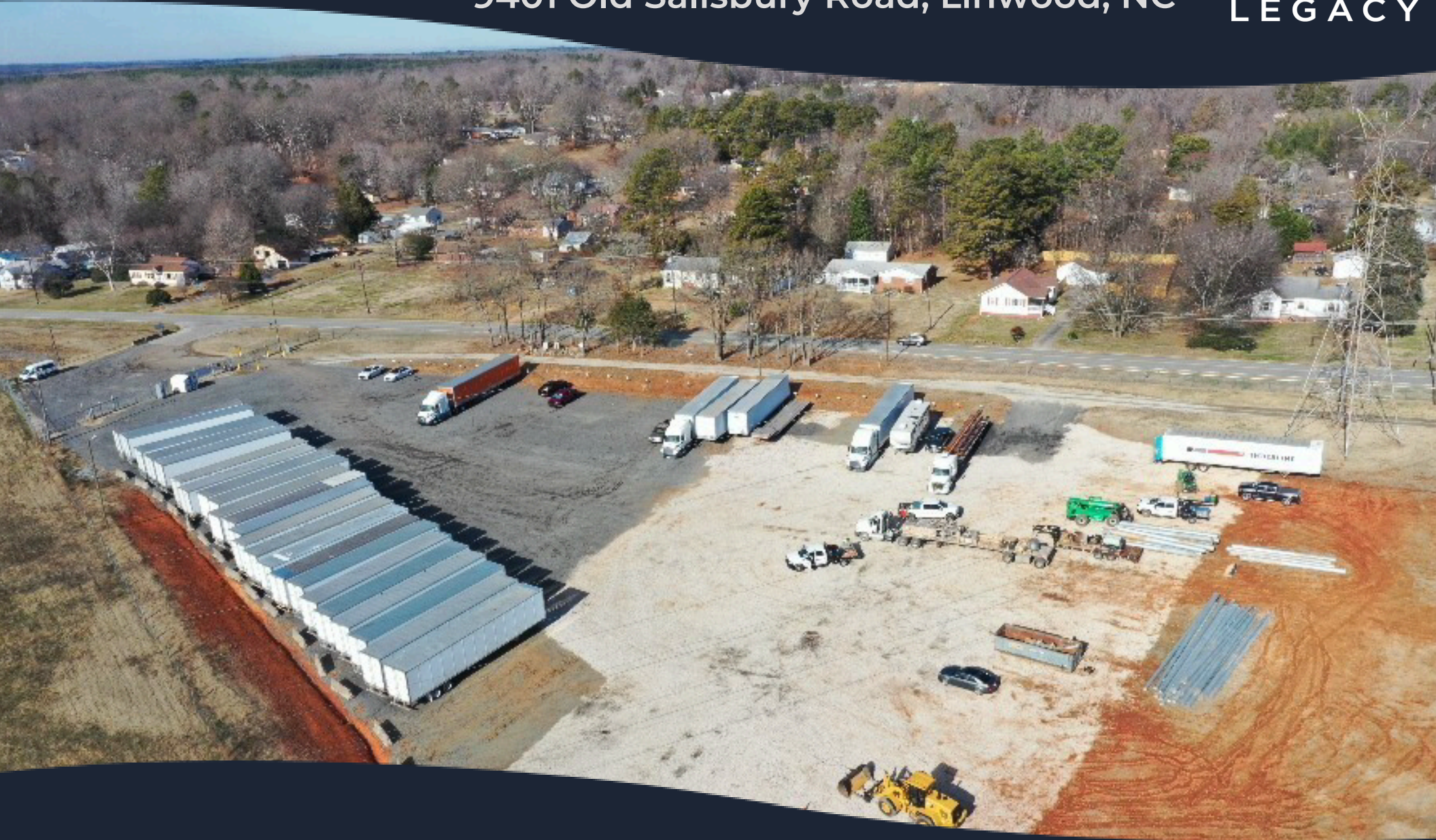


# Truck Parking Available

9401 Old Salisbury Road, Linwood, NC



**Geoff Partel**

**Email:** [gpartel@legacycre.com](mailto:gpartel@legacycre.com)

**Phone Number:** (917) 763.6166

**Andrew Blumenthal**

**Email:** [ablumenthal@legacycre.com](mailto:ablumenthal@legacycre.com)

**Phone Number:** (704) 618.1802

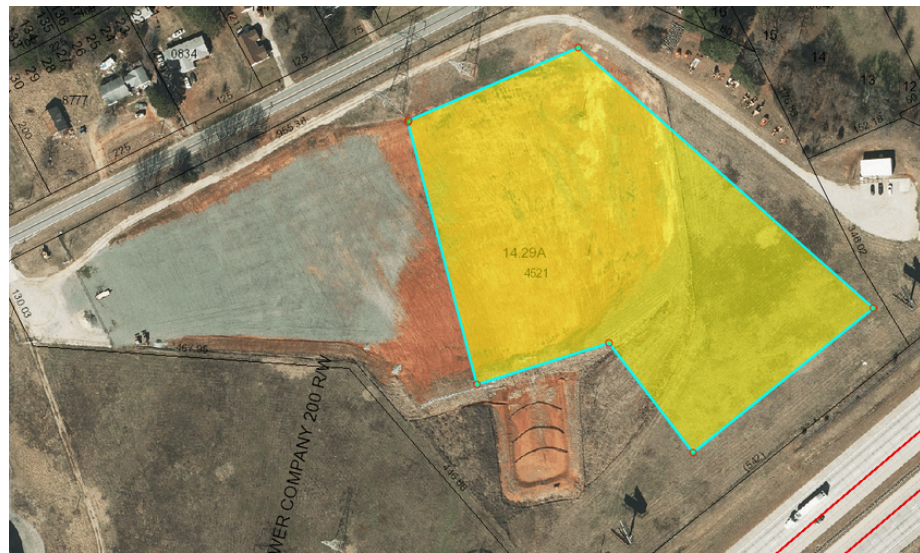
**Legacy**  
704.373.1800





**1.5 Acres currently available**

**Additional 5 Acres undeveloped land could be added**



This safe and secure parking facility is conveniently located just north of Salisbury, NC and south of the Piedmont Triad along Interstate 85 - NC Highway 150N (Exit 84). It is located less than 1 mile off of the interstate at 9401 Old Salisbury Road, Linwood, NC. This facility has an asphalt milling surface, automated entry gate, well-lit, 24/7 access, live-feed surveillance system, and perimeter fencing. Reserved spaces are identified with numbered signs.

**Geoff Partel**  
**Email:** gpartel@legacycre.com  
**Phone Number: (917) 763.6166**

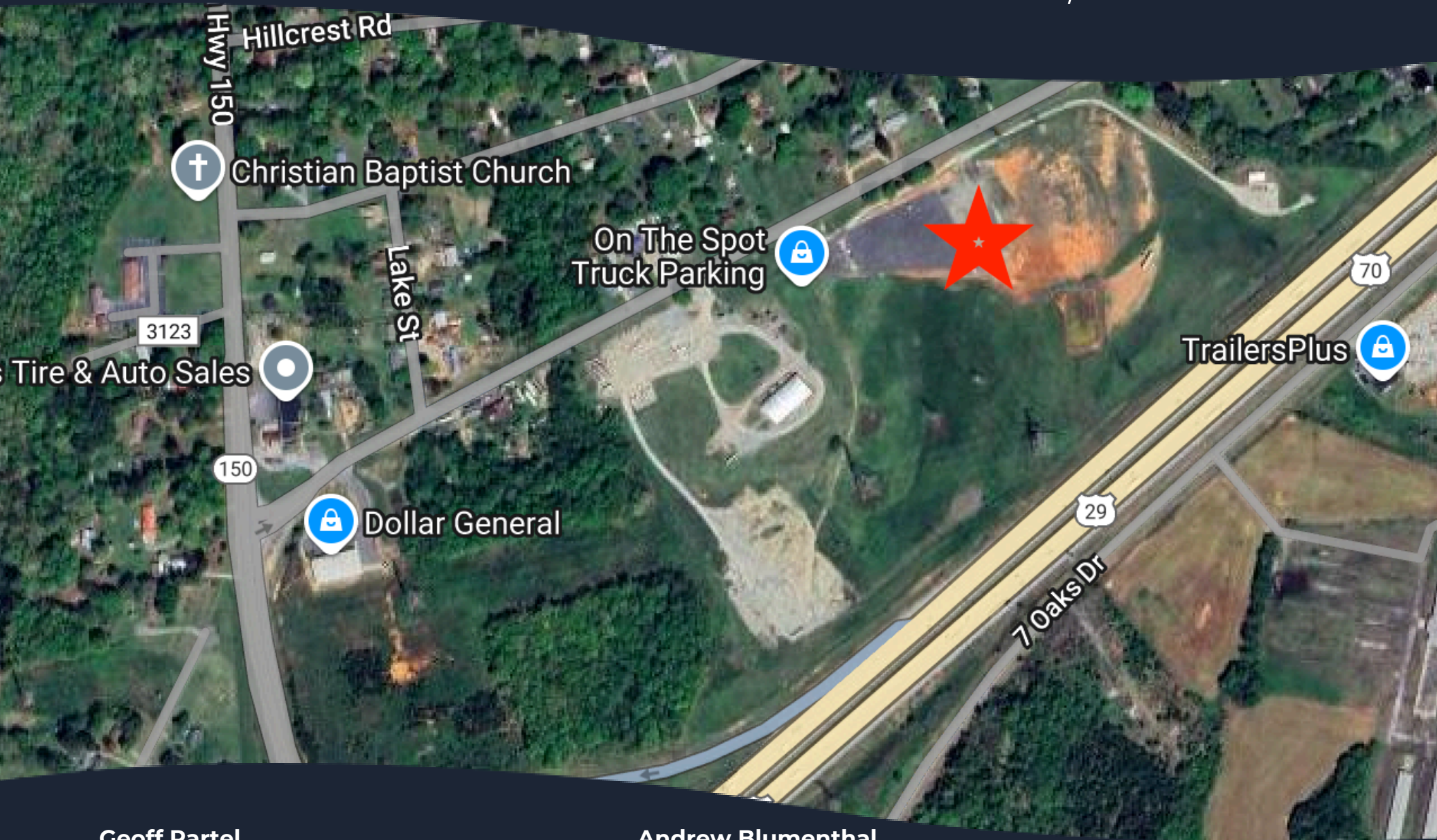
**Andrew Blumenthal**  
**Email:** ablumenthal@legacycre.com  
**Phone Number: (704) 618.1802**





Legacy  
704.373.1800

9401 Old Salisbury Road,  
Linwood, NC



**Geoff Partel**

**Email:** gpartel@legacycre.com

**Phone Number: (917) 763.6166**

**Andrew Blumenthal**

**Email:** ablumenthal@legacycre.com

**Phone Number: (704) 618.1802**

[www.legacycre.com](http://www.legacycre.com)