



WOONSOCKET, RI

1400 PARK AVENUE

UP TO 37,169 SF OF CONTIGUOUS SPACE AVAILABLE



PROJECT DETAILS

1400 PARK AVENUE • UP TO 37,169 SF OF CONTIGUOUS SPACE AVAILABLE • RETAIL

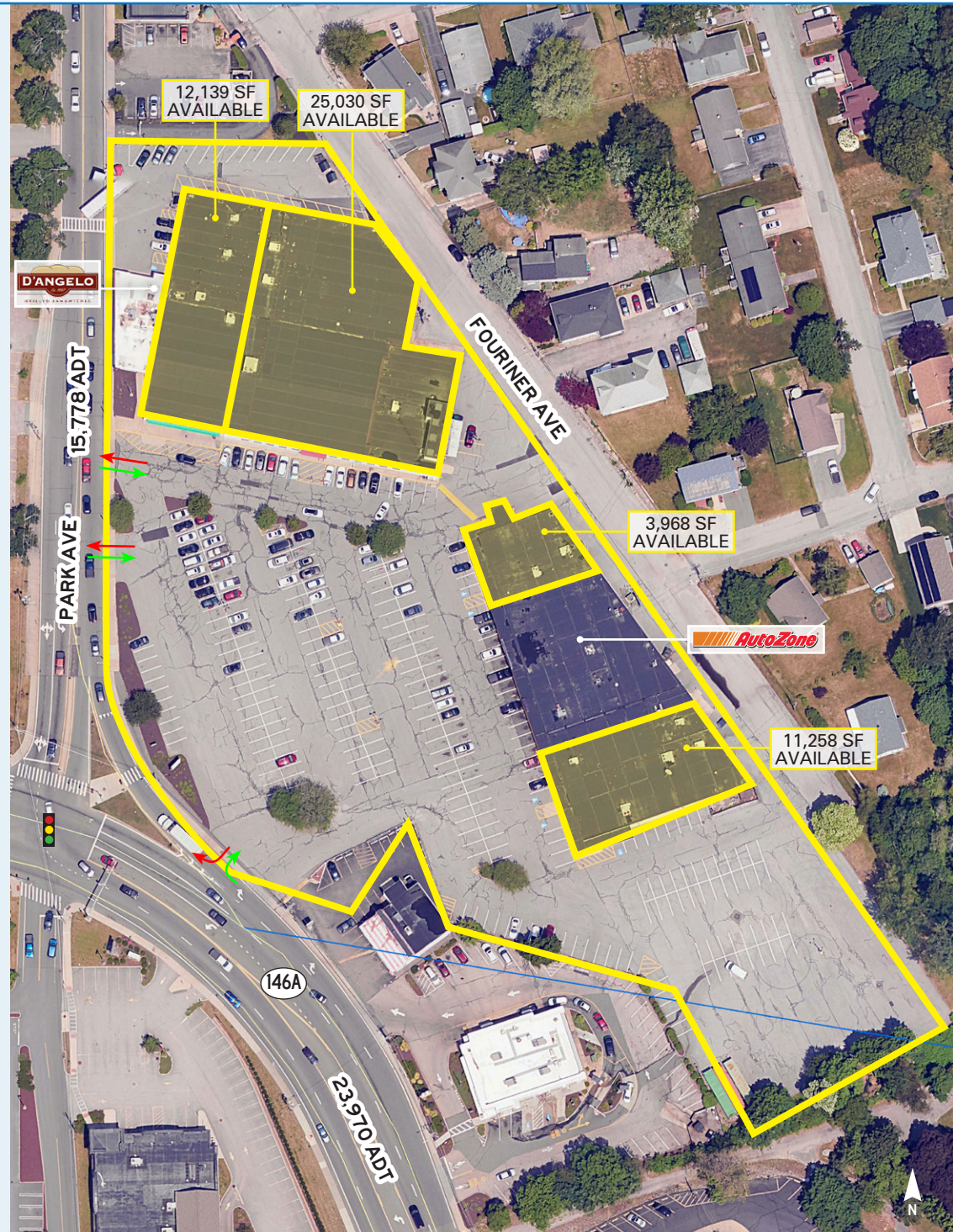
PROPERTY HIGHLIGHTS

- 3,968 - 37,169 SF Available
- Conveniently located across from Stop & Shop Supermarket at busy, signalized intersection
- Located close to Dowling Village, a 600,000 square foot power center anchored by Walmart Supercenter and Lowe's
- Pylon signage available

OFFERING SUMMARY

GLA	65,000 SF
PARKING	4.46/1,000 SF (~290 Spaces)
ACREAGE	5.28
ZONE	C-1 Urban Commercial District

2025 DEMOGRAPHICS	3 MILES	5 MILES	7 MILES
TOTAL POPULATION	62,380	97,159	138,575
DAYTIME POPULATION	57,605	95,570	127,960
AVERAGE HH INCOME	\$94,442	\$111,782	\$127,643
TOTAL HOUSEHOLDS	26,854	39,579	55,291

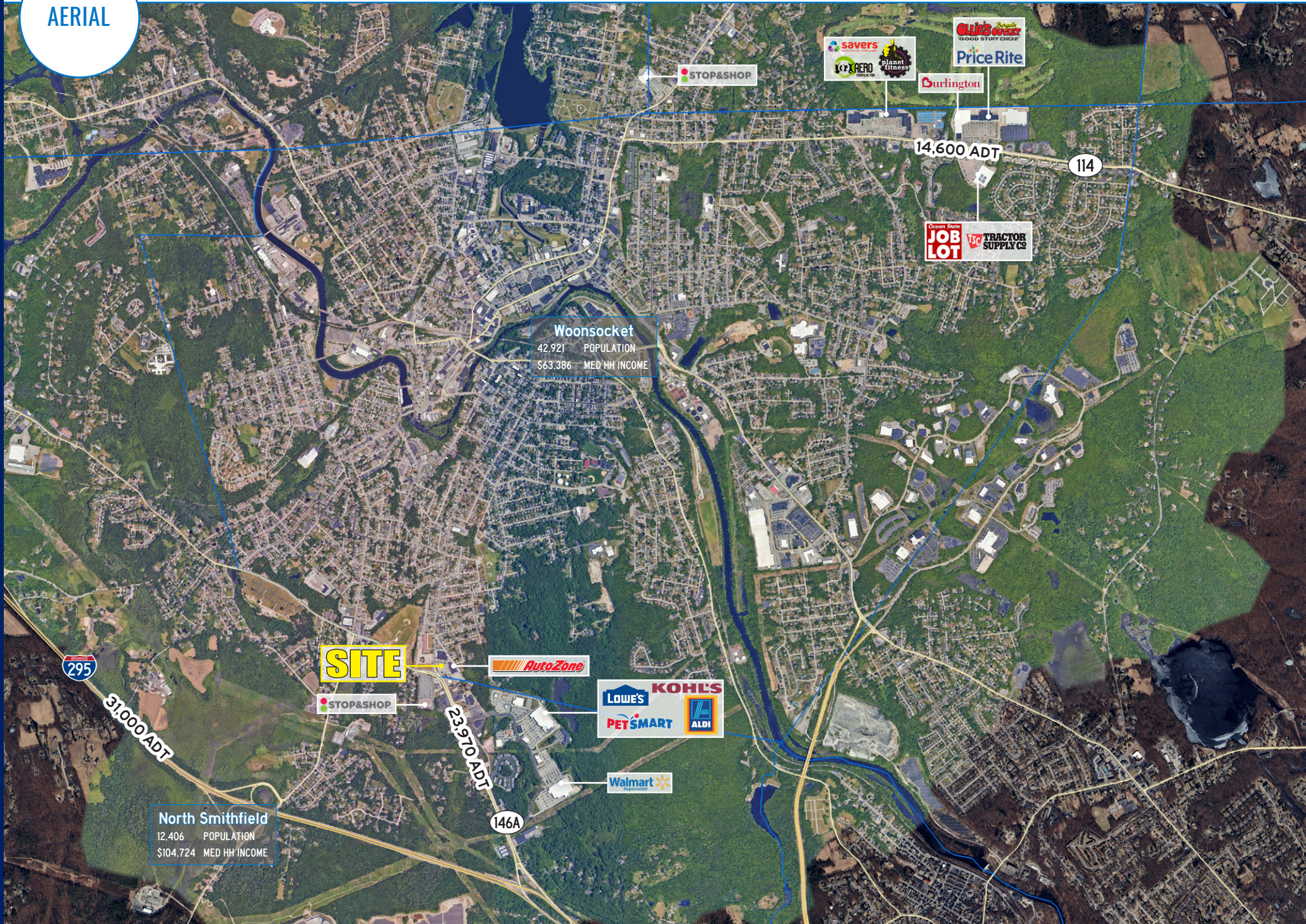


ZOOM
AERIAL

1400 PARK AVENUE • UP TO 37,169 SF OF CONTIGUOUS SPACE AVAILABLE • RETAIL



AERIAL



WOONSOCKET, RI

1400 PARK AVENUE

UP TO 37,169 SF OF CONTIGUOUS SPACE AVAILABLE

SCOTT BLACK

617.369.5902
SBLACK@ATLANTICRETAIL.COM

JACK LYMAN

860.391.1736
JLYMAN@ATLANTICRETAIL.COM



BOSTON
THE PRUDENTIAL CENTER
BOSTON, MA 02199
617.239.3600

ALBANY

ATLANTA

CHARLOTTE

LOS ANGELES

NEW YORK CITY

ORLANDO

PITTSBURGH

WEST PALM BEACH

WWW.ATLANTICRETAIL.COM

[LINKEDIN.COM/COMPANY/ATLANTIC-RETAIL-PROPERTIES](https://www.linkedin.com/company/atlantic-retail-properties)
 [INSTAGRAM.COM/ATLANTIC_RETAIL/](https://www.instagram.com/atlantic_retail/)

REALTY RESOURCES **CHAINLINKS**
RETAIL ADVISORS