

10620 PARK ROAD

CHARLOTTE | NORTH CAROLINA
BUILDING 400



WILL ROBERTSON
704-996-5824
will@FlagshipHP.com

GREG MCINTOSH
704-562-2153
greg@FlagshipHP.com

FOR LEASE

PROPERTY OVERVIEW



TOTAL BUILDING AREA:
± 32,463 SF



TOTAL AVAILABLE SPACE:
Suite 230: ± 1,577 RSF



LEASE RATE:
\$28.00/SF



LEASE TYPE:
NNN



YEAR BUILT:
1988

PROPERTY OVERVIEW

10620 Park Road is a two-story, multi-tenant medical office building located in the heart of Pineville. With close proximity to Atrium Health Pineville, ample parking, and a diverse tenant mix this property provides a first-rate office opportunity for a variety of medical practices.

CONTACT:

WILL ROBERTSON
704-996-5824
will@FlagshipHP.com

GREG MCINTOSH
704-562-2153
greg@FlagshipHP.com



2022 Demographics	1 Mile	3 Miles	5 Miles
Population	5,300	31,487	192,538
Households	2,269	13,107	39,130
Median HH Income	\$89,278	\$89,750	\$91,714
Median Age	37.4	40.0	39.1

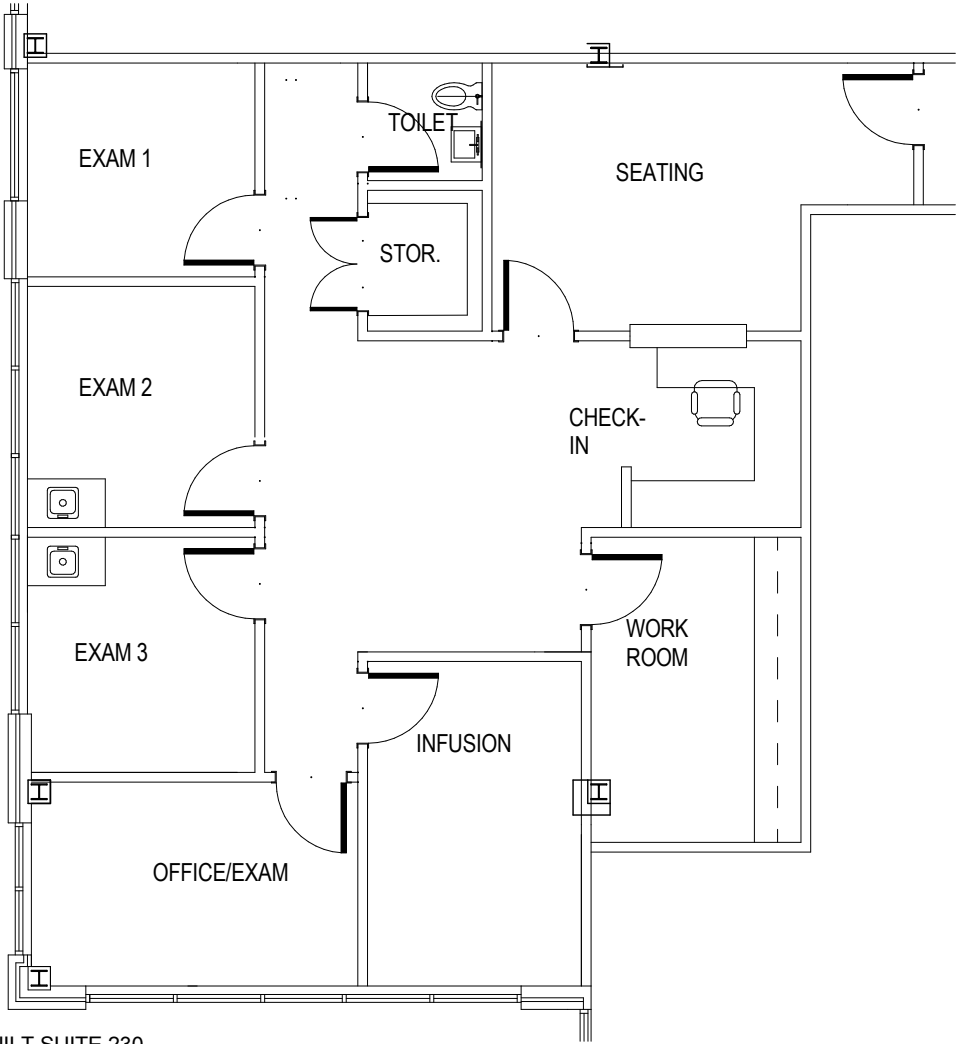
LOCATION

10620 Park Road is located between Pineville-Matthews Road (Hwy 51) and Park Road in Charlotte, North Carolina.

Less than 1 mile from I-485 and near Atrium Health Pineville, the property is both conveniently located and surrounded by restaurant and retail amenities.

FLOOR PLAN

SUITE 230:
± 1,577 RSF



① AS-BUILT SUITE 230
3/16" = 1'-0" ON 11" x 17"

AREA MAP



Home Depot

Carolinas ContinueCARE Hospital

DeVita South Charlotte Dialysis

Carmel Foot Specialist

Metrolina Dermatology

Horizon Eye Care

Park Crossing Dentistry

485

Atrium Health Pineville

10620 Park Road

ALDI

Charlotte Limb Preservation & Diabetic Foot Center

Atrium Health Liver Care

Tryon Medical Partners

- Site
- Medical
- Non-medical

PINEVILLE-MATTHEWS RD

PARK RD