

LEASING DECK

WAREHOUSE/OFFICE FOR LEASE

1724 RICHMOND TER
STATEN ISLAND, NY



ROB NIXON
718-866-8683
ROB@PREREAL.COM

JOSEPH GALLO
929-225-3601
JOE@PREREAL.COM

ASKING PRICE:
\$12,000/MONTH

THE NIXON
TEAM
PREREAL.COM



PREREAL.COM/NIXON-TEAM

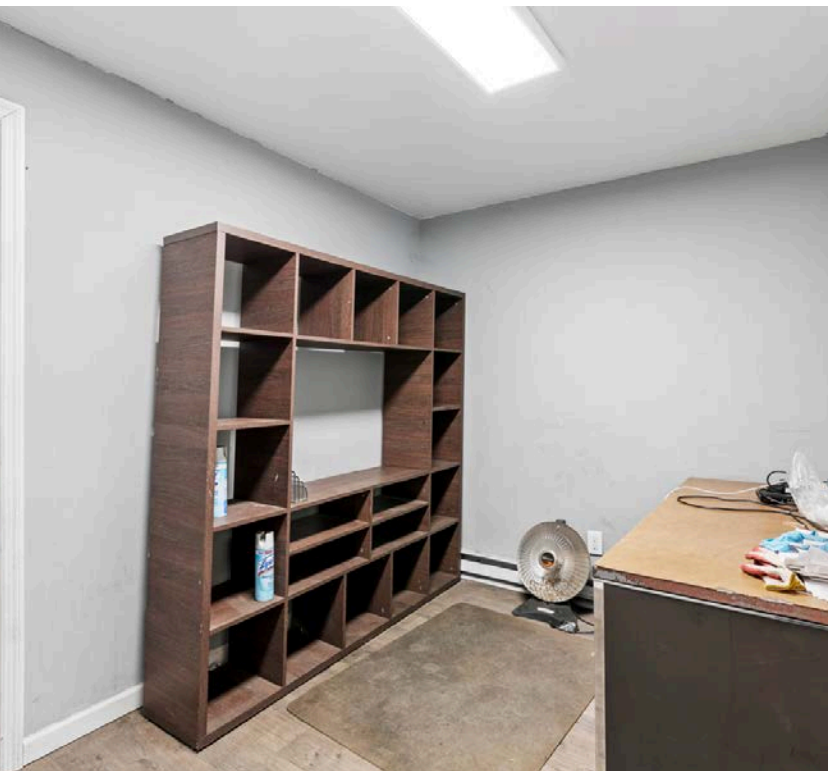
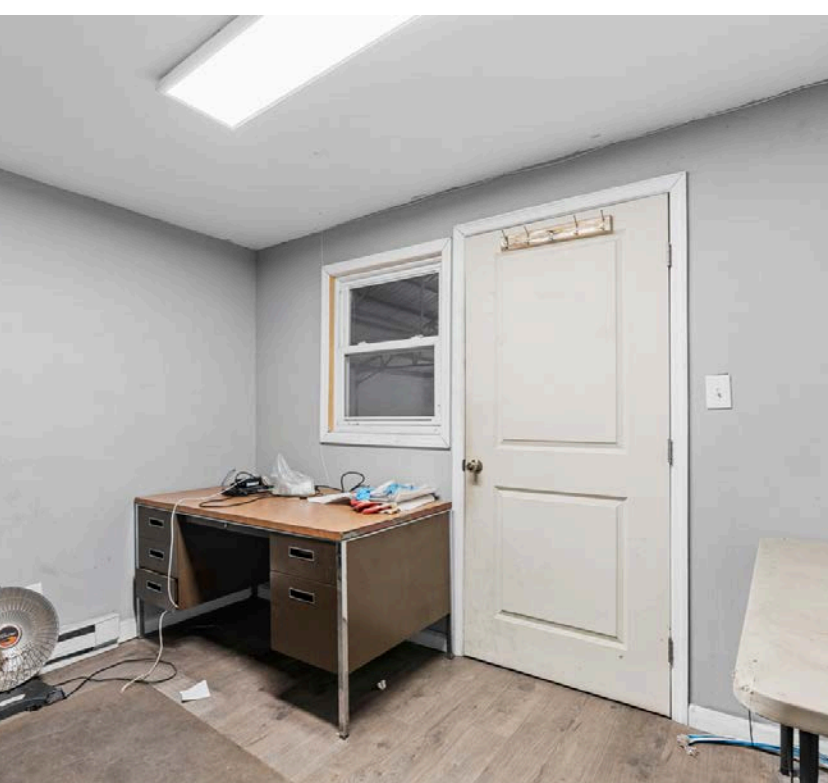
THE OFFERING

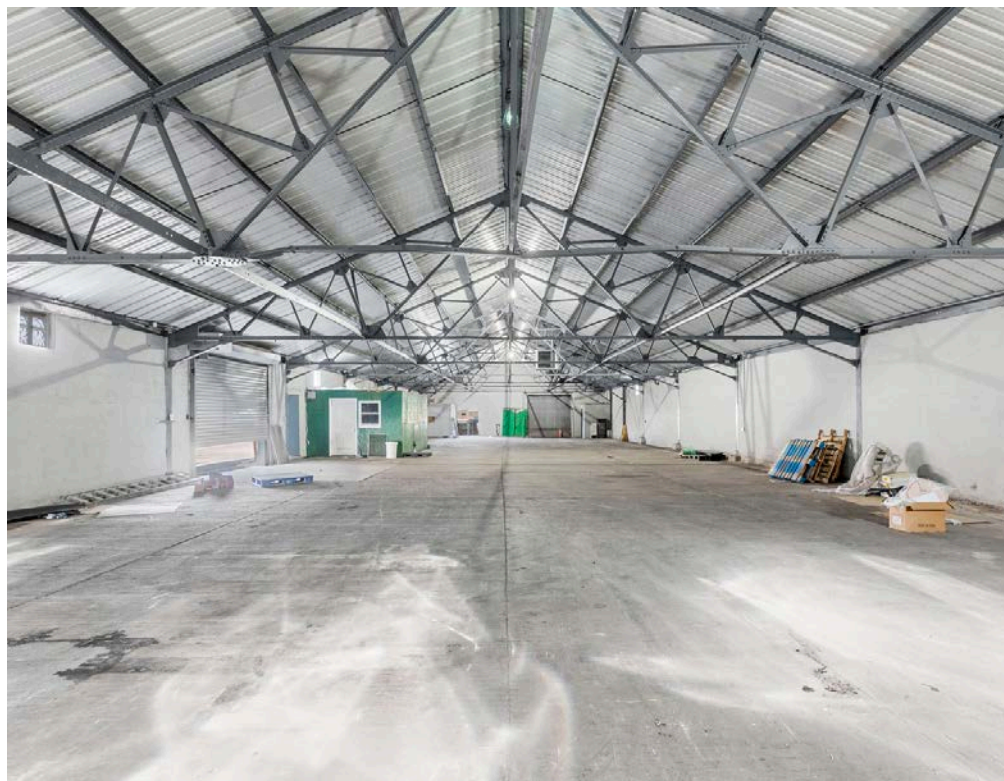
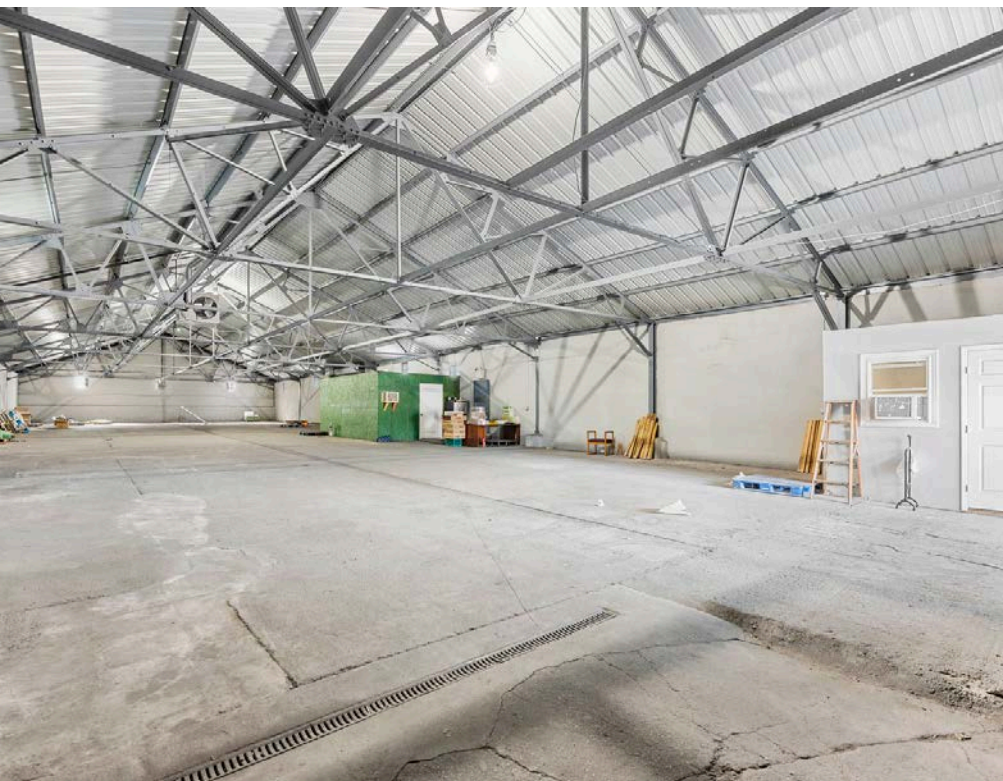
| | |
|--------------------|-------------------|
| PROPERTY ADDRESS | 1724 RICHMOND TER |
| LOT AREA | 14,600 SF |
| BUILDING SIZE | 7,500 SF |
| BLOCK | 188 |
| LOT | 8 |
| ZONING | R3-2, C2-2 |
| BUILDING DIMENSION | 50x145 |
| CEILING | 20 FEET |



PROPERTY SUMMARY

PreReal is pleased to present our newest listing: a 7,500 square-foot warehouse/office on a 14,500 square-foot lot, just off Richmond Terrace. The warehouse includes two good-sized offices inside, 20-foot ceilings, a 13-foot overhead door, and a 10-foot overhead door on the side for easy access. You'll love the standout feature: generous storage space both inside and along the side of the building, paired with ample truck parking right next to it. Its handy spot near major roads adds to its appeal for any business.





LOCATION SUMMARY



DEMOGRAPHICS



POPULATION

| 1 MILE | 3 MILE | 5 MILE |
|--------|---------|---------|
| 44,873 | 275,543 | 557,890 |



AVERAGE HOUSEHOLD INCOME

| 1 MILE | 3 MILE | 5 MILE |
|-----------|-----------|-----------|
| \$108,688 | \$117,152 | \$116,722 |



NUMBER OF HOUSEHOLDS

| 1 MILE | 3 MILE | 5 MILE |
|--------|--------|---------|
| 15,229 | 97,060 | 199,709 |



ROB NIXON

SALES AND LEASING ASSOCIATE

718-866-8683

ROB@PREREAL.COM



JOSEPH GALLO

NYS LICENSED REAL ESTATE SALESPERSON

929-225-3601

JOE@PREREAL.COM
