

HWY 395



PASCO AUTOPLEX

3305 W MARIE ST
PASCO, WA 99301

Scott Sautell
Senior Advisor
509.430.8986
scott.sautell@svn.com

Property Summary



OFFERING SUMMARY

Sale Price:	\$2,500,000
Lot Size:	2 Acres
Year Built:	1990
Building Size:	2,628
Renovated:	2016
Zoning:	C3
Price / SF:	\$951.29

PROPERTY OVERVIEW

Prime Pasco Autoplex Property next to Ford, Chevrolet, Cadillac and Mazda. This 2 acre commercial property in the Pasco Autoplex, boasts a prime corner location and is zoned C3. The 2,628 square foot glass front sales building, constructed in 1990 and tastefully renovated in 2016, offers modern amenities, including new LED parking lot lighting. With close proximity to Highway 395 access, this property presents an enticing prospect for a commercial fleet lot, used cars/tucks, boats, RV's or a redevelopment opportunity.

PROPERTY HIGHLIGHTS

- 2 Acres in the Pasco Autoplex
- 2,628 square foot sales building
- New LED parking lot lighting
- Corner property
- Close proximity to Highway 395 access

Additional Photos



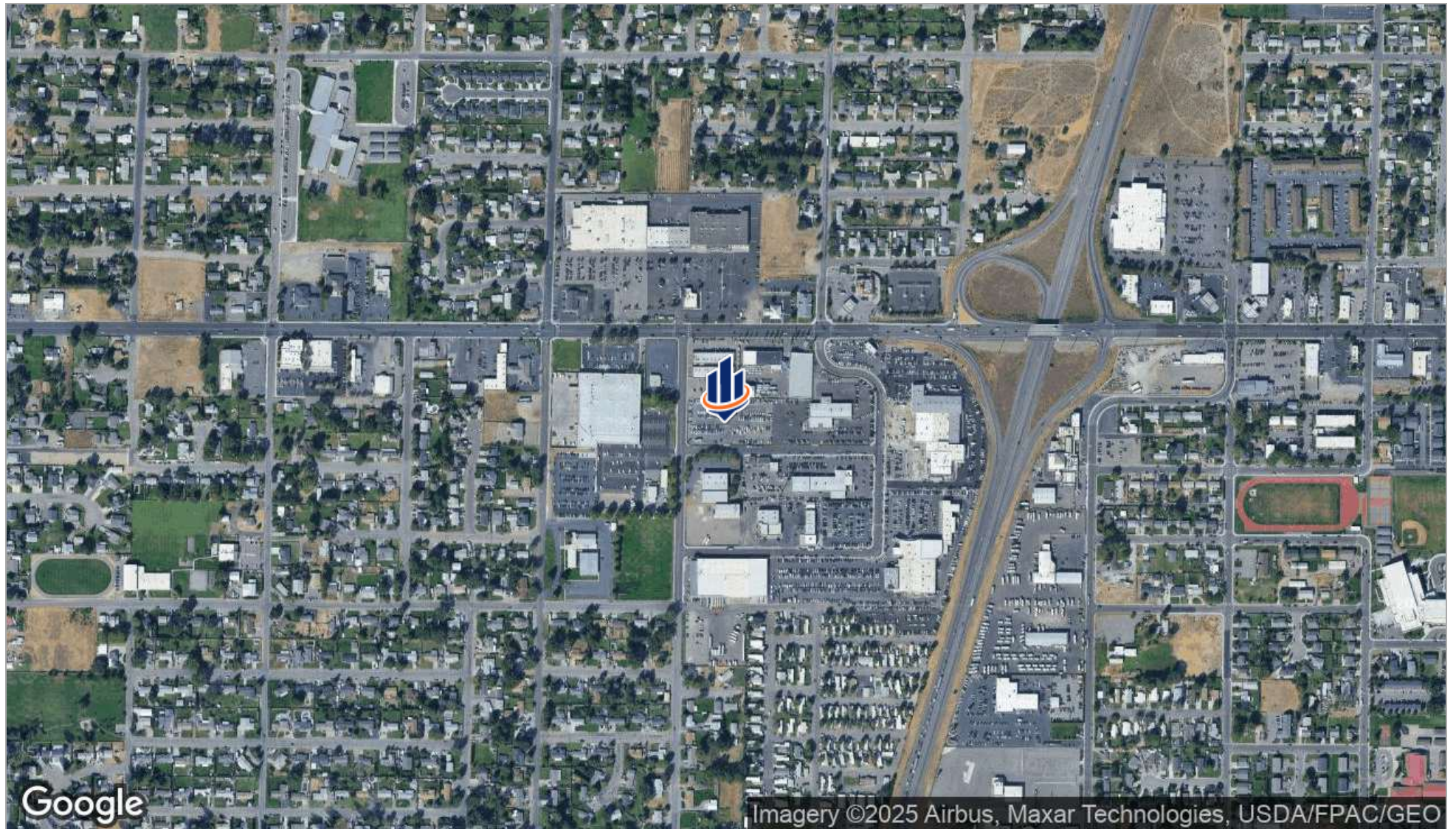
Additional Photos



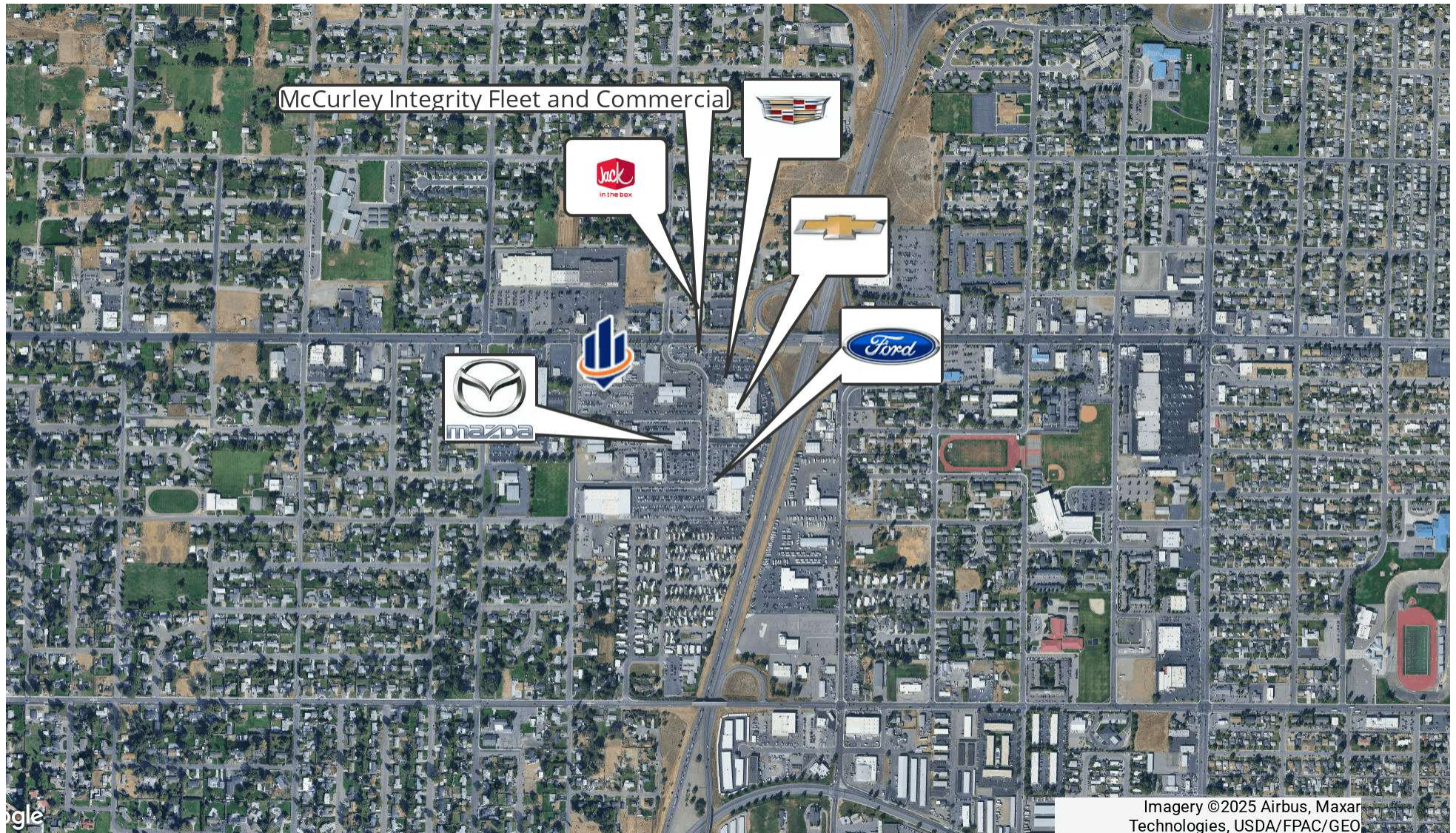
Additional Photos



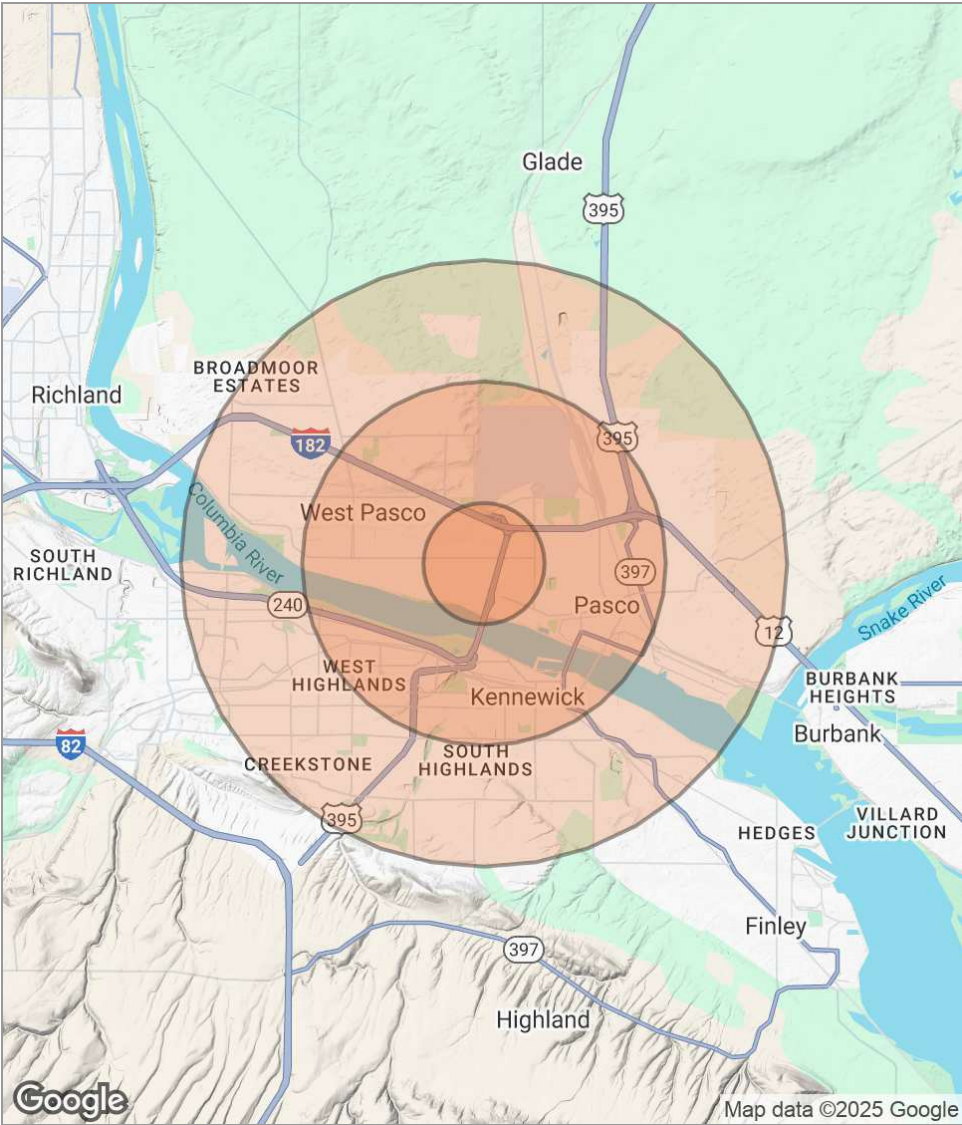
Location Maps



Retailer Map



Demographics Map



POPULATION	1 MILE	3 MILES	5 MILES
Total population	11,411	77,481	158,346
Median age	35	35	35
Median age (male)	34	34	35
Median age (Female)	36	35	36
HOUSEHOLDS & INCOME	1 MILE	3 MILES	5 MILES
Total households	3,738	25,482	53,054
# of persons per HH	3.1	3	3
Average HH income	\$91,110	\$95,717	\$101,318
Average house value	\$349,662	\$324,695	\$349,038

* Demographic data derived from 2020 ACS - US Census