

66 W 94th Street

NEW YORK, 10025 NY



ROZITA SOOMEKH

Licensed Real Estate Broker

Rozita.Soomekh@elliman.com

516.205.2279



MEDICAL/ PROFESSIONAL OFFICE FOR LEASE



Approximately 900 SF

\$ 3,650/ Monthly Including Heat and Water

Unit on the lobby of a multi-family building suitable for medical/ professional use. It features three rooms, all with sinks and cabinets, a reception area and a bathroom. It has many large windows for natural light. Designed for functionality and comfort, the office allows for customization to suit for any need. The added convenience of a doorman, ensuring security and prestige.

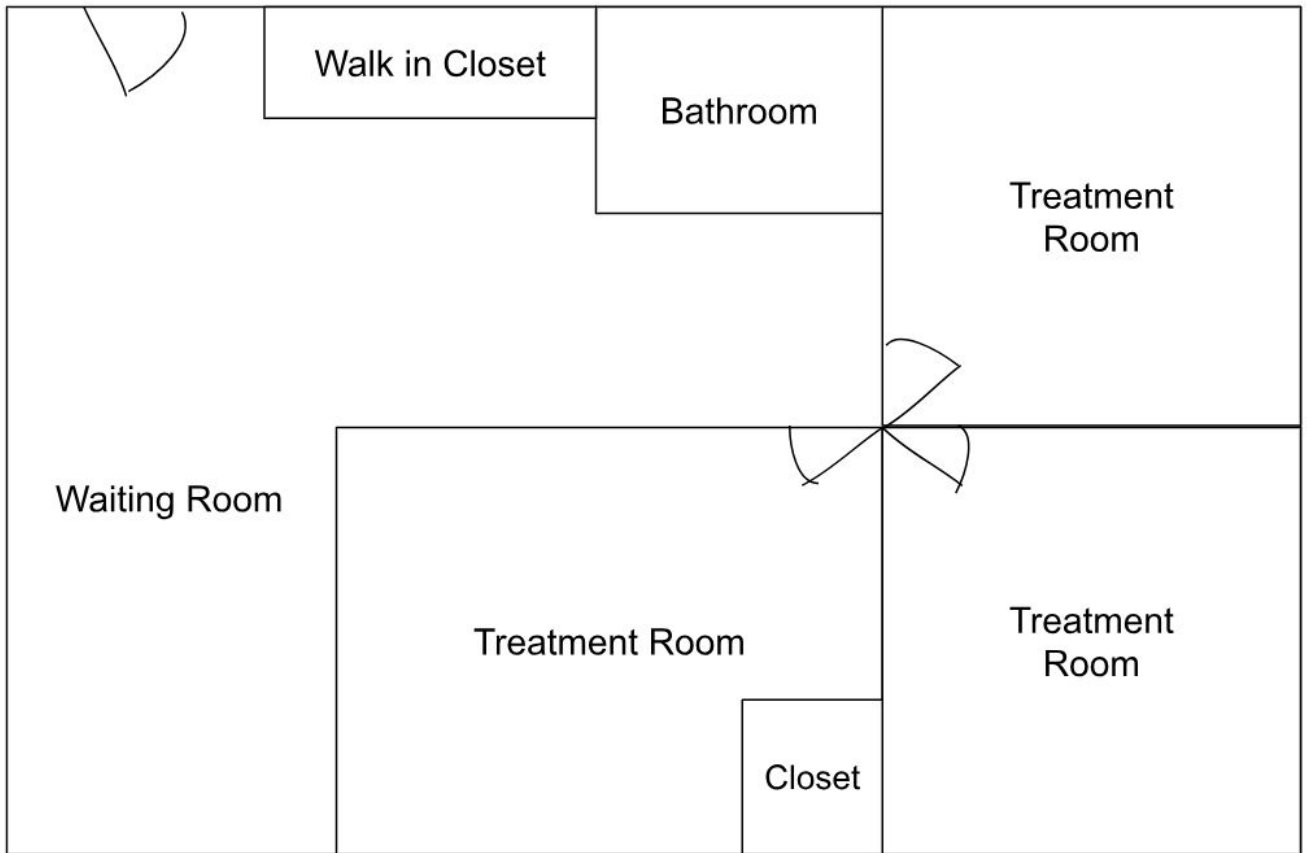
Exceptional location with Central Park as the backdrop, close to MTA, restaurants, banks, post office and etc.

A sublease unit with negotiable terms.

66 W 94th Street

NEW YORK, 10025 NY

Waiting Area, Bathroom, Three Rooms-Each with Sinks and Cabinets



THE ROZITA SOOMEKH TEAM
at Douglas Elliman
Real Estate



ROZITA SOOMEKH

Licensed Real Estate Broker

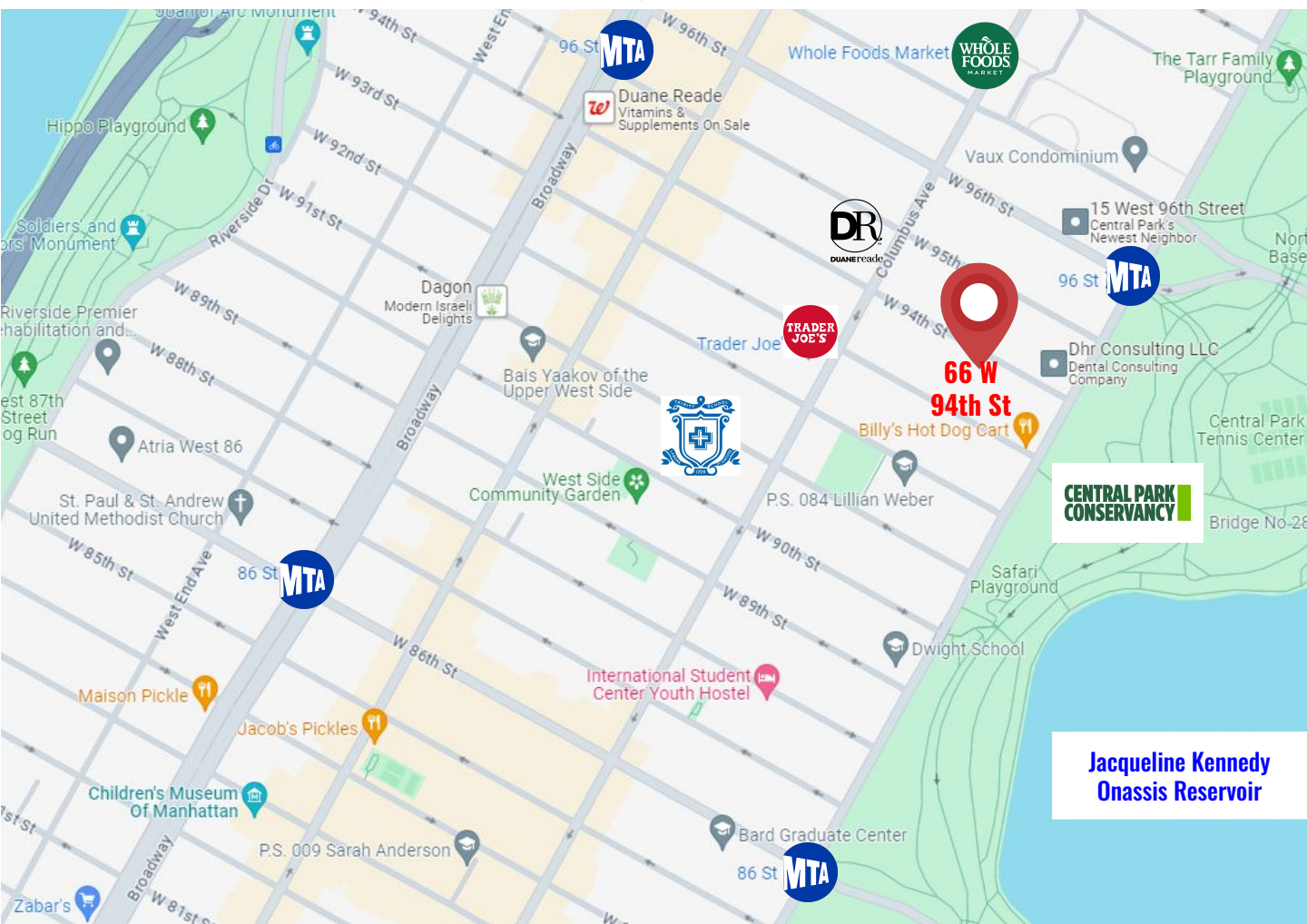
Rozita.Soomekh@elliman.com

516.205.2279



66 W 94th Street

NEW YORK, 10025 NY



THE ROZITA SOOMEKH TEAM
at Douglas Elliman
Real Estate



ROZITA SOOMEKH

Licensed Real Estate Broker

Rozita.Soomekh@elliman.com

516.205.2279

