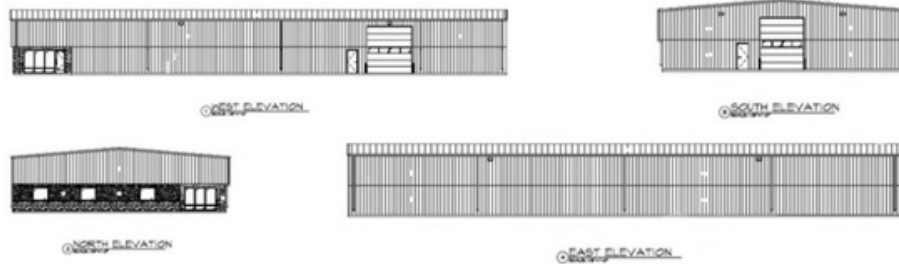
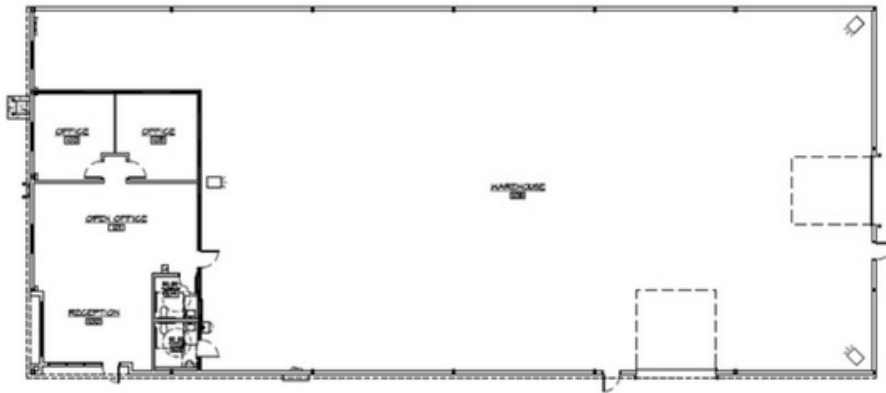


BRAND NEW INDUSTRIAL BUILDING WITH YARD NOW AVAILABLE EXCELLENT LOCATION NEAR CONSTITUTION & MARKSHEFFEL



8065 IRON TOWER COURT, COLORADO SPRINGS, CO 80939



CONTACT BROKER FOR PRICING

- ZONED M1 FOR A VARIETY OF INDUSTRIAL USES
- ANTICIPATED COMPLETION DATE 3RD QTR 2023
- 9,750 SQ FT
- 1.07 ACRES
- 1,500 SQ FT FINISHED OFFICE SPACE
- EASY ACCESS TO POWERS & HWY 24
- 3- 14' OVERHEAD DOORS



LESTER COLODNY
Broker
(719)271-5546



COLE UNDERWOOD
Broker Associate
(719)200-4610
cole@coleunderwood.com