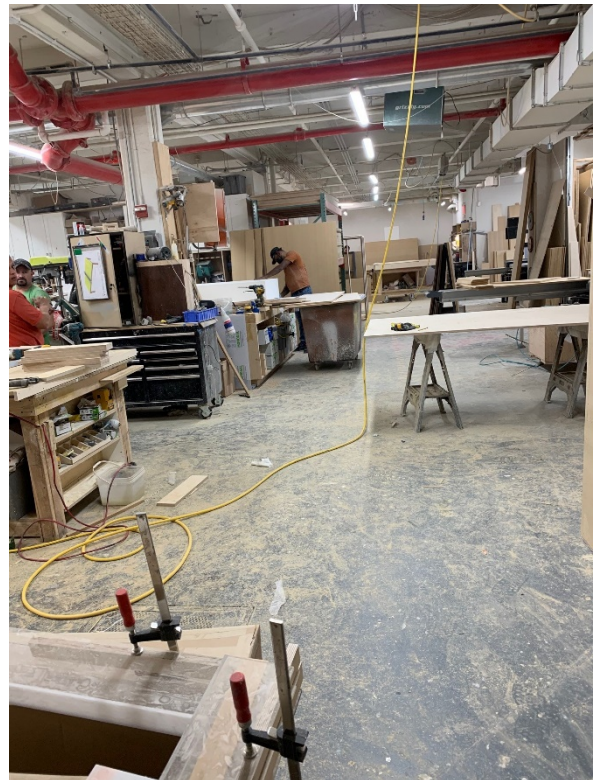


47-07 32nd Place
Long Island City, New York

*11,000 Sq. Ft. & 3,500 Sq. Ft. – Modern Ground Floor
For Sublease*



Features:

- ❖ Ideal for manufacturing or warehouse
- ❖ Air-conditioned
- ❖ 1,500 sq. ft. modern offices
- ❖ Renovated in 1987
- ❖ Fireproof construction
- ❖ 13' ceilings
- ❖ Zone M1-4
- ❖ Two 53' interior loading docks
- ❖ Wet sprinkler
- ❖ Heat included
- ❖ Block 252 lot 18
- ❖ Near #7 subway
- ❖ Close to LIE & 59th Street Bridge
- ❖ Available immediately
- ❖ Asking \$30.00 per sq. ft.

For Further Information, Call Exclusive Agent:

Joseph B. Eliasoph - Salesperson

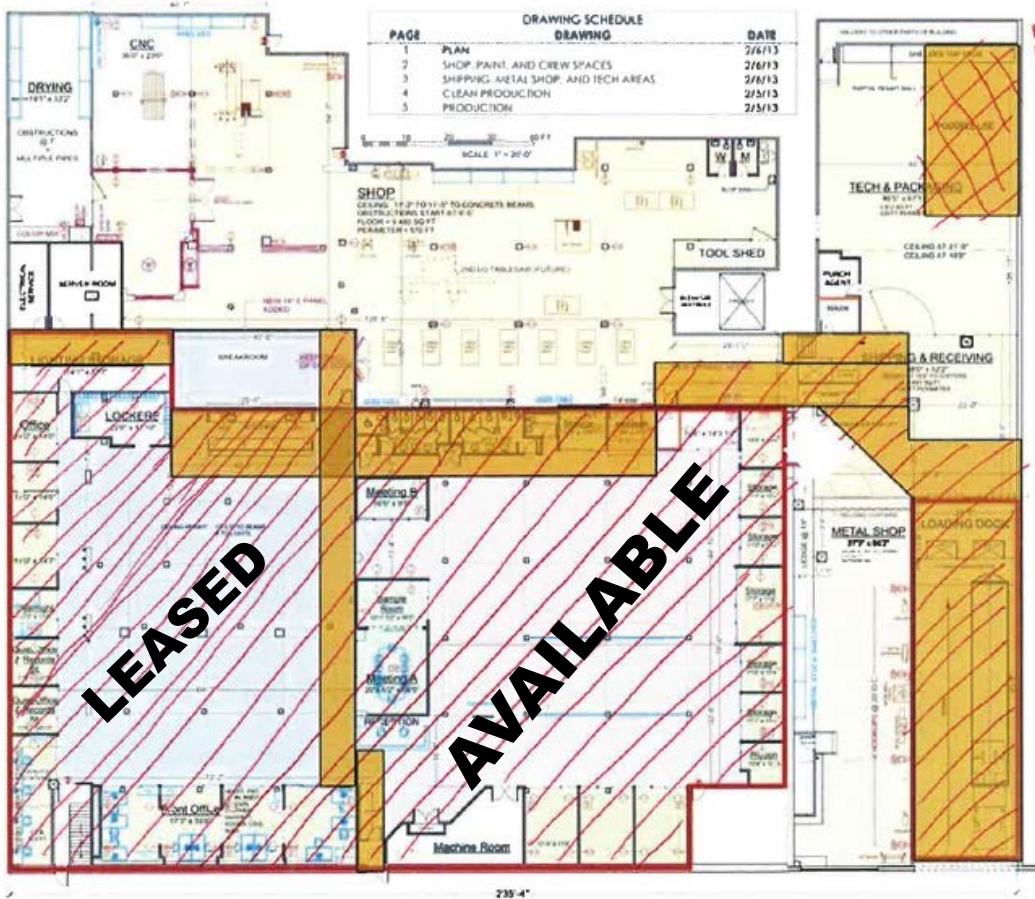
718-512-0292

jeliasoph@s-z.com

 **Sholom &
Zuckerbrot** Realty LLC
Established 1962

47-07 32nd Place
 Long Island City, New York

Site Plan



REVISION:
 FEB 26, 2013
 EXTENSIVE SPRAY, SHOP,
 AND ELECTRICAL PLAN
 REVISIONS.

GHS
 GEORGE HOWELL DESIGN
 150 W 22ND ST
 NEW YORK, NY 10011

LONG ISLAND CITY FACILITY
 47-07 32ND PLACE, QUEENS,
 NY 11101

- DEMO
- PROPOSED BUILD
- PROPOSED FURN
- CONCRETE BLOCK
- GYPSSUM
- SUPPORT SPACES

Project:
 LONG ISLAND CITY
 FACILITY ADJUSTMENTS

Date: 2/28/13
 Drawn by: CU

Title: 4/20/13
 Scale: AS NOTED

Drawing title:
 PLAN

Drawing #:
 1

Total Sheets: 3

For Further Information, Call Exclusive Agent:
Joseph B. Eliasoph - Salesperson

718-512-0292
 jeliasoph@s-z.com

Sholom & Zuckerbrot Realty LLC
 Established 1962