

An aerial photograph of a large, multi-story brick building with a central entrance canopy. The building is surrounded by a parking lot filled with cars and several trees with vibrant autumn foliage in shades of yellow, orange, and red. The background shows a dense forest of green trees under a clear blue sky.

St. Mary's Hospital MOB West

5899 Bremo Road, Richmond, VA

Well-appointed class A medical office building on the campus of Bon Secours St. Mary's Hospital

St. Mary's Hospital MOB West

Convenient access from all points in Richmond's near West End

St. Mary's Hospital MOB West is a well-appointed class A medical office building located on the Bon Secours St. Mary's Hospital campus. The campus includes four medical office buildings and St. Mary's Hospital, an award winning hospital that has been serving Central Virginia since 1966.

The building is conveniently located near Libbie Avenue, Patterson Avenue, and West Broad Street. With 4,620 SF available on the first floor, this property is an opportunity for medical office users to establish a presence on a thriving medical campus.



5899 BREMO ROAD,
RICHMOND, VA



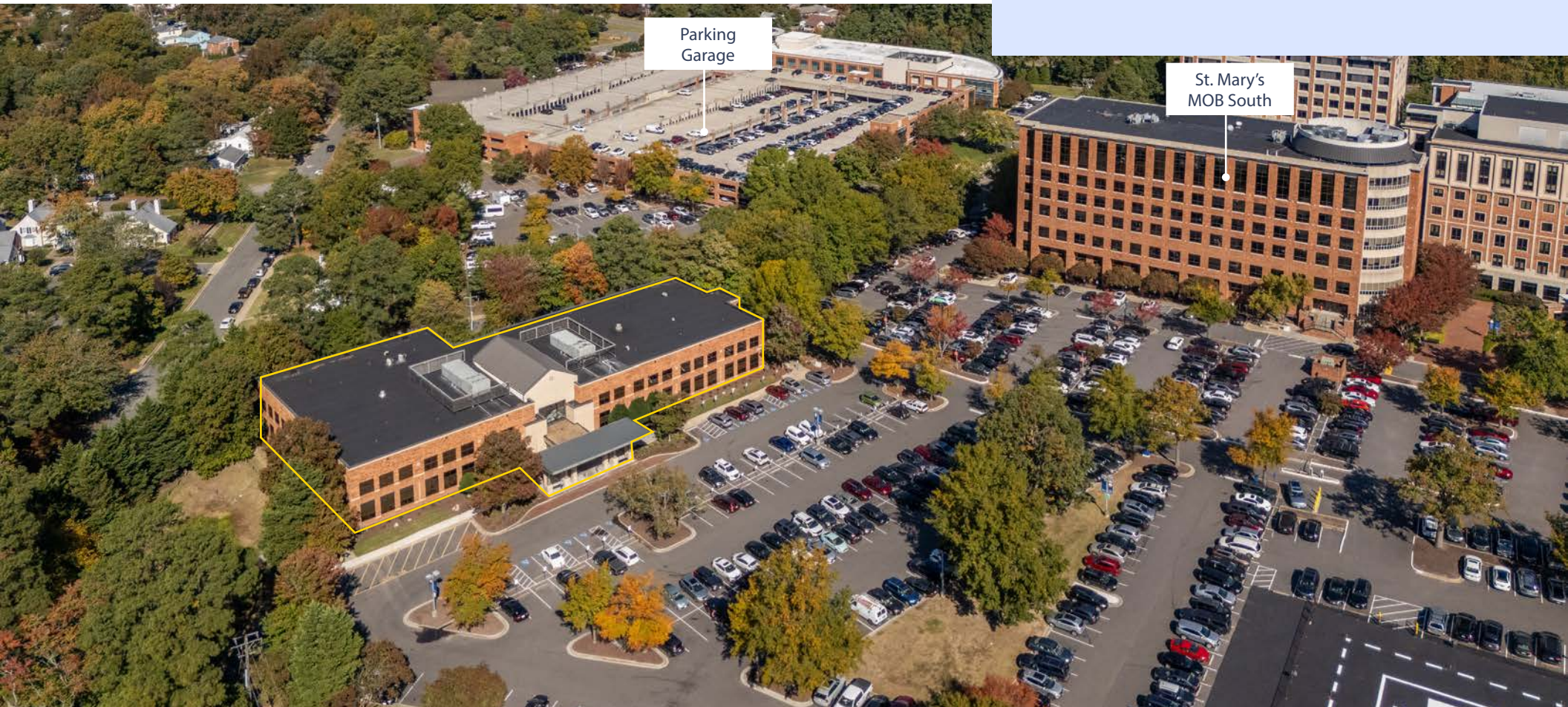
41,882 SF,
2 STORY BUILDING



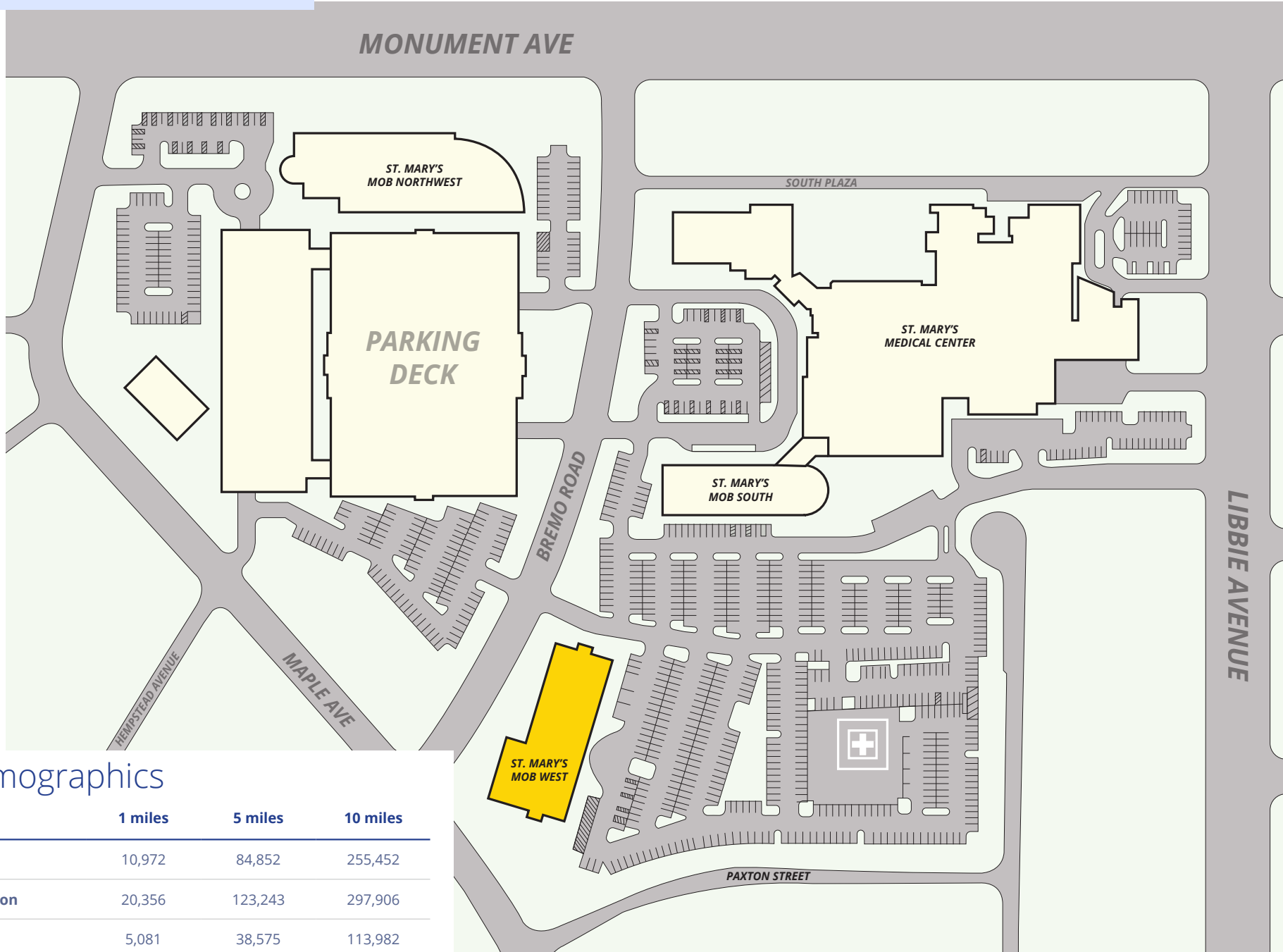
ON SITE DEDICATED
PARKING LOT



LOCATED ON BON SECOURS
ST. MARY'S HOSPITAL CAMPUS



St. Mary's Hospital MOB West

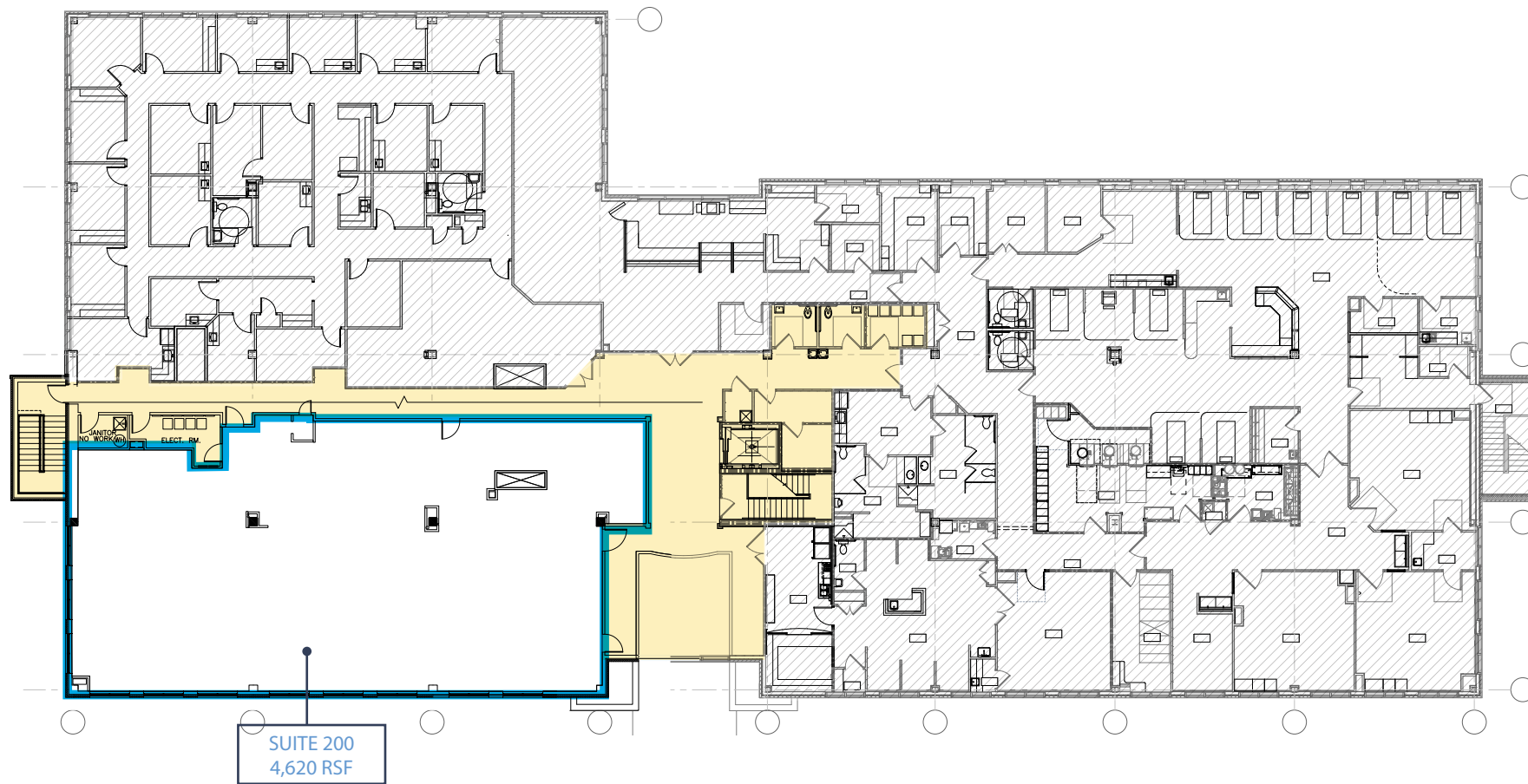


2024 Demographics

	1 miles	5 miles	10 miles
Population	10,972	84,852	255,452
Daytime Population	20,356	123,243	297,906
Households	5,081	38,575	113,982
Average Household Income	\$163,726	\$137,549	\$115,364

SECOND FLOOR

Suite 200: 4,620 SF



Medical Spaces Available

Suite 200

4,620 SF

St. Mary's Hospital MOB West

SECOND FLOOR

Suite 200: 4,620 SF



St. Mary's Hospital MOB West



St. Mary's
Medical Center

St. Mary's
MOB South

St. Mary's
MOB West

Parking Deck

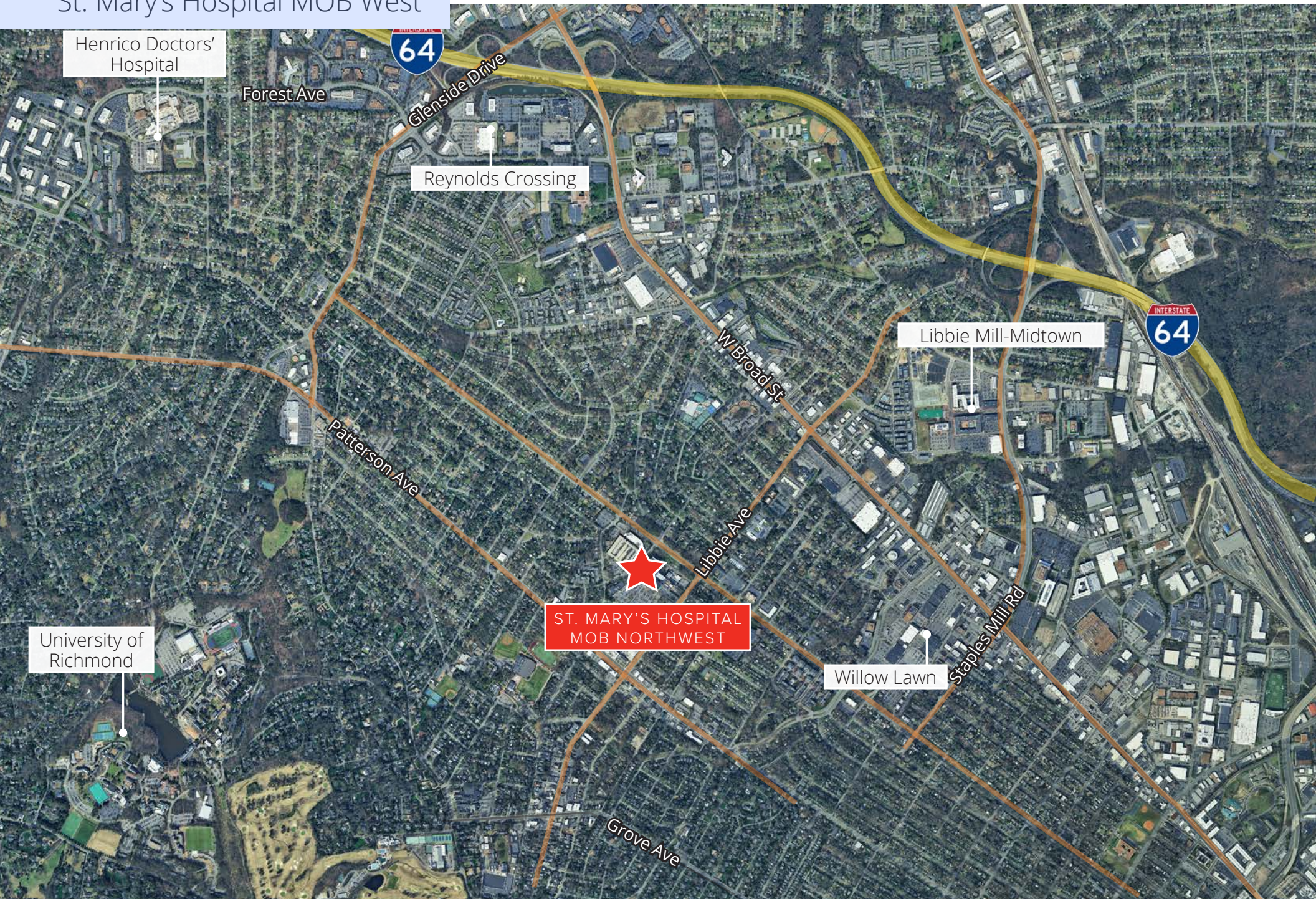
St. Mary's
MOB NW

Bremo Road

Monument Ave

Maple Ave

St. Mary's Hospital MOB West



Henrico Doctors' Hospital

Forest Ave

64

Glenside Drive

Reynolds Crossing

Libbie Mill-Midtown

INTERSTATE 64

W Broad St

Patterson Ave



ST. MARY'S HOSPITAL MOB NORTHWEST

Libbie Ave

Willow Lawn

Stables Mill Rd

University of Richmond

Grove Ave



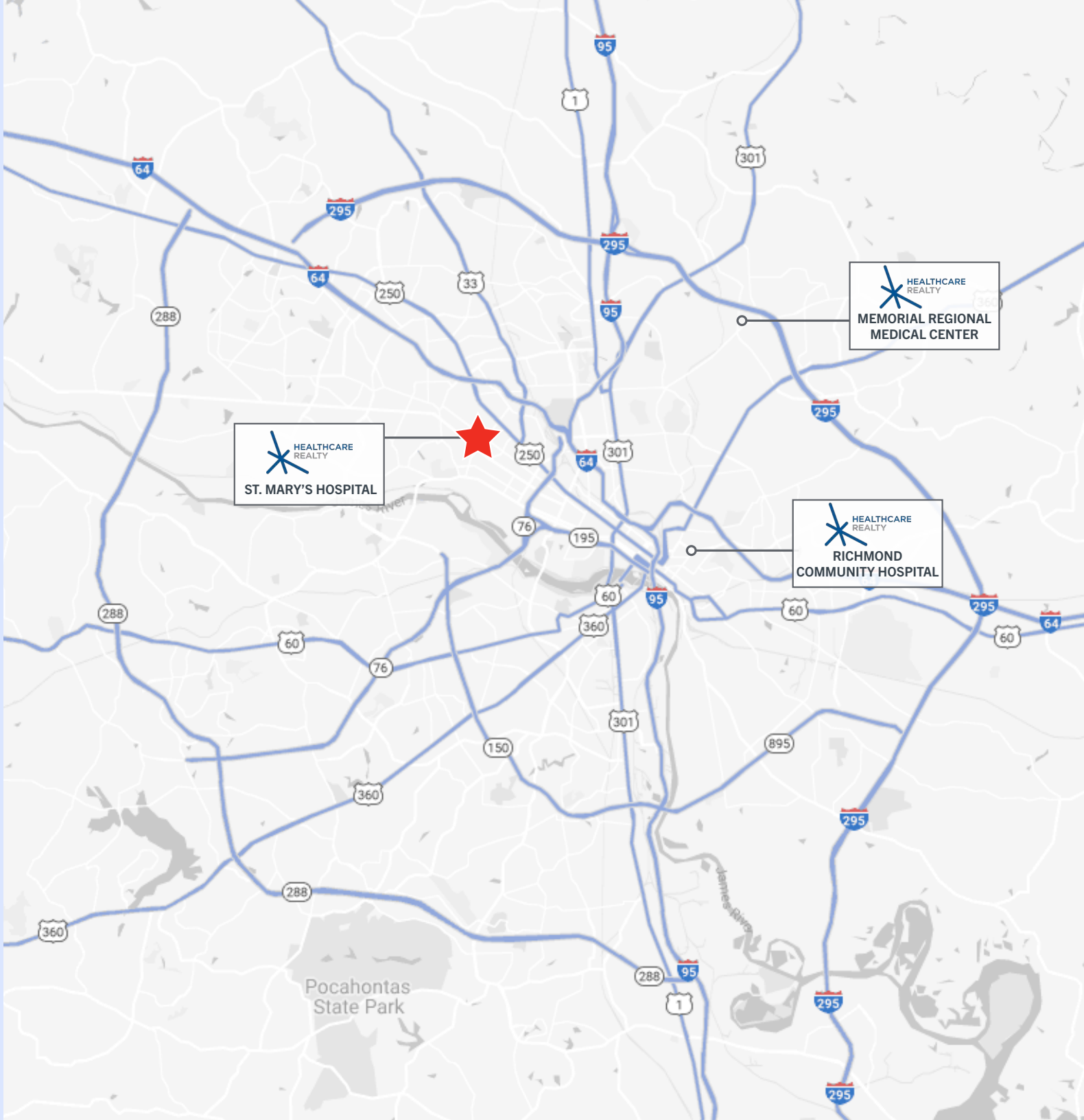
CONTACT US

John Carpin
Senior Vice President
+1 804 267 7216
john.carpin@colliers.com

Malcolm Randolph, SIOR
Senior Vice President
+1 804 267 7208
malcolm.randolph@colliers.com

Catherine Walker
Senior Associate
+1 804 968 1978
catherine.walker@colliers.com

Colliers
2221 Edward Holland Dr
Suite 600 | Richmond, VA
P: +1 804 320 5500



HEALTHCARE REALTY
ST. MARY'S HOSPITAL

HEALTHCARE REALTY
MEMORIAL REGIONAL MEDICAL CENTER

HEALTHCARE REALTY
RICHMOND COMMUNITY HOSPITAL